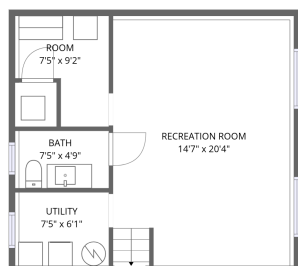
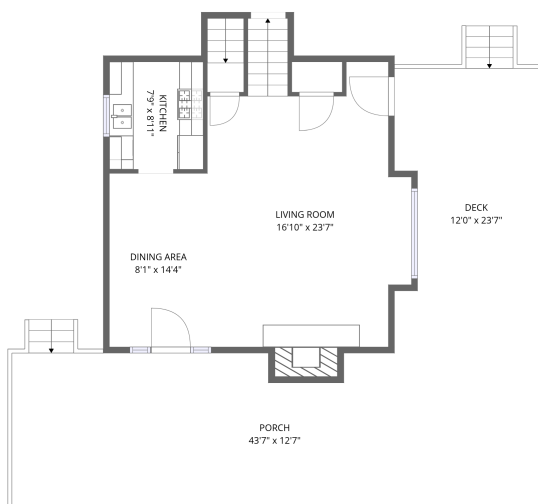


Home data report

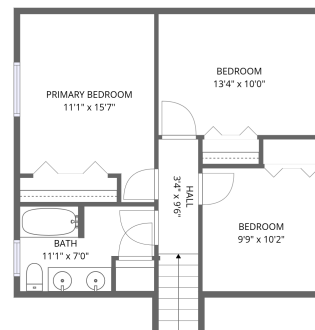
10200 E Palmer-Wasilla Hwy,& 10250 E Palmer-Wasilla Hwy,Palmer,AK,US, & 10250 E Palmer-Wasilla



Basement



1st floor



2nd floor

Total Area: 1634 sq. ft

Basement: 465 sq. ft, 1st Floor: 588 sq. ft, 2nd Floor: 581 sq. ft

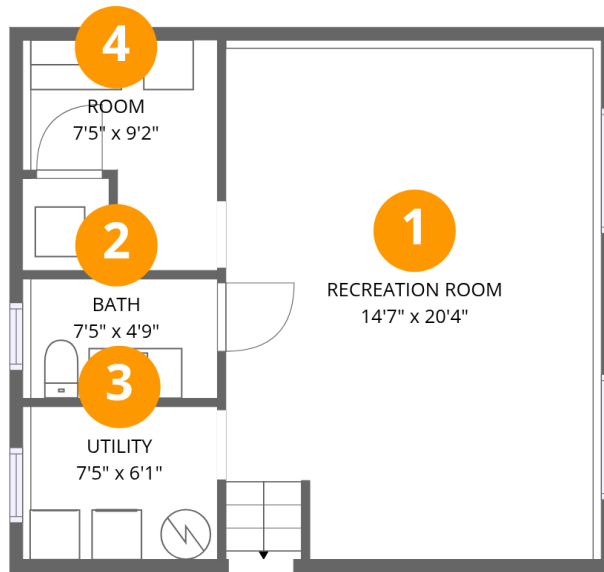
Excluded: Undefined 13 sq. ft, Porch 534 sq. ft, Deck 263 sq. ft, Fireplace 15 sq. ft, Walls: 146 sq. ft

Property summary





10200 E Palmer-Wasilla Hwy,& 10250 E Palmer-Wasilla Hwy,Palmer,AK,US, & 10250 E Palmer-Wasilla



Room dimensions

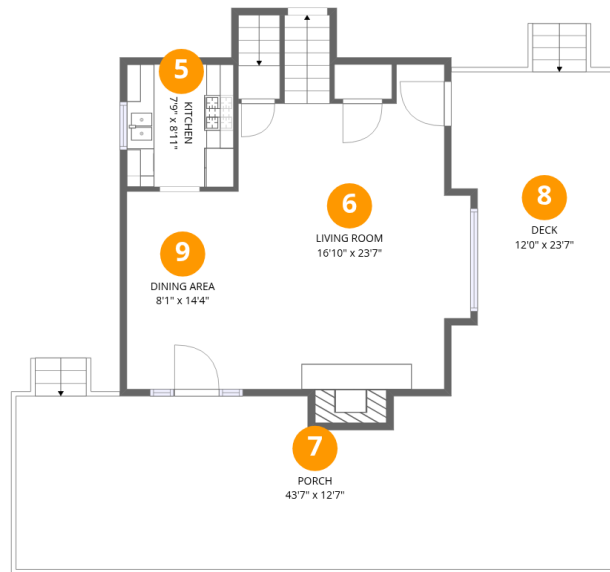
Floor 1 Below grade

Total:465sqft Excluded: 13sqft

#		Dimensions	sqft	Counted as living area
1	Recreation Room	14'7" x 20'4"	309 sq. ft	Yes
2	Bath	7'5" x 4'9"	37 sq. ft	Yes
3	Utility	7'5" x 6'1"	47 sq. ft	Yes
4	Room	7'5" x 9'2"	56 sq. ft	Yes



10200 E Palmer-Wasilla Hwy,& 10250 E Palmer-Wasilla Hwy,Palmer,AK,US, & 10250 E Palmer-Wasilla



Room dimensions

Floor 2

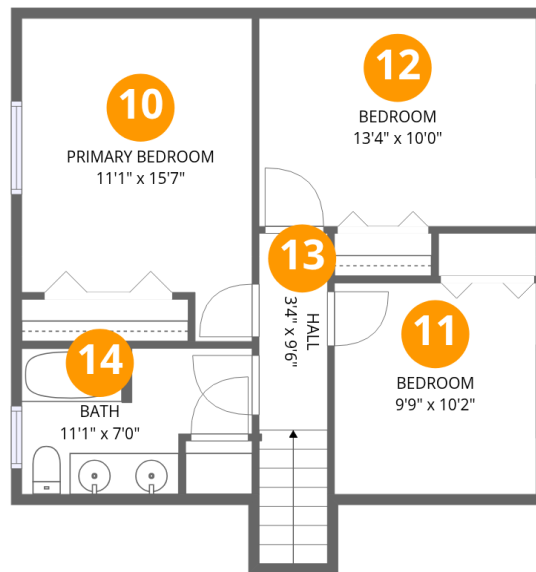
Total:588sqft

Excluded: 812sqft

#		Dimensions	sqft	Counted as living area
5	Kitchen	7'9" x 8'11"	69 sq. ft	Yes
6	Living Room	16'10" x 23'7"	372 sq. ft	Yes
7	Porch	43'7" x 12'7"	534 sq. ft	No
8	Deck	12'0" x 23'7"	263 sq. ft	No
9	Dining Area	8'1" x 14'4"	116 sq. ft	Yes



10200 E Palmer-Wasilla Hwy,& 10250 E Palmer-Wasilla Hwy,Palmer,AK,US, & 10250 E Palmer-Wasilla



Room dimensions

Floor 3

Total:581sqft

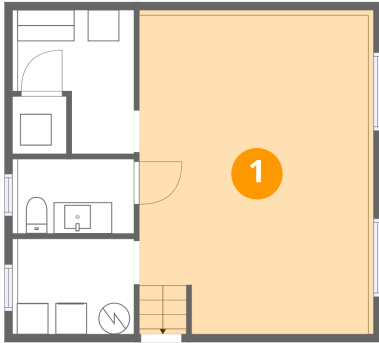
Excluded: 0sqft

#		Dimensions	sqft	Counted as living area
10	Primary Bedroom	11'1" x 15'7"	153 sq. ft	Yes
11	Bedroom	9'9" x 10'2"	99 sq. ft	Yes
12	Bedroom	13'4" x 10'0"	134 sq. ft	Yes
13	Hall	3'4" x 9'6"	53 sq. ft	Yes
14	Bath	11'1" x 7'0"	67 sq. ft	Yes



10200 E Palmer-Wasilla Hwy,& 10250 E Palmer-Wasilla Hwy,Palmer,AK,US, & 10250 E Palmer-Wasilla

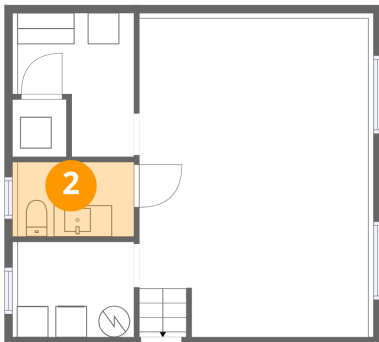
1 Floor 1 - Recreation Room



Dimensions: 14'7" x 20'4"
Area: 309 sq. ft
Counted as living area: Yes

Heated: Yes
Finished: Yes
Enclosed: Yes
Contiguous: Yes
Permitted: Yes
Wet space: No
Addition: No
Conversion: No

2 Floor 1 - Bath



Dimensions: 7'5" x 4'9"
Area: 37 sq. ft
Counted as living area: Yes

Heated: Yes
Finished: Yes
Enclosed: Yes
Contiguous: Yes
Permitted: Yes
Wet space: Yes
Addition: No
Conversion: No



10200 E Palmer-Wasilla Hwy,& 10250 E Palmer-Wasilla Hwy,Palmer,AK,US, & 10250 E Palmer-Wasilla

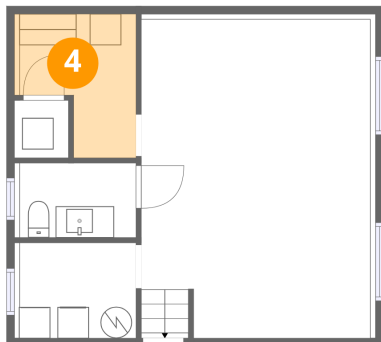
3 Floor 1 - Utility



Dimensions: 7'5" x 6'1"
Area: 47 sq. ft
Counted as living area: Yes

Heated: Yes
Finished: Yes
Enclosed: Yes
Contiguous: Yes
Permitted: Yes
Wet space: No
Addition: No
Conversion: No

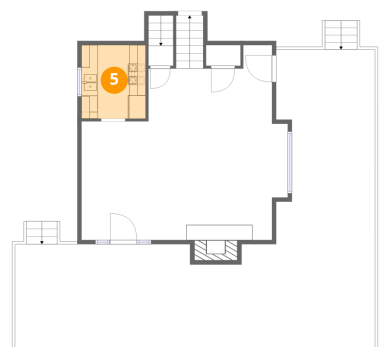
4 Floor 1 - Room



Dimensions: 7'5" x 9'2"
Area: 56 sq. ft
Counted as living area: Yes

Heated: Yes
Finished: Yes
Enclosed: Yes
Contiguous: Yes
Permitted: Yes
Wet space: No
Addition: No
Conversion: No

5 Floor 2 - Kitchen



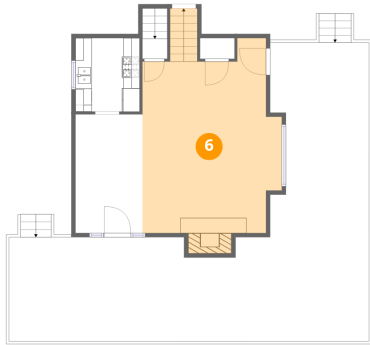
Dimensions: 7'9" x 8'11"
Area: 69 sq. ft
Counted as living area: Yes

Heated: Yes
Finished: Yes
Enclosed: Yes
Contiguous: Yes
Permitted: Yes
Wet space: No
Addition: No
Conversion: No



10200 E Palmer-Wasilla Hwy,& 10250 E Palmer-Wasilla Hwy,Palmer,AK,US, & 10250 E Palmer-Wasilla

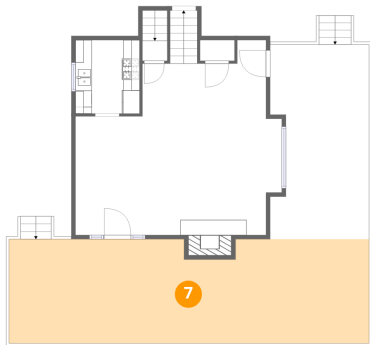
6 Floor 2 - Living Room



Dimensions: 16'10" x 23'7"
Area: 372 sq. ft
Counted as living area: Yes

Heated: Yes
Finished: Yes
Enclosed: Yes
Contiguous: Yes
Permitted: Yes
Wet space: No
Addition: No
Conversion: No

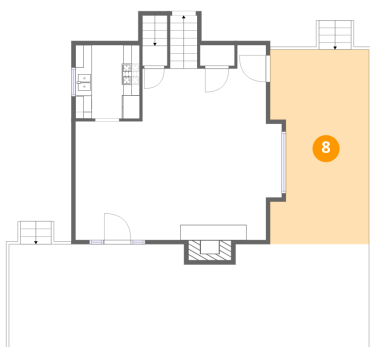
7 Floor 2 - Porch



Dimensions: 43'7" x 12'7"
Area: 534 sq. ft
Counted as living area: No

Heated: No
Finished: No
Enclosed: No
Contiguous: Yes
Permitted: Yes
Wet space: No
Addition: No
Conversion: No

8 Floor 2 - Deck



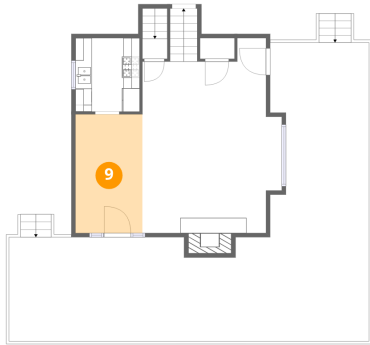
Dimensions: 12'0" x 23'7"
Area: 263 sq. ft
Counted as living area: No

Heated: No
Finished: No
Enclosed: No
Contiguous: Yes
Permitted: Yes
Wet space: No
Addition: No
Conversion: No



10200 E Palmer-Wasilla Hwy,& 10250 E Palmer-Wasilla Hwy,Palmer,AK,US, & 10250 E Palmer-Wasilla

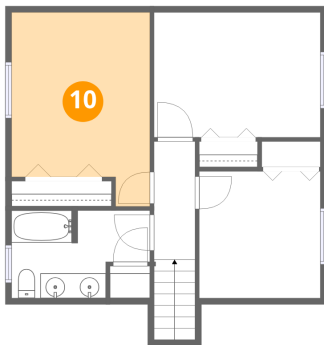
9 Floor 2 - Dining Area



Dimensions: 8'1" x 14'4"
Area: 116 sq. ft
Counted as living area: Yes

Heated: Yes
Finished: Yes
Enclosed: Yes
Contiguous: Yes
Permitted: Yes
Wet space: No
Addition: No
Conversion: No

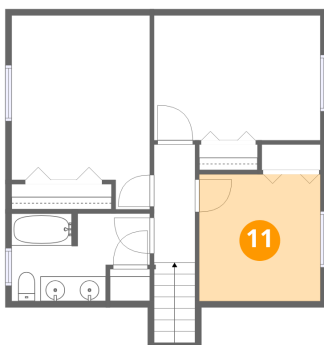
10 Floor 3 - Primary Bedroom



Dimensions: 11'1" x 15'7"
Area: 153 sq. ft
Counted as living area: Yes

Heated: Yes
Finished: Yes
Enclosed: Yes
Contiguous: Yes
Permitted: Yes
Wet space: No
Addition: No
Conversion: No

11 Floor 3 - Bedroom



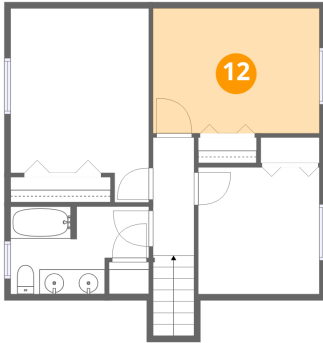
Dimensions: 9'9" x 10'2"
Area: 99 sq. ft
Counted as living area: Yes

Heated: Yes
Finished: Yes
Enclosed: Yes
Contiguous: Yes
Permitted: Yes
Wet space: No
Addition: No
Conversion: No



10200 E Palmer-Wasilla Hwy,& 10250 E Palmer-Wasilla Hwy,Palmer,AK,US, & 10250 E Palmer-Wasilla

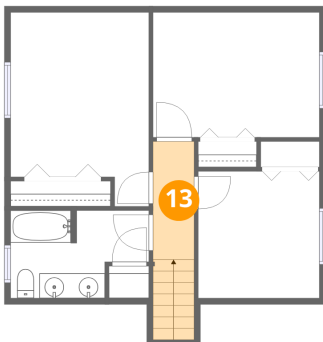
12 Floor 3 - Bedroom



Dimensions: 13'4" x 10'0"
Area: 134 sq. ft
Counted as living area: Yes

Heated: Yes
Finished: Yes
Enclosed: Yes
Contiguous: Yes
Permitted: Yes
Wet space: No
Addition: No
Conversion: No

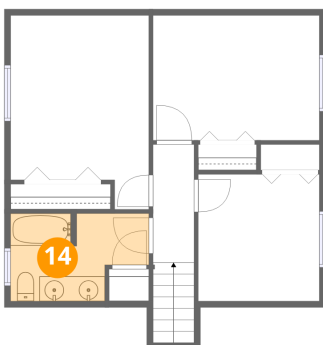
13 Floor 3 - Hall



Dimensions: 3'4" x 9'6"
Area: 53 sq. ft
Counted as living area: Yes

Heated: Yes
Finished: Yes
Enclosed: Yes
Contiguous: Yes
Permitted: Yes
Wet space: No
Addition: No
Conversion: No

14 Floor 3 - Bath



Dimensions: 11'1" x 7'0"
Area: 67 sq. ft
Counted as living area: Yes

Heated: Yes
Finished: Yes
Enclosed: Yes
Contiguous: Yes
Permitted: Yes
Wet space: Yes
Addition: No
Conversion: No