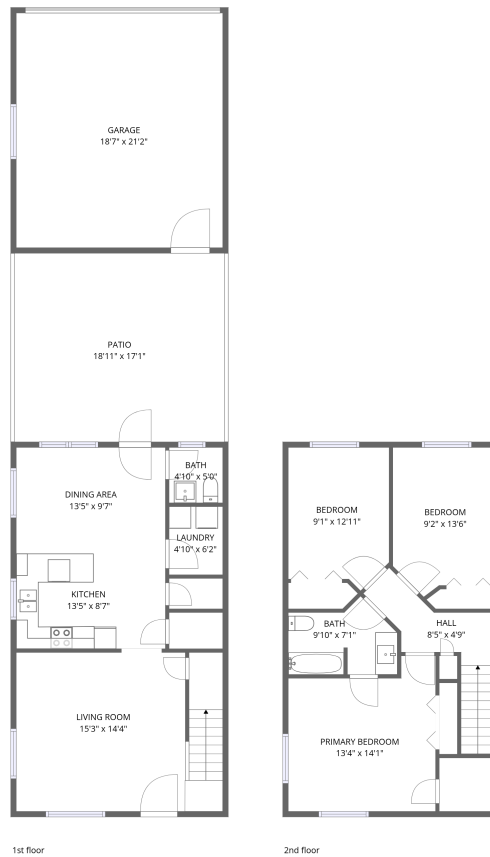


Home data report

1897 Hampton Way, Twin Falls, ID, US



Total Area: 1228 sq. ft


1st Floor: 614 sq. ft, 2nd Floor: 614 sq. ft

Excluded: Garage 396 sq. ft, Patio 324 sq. ft, Walls: 139 sq. ft

Property summary

 **2** Floors

 **3** Bedrooms

 **1** Bathrooms

Home data report

1897 Hampton Way, Twin Falls, ID, US

 **1**
Half baths

 **1**
Garages

Home data report

1897 Hampton Way, Twin Falls, ID, US



Room dimensions

Floor 1

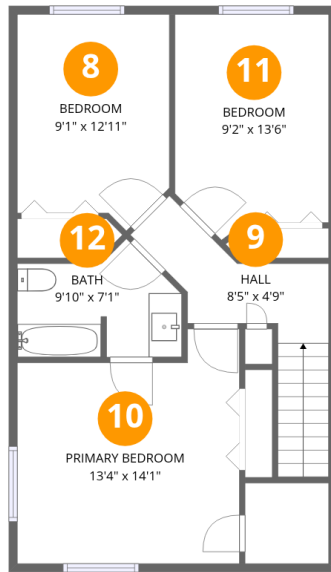
Total:614sqft

Excluded: 720sqft

#		Dimensions	sqft	Counted as living area
1	Kitchen	13'5" x 8'7"	115 sq. ft	Yes
2	Living Room	15'3" x 14'4"	219 sq. ft	Yes
3	Laundry	4'10" x 6'2"	30 sq. ft	Yes
4	Garage	18'7" x 21'2"	394 sq. ft	No
5	Patio	18'11" x 17'1"	323 sq. ft	No
6	Bath	4'10" x 5'0"	24 sq. ft	Yes
7	Dining Area	13'5" x 9'7"	129 sq. ft	Yes

Home data report

1897 Hampton Way, Twin Falls, ID, US



Room dimensions

Floor 2

Total: 614 sqft Excluded: 0 sqft

#		Dimensions	sqft	Counted as living area
8	Bedroom	9'1" x 12'11"	117 sq. ft	Yes
9	Hall	8'5" x 4'9"	40 sq. ft	Yes
10	Primary Bedroom	13'4" x 14'1"	187 sq. ft	Yes
11	Bedroom	9'2" x 13'6"	124 sq. ft	Yes
12	Bath	9'10" x 7'1"	70 sq. ft	Yes

1 Floor 1 - Kitchen



Dimensions: 13'5" x 8'7"
Area: 115 sq. ft
Counted as living area: Yes

Heated: Yes
Finished: Yes
Enclosed: Yes
Contiguous: Yes
Permitted: Yes
Wet space: No
Addition: No
Conversion: No

2 Floor 1 - Living Room



Dimensions: 15'3" x 14'4"
Area: 219 sq. ft
Counted as living area: Yes

Heated: Yes
Finished: Yes
Enclosed: Yes
Contiguous: Yes
Permitted: Yes
Wet space: No
Addition: No
Conversion: No

3 Floor 1 - Laundry



Dimensions: 4'10" x 6'2"
Area: 30 sq. ft
Counted as living area: Yes

Heated: Yes
Finished: Yes
Enclosed: Yes
Contiguous: Yes
Permitted: Yes
Wet space: No
Addition: No
Conversion: No

4 Floor 1 - Garage



Dimensions: 18'7" x 21'2"
Area: 394 sq. ft
Counted as living area: No

Heated: No
Finished: No
Enclosed: Yes
Contiguous: Yes
Permitted: Yes
Wet space: No
Addition: No
Conversion: No

5 Floor 1 - Patio



Dimensions: 18'11" x 17'1"
Area: 323 sq. ft
Counted as living area: No

Heated: No
Finished: No
Enclosed: No
Contiguous: Yes
Permitted: Yes
Wet space: No
Addition: No
Conversion: No

6 Floor 1 - Bath



Dimensions: 4'10" x 5'0"
Area: 24 sq. ft
Counted as living area: Yes

Heated: Yes
Finished: Yes
Enclosed: Yes
Contiguous: Yes
Permitted: Yes
Wet space: Yes
Addition: No
Conversion: No

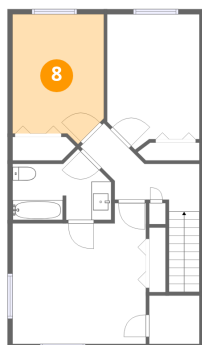
7 Floor 1 - Dining Area



Dimensions: 13'5" x 9'7"
Area: 129 sq. ft
Counted as living area: Yes

Heated: Yes
Finished: Yes
Enclosed: Yes
Contiguous: Yes
Permitted: Yes
Wet space: No
Addition: No
Conversion: No

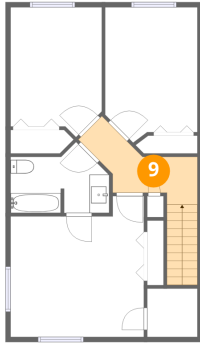
8 Floor 2 - Bedroom



Dimensions: 9'1" x 12'11"
Area: 117 sq. ft
Counted as living area: Yes

Heated: Yes
Finished: Yes
Enclosed: Yes
Contiguous: Yes
Permitted: Yes
Wet space: No
Addition: No
Conversion: No

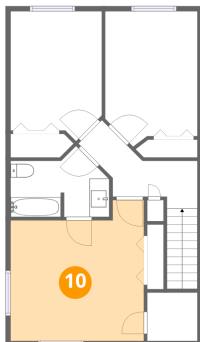
9 Floor 2 - Hall



Dimensions: 8'5" x 4'9"
Area: 40 sq. ft
Counted as living area: Yes

Heated: Yes
Finished: Yes
Enclosed: Yes
Contiguous: Yes
Permitted: Yes
Wet space: No
Addition: No
Conversion: No

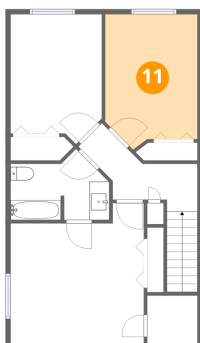
10 Floor 2 - Primary Bedroom



Dimensions: 13'4" x 14'1"
Area: 187 sq. ft
Counted as living area: Yes

Heated: Yes
Finished: Yes
Enclosed: Yes
Contiguous: Yes
Permitted: Yes
Wet space: No
Addition: No
Conversion: No

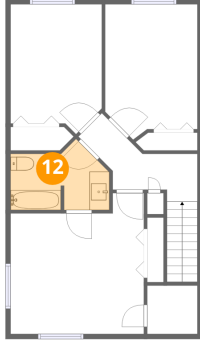
11 Floor 2 - Bedroom



Dimensions: 9'2" x 13'6"
Area: 124 sq. ft
Counted as living area: Yes

Heated: Yes
Finished: Yes
Enclosed: Yes
Contiguous: Yes
Permitted: Yes
Wet space: No
Addition: No
Conversion: No

12 Floor 2 - Bath



Dimensions: 9'10" x 7'1"
Area: 70 sq. ft
Counted as living area: Yes

Heated: Yes
Finished: Yes
Enclosed: Yes
Contiguous: Yes
Permitted: Yes
Wet space: Yes
Addition: No
Conversion: No