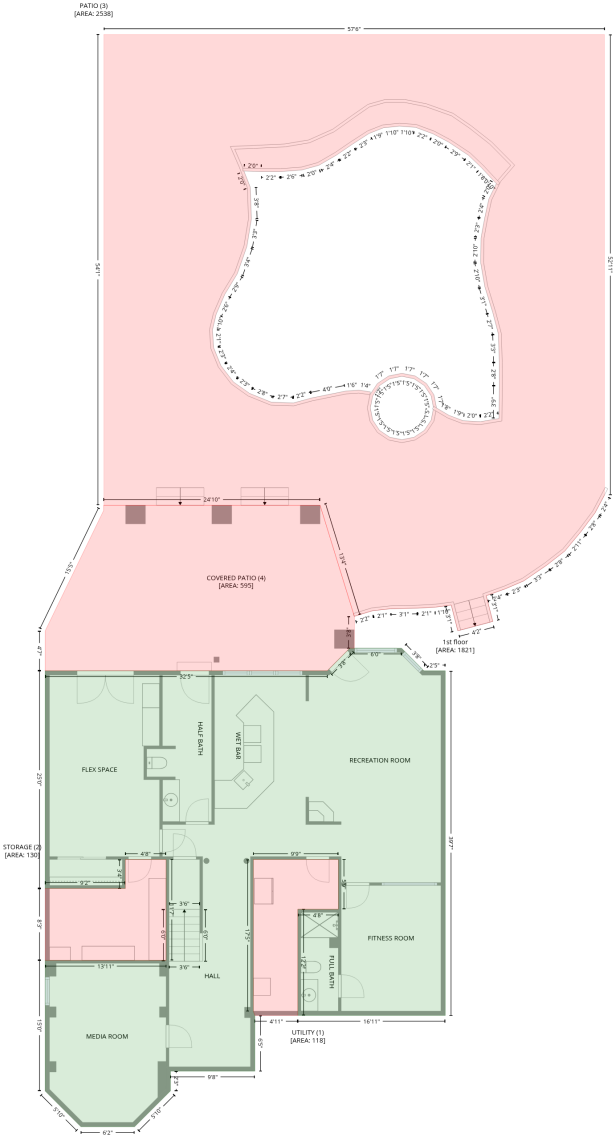


# 151 Eagle Chase Ln, Troutman, NC, US

Gross Living Area: 5120 sq. ft

## Level 1



# 151 Eagle Chase Ln, Troutman, NC, US

Gross Living Area: 5120 sq. ft

## Level 1

Space	Area (sq. ft)	Calculation <small>Coordinate Polygon Area Algorithm using inches</small>
1st floor (Living area)	1821	$-(570.6 + 601.3) * (783 - 814.1) + (601.3 + 630.7) * (814.1 - 814.1) + (630.7 + 630.7) * (814.1 - 1289.4) + (630.7 + 427.7) * (1289.4 - 1289.4) + (427.7 + 427.7) * (1289.4 - 1142.9) + (427.7 + 483.4) * (1142.9 - 1142.9) + (483.4 + 483.4) * (1142.9 - 1074.3) + (483.4 + 366.5) * (1074.3 - 1074.3) + (366.5 + 366.5) * (1074.3 - 1283.4) + (366.5 + 368.5) * (1283.4 - 1289.4) + (368.5 + 368.5) * (1289.4 - 1366.1) + (368.5 + 252.4) * (1366.1 - 1366.1) + (252.4 + 252.4) * (1366.1 - 1393.4) + (252.4 + 203) * (1393.4 - 1442.8) + (203 + 129.1) * (1442.8 - 1442.8) + (129.1 + 79.8) * (1442.8 - 1393.5) + (79.8 + 79.8) * (1393.5 - 1213.4) + (79.8 + 246.4) * (1213.4 - 1213.4) + (246.4 + 246.4) * (1213.4 - 1074.3) + (246.4 + 190.2) * (1074.3 - 1074.3) + (190.2 + 190.2) * (1074.3 - 1114.3) + (190.2 + 79.8) * (1114.3 - 1114.3) + (79.8 + 79.8) * (1114.3 - 814.1) + (79.8 + 468.4) * (814.1 - 814.1) + (468.4 + 499.1) * (814.1 - 783) + (499.1 + 570.6) * (783 - 783) * 0.5 * 0.00694$
UTILITY (Non-living area)	118	$-(483.4 + 483.4) * (1074.3 - 1142.9) + (483.4 + 427.7) * (1142.9 - 1142.9) + (427.7 + 427.7) * (1142.9 - 1289.4) + (427.7 + 368.5) * (1289.4 - 1289.4) + (368.5 + 366.5) * (1289.4 - 1283.4) + (366.5 + 366.5) * (1283.4 - 1074.3) + (366.5 + 483.4) * (1074.3 - 1074.3) * 0.5 * 0.00694$
STORAGE (Non-living area)	130	$-(246.4 + 246.4) * (1074.3 - 1213.4) + (246.4 + 79.8) * (1213.4 - 1213.4) + (79.8 + 79.8) * (1213.4 - 1114.3) + (79.8 + 190.2) * (1114.3 - 1114.3) + (190.2 + 190.2) * (1114.3 - 1074.3) + (190.2 + 246.4) * (1074.3 - 1074.3) * 0.5 * 0.00694$
PATIO (Non-living area)	2538	$-(850.1 + 850.1) * (-63.5 - 571.4) + (850.1 + 837) * (571.4 - 596.1) + (837 + 817.8) * (596.1 - 621.8) + (817.8 + 795.2) * (621.8 - 648.9) + (795.2 + 770.4) * (648.9 - 668.4) + (770.4 + 738.5) * (668.4 - 690.2) + (738.5 + 713.3) * (690.2 - 701) + (713.3 + 687.1) * (701 - 710.5) + (687.1 + 696.1) * (710.5 - 746) + (696.1 + 648) * (746 - 758.9) + (648 + 638.9) * (758.9 - 723.4) + (638.9 + 617) * (723.4 - 726.3) + (617 + 592.2) * (726.3 - 727.7) + (592.2 + 555.6) * (727.7 - 728.4) + (555.6 + 530.3) * (728.4 - 731.3) + (530.3 + 505.5) * (731.3 - 738.9) + (505.5 + 458.3) * (738.9 - 585.7) + (458.3 + 160.4) * (585.7 - 585.7) + (160.4 + 160.4) * (585.7 - -63.5) + (160.4 + 850.1) * (-63.5 - -63.5) * 0.5 * 0.00694 + -(571 + 554.3) * (407.9 - 411.3) + (554.3 + 540.2) * (411.3 - 420.7) + (540.2 + 530.8) * (420.7 - 434.9) + (530.8 + 527.5) * (434.9 - 451.6) + (527.5 + 530.8) * (451.6 - 468.3) + (530.8 + 540.2) * (468.3 - 482.5) + (540.2 + 554.3) * (482.5 - 492) + (554.3 + 571) * (492 - 495.3) + (571 + 587.7) * (495.3 - 492) + (587.7 + 601.9) * (492 - 482.5) + (601.9 + 611.3) * (482.5 - 468.3) + (611.3 + 614.6) * (468.3 - 451.6) + (614.6 + 611.3) * (451.6 - 434.9) + (611.3 + 601.9) * (434.9 - 420.7) + (601.9 + 587.7) * (420.7 - 411.3) + (587.7 + 571) * (411.3 - 407.9) * 0.5 * 0.00694 + -(567.6 + 545.5) * (63 - 65.3) + (545.5 + 525.8) * (65.3 - 73) + (525.8 + 502.7) * (73 - 88) + (502.7 + 480.9) * (88 - 102.9) + (480.9 + 456.6) * (102.9 - 117) + (456.6 + 433.4) * (117 - 123.4) + (433.4 + 403.7) * (123.4 - 125.7) + (403.7 + 377.7) * (125.7 - 125.7) + (377.7 + 353.5) * (125.7 - 124.8) + (353.5 + 362.2) * (124.8 - 147.1) + (362.2 + 363.8) * (147.1 - 191) + (363.8 + 357.5) * (191 - 229.1) + (357.5 + 344.4) * (229.1 - 266.5) + (344.4 + 327.1) * (266.5 - 295) + (327.1 + 315.3) * (295 - 322.4) + (315.3 + 310.2) * (322.4 - 343.9) + (310.2 + 311.8) * (343.9 - 368.6) + (311.8 + 321.8) * (368.6 - 393.3) + (321.8 + 339.1) * (393.3 - 415.8) + (339.1 + 361.3) * (415.8 - 431.6) + (361.3 + 391.2) * (431.6 - 443.7) + (391.2 + 421.7) * (443.7 - 444.7) + (421.7 + 446.9) * (444.7 - 437.8) + (446.9 + 493.5) * (437.8 - 428.3) + (493.5 + 511.8) * (428.3 - 427.1) + (511.8 + 527.6) * (427.1 - 429.4) + (527.6 + 527) * (429.4 - 433.4) + (527 + 537.3) * (433.4 - 417.9) + (537.3 + 552.8) * (417.9 - 407.5) + (552.8 + 571) * (407.5 - 403.9) + (571 + 589.3) * (403.9 - 407.5) + (589.3 + 604.8) * (407.5 - 417.9) + (604.8 + 615.1) * (417.9 - 433.4) + (615.1 + 618.6) * (433.4 - 451.6) + (618.6 + 635.9) * (451.6 - 461.9) + (635.9 + 655.4) * (461.9 - 469.2) + (655.4 + 679.1) * (469.2 - 470.5) + (679.1 + 704.7) * (470.5 - 466.2) + (704.7 + 705.3) * (466.2 - 421) + (705.3 + 705.2) * (421 - 388.9) + (705.2 + 703.9) * (388.9 - 349.6) + (703.9 + 696.1) * (349.6 - 319.8) + (696.1 + 685.2) * (319.8 - 284.4) + (685.2 + 679.4) * (284.4 - 251.1) + (679.4 + 680) * (251.1 - 217.3) + (680 + 684.7) * (217.3 - 191.2) + (684.7 + 690.7) * (191.2 - 163.4) + (690.7 + 701.2) * (163.4 - 142.1) + (701.2 + 694) * (142.1 - 134.8) + (694 + 680.7) * (134.8 - 120.4) + (680.7 + 662.6) * (120.4 - 103.1) + (662.6 + 635.4) * (103.1 - 85) + (635.4 + 613.9) * (85 - 73.5) + (613.9 + 589.7) * (73.5 - 64.6) + (589.7 + 567.6) * (64.6 - 63) * 0.5 * 0.00694$
COVERED PATIO (Non-living area)	595	$-(458.3 + 505.5) * (585.7 - 739) + (505.5 + 505.3) * (739 - 783) + (505.3 + 499.1) * (783 - 783) + (499.1 + 468.4) * (783 - 814.1) + (468.4 + 79.8) * (814.1 - 814.1) + (79.8 + 79.8) * (814.1 - 759.2) + (79.8 + 160.4) * (759.2 - 593) + (160.4 + 160.4) * (593 - 585.7) + (160.4 + 458.3) * (585.7 - 585.7) * 0.5 * 0.00694$

# 151 Eagle Chase Ln, Troutman, NC, US

Gross Living Area: 5120 sq. ft

## Level 2



# 151 Eagle Chase Ln, Troutman, NC, US

Gross Living Area: 5120 sq. ft

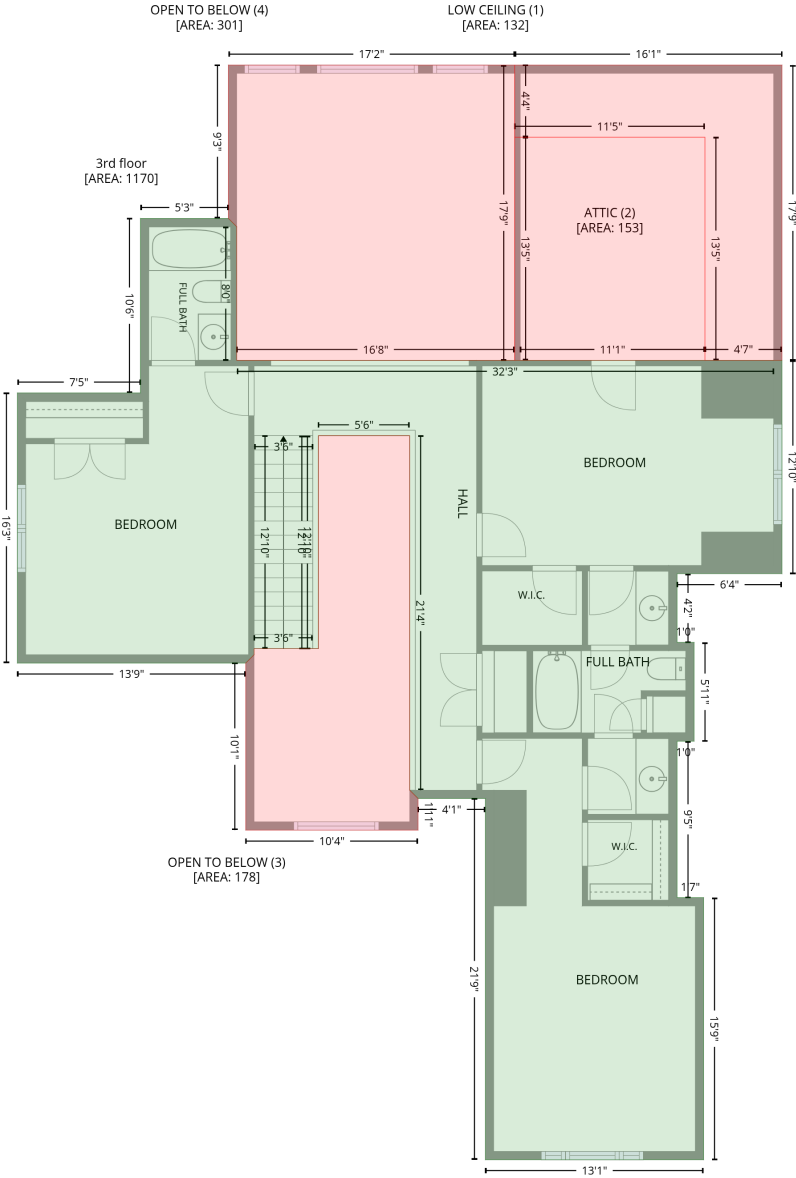
## Level 2

Space	Area (sq. ft)	Calculation <small>Coordinate Polygon Area Algorithm using inches</small>
2nd floor (Living area)	2129	$-\left((570.6 + 601.3) * (783 - 814.1) + (601.3 + 630.7) * (814.1 - 814.1) + (630.7 + 630.7) * (814.1 - 1301.2) + (630.7 + 509.1) * (1301.2 - 1301.2) + (509.1 + 509.1) * (1301.2 - 1329.9) + (509.1 + 410.9) * (1329.9 - 1329.9) + (410.9 + 410.9) * (1329.9 - 1301.2) + (410.9 + 368.5) * (1301.2 - 1301.2) + (368.5 + 368.5) * (1301.2 - 1360.1) + (368.5 + 362.5) * (1360.1 - 1360.1) + (362.5 + 362.5) * (1360.1 - 1366.1) + (362.5 + 252.4) * (1366.1 - 1366.1) + (252.4 + 252.4) * (1366.1 - 1393.4) + (252.4 + 203) * (1393.4 - 1442.8) + (203 + 129.1) * (1442.8 - 1442.8) + (129.1 + 79.8) * (1442.8 - 1393.5) + (79.8 + 79.8) * (1393.5 - 1067.3) + (79.8 + 49.1) * (1067.3 - 1036.6) + (49.1 + 49.1) * (1036.6 - 979) + (49.1 + 79.8) * (979 - 948.3) + (79.8 + 79.8) * (948.3 - 814.1) + (79.8 + 468.4) * (814.1 - 814.1) + (468.4 + 499.1) * (814.1 - 783) + (499.1 + 570.6) * (783 - 783)\right) * 0.5 * 0.00694$
GARAGE (Non-living area)	559	$-\left((410.9 + 410.9) * (1301.2 - 1329.9) + (410.9 + 509.1) * (1329.9 - 1329.9) + (509.1 + 509.1) * (1329.9 - 1301.2) + (509.1 + 630.7) * (1301.2 - 1301.2) + (630.7 + 630.7) * (1301.2 - 1612.9) + (630.7 + 362.5) * (1612.9 - 1612.9) + (362.5 + 362.5) * (1612.9 - 1360.1) + (362.5 + 368.5) * (1360.1 - 1360.1) + (368.5 + 368.5) * (1360.1 - 1301.2) + (368.5 + 410.9) * (1301.2 - 1301.2)\right) * 0.5 * 0.00694$
BALCONY (Non-living area)	512	$-\left((416 + 499.1) * (592.6 - 783) + (499.1 + 468.4) * (783 - 814.1) + (468.4 + 84.3) * (814.1 - 814.1) + (84.3 + 172.9) * (814.1 - 592.6) + (172.9 + 416) * (592.6 - 592.6)\right) * 0.5 * 0.00694$

# 151 Eagle Chase Ln, Troutman, NC, US

Gross Living Area: 5120 sq. ft

## Level 3



# 151 Eagle Chase Ln, Troutman, NC, US

Gross Living Area: 5120 sq. ft

## Level 3

Space	Area (sq. ft)	Calculation <small>Coordinate Polygon Area Algorithm using inches</small>
3rd floor (Living area)	1170	$\begin{aligned} & -((231.8 + 237.8) * (924.7 - 930.7) + (237.8 + 237.8) * (930.7 - 1027.2) + (237.8 + 624.7) * \\ & (1027.2 - 1027.2) + (624.7 + 624.7) * (1027.2 - 1027.1) + (624.7 + 630.7) * (1027.1 - 1027.1) + \\ & (630.7 + 630.7) * (1027.1 - 1181.1) + (630.7 + 555.2) * (1181.1 - 1181.1) + (555.2 + 555.2) * \\ & (1181.1 - 1230.7) + (555.2 + 567.4) * (1230.7 - 1230.7) + (567.4 + 567.4) * (1230.7 - 1301.9) + \\ & (567.4 + 555.2) * (1301.9 - 1301.9) + (555.2 + 555.2) * (1301.9 - 1414.8) + (555.2 + 574.3) * \\ & (1414.8 - 1414.8) + (574.3 + 574.3) * (1414.8 - 1603.9) + (574.3 + 417) * (1603.9 - 1603.9) + \\ & (417 + 417) * (1603.9 - 1343.3) + (417 + 368.5) * (1343.3 - 1343.3) + (368.5 + 362.5) * (1343.3 - \\ & 1337.3) + (362.5 + 362.5) * (1337.3 - 1081.6) + (362.5 + 296.7) * (1081.6 - 1081.6) + (296.7 + \\ & 296.7) * (1081.6 - 1235.2) + (296.7 + 250.4) * (1235.2 - 1235.2) + (250.4 + 250.4) * (1235.2 - \\ & 1239.6) + (250.4 + 244.4) * (1239.6 - 1245.6) + (244.4 + 79.8) * (1245.6 - 1245.6) + (79.8 + 79.8) \\ & * (1245.6 - 1050.7) + (79.8 + 168.5) * (1050.7 - 1050.7) + (168.5 + 168.5) * (1050.7 - 924.7) + \\ & (168.5 + 231.8) * (924.7 - 924.7)) * 0.5 * 0.00694 \end{aligned}$
LOW CEILING (Non-living area)	132	$\begin{aligned} & -((630.7 + 630.7) * (814.1 - 1027.1) + (630.7 + 575.2) * (1027.1 - 1027.1) + (575.2 + 575.2) * \\ & (1027.1 - 866.2) + (575.2 + 438.1) * (866.2 - 866.2) + (438.1 + 438.1) * (866.2 - 814.1) + (438.1 + \\ & 630.7) * (814.1 - 814.1)) * 0.5 * 0.00694 \end{aligned}$
ATTIC (Non-living area)	153	$\begin{aligned} & -((575.2 + 575.2) * (866.2 - 1027.1) + (575.2 + 442.1) * (1027.1 - 1027.2) + (442.1 + 438.1) * \\ & (1027.2 - 1027.2) + (438.1 + 438.1) * (1027.2 - 866.2) + (438.1 + 575.2) * (866.2 - 866.2)) * 0.5 * \\ & 0.00694 \end{aligned}$
OPEN TO BELOW (Non-living area)	178	$\begin{aligned} & -((362.5 + 362.5) * (1081.6 - 1337.3) + (362.5 + 368.5) * (1337.3 - 1343.3) + (368.5 + 368.5) * \\ & (1343.3 - 1366.1) + (368.5 + 244.4) * (1366.1 - 1366.1) + (244.4 + 244.4) * (1366.1 - 1245.6) + \\ & (244.4 + 250.4) * (1245.6 - 1239.6) + (250.4 + 250.4) * (1239.6 - 1235.2) + (250.4 + 296.7) * \\ & (1235.2 - 1235.2) + (296.7 + 296.7) * (1235.2 - 1081.6) + (296.7 + 362.5) * (1081.6 - 1081.6)) * \\ & 0.5 * 0.00694 \end{aligned}$
OPEN TO BELOW (Non-living area)	301	$\begin{aligned} & -((438.1 + 438.1) * (814.1 - 1027.2) + (438.1 + 237.8) * (1027.2 - 1027.2) + (237.8 + 237.8) * \\ & (1027.2 - 930.7) + (237.8 + 231.8) * (930.7 - 924.7) + (231.8 + 231.8) * (924.7 - 814.1) + (231.8 + \\ & 438.1) * (814.1 - 814.1)) * 0.5 * 0.00694 \end{aligned}$