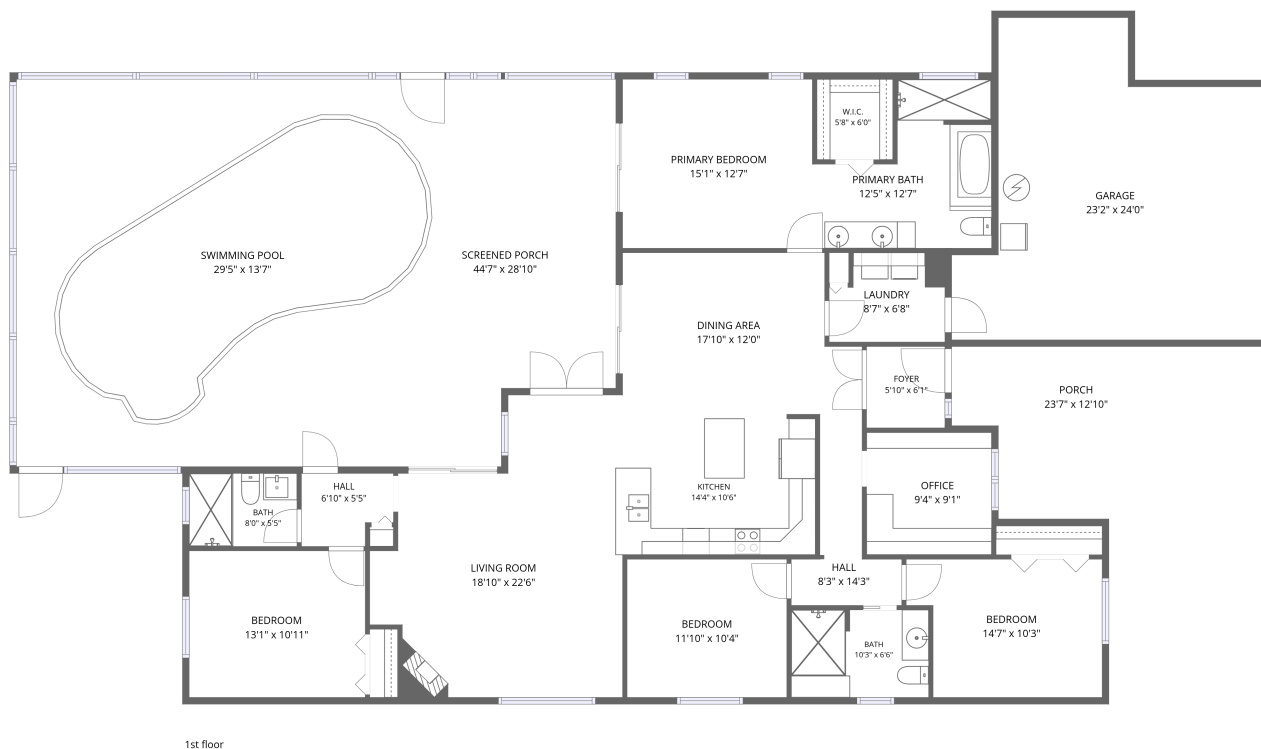


## Home data report

2033 Long Branch Lane, Greenbrook Estates, Clearwater,  
Pinellas County, Florida, United States, 33760



**Total Area: 1912 sq. ft**

1st Floor: 1912 sq. ft

Excluded: Screened porch 902 sq. ft, Porch 191 sq. ft, Garage 443 sq. ft, Walls: 199 sq. ft

## Property summary



**1** Floors



**4** Bedrooms



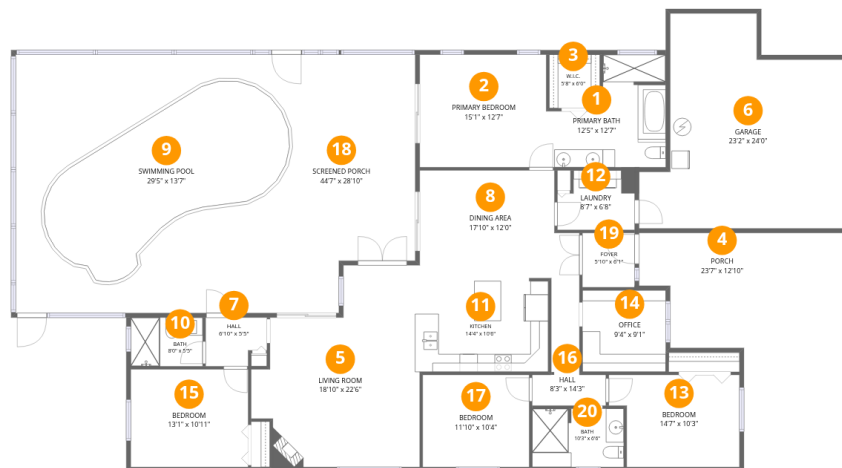
**3** Bathrooms



**1** Garages

Home data report

2033 Long Branch Lane, Greenbrook Estates, Clearwater, Pinellas County, Florida, United States, 33760



Room dimensions

Floor 1

Total:1912sqft

Excluded: 1536sqft

#		Dimensions	sqft	Counted as living area
1	Primary Bath	12'5" x 12'7"	121 sq. ft	Yes
2	Primary Bedroom	15'1" x 12'7"	184 sq. ft	Yes
3	W.I.C.	5'8" x 6'0"	34 sq. ft	Yes
4	Porch	23'7" x 12'10"	191 sq. ft	No
5	Living Room	18'10" x 22'6"	339 sq. ft	Yes
6	Garage	23'2" x 24'0"	443 sq. ft	No
7	Hall	6'10" x 5'5"	34 sq. ft	Yes
8	Dining Area	17'10" x 12'0"	195 sq. ft	Yes
9	Swimming Pool	29'5" x 13'7"	336 sq. ft	No
10	Bath	8'0" x 5'5"	44 sq. ft	Yes
11	Kitchen	14'4" x 10'6"	150 sq. ft	Yes

Home data report

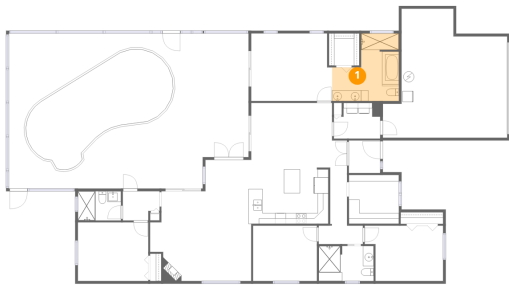
**2033 Long Branch Lane, Greenbrook Estates, Clearwater,  
Pinellas County, Florida, United States, 33760**

#		Dimensions	sqft	Counted as living area
12	Laundry	8'7" x 6'8"	53 sq. ft	Yes
13	Bedroom	14'7" x 10'3"	137 sq. ft	Yes
14	Office	9'4" x 9'1"	85 sq. ft	Yes
15	Bedroom	13'1" x 10'11"	143 sq. ft	Yes
16	Hall	8'3" x 14'3"	62 sq. ft	Yes
17	Bedroom	11'10" x 10'4"	122 sq. ft	Yes
18	Screened Porch	44'7" x 28'10"	1239 sq. ft	No
19	Foyer	5'10" x 6'1"	35 sq. ft	Yes
20	Bath	10'3" x 6'6"	66 sq. ft	Yes

2033 Long Branch Lane, Greenbrook Estates, Clearwater,  
Pinellas County, Florida, United States, 33760

**1** Floor 1 - Primary Bath

---

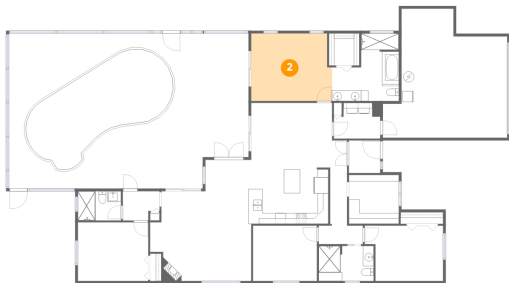


Dimensions: 12'5" x 12'7"  
Area: 121 sq. ft  
Counted as living area: Yes

Heated: Yes  
Finished: Yes  
Enclosed: Yes  
Contiguous: Yes  
Permitted: Yes  
Wet space: Yes  
Addition: No  
Conversion: No

**2** Floor 1 - Primary Bedroom

---



Dimensions: 15'1" x 12'7"  
Area: 184 sq. ft  
Counted as living area: Yes

Heated: Yes  
Finished: Yes  
Enclosed: Yes  
Contiguous: Yes  
Permitted: Yes  
Wet space: No  
Addition: No  
Conversion: No

2033 Long Branch Lane, Greenbrook Estates, Clearwater,  
Pinellas County, Florida, United States, 33760

**3** Floor 1 - W.I.C.



Dimensions: 5'8" x 6'0"  
Area: 34 sq. ft  
Counted as living area: Yes

Heated: Yes  
Finished: Yes  
Enclosed: Yes  
Contiguous: Yes  
Permitted: Yes  
Wet space: No  
Addition: No  
Conversion: No

**4** Floor 1 - Porch



Dimensions: 23'7" x 12'10"  
Area: 191 sq. ft  
Counted as living area: No

Heated: No  
Finished: No  
Enclosed: No  
Contiguous: Yes  
Permitted: Yes  
Wet space: No  
Addition: No  
Conversion: No

**5** Floor 1 - Living Room



Dimensions: 18'10" x 22'6"  
Area: 339 sq. ft  
Counted as living area: Yes

Heated: Yes  
Finished: Yes  
Enclosed: Yes  
Contiguous: Yes  
Permitted: Yes  
Wet space: No  
Addition: No  
Conversion: No

2033 Long Branch Lane, Greenbrook Estates, Clearwater,  
Pinellas County, Florida, United States, 33760

**6** Floor 1 - Garage



Dimensions: 23'2" x 24'0"  
Area: 443 sq. ft  
Counted as living area: No

Heated: No  
Finished: No  
Enclosed: Yes  
Contiguous: Yes  
Permitted: Yes  
Wet space: No  
Addition: No  
Conversion: No

**7** Floor 1 - Hall



Dimensions: 6'10" x 5'5"  
Area: 34 sq. ft  
Counted as living area: Yes

Heated: Yes  
Finished: Yes  
Enclosed: Yes  
Contiguous: Yes  
Permitted: Yes  
Wet space: No  
Addition: No  
Conversion: No

**8** Floor 1 - Dining Area



Dimensions: 17'10" x 12'0"  
Area: 195 sq. ft  
Counted as living area: Yes

Heated: Yes  
Finished: Yes  
Enclosed: Yes  
Contiguous: Yes  
Permitted: Yes  
Wet space: No  
Addition: No  
Conversion: No

2033 Long Branch Lane, Greenbrook Estates, Clearwater,  
Pinellas County, Florida, United States, 33760

**9** Floor 1 - Swimming Pool



Dimensions: 29'5" x 13'7"  
Area: 336 sq. ft  
Counted as living area: No

Heated: No  
Finished: No  
Enclosed: No  
Contiguous: Yes  
Permitted: No  
Wet space: No  
Addition: No  
Conversion: No

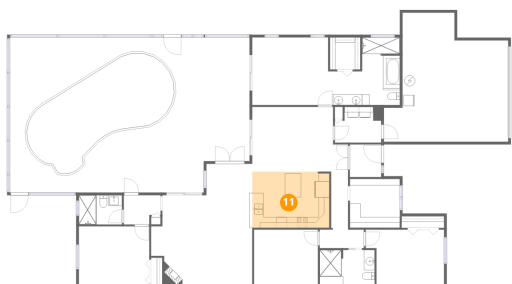
**10** Floor 1 - Bath



Dimensions: 8'0" x 5'5"  
Area: 44 sq. ft  
Counted as living area: Yes

Heated: Yes  
Finished: Yes  
Enclosed: Yes  
Contiguous: Yes  
Permitted: Yes  
Wet space: Yes  
Addition: No  
Conversion: No

**11** Floor 1 - Kitchen



Dimensions: 14'4" x 10'6"  
Area: 150 sq. ft  
Counted as living area: Yes

Heated: Yes  
Finished: Yes  
Enclosed: Yes  
Contiguous: Yes  
Permitted: Yes  
Wet space: No  
Addition: No  
Conversion: No

2033 Long Branch Lane, Greenbrook Estates, Clearwater,  
Pinellas County, Florida, United States, 33760

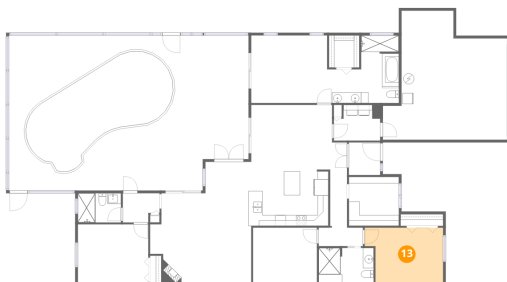
**12** Floor 1 - Laundry



Dimensions: 8'7" x 6'8"  
Area: 53 sq. ft  
Counted as living area: Yes

Heated: Yes  
Finished: Yes  
Enclosed: Yes  
Contiguous: Yes  
Permitted: Yes  
Wet space: No  
Addition: No  
Conversion: No

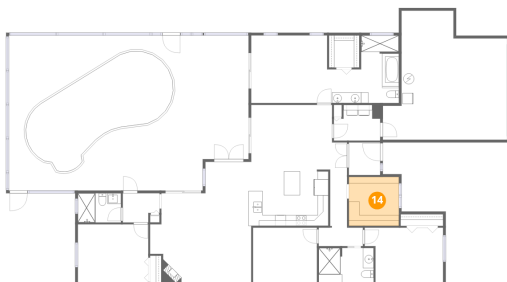
**13** Floor 1 - Bedroom



Dimensions: 14'7" x 10'3"  
Area: 137 sq. ft  
Counted as living area: Yes

Heated: Yes  
Finished: Yes  
Enclosed: Yes  
Contiguous: Yes  
Permitted: Yes  
Wet space: No  
Addition: No  
Conversion: No

**14** Floor 1 - Office



Dimensions: 9'4" x 9'1"  
Area: 85 sq. ft  
Counted as living area: Yes

Heated: Yes  
Finished: Yes  
Enclosed: Yes  
Contiguous: Yes  
Permitted: Yes  
Wet space: No  
Addition: No  
Conversion: No

2033 Long Branch Lane, Greenbrook Estates, Clearwater,  
Pinellas County, Florida, United States, 33760

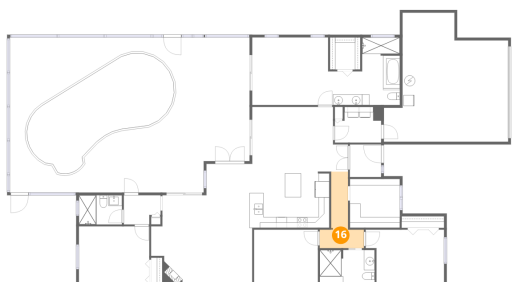
**15** Floor 1 - Bedroom



Dimensions: 13'1" x 10'11"  
Area: 143 sq. ft  
Counted as living area: Yes

Heated: Yes  
Finished: Yes  
Enclosed: Yes  
Contiguous: Yes  
Permitted: Yes  
Wet space: No  
Addition: No  
Conversion: No

**16** Floor 1 - Hall



Dimensions: 8'3" x 14'3"  
Area: 62 sq. ft  
Counted as living area: Yes

Heated: Yes  
Finished: Yes  
Enclosed: Yes  
Contiguous: Yes  
Permitted: Yes  
Wet space: No  
Addition: No  
Conversion: No

**17** Floor 1 - Bedroom

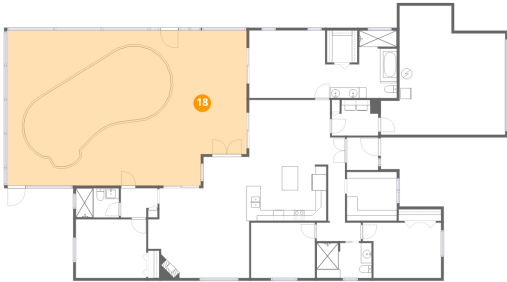


Dimensions: 11'10" x 10'4"  
Area: 122 sq. ft  
Counted as living area: Yes

Heated: Yes  
Finished: Yes  
Enclosed: Yes  
Contiguous: Yes  
Permitted: Yes  
Wet space: No  
Addition: No  
Conversion: No

2033 Long Branch Lane, Greenbrook Estates, Clearwater,  
Pinellas County, Florida, United States, 33760

**18** Floor 1 - Screened Porch



Dimensions: 44'7" x 28'10"  
Area: 1239 sq. ft  
Counted as living area: No

Heated: No  
Finished: No  
Enclosed: No  
Contiguous: Yes  
Permitted: Yes  
Wet space: No  
Addition: No  
Conversion: No

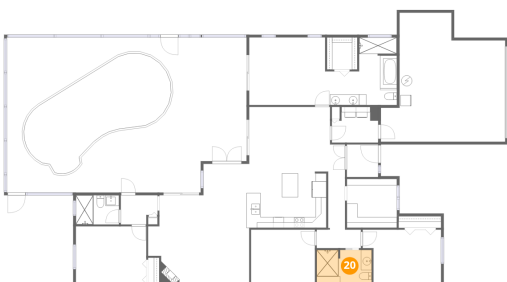
**19** Floor 1 - Foyer



Dimensions: 5'10" x 6'1"  
Area: 35 sq. ft  
Counted as living area: Yes

Heated: Yes  
Finished: Yes  
Enclosed: Yes  
Contiguous: Yes  
Permitted: Yes  
Wet space: No  
Addition: No  
Conversion: No

**20** Floor 1 - Bath



Dimensions: 10'3" x 6'6"  
Area: 66 sq. ft  
Counted as living area: Yes

Heated: Yes  
Finished: Yes  
Enclosed: Yes  
Contiguous: Yes  
Permitted: Yes  
Wet space: Yes  
Addition: No  
Conversion: No