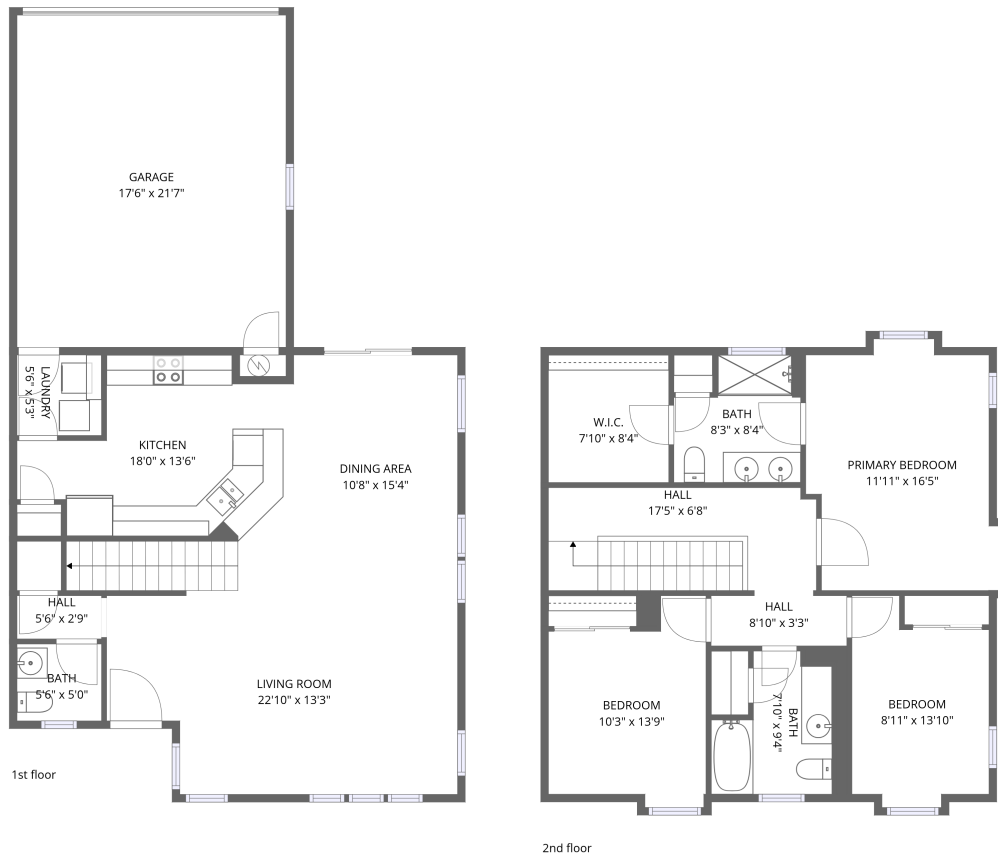


# Home data report

## 6377 S Xanadu Way, Englewood, CO, US




**Total Area: 1608 sq. ft**

1st Floor: 768 sq. ft, 2nd Floor: 840 sq. ft

Excluded: Garage 379 sq. ft, Walls: 131 sq. ft

### Property summary

 **2** Floors

 **3** Bedrooms

 **2** Bathrooms

Home data report

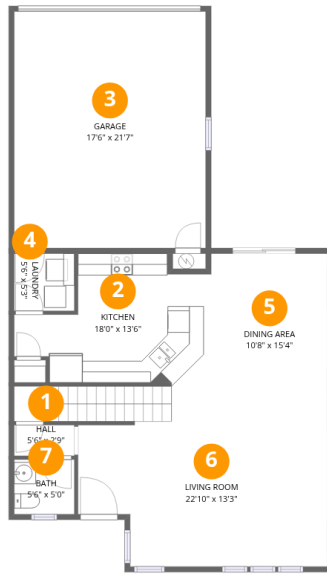
**6377 S Xanadu Way,Englewood,CO,US**

 **1**  
Half baths

 **1**  
Garages

# Home data report

## 6377 S Xanadu Way, Englewood, CO, US



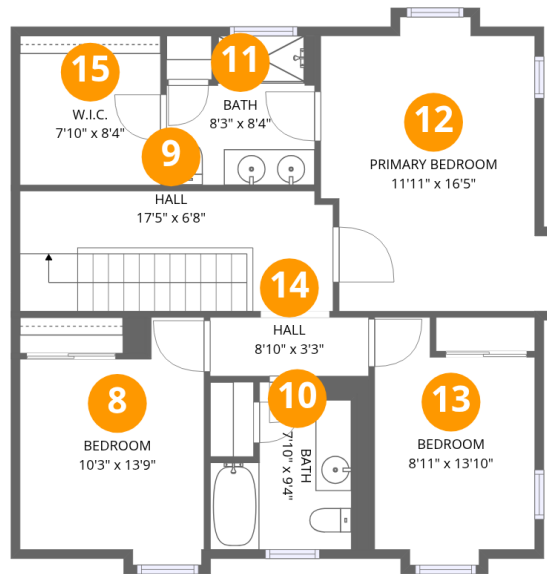
### Room dimensions

Floor 1

Total: 768sqft

Excluded: 379sqft

#		Dimensions	sqft	Counted as living area
1	Hall	5'6" x 2'9"	15 sq. ft	Yes
2	Kitchen	18'0" x 13'6"	243 sq. ft	Yes
3	Garage	17'6" x 21'7"	379 sq. ft	No
4	Laundry	5'6" x 5'3"	29 sq. ft	Yes
5	Dining Area	10'8" x 15'4"	164 sq. ft	Yes
6	Living Room	22'10" x 13'3"	302 sq. ft	Yes
7	Bath	5'6" x 5'0"	27 sq. ft	Yes



## Room dimensions

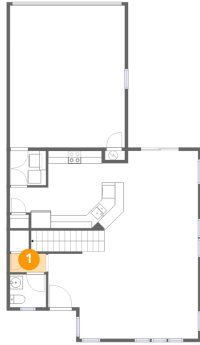
Floor 2

Total: 840 sqft

Excluded: 0 sqft

#		Dimensions	sqft	Counted as living area
8	Bedroom	10'3" x 13'9"	141 sq. ft	Yes
9	Hall	17'5" x 6'8"	117 sq. ft	Yes
10	Bath	7'10" x 9'4"	73 sq. ft	Yes
11	Bath	8'3" x 8'4"	68 sq. ft	Yes
12	Primary Bedroom	11'11" x 16'5"	196 sq. ft	Yes
13	Bedroom	8'11" x 13'10"	123 sq. ft	Yes
14	Hall	8'10" x 3'3"	29 sq. ft	Yes
15	W.I.C.	7'10" x 8'4"	65 sq. ft	Yes

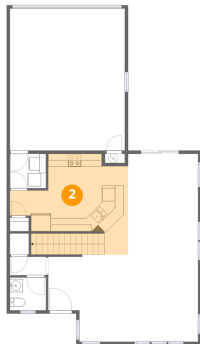
## 1 Floor 1 - Hall



Dimensions: 5'6" x 2'9"  
Area: 15 sq. ft  
Counted as living area: Yes

Heated: Yes  
Finished: Yes  
Enclosed: Yes  
Contiguous: Yes  
Permitted: Yes  
Wet space: No  
Addition: No  
Conversion: No

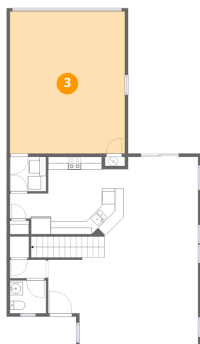
## 2 Floor 1 - Kitchen



Dimensions: 18'0" x 13'6"  
Area: 243 sq. ft  
Counted as living area: Yes

Heated: Yes  
Finished: Yes  
Enclosed: Yes  
Contiguous: Yes  
Permitted: Yes  
Wet space: No  
Addition: No  
Conversion: No

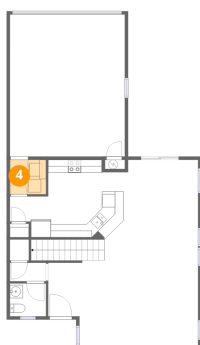
### 3 Floor 1 - Garage



Dimensions: 17'6" x 21'7"  
Area: 379 sq. ft  
Counted as living area: No

Heated: No  
Finished: No  
Enclosed: Yes  
Contiguous: Yes  
Permitted: Yes  
Wet space: No  
Addition: No  
Conversion: No

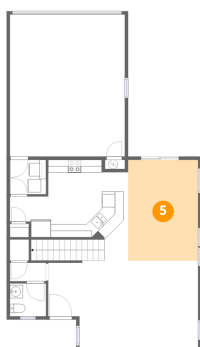
### 4 Floor 1 - Laundry



Dimensions: 5'6" x 5'3"  
Area: 29 sq. ft  
Counted as living area: Yes

Heated: Yes  
Finished: Yes  
Enclosed: Yes  
Contiguous: Yes  
Permitted: Yes  
Wet space: No  
Addition: No  
Conversion: No

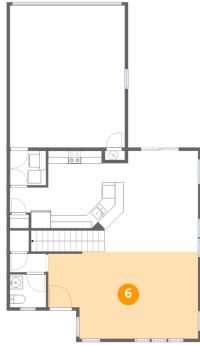
### 5 Floor 1 - Dining Area



Dimensions: 10'8" x 15'4"  
Area: 164 sq. ft  
Counted as living area: Yes

Heated: Yes  
Finished: Yes  
Enclosed: Yes  
Contiguous: Yes  
Permitted: Yes  
Wet space: No  
Addition: No  
Conversion: No

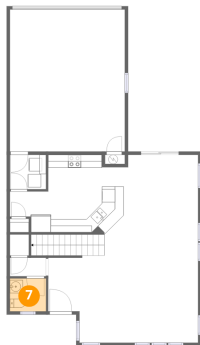
## 6 Floor 1 - Living Room



Dimensions: 22'10" x 13'3"  
Area: 302 sq. ft  
Counted as living area: Yes

Heated: Yes  
Finished: Yes  
Enclosed: Yes  
Contiguous: Yes  
Permitted: Yes  
Wet space: No  
Addition: No  
Conversion: No

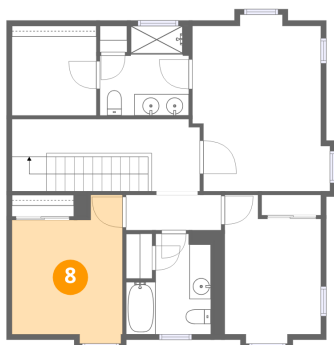
## 7 Floor 1 - Bath



Dimensions: 5'6" x 5'0"  
Area: 27 sq. ft  
Counted as living area: Yes

Heated: Yes  
Finished: Yes  
Enclosed: Yes  
Contiguous: Yes  
Permitted: Yes  
Wet space: Yes  
Addition: No  
Conversion: No

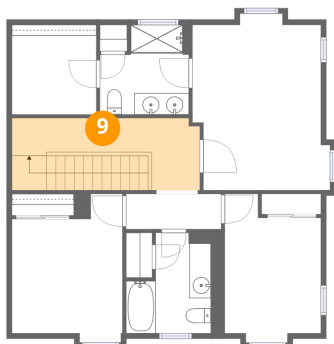
## 8 Floor 2 - Bedroom



Dimensions: 10'3" x 13'9"  
Area: 141 sq. ft  
Counted as living area: Yes

Heated: Yes  
Finished: Yes  
Enclosed: Yes  
Contiguous: Yes  
Permitted: Yes  
Wet space: No  
Addition: No  
Conversion: No

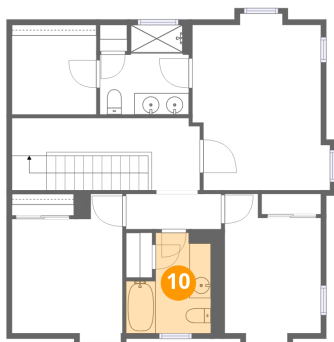
### 9 Floor 2 - Hall



Dimensions: 17'5" x 6'8"  
Area: 117 sq. ft  
Counted as living area: Yes

Heated: Yes  
Finished: Yes  
Enclosed: Yes  
Contiguous: Yes  
Permitted: Yes  
Wet space: No  
Addition: No  
Conversion: No

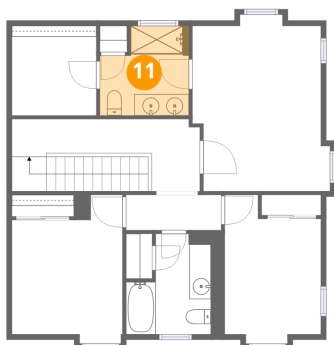
### 10 Floor 2 - Bath



Dimensions: 7'10" x 9'4"  
Area: 73 sq. ft  
Counted as living area: Yes

Heated: Yes  
Finished: Yes  
Enclosed: Yes  
Contiguous: Yes  
Permitted: Yes  
Wet space: Yes  
Addition: No  
Conversion: No

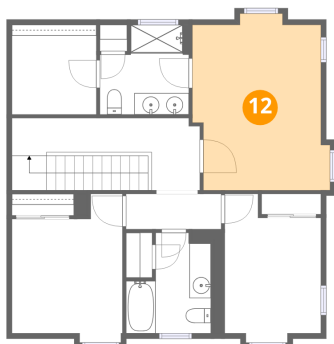
### 11 Floor 2 - Bath



Dimensions: 8'3" x 8'4"  
Area: 68 sq. ft  
Counted as living area: Yes

Heated: Yes  
Finished: Yes  
Enclosed: Yes  
Contiguous: Yes  
Permitted: Yes  
Wet space: Yes  
Addition: No  
Conversion: No

## 12 Floor 2 - Primary Bedroom



Dimensions: 11'11" x 16'5"  
Area: 196 sq. ft  
Counted as living area: Yes

Heated: Yes  
Finished: Yes  
Enclosed: Yes  
Contiguous: Yes  
Permitted: Yes  
Wet space: No  
Addition: No  
Conversion: No

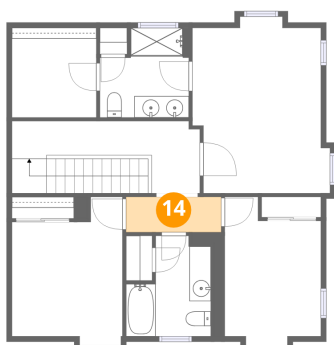
## 13 Floor 2 - Bedroom



Dimensions: 8'11" x 13'10"  
Area: 123 sq. ft  
Counted as living area: Yes

Heated: Yes  
Finished: Yes  
Enclosed: Yes  
Contiguous: Yes  
Permitted: Yes  
Wet space: No  
Addition: No  
Conversion: No

## 14 Floor 2 - Hall

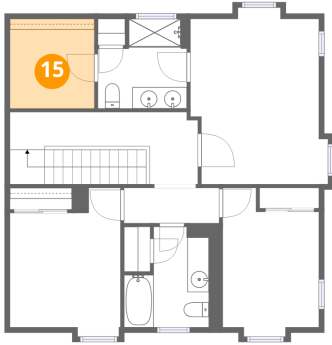


Dimensions: 8'10" x 3'3"  
Area: 29 sq. ft  
Counted as living area: Yes

Heated: Yes  
Finished: Yes  
Enclosed: Yes  
Contiguous: Yes  
Permitted: Yes  
Wet space: No  
Addition: No  
Conversion: No

**15** Floor 2 - W.I.C.

---



Dimensions: 7'10" x 8'4"  
Area: 65 sq. ft  
Counted as living area: Yes

Heated: Yes  
Finished: Yes  
Enclosed: Yes  
Contiguous: Yes  
Permitted: Yes  
Wet space: No  
Addition: No  
Conversion: No