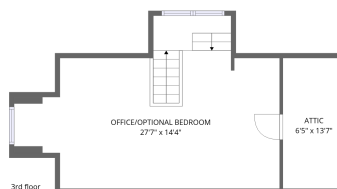
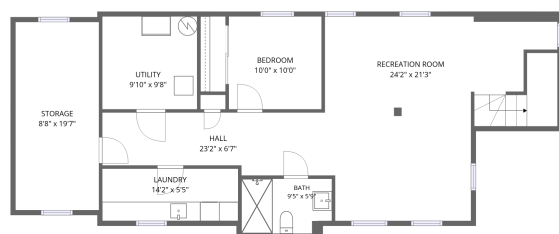
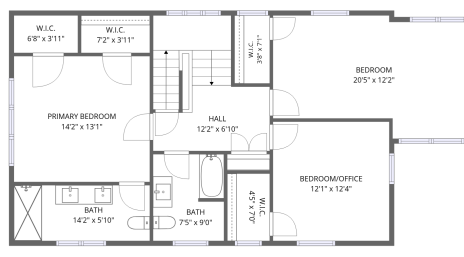
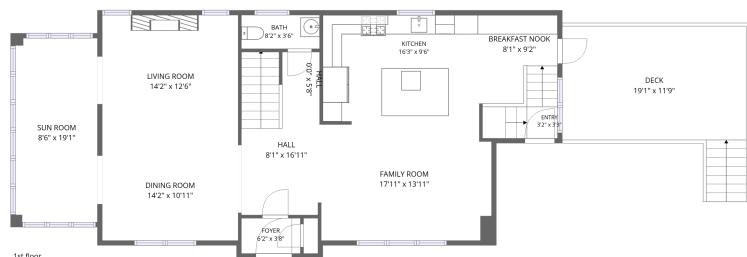


## Home data report

# 931 Lathrop Avenue, River Forest, Cook County, Illinois, United States, 60305



**Total Area: 3077 sq. ft**

Basement: 839 sq. ft, 1st Floor: 1222 sq. ft, 2nd Floor: 1016 sq. ft, 3rd Floor: 0 sq. ft

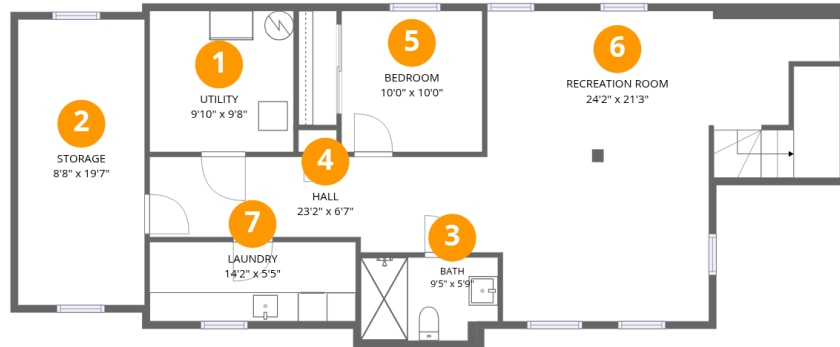
Excluded: Storage 173 sq. ft, Utility 96 sq. ft, Deck 253 sq. ft, Low ceiling 92 sq. ft, Office/optional bedroom 374 sq. ft, Walls: 283 sq. ft

## Property summary



## Home data report

931 Lathrop Avenue, River Forest, Cook County, Illinois, United States, 60305



## Room dimensions

Floor 1 Below grade

Total:839sqft

Excluded: 269sqft

#		Dimensions	sqft	Counted as living area
1	Utility	9'10" x 9'8"	95 sq. ft	No
2	Storage	8'8" x 19'7"	170 sq. ft	No
3	Bath	9'5" x 5'9"	52 sq. ft	Yes
4	Hall	23'2" x 6'7"	137 sq. ft	Yes
5	Bedroom	10'0" x 10'0"	93 sq. ft	Yes
6	Recreation Room	24'2" x 21'3"	417 sq. ft	Yes
7	Laundry	14'2" x 5'5"	77 sq. ft	Yes

Home data report

931 Lathrop Avenue, River Forest, Cook County, Illinois, United States, 60305



## Room dimensions

Floor 2

Total:1222sqft Excluded: 253sqft

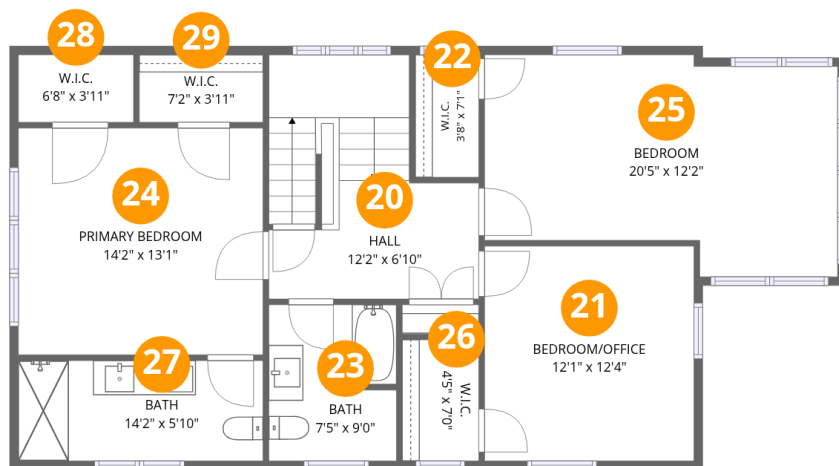
#		Dimensions	sqft	Counted as living area
8	Hall	8'1" x 16'11"	136 sq. ft	Yes
9	Sun Room	8'6" x 19'1"	163 sq. ft	Yes
10	Kitchen	16'3" x 9'6"	155 sq. ft	Yes
11	Bath	8'2" x 3'6"	28 sq. ft	Yes
12	Living Room	14'2" x 12'6"	177 sq. ft	Yes
13	Foyer	6'2" x 3'8"	22 sq. ft	Yes
14	Deck	19'1" x 11'9"	253 sq. ft	No
15	Entry	3'2" x 3'3"	26 sq. ft	Yes
16	Family Room	17'11" x 13'11"	242 sq. ft	Yes
17	Dining Room	14'2" x 10'11"	154 sq. ft	Yes
18	Hall	0'0" x 5'8"	0 sq. ft	Yes

Home data report

**931 Lathrop Avenue, River Forest, Cook County, Illinois, United States, 60305**

#		Dimensions	sqft	Counted as living area
19	Breakfast Nook	8'1" x 9'2"	77 sq. ft	Yes

931 Lathrop Avenue, River Forest, Cook County, Illinois, United States, 60305



### Room dimensions

Floor 3

Total:1016sqft Excluded: 0sqft

#		Dimensions	sqft	Counted as living area
20	Hall	12'2" x 6'10"	139 sq. ft	Yes
21	Bedroom/Office	12'1" x 12'4"	150 sq. ft	Yes
22	W.I.C.	3'8" x 7'1"	26 sq. ft	Yes
23	Bath	7'5" x 9'0"	66 sq. ft	Yes
24	Primary Bedroom	14'2" x 13'1"	185 sq. ft	Yes
25	Bedroom	20'5" x 12'2"	230 sq. ft	Yes
26	W.I.C.	4'5" x 7'0"	31 sq. ft	Yes
27	Bath	14'2" x 5'10"	82 sq. ft	Yes
28	W.I.C.	6'8" x 3'11"	26 sq. ft	Yes
29	W.I.C.	7'2" x 3'11"	28 sq. ft	Yes

931 Lathrop Avenue, River Forest, Cook County, Illinois, United States, 60305



### Room dimensions

Floor 4

Total:0sqft

Excluded: 466sqft

#		Dimensions	sqft	Counted as living area
30	Attic	6'5" x 13'7"	88 sq. ft	No
31	OFFICE/OPTIONAL Bedroom	27'7" x 14'4"	374 sq. ft	No

## 1 Floor 1 - Utility



Dimensions: 9'10" x 9'8"  
Area: 95 sq. ft  
Counted as living area: No

Heated: Yes  
Finished: No  
Enclosed: Yes  
Contiguous: Yes  
Permitted: Yes  
Wet space: No  
Addition: No  
Conversion: No

## 2 Floor 1 - Storage



Dimensions: 8'8" x 19'7"  
Area: 170 sq. ft  
Counted as living area: No

Heated: No  
Finished: No  
Enclosed: No  
Contiguous: No  
Permitted: Yes  
Wet space: No  
Addition: No  
Conversion: No

931 Lathrop Avenue, River Forest, Cook County, Illinois, United States, 60305

**3** Floor 1 - Bath



Dimensions: 9'5" x 5'9"  
Area: 52 sq. ft  
Counted as living area: Yes

Heated: Yes  
Finished: Yes  
Enclosed: Yes  
Contiguous: Yes  
Permitted: Yes  
Wet space: Yes  
Addition: No  
Conversion: No

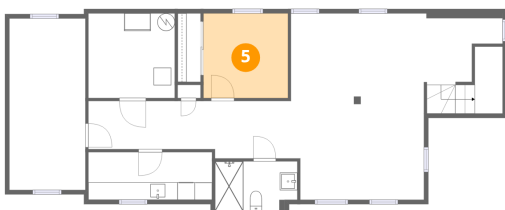
**4** Floor 1 - Hall



Dimensions: 23'2" x 6'7"  
Area: 137 sq. ft  
Counted as living area: Yes

Heated: Yes  
Finished: Yes  
Enclosed: Yes  
Contiguous: Yes  
Permitted: Yes  
Wet space: No  
Addition: No  
Conversion: No

**5** Floor 1 - Bedroom



Dimensions: 10'0" x 10'0"  
Area: 93 sq. ft  
Counted as living area: Yes

Heated: Yes  
Finished: Yes  
Enclosed: Yes  
Contiguous: Yes  
Permitted: Yes  
Wet space: No  
Addition: No  
Conversion: No

### 6 Floor 1 - Recreation Room



Dimensions: 24'2" x 21'3"  
Area: 417 sq. ft  
Counted as living area: Yes

Heated: Yes  
Finished: Yes  
Enclosed: Yes  
Contiguous: Yes  
Permitted: Yes  
Wet space: No  
Addition: No  
Conversion: No

### 7 Floor 1 - Laundry



Dimensions: 14'2" x 5'5"  
Area: 77 sq. ft  
Counted as living area: Yes

Heated: Yes  
Finished: Yes  
Enclosed: Yes  
Contiguous: Yes  
Permitted: Yes  
Wet space: No  
Addition: No  
Conversion: No

### 8 Floor 2 - Hall



Dimensions: 8'1" x 16'11"  
Area: 136 sq. ft  
Counted as living area: Yes

Heated: Yes  
Finished: Yes  
Enclosed: Yes  
Contiguous: Yes  
Permitted: Yes  
Wet space: No  
Addition: No  
Conversion: No

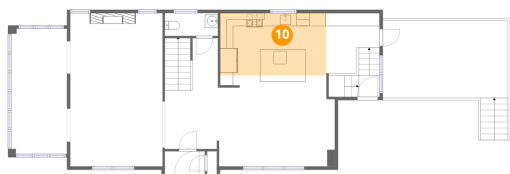
### 9 Floor 2 - Sun Room



Dimensions: 8'6" x 19'1"  
Area: 163 sq. ft  
Counted as living area: Yes

Heated: Yes  
Finished: Yes  
Enclosed: Yes  
Contiguous: Yes  
Permitted: Yes  
Wet space: No  
Addition: No  
Conversion: No

### 10 Floor 2 - Kitchen



Dimensions: 16'3" x 9'6"  
Area: 155 sq. ft  
Counted as living area: Yes

Heated: Yes  
Finished: Yes  
Enclosed: Yes  
Contiguous: Yes  
Permitted: Yes  
Wet space: No  
Addition: No  
Conversion: No

### 11 Floor 2 - Bath



Dimensions: 8'2" x 3'6"  
Area: 28 sq. ft  
Counted as living area: Yes

Heated: Yes  
Finished: Yes  
Enclosed: Yes  
Contiguous: Yes  
Permitted: Yes  
Wet space: Yes  
Addition: No  
Conversion: No

**12** Floor 2 - Living Room



Dimensions: 14'2" x 12'6"  
Area: 177 sq. ft  
Counted as living area: Yes

Heated: Yes  
Finished: Yes  
Enclosed: Yes  
Contiguous: Yes  
Permitted: Yes  
Wet space: No  
Addition: No  
Conversion: No

**13** Floor 2 - Foyer



Dimensions: 6'2" x 3'8"  
Area: 22 sq. ft  
Counted as living area: Yes

Heated: Yes  
Finished: Yes  
Enclosed: Yes  
Contiguous: Yes  
Permitted: Yes  
Wet space: No  
Addition: No  
Conversion: No

**14** Floor 2 - Deck



Dimensions: 19'1" x 11'9"  
Area: 253 sq. ft  
Counted as living area: No

Heated: No  
Finished: No  
Enclosed: No  
Contiguous: Yes  
Permitted: Yes  
Wet space: No  
Addition: No  
Conversion: No

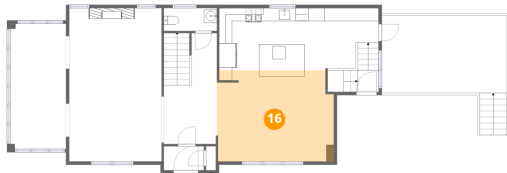
### 15 Floor 2 - Entry



Dimensions: 3'2" x 3'3"  
Area: 26 sq. ft  
Counted as living area: Yes

Heated: Yes  
Finished: Yes  
Enclosed: Yes  
Contiguous: Yes  
Permitted: Yes  
Wet space: No  
Addition: No  
Conversion: No

### 16 Floor 2 - Family Room



Dimensions: 17'11" x 13'11"  
Area: 242 sq. ft  
Counted as living area: Yes

Heated: Yes  
Finished: Yes  
Enclosed: Yes  
Contiguous: Yes  
Permitted: Yes  
Wet space: No  
Addition: No  
Conversion: No

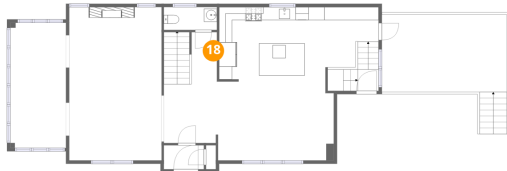
### 17 Floor 2 - Dining Room



Dimensions: 14'2" x 10'11"  
Area: 154 sq. ft  
Counted as living area: Yes

Heated: Yes  
Finished: Yes  
Enclosed: Yes  
Contiguous: Yes  
Permitted: Yes  
Wet space: No  
Addition: No  
Conversion: No

**18** Floor 2 - Hall



Dimensions: 0'0" x 5'8"  
Area: 0 sq. ft  
Counted as living area: Yes

Heated: Yes  
Finished: Yes  
Enclosed: Yes  
Contiguous: Yes  
Permitted: Yes  
Wet space: No  
Addition: No  
Conversion: No

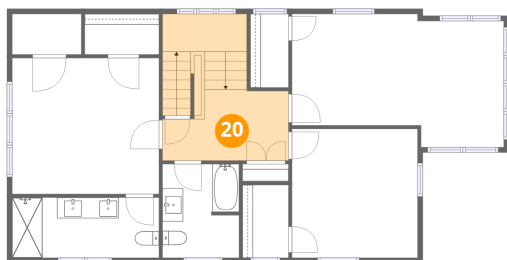
**19** Floor 2 - Breakfast Nook



Dimensions: 8'1" x 9'2"  
Area: 77 sq. ft  
Counted as living area: Yes

Heated: Yes  
Finished: Yes  
Enclosed: Yes  
Contiguous: Yes  
Permitted: Yes  
Wet space: No  
Addition: No  
Conversion: No

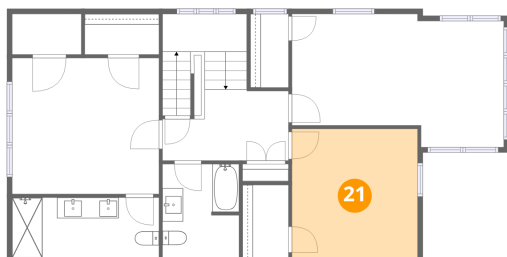
**20** Floor 3 - Hall



Dimensions: 12'2" x 6'10"  
Area: 139 sq. ft  
Counted as living area: Yes

Heated: Yes  
Finished: Yes  
Enclosed: Yes  
Contiguous: Yes  
Permitted: Yes  
Wet space: No  
Addition: No  
Conversion: No

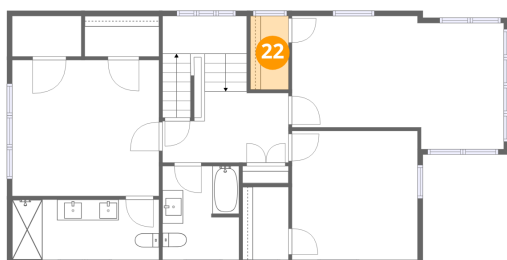
### 21 Floor 3 - Bedroom/Office



Dimensions: 12'1" x 12'4"  
Area: 150 sq. ft  
Counted as living area: Yes

Heated: Yes  
Finished: Yes  
Enclosed: Yes  
Contiguous: Yes  
Permitted: Yes  
Wet space: No  
Addition: No  
Conversion: No

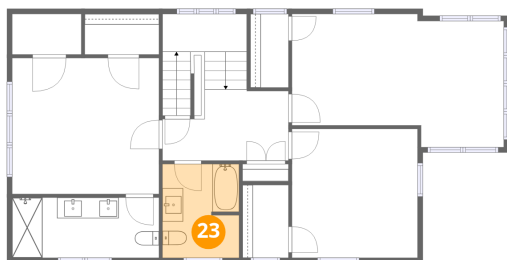
### 22 Floor 3 - W.I.C.



Dimensions: 3'8" x 7'1"  
Area: 26 sq. ft  
Counted as living area: Yes

Heated: Yes  
Finished: Yes  
Enclosed: Yes  
Contiguous: Yes  
Permitted: Yes  
Wet space: No  
Addition: No  
Conversion: No

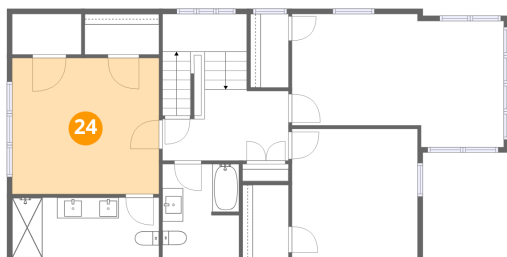
### 23 Floor 3 - Bath



Dimensions: 7'5" x 9'0"  
Area: 66 sq. ft  
Counted as living area: Yes

Heated: Yes  
Finished: Yes  
Enclosed: Yes  
Contiguous: Yes  
Permitted: Yes  
Wet space: Yes  
Addition: No  
Conversion: No

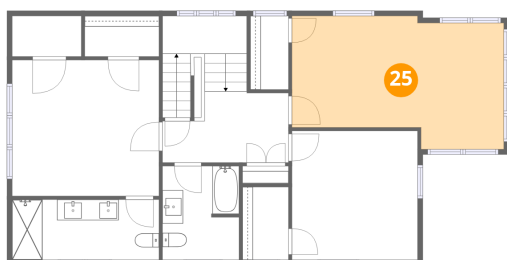
### 24 Floor 3 - Primary Bedroom



Dimensions: 14'2" x 13'1"  
Area: 185 sq. ft  
Counted as living area: Yes

Heated: Yes  
Finished: Yes  
Enclosed: Yes  
Contiguous: Yes  
Permitted: Yes  
Wet space: No  
Addition: No  
Conversion: No

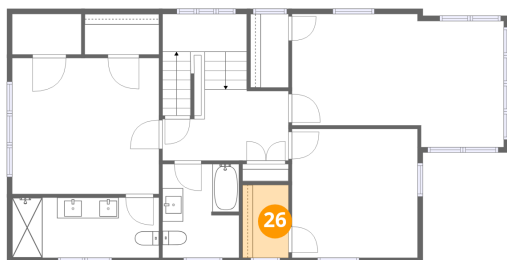
### 25 Floor 3 - Bedroom



Dimensions: 20'5" x 12'2"  
Area: 230 sq. ft  
Counted as living area: Yes

Heated: Yes  
Finished: Yes  
Enclosed: Yes  
Contiguous: Yes  
Permitted: Yes  
Wet space: No  
Addition: No  
Conversion: No

### 26 Floor 3 - W.I.C.

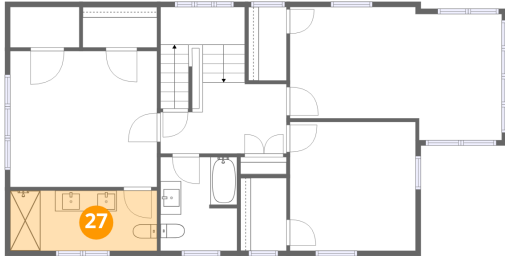


Dimensions: 4'5" x 7'0"  
Area: 31 sq. ft  
Counted as living area: Yes

Heated: Yes  
Finished: Yes  
Enclosed: Yes  
Contiguous: Yes  
Permitted: Yes  
Wet space: No  
Addition: No  
Conversion: No

931 Lathrop Avenue, River Forest, Cook County, Illinois, United States, 60305

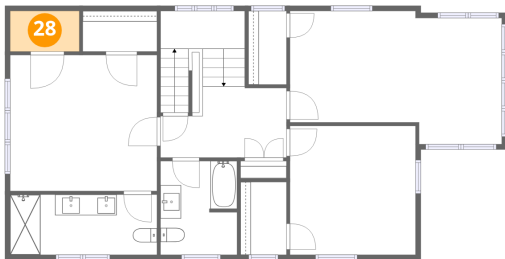
**27** Floor 3 - Bath



Dimensions: 14'2" x 5'10"  
Area: 82 sq. ft  
Counted as living area: Yes

Heated: Yes  
Finished: Yes  
Enclosed: Yes  
Contiguous: Yes  
Permitted: Yes  
Wet space: Yes  
Addition: No  
Conversion: No

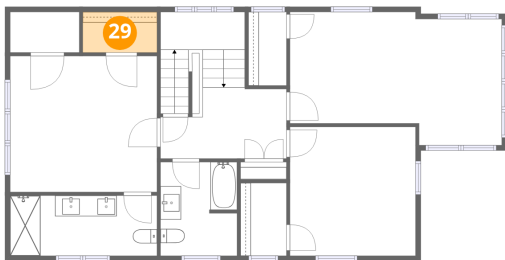
**28** Floor 3 - W.I.C.



Dimensions: 6'8" x 3'11"  
Area: 26 sq. ft  
Counted as living area: Yes

Heated: Yes  
Finished: Yes  
Enclosed: Yes  
Contiguous: Yes  
Permitted: Yes  
Wet space: No  
Addition: No  
Conversion: No

**29** Floor 3 - W.I.C.

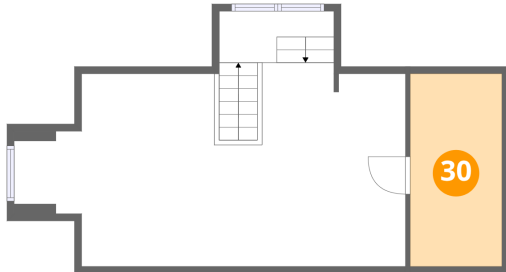


Dimensions: 7'2" x 3'11"  
Area: 28 sq. ft  
Counted as living area: Yes

Heated: Yes  
Finished: Yes  
Enclosed: Yes  
Contiguous: Yes  
Permitted: Yes  
Wet space: No  
Addition: No  
Conversion: No

**30** Floor 4 - Attic

---

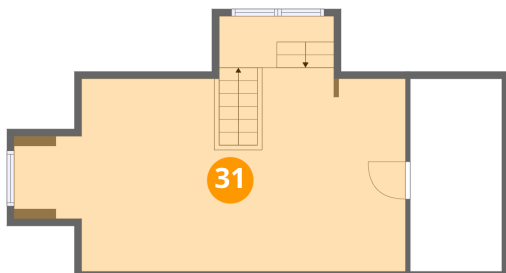


Dimensions: 6'5" x 13'7"  
Area: 88 sq. ft  
Counted as living area: No

Heated: No  
Finished: No  
Enclosed: Yes  
Contiguous: Yes  
Permitted: Yes  
Wet space: No  
Addition: No  
Conversion: No

**31** Floor 4 - OFFICE/OPTIONAL Bedroom

---



Dimensions: 27'7" x 14'4"  
Area: 374 sq. ft  
Counted as living area: No

Heated: Yes  
Finished: Yes  
Enclosed: Yes  
Contiguous: Yes  
Permitted: Yes  
Wet space: No  
Addition: No  
Conversion: No