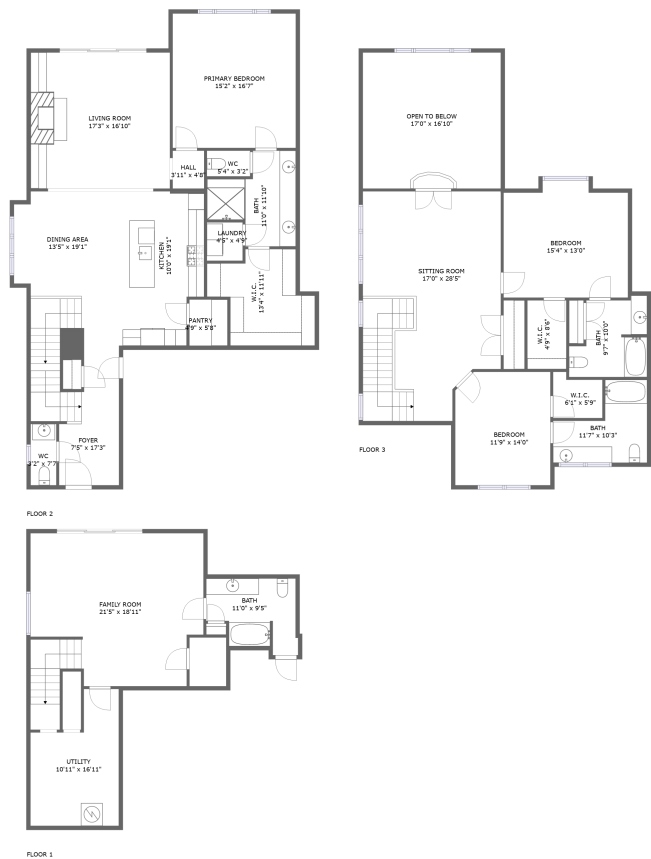


Home report

1446 Leconte Vista Way, Rocky Hill, Knoxville, Knox County, Tennessee, United States, 37919



Total Area: 3149 sq. ft

Below Ground: 538 sq. ft, Floor 2: 1485 sq. ft, Floor 3: 1126 sq. ft
Excluded: Utility 152 sq. ft, Undefined 17 sq. ft, Open to below 287 sq. ft,
Embeddedwindow 10 sq. ft, Walls: 248 sq. ft

Property summary

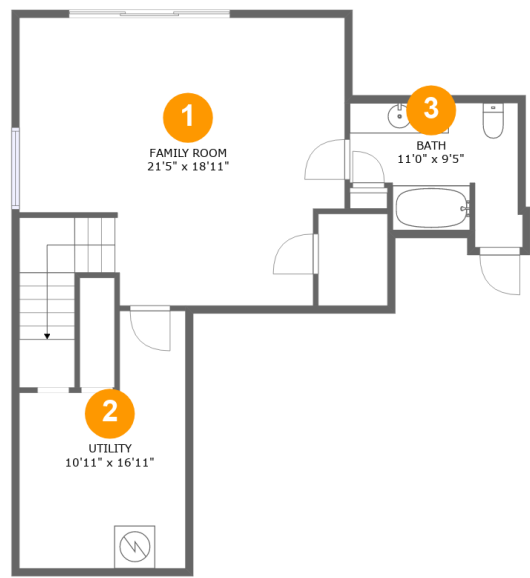
 **3** Floors

 **3** Bedrooms

 **4** Bathrooms

 **1** Half baths

1446 Leconte Vista Way, Rocky Hill, Knoxville, Knox County,
Tennessee, United States, 37919



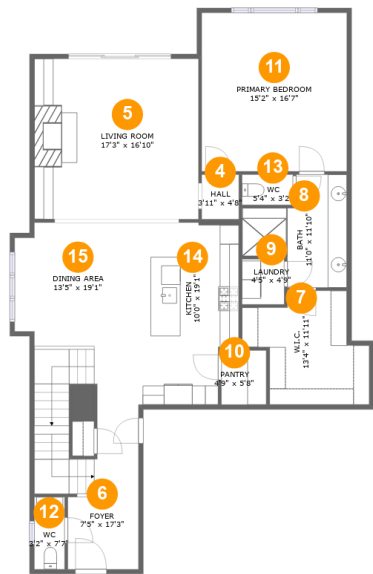
Room dimensions

Floor 1 Below ground Total:538sqft Excluded: 169sqft

#		Max Dimensions	sqft	Included
1	Family Room	21'5" x 18'11"	393 sq. ft	Yes
2	Utility	10'11" x 16'11"	149 sq. ft	No
3	Bath	11'0" x 9'5"	86 sq. ft	Yes

Home report

1446 Leconte Vista Way, Rocky Hill, Knoxville, Knox County,
Tennessee, United States, 37919



Room dimensions

Floor 2 Total:1485sqft Excluded: 0sqft

#		Max Dimensions	sqft	Included
4	Hall	3'11" x 4'8"	18 sq. ft	Yes
5	Living Room	17'3" x 16'10"	290 sq. ft	Yes
6	Foyer	7'5" x 17'3"	99 sq. ft	Yes
7	W.I.C.	13'4" x 11'11"	120 sq. ft	Yes
8	Bath	11'0" x 11'10"	94 sq. ft	Yes
9	Laundry	4'5" x 4'9"	21 sq. ft	Yes
10	Pantry	4'9" x 5'8"	27 sq. ft	Yes
11	Primary Bedroom	15'2" x 16'7"	253 sq. ft	Yes
12	WC	3'2" x 7'7"	24 sq. ft	Yes
13	WC	5'4" x 3'2"	17 sq. ft	Yes
14	Kitchen	10'0" x 19'1"	179 sq. ft	Yes

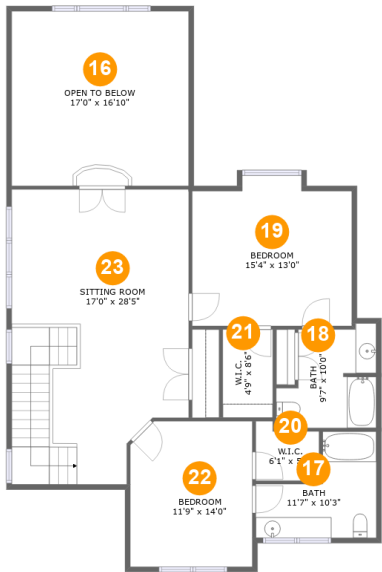
Home report

1446 Leconte Vista Way, Rocky Hill, Knoxville, Knox County,
Tennessee, United States, 37919

#		Max Dimensions	sqft	Included
15	Dining Area	13'5" x 19'1"	275 sq. ft	Yes

Home report

1446 Leconte Vista Way, Rocky Hill, Knoxville, Knox County,
Tennessee, United States, 37919



Room dimensions

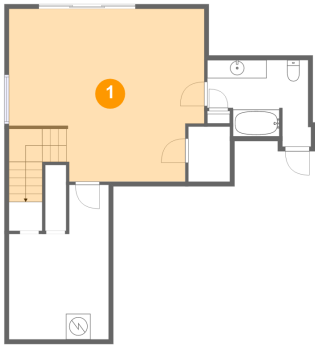
Floor 3

Total:1126sqft Excluded: 297sqft

#		Max Dimensions	sqft	Included
16	Open To Below	17'0" x 16'10"	287 sq. ft	No
17	Bath	11'7" x 10'3"	86 sq. ft	Yes
18	Bath	9'7" x 10'0"	81 sq. ft	Yes
19	Bedroom	15'4" x 13'0"	200 sq. ft	Yes
20	W.I.C.	6'1" x 5'9"	31 sq. ft	Yes
21	W.I.C.	4'9" x 8'6"	41 sq. ft	Yes
22	Bedroom	11'9" x 14'0"	162 sq. ft	Yes
23	Sitting Room	17'0" x 28'5"	450 sq. ft	Yes

1446 Leconte Vista Way, Rocky Hill, Knoxville, Knox County,
Tennessee, United States, 37919

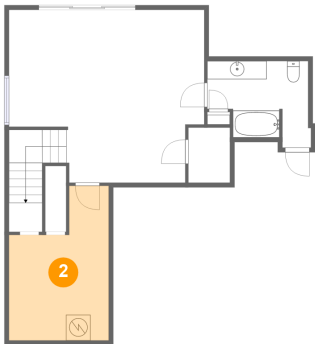
1 Floor 1 - Family Room



Max Dimensions: 21'5" x 18'11"
Calculated Area: 393 sq. ft
Included: Yes

Heated: Yes
Finished: Yes
Enclosed: Yes
Contiguous: Yes
Permitted: Yes
Wet space: No
Addition: No
Conversion: No

2 Floor 1 - Utility

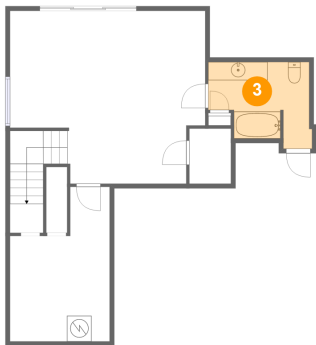


Max Dimensions: 10'11" x 16'11"
Calculated Area: 149 sq. ft
Included: No

Heated: Yes
Finished: No
Enclosed: Yes
Contiguous: Yes
Permitted: Yes
Wet space: No
Addition: No
Conversion: No

1446 Leconte Vista Way, Rocky Hill, Knoxville, Knox County,
Tennessee, United States, 37919

3 Floor 1 - Bath



Max Dimensions: 11'0" x 9'5"
Calculated Area: 86 sq. ft
Included: Yes

Heated: Yes
Finished: Yes
Enclosed: Yes
Contiguous: Yes
Permitted: Yes
Wet space: Yes
Addition: No
Conversion: No

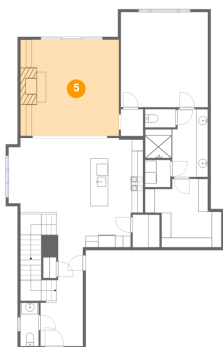
4 Floor 2 - Hall



Max Dimensions: 3'11" x 4'8"
Calculated Area: 18 sq. ft
Included: Yes

Heated: Yes
Finished: Yes
Enclosed: Yes
Contiguous: Yes
Permitted: Yes
Wet space: No
Addition: No
Conversion: No

5 Floor 2 - Living Room



Max Dimensions: 17'3" x 16'10"
Calculated Area: 290 sq. ft
Included: Yes

Heated: Yes
Finished: Yes
Enclosed: Yes
Contiguous: Yes
Permitted: Yes
Wet space: No
Addition: No
Conversion: No

1446 Leconte Vista Way, Rocky Hill, Knoxville, Knox County,
Tennessee, United States, 37919

6 Floor 2 - Foyer



Max Dimensions: 7'5" x 17'3"
Calculated Area: 99 sq. ft
Included: Yes

Heated: Yes
Finished: Yes
Enclosed: Yes
Contiguous: Yes
Permitted: Yes
Wet space: No
Addition: No
Conversion: No

7 Floor 2 - W.I.C.



Max Dimensions: 13'4" x 11'11"
Calculated Area: 120 sq. ft
Included: Yes

Heated: Yes
Finished: Yes
Enclosed: Yes
Contiguous: Yes
Permitted: Yes
Wet space: No
Addition: No
Conversion: No

8 Floor 2 - Bath

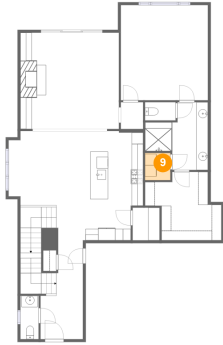


Max Dimensions: 11'0" x 11'10"
Calculated Area: 94 sq. ft
Included: Yes

Heated: Yes
Finished: Yes
Enclosed: Yes
Contiguous: Yes
Permitted: Yes
Wet space: Yes
Addition: No
Conversion: No

1446 Leconte Vista Way, Rocky Hill, Knoxville, Knox County,
Tennessee, United States, 37919

9 Floor 2 - Laundry



Max Dimensions: 4'5" x 4'9"
Calculated Area: 21 sq. ft
Included: Yes

Heated: Yes
Finished: Yes
Enclosed: Yes
Contiguous: Yes
Permitted: Yes
Wet space: No
Addition: No
Conversion: No

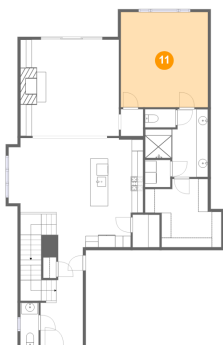
10 Floor 2 - Pantry



Max Dimensions: 4'9" x 5'8"
Calculated Area: 27 sq. ft
Included: Yes

Heated: Yes
Finished: Yes
Enclosed: Yes
Contiguous: Yes
Permitted: Yes
Wet space: No
Addition: No
Conversion: No

11 Floor 2 - Primary Bedroom



Max Dimensions: 15'2" x
16'7"
Calculated Area: 253 sq. ft
Included: Yes

Heated: Yes
Finished: Yes
Enclosed: Yes
Contiguous:
Yes
Permitted: Yes
Wet space: No
Addition: No
Conversion: No

1446 Leconte Vista Way, Rocky Hill, Knoxville, Knox County,
Tennessee, United States, 37919

12 Floor 2 - WC



Max Dimensions: 3'2" x 7'7"
Calculated Area: 24 sq. ft
Included: Yes

Heated: Yes
Finished: Yes
Enclosed: Yes
Contiguous: Yes
Permitted: Yes
Wet space: Yes
Addition: No
Conversion: No

13 Floor 2 - WC



Max Dimensions: 5'4" x 3'2"
Calculated Area: 17 sq. ft
Included: Yes

Heated: Yes
Finished: Yes
Enclosed: Yes
Contiguous: Yes
Permitted: Yes
Wet space: Yes
Addition: No
Conversion: No

14 Floor 2 - Kitchen

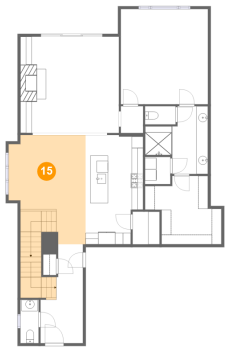


Max Dimensions: 10'0" x 19'1"
Calculated Area: 179 sq. ft
Included: Yes

Heated: Yes
Finished: Yes
Enclosed: Yes
Contiguous: Yes
Permitted: Yes
Wet space: No
Addition: No
Conversion: No

1446 Leconte Vista Way, Rocky Hill, Knoxville, Knox County,
Tennessee, United States, 37919

15 Floor 2 - Dining Area



Max Dimensions: 13'5" x 19'1"
Calculated Area: 275 sq. ft
Included: Yes

Heated: Yes
Finished: Yes
Enclosed: Yes
Contiguous: Yes
Permitted: Yes
Wet space: No
Addition: No
Conversion: No

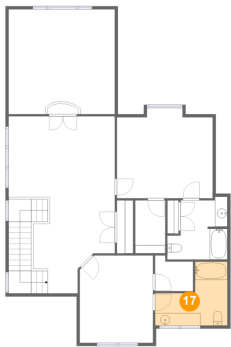
16 Floor 3 - Open To Below



Max Dimensions: 17'0" x 16'10"
Calculated Area: 287 sq. ft
Included: No

Heated: No
Finished: No
Enclosed: No
Contiguous: Yes
Permitted: No
Wet space: No
Addition: No
Conversion: No

17 Floor 3 - Bath

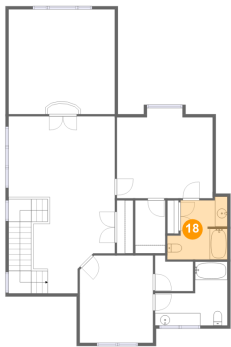


Max Dimensions: 11'7" x 10'3"
Calculated Area: 86 sq. ft
Included: Yes

Heated: Yes
Finished: Yes
Enclosed: Yes
Contiguous: Yes
Permitted: Yes
Wet space: Yes
Addition: No
Conversion: No

1446 Leconte Vista Way, Rocky Hill, Knoxville, Knox County,
Tennessee, United States, 37919

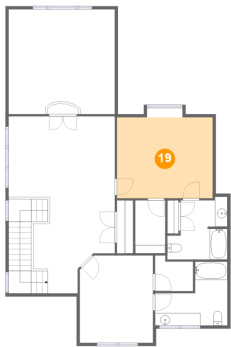
18 Floor 3 - Bath



Max Dimensions: 9'7" x 10'0"
Calculated Area: 81 sq. ft
Included: Yes

Heated: Yes
Finished: Yes
Enclosed: Yes
Contiguous: Yes
Permitted: Yes
Wet space: Yes
Addition: No
Conversion: No

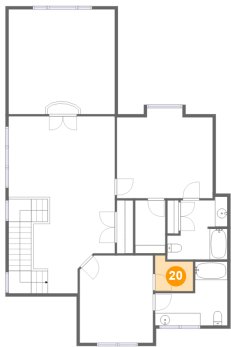
19 Floor 3 - Bedroom



Max Dimensions: 15'4" x 13'0"
Calculated Area: 200 sq. ft
Included: Yes

Heated: Yes
Finished: Yes
Enclosed: Yes
Contiguous: Yes
Permitted: Yes
Wet space: No
Addition: No
Conversion: No

20 Floor 3 - W.I.C.

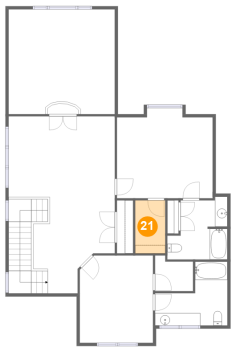


Max Dimensions: 6'1" x 5'9"
Calculated Area: 31 sq. ft
Included: Yes

Heated: Yes
Finished: Yes
Enclosed: Yes
Contiguous: Yes
Permitted: Yes
Wet space: No
Addition: No
Conversion: No

1446 Leconte Vista Way, Rocky Hill, Knoxville, Knox County,
Tennessee, United States, 37919

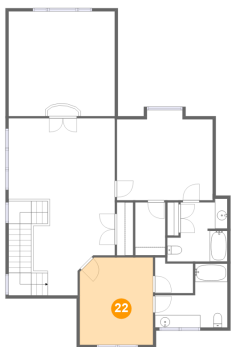
21 Floor 3 - W.I.C.



Max Dimensions: 4'9" x 8'6"
Calculated Area: 41 sq. ft
Included: Yes

Heated: Yes
Finished: Yes
Enclosed: Yes
Contiguous: Yes
Permitted: Yes
Wet space: No
Addition: No
Conversion: No

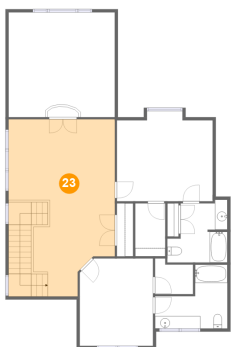
22 Floor 3 - Bedroom



Max Dimensions: 11'9" x 14'0"
Calculated Area: 162 sq. ft
Included: Yes

Heated: Yes
Finished: Yes
Enclosed: Yes
Contiguous: Yes
Permitted: Yes
Wet space: No
Addition: No
Conversion: No

23 Floor 3 - Sitting Room



Max Dimensions: 17'0" x 28'5"
Calculated Area: 450 sq. ft
Included: Yes

Heated: Yes
Finished: Yes
Enclosed: Yes
Contiguous: Yes
Permitted: Yes
Wet space: No
Addition: No
Conversion: No