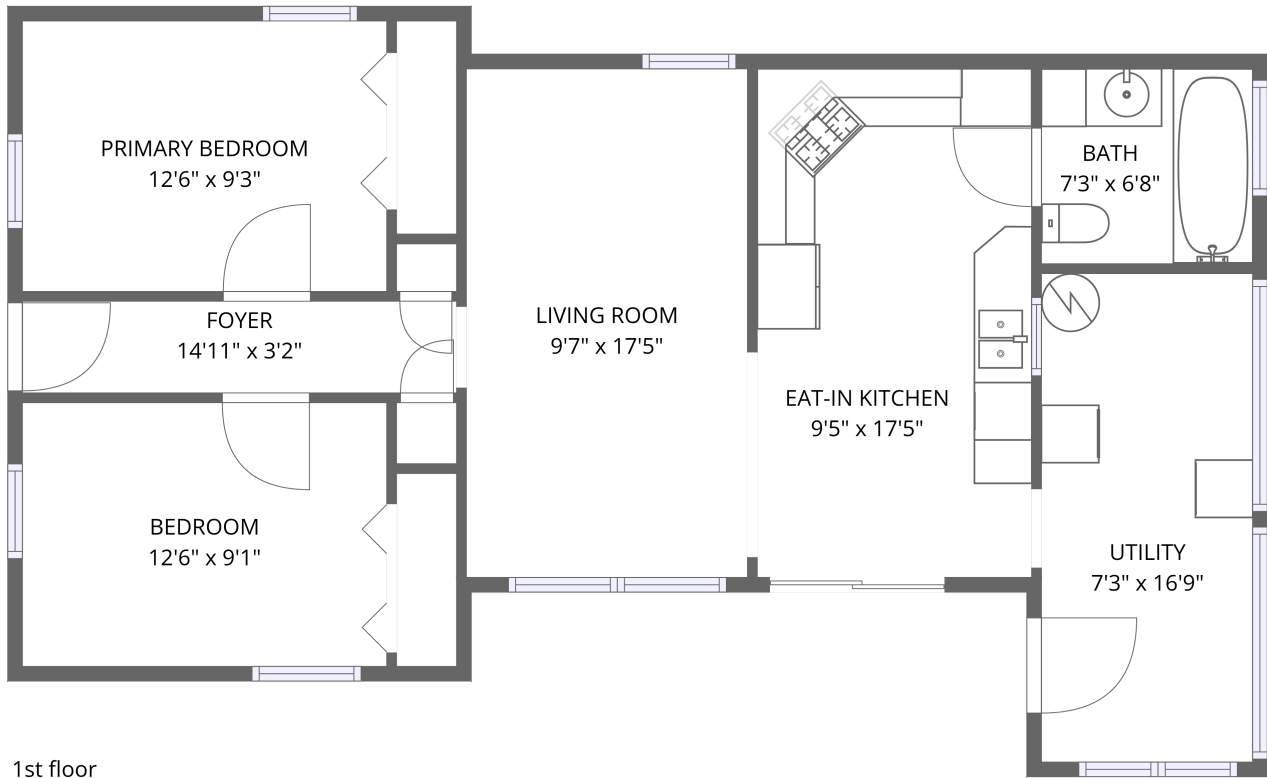


Home data report

34 Elm Avenue, Holbrook, Norfolk County, Massachusetts,
United States, 02343



1st floor

Total Area: 852 sq. ft

1st Floor: 852 sq. ft

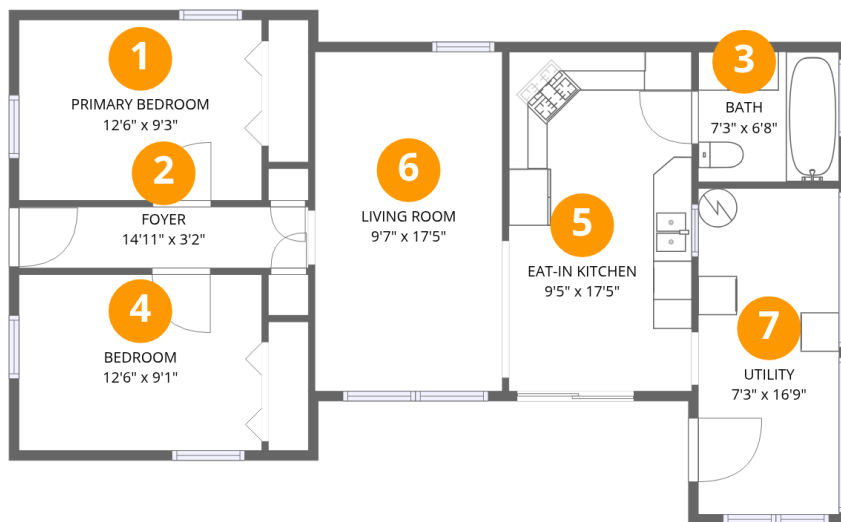
Excluded: Walls: 71 sq. ft

Property summary



Home data report

34 Elm Avenue, Holbrook, Norfolk County, Massachusetts, United States, 02343



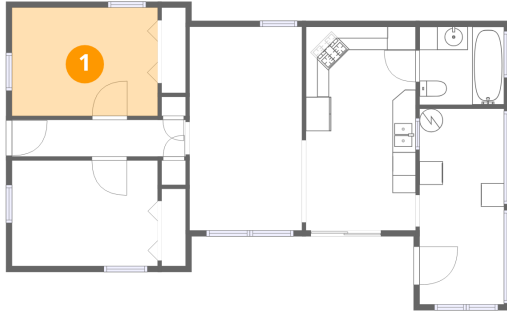
Room dimensions

Floor 1

Total:852sqft Excluded: 0sqft

#		Dimensions	sqft	Counted as living area
1	Primary Bedroom	12'6" x 9'3"	115 sq. ft	Yes
2	Foyer	14'11" x 3'2"	47 sq. ft	Yes
3	Bath	7'3" x 6'8"	48 sq. ft	Yes
4	Bedroom	12'6" x 9'1"	113 sq. ft	Yes
5	Eat-in Kitchen	9'5" x 17'5"	164 sq. ft	Yes
6	Living Room	9'7" x 17'5"	167 sq. ft	Yes
7	Utility	7'3" x 16'9"	121 sq. ft	Yes

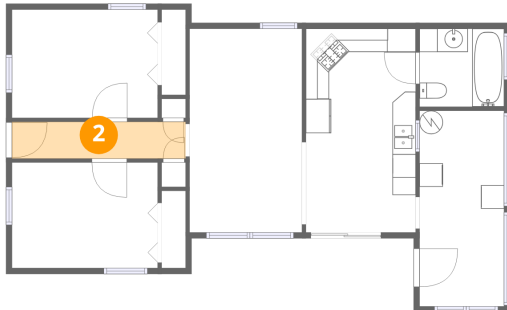
1 Floor 1 - Primary Bedroom



Dimensions: 12'6" x 9'3"
Area: 115 sq. ft
Counted as living area: Yes

Heated: Yes
Finished: Yes
Enclosed: Yes
Contiguous: Yes
Permitted: Yes
Wet space: No
Addition: No
Conversion: No

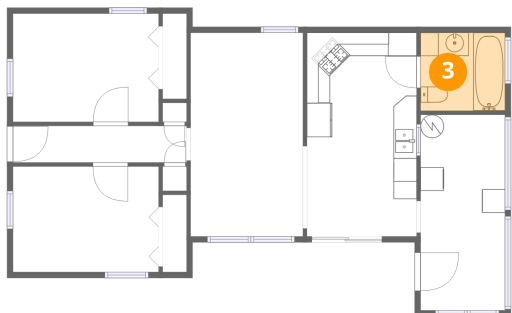
2 Floor 1 - Foyer



Dimensions: 14'11" x 3'2"
Area: 47 sq. ft
Counted as living area: Yes

Heated: Yes
Finished: Yes
Enclosed: Yes
Contiguous: Yes
Permitted: Yes
Wet space: No
Addition: No
Conversion: No

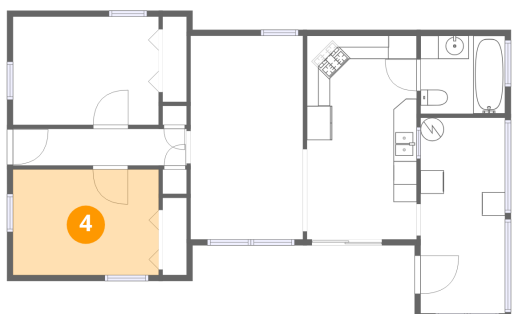
3 Floor 1 - Bath



Dimensions: 7'3" x 6'8"
Area: 48 sq. ft
Counted as living area: Yes

Heated: Yes
Finished: Yes
Enclosed: Yes
Contiguous: Yes
Permitted: Yes
Wet space: Yes
Addition: No
Conversion: No

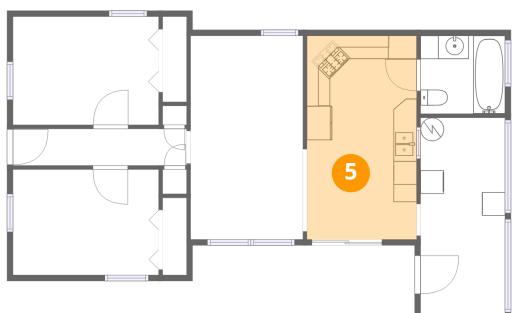
4 Floor 1 - Bedroom



Dimensions: 12'6" x 9'1"
Area: 113 sq. ft
Counted as living area: Yes

Heated: Yes
Finished: Yes
Enclosed: Yes
Contiguous: Yes
Permitted: Yes
Wet space: No
Addition: No
Conversion: No

5 Floor 1 - Eat-in Kitchen

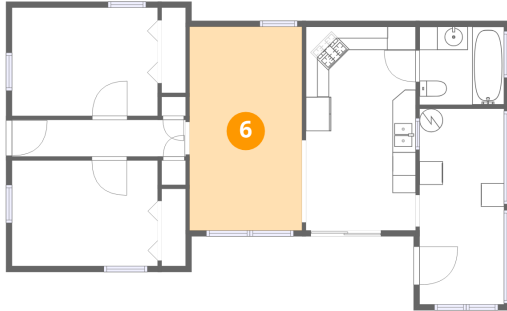


Dimensions: 9'5" x 17'5"
Area: 164 sq. ft
Counted as living area: Yes

Heated: Yes
Finished: Yes
Enclosed: Yes
Contiguous: Yes
Permitted: Yes
Wet space: No
Addition: No
Conversion: No

34 Elm Avenue, Holbrook, Norfolk County, Massachusetts,
United States, 02343

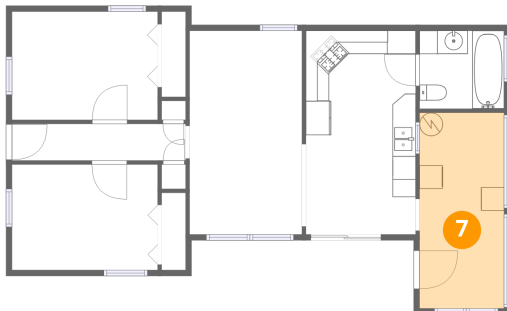
6 Floor 1 - Living Room



Dimensions: 9'7" x 17'5"
Area: 167 sq. ft
Counted as living area: Yes

Heated: Yes
Finished: Yes
Enclosed: Yes
Contiguous: Yes
Permitted: Yes
Wet space: No
Addition: No
Conversion: No

7 Floor 1 - Utility



Dimensions: 7'3" x 16'9"
Area: 121 sq. ft
Counted as living area: Yes

Heated: Yes
Finished: Yes
Enclosed: Yes
Contiguous: Yes
Permitted: Yes
Wet space: No
Addition: No
Conversion: No