

Total Area: 1250 sq. ft

1st Floor: 1250 sq. ft

Excluded: Porch 230 sq. ft, Covered deck 510 sq. ft, Deck 197 sq. ft, Fireplace 14 sq. ft, Walls: 71 sq. ft

Property summary



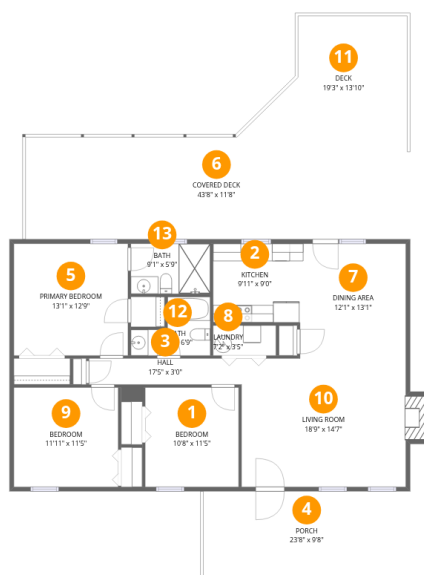
1 Floors



3 Bedrooms



2 Bathrooms



Room dimensions

Floor 1

Total:1250sqft Excluded: 951sqft

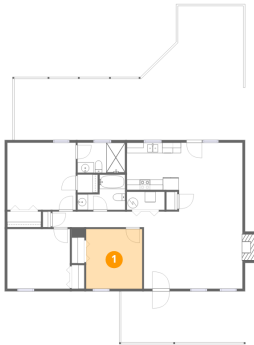
#		Dimensions	sqft	Counted as living area
1	Bedroom	10'8" x 11'5"	122 sq. ft	Yes
2	Kitchen	9'11" x 9'0"	90 sq. ft	Yes
3	Hall	17'5" x 3'0"	52 sq. ft	Yes
4	Porch	23'8" x 9'8"	230 sq. ft	No
5	Primary Bedroom	13'1" x 12'9"	167 sq. ft	Yes
6	Covered Deck	43'8" x 11'8"	510 sq. ft	No
7	Dining Area	12'1" x 13'1"	159 sq. ft	Yes
8	Laundry	7'2" x 3'5"	25 sq. ft	Yes
9	Bedroom	11'11" x 11'5"	136 sq. ft	Yes
10	Living Room	18'9" x 14'7"	288 sq. ft	Yes
11	Deck	19'3" x 13'10"	197 sq. ft	No

Home data report

1222 Misty Ridge Lane, Montvale, Virginia 24122, United States

#		Dimensions	sqft	Counted as living area
12	Bath	9'1" x 6'9"	45 sq. ft	Yes
13	Bath	9'1" x 5'9"	52 sq. ft	Yes

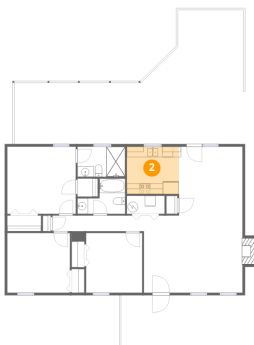
1 Floor 1 - Bedroom



Dimensions: 10'8" x 11'5"
Area: 122 sq. ft
Counted as living area: Yes

Heated: Yes
Finished: Yes
Enclosed: Yes
Contiguous: Yes
Permitted: Yes
Wet space: No
Addition: No
Conversion: No

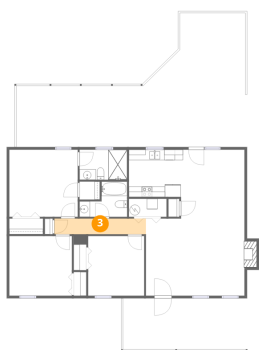
2 Floor 1 - Kitchen



Dimensions: 9'11" x 9'0"
Area: 90 sq. ft
Counted as living area: Yes

Heated: Yes
Finished: Yes
Enclosed: Yes
Contiguous: Yes
Permitted: Yes
Wet space: No
Addition: No
Conversion: No

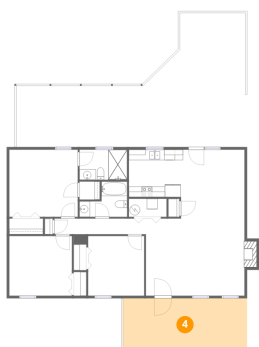
3 Floor 1 - Hall



Dimensions: 17'5" x 3'0"
Area: 52 sq. ft
Counted as living area: Yes

Heated: Yes
Finished: Yes
Enclosed: Yes
Contiguous: Yes
Permitted: Yes
Wet space: No
Addition: No
Conversion: No

4 Floor 1 - Porch



Dimensions: 23'8" x 9'8"
Area: 230 sq. ft
Counted as living area: No

Heated: No
Finished: No
Enclosed: No
Contiguous: Yes
Permitted: Yes
Wet space: No
Addition: No
Conversion: No

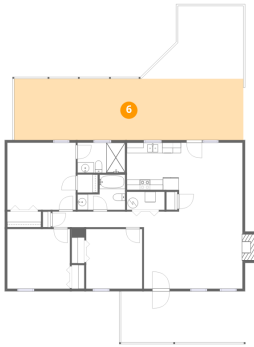
5 Floor 1 - Primary Bedroom



Dimensions: 13'1" x 12'9"
Area: 167 sq. ft
Counted as living area: Yes

Heated: Yes
Finished: Yes
Enclosed: Yes
Contiguous: Yes
Permitted: Yes
Wet space: No
Addition: No
Conversion: No

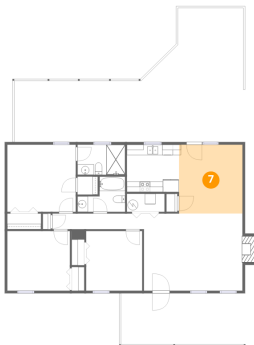
6 Floor 1 - Covered Deck



Dimensions: 43'8" x 11'8"
Area: 510 sq. ft
Counted as living area: No

Heated: No
Finished: No
Enclosed: No
Contiguous: Yes
Permitted: Yes
Wet space: No
Addition: No
Conversion: No

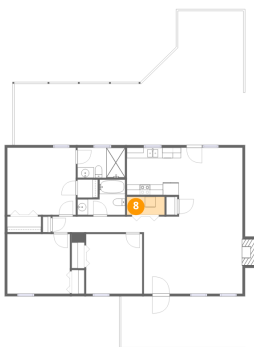
7 Floor 1 - Dining Area



Dimensions: 12'1" x 13'1"
Area: 159 sq. ft
Counted as living area: Yes

Heated: Yes
Finished: Yes
Enclosed: Yes
Contiguous: Yes
Permitted: Yes
Wet space: No
Addition: No
Conversion: No

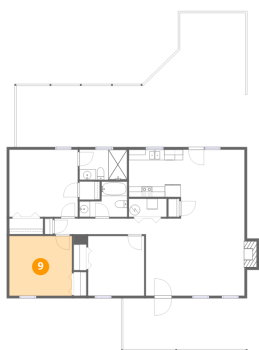
8 Floor 1 - Laundry



Dimensions: 7'2" x 3'5"
Area: 25 sq. ft
Counted as living area: Yes

Heated: Yes
Finished: Yes
Enclosed: Yes
Contiguous: Yes
Permitted: Yes
Wet space: No
Addition: No
Conversion: No

9 Floor 1 - Bedroom



Dimensions: 11'11" x 11'5"
Area: 136 sq. ft
Counted as living area: Yes

Heated: Yes
Finished: Yes
Enclosed: Yes
Contiguous: Yes
Permitted: Yes
Wet space: No
Addition: No
Conversion: No

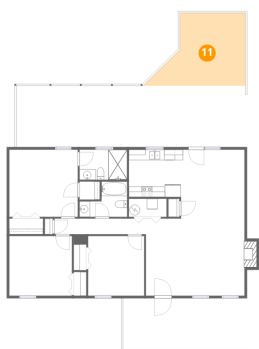
10 Floor 1 - Living Room



Dimensions: 18'9" x 14'7"
Area: 288 sq. ft
Counted as living area: Yes

Heated: Yes
Finished: Yes
Enclosed: Yes
Contiguous: Yes
Permitted: Yes
Wet space: No
Addition: No
Conversion: No

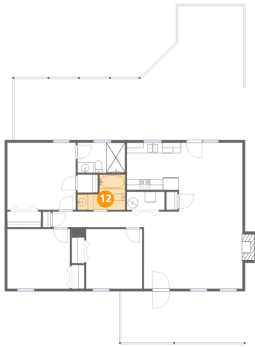
11 Floor 1 - Deck



Dimensions: 19'3" x 13'10"
Area: 197 sq. ft
Counted as living area: No

Heated: No
Finished: No
Enclosed: No
Contiguous: Yes
Permitted: Yes
Wet space: No
Addition: No
Conversion: No

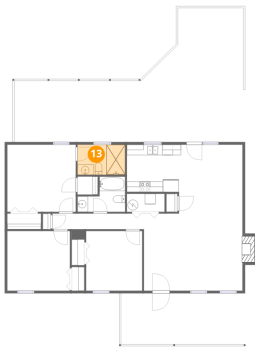
12 Floor 1 - Bath



Dimensions: 9'1" x 6'9"
Area: 45 sq. ft
Counted as living area: Yes

Heated: Yes
Finished: Yes
Enclosed: Yes
Contiguous: Yes
Permitted: Yes
Wet space: Yes
Addition: No
Conversion: No

13 Floor 1 - Bath



Dimensions: 9'1" x 5'9"
Area: 52 sq. ft
Counted as living area: Yes

Heated: Yes
Finished: Yes
Enclosed: Yes
Contiguous: Yes
Permitted: Yes
Wet space: Yes
Addition: No
Conversion: No