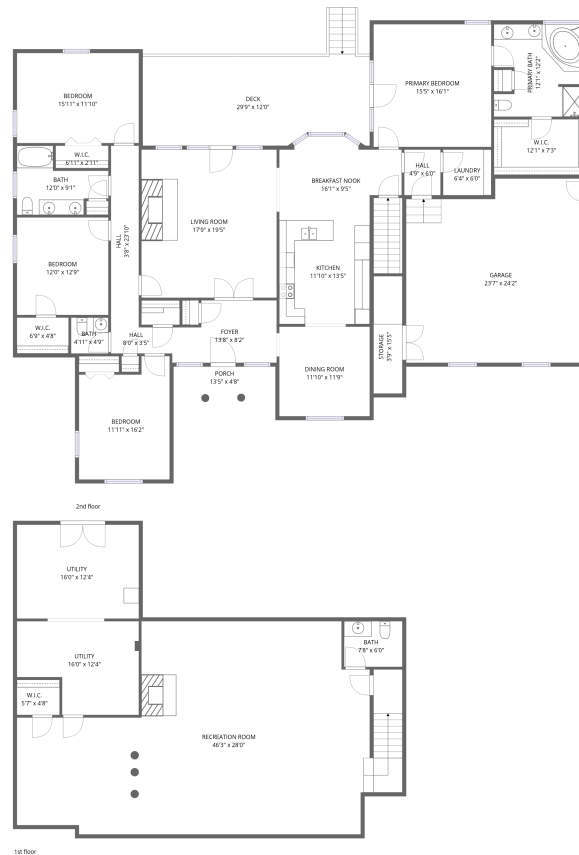


Home data report

139 Morning Dove Lane, Statesville, North Carolina, United States



Total Area: 3822 sq. ft

1st Floor: 1275 sq. ft, 2nd Floor: 2547 sq. ft

Excluded: Utility 395 sq. ft, Porch 62 sq. ft, Deck 357 sq. ft, Storage 68 sq. ft, Garage 563 sq. ft, Embedded window 13 sq. ft

Property summary



2 Floors



4 Bedrooms




2 Bathrooms

Scan captured on Wed, 06 May 2026 16:18:46 GMT

*Measurements are performed in accordance with ANSI Z765 standards where applicable. Measurements are provided for marketing purposes only and should not be relied upon for legal, lending, or appraisal use. All measurements are deemed reliable but not guaranteed.

Home data report

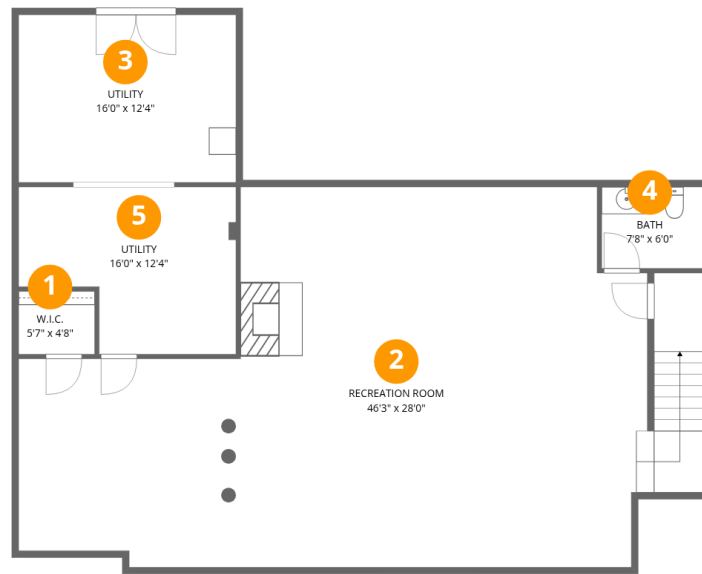
139 Morning Dove Lane, Statesville, North Carolina, United States

 **2**
Half baths

 **1**
Garages

Scan captured on Wed, 06 May 2026 16:18:46 GMT

*Measurements are performed in accordance with ANSI Z765 standards where applicable. Measurements are provided for marketing purposes only and should not be relied upon for legal, lending, or appraisal use. All measurements are deemed reliable but not guaranteed.



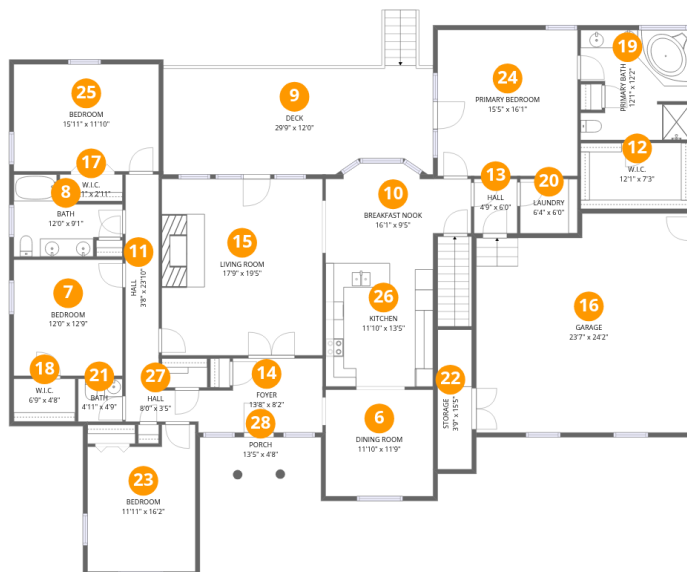
Room dimensions

Floor 1

Total: 1275 sqft

Excluded: 395 sqft

#		Dimensions	sqft	Counted as living area
1	W.I.C.	5'7" x 4'8"	26 sq. ft	Yes
2	Recreation Room	46'3" x 28'0"	1090 sq. ft	Yes
3	Utility	16'0" x 12'4"	197 sq. ft	No
4	Bath	7'8" x 6'0"	46 sq. ft	Yes
5	Utility	16'0" x 12'4"	167 sq. ft	No



Room dimensions

Floor 2

Total: 2547 sqft

Excluded: 1063 sqft

#		Dimensions	sqft	Counted as living area
6	Dining Room	11'10" x 11'9"	140 sq. ft	Yes
7	Bedroom	12'0" x 12'9"	154 sq. ft	Yes
8	Bath	12'0" x 9'1"	78 sq. ft	Yes
9	Deck	29'9" x 12'0"	370 sq. ft	No
10	Breakfast Nook	16'1" x 9'5"	138 sq. ft	Yes
11	Hall	3'8" x 23'10"	87 sq. ft	Yes
12	W.I.C.	12'1" x 7'3"	88 sq. ft	Yes
13	Hall	4'9" x 6'0"	29 sq. ft	Yes
14	Foyer	13'8" x 8'2"	99 sq. ft	Yes
15	Living Room	17'9" x 19'5"	345 sq. ft	Yes
16	Garage	23'7" x 24'2"	539 sq. ft	No

Scan captured on Wed, 06 May 2026 16:18:46 GMT

*Measurements are performed in accordance with ANSI Z765 standards where applicable. Measurements are provided for marketing purposes only and should not be relied upon for legal, lending, or appraisal use. All measurements are deemed reliable but not guaranteed.

Home data report

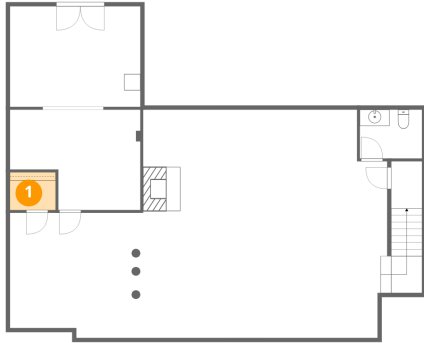
139 Morning Dove Lane, Statesville, North Carolina, United States

#		Dimensions	sqft	Counted as living area
17	W.I.C.	6'11" x 2'11"	20 sq. ft	Yes
18	W.I.C.	6'9" x 4'8"	32 sq. ft	Yes
19	Primary Bath	12'1" x 12'2"	136 sq. ft	Yes
20	Laundry	6'4" x 6'0"	38 sq. ft	Yes
21	Bath	4'11" x 4'9"	23 sq. ft	Yes
22	Storage	3'9" x 15'5"	58 sq. ft	No
23	Bedroom	11'11" x 16'2"	173 sq. ft	Yes
24	Primary Bedroom	15'5" x 16'1"	249 sq. ft	Yes
25	Bedroom	15'11" x 11'10"	189 sq. ft	Yes
26	Kitchen	11'10" x 13'5"	159 sq. ft	Yes
27	Hall	8'0" x 3'5"	28 sq. ft	Yes
28	Porch	13'5" x 4'8"	62 sq. ft	No

Scan captured on Wed, 06 May 2026 16:18:46 GMT

*Measurements are performed in accordance with ANSI Z765 standards where applicable. Measurements are provided for marketing purposes only and should not be relied upon for legal, lending, or appraisal use. All measurements are deemed reliable but not guaranteed.

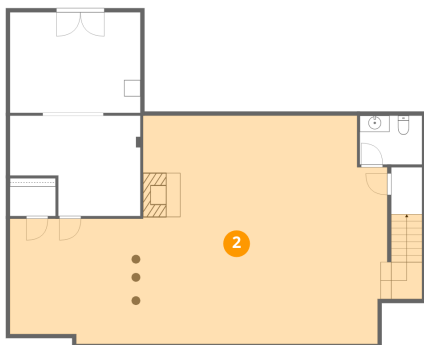
1 Floor 1 - W.I.C.



Dimensions: 5'7" x 4'8"
Area: 26 sq. ft
Counted as living area: Yes

Heated: Yes
Finished: Yes
Enclosed: Yes
Contiguous: Yes
Permitted: Yes
Wet space: No
Addition: No
Conversion: No

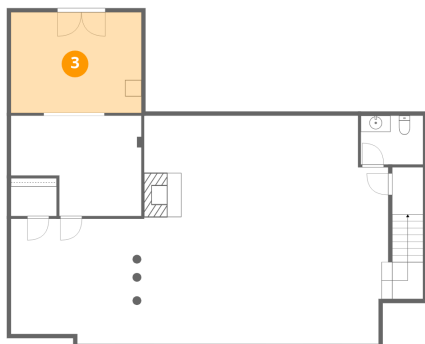
2 Floor 1 - Recreation Room



Dimensions: 46'3" x 28'0"
Area: 1090 sq. ft
Counted as living area: Yes

Heated: Yes
Finished: Yes
Enclosed: Yes
Contiguous: Yes
Permitted: Yes
Wet space: No
Addition: No
Conversion: No

3 Floor 1 - Utility



Dimensions: 16'0" x 12'4"
Area: 197 sq. ft
Counted as living area: No

Heated: No
Finished: No
Enclosed: Yes
Contiguous: Yes
Permitted: Yes
Wet space: No
Addition: No
Conversion: No

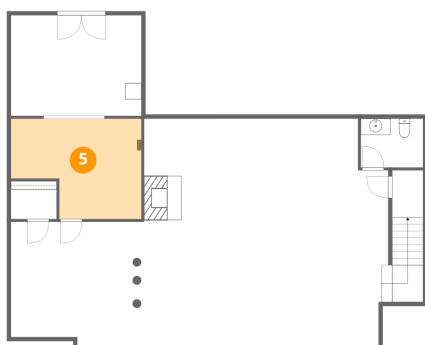
4 Floor 1 - Bath



Dimensions: 7'8" x 6'0"
Area: 46 sq. ft
Counted as living area: Yes

Heated: Yes
Finished: Yes
Enclosed: Yes
Contiguous: Yes
Permitted: Yes
Wet space: Yes
Addition: No
Conversion: No

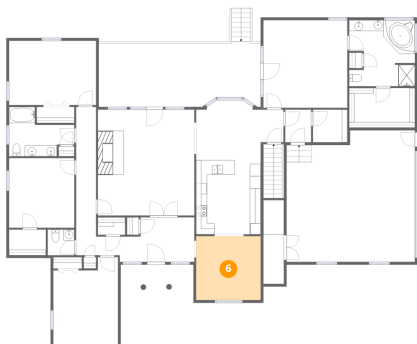
5 Floor 1 - Utility



Dimensions: 16'0" x 12'4"
Area: 167 sq. ft
Counted as living area: No

Heated: Yes
Finished: No
Enclosed: Yes
Contiguous: Yes
Permitted: Yes
Wet space: No
Addition: No
Conversion: No

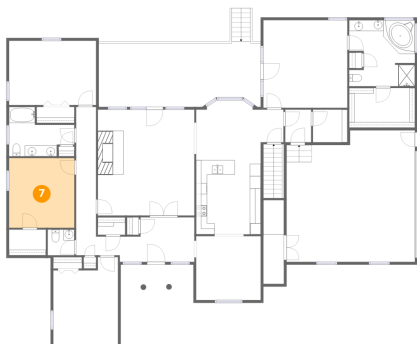
6 Floor 2 - Dining Room



Dimensions: 11'10" x 11'9"
Area: 140 sq. ft
Counted as living area: Yes

Heated: Yes
Finished: Yes
Enclosed: Yes
Contiguous: Yes
Permitted: Yes
Wet space: No
Addition: No
Conversion: No

7 Floor 2 - Bedroom



Dimensions: 12'0" x 12'9"
Area: 154 sq. ft
Counted as living area: Yes

Heated: Yes
Finished: Yes
Enclosed: Yes
Contiguous: Yes
Permitted: Yes
Wet space: No
Addition: No
Conversion: No

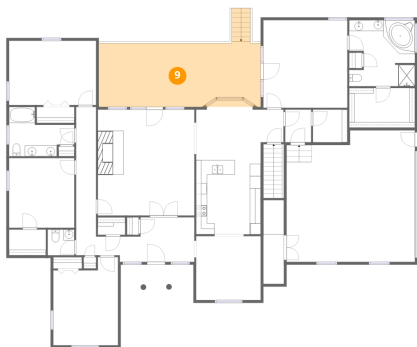
8 Floor 2 - Bath



Dimensions: 12'0" x 9'1"
Area: 78 sq. ft
Counted as living area: Yes

Heated: Yes
Finished: Yes
Enclosed: Yes
Contiguous: Yes
Permitted: Yes
Wet space: Yes
Addition: No
Conversion: No

9 Floor 2 - Deck



Dimensions: 29'9" x 12'0"
Area: 370 sq. ft
Counted as living area: No

Heated: No
Finished: No
Enclosed: No
Contiguous: Yes
Permitted: Yes
Wet space: No
Addition: No
Conversion: No

10 Floor 2 - Breakfast Nook



Dimensions: 16'1" x 9'5"
Area: 138 sq. ft
Counted as living area: Yes

Heated: Yes
Finished: Yes
Enclosed: Yes
Contiguous: Yes
Permitted: Yes
Wet space: No
Addition: No
Conversion: No

11 Floor 2 - Hall



Dimensions: 3'8" x 23'10"
Area: 87 sq. ft
Counted as living area: Yes

Heated: Yes
Finished: Yes
Enclosed: Yes
Contiguous: Yes
Permitted: Yes
Wet space: No
Addition: No
Conversion: No

12 Floor 2 - W.I.C.



Dimensions: 12'1" x 7'3"
Area: 88 sq. ft
Counted as living area: Yes

Heated: Yes
Finished: Yes
Enclosed: Yes
Contiguous: Yes
Permitted: Yes
Wet space: No
Addition: No
Conversion: No

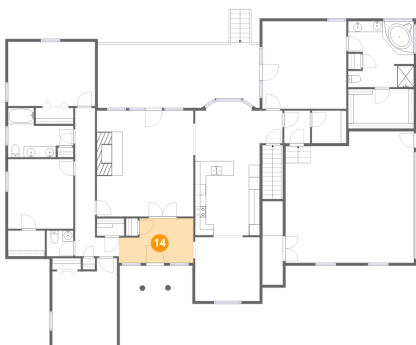
13 Floor 2 - Hall



Dimensions: 4'9" x 6'0"
Area: 29 sq. ft
Counted as living area: Yes

Heated: Yes
Finished: Yes
Enclosed: Yes
Contiguous: Yes
Permitted: Yes
Wet space: No
Addition: No
Conversion: No

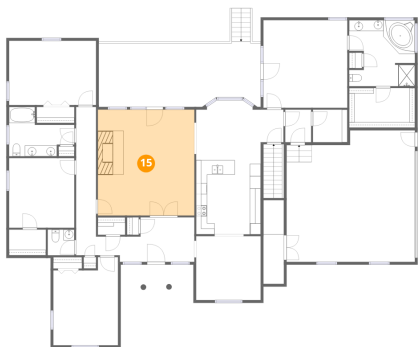
14 Floor 2 - Foyer



Dimensions: 13'8" x 8'2"
Area: 99 sq. ft
Counted as living area: Yes

Heated: Yes
Finished: Yes
Enclosed: Yes
Contiguous: Yes
Permitted: Yes
Wet space: No
Addition: No
Conversion: No

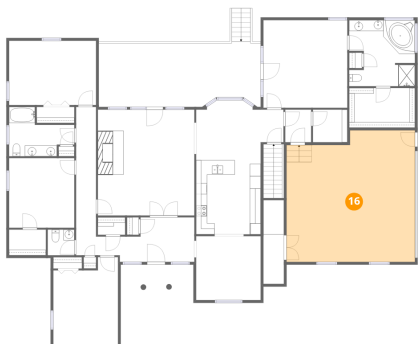
15 Floor 2 - Living Room



Dimensions: 17'9" x 19'5"
Area: 345 sq. ft
Counted as living area: Yes

Heated: Yes
Finished: Yes
Enclosed: Yes
Contiguous: Yes
Permitted: Yes
Wet space: No
Addition: No
Conversion: No

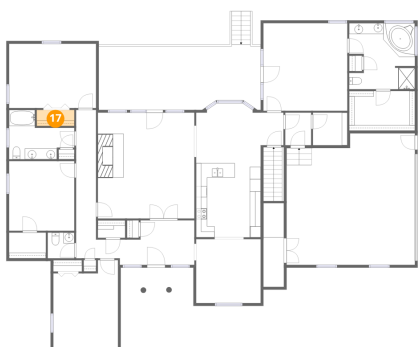
16 Floor 2 - Garage



Dimensions: 23'7" x 24'2"
Area: 539 sq. ft
Counted as living area: No

Heated: No
Finished: No
Enclosed: Yes
Contiguous: Yes
Permitted: Yes
Wet space: No
Addition: No
Conversion: No

17 Floor 2 - W.I.C.



Dimensions: 6'11" x 2'11"
Area: 20 sq. ft
Counted as living area: Yes

Heated: Yes
Finished: Yes
Enclosed: Yes
Contiguous: Yes
Permitted: Yes
Wet space: No
Addition: No
Conversion: No

18 Floor 2 - W.I.C.



Dimensions: 6'9" x 4'8"
Area: 32 sq. ft
Counted as living area: Yes

Heated: Yes
Finished: Yes
Enclosed: Yes
Contiguous: Yes
Permitted: Yes
Wet space: No
Addition: No
Conversion: No

19 Floor 2 - Primary Bath



Dimensions: 12'1" x 12'2"
Area: 136 sq. ft
Counted as living area: Yes

Heated: Yes
Finished: Yes
Enclosed: Yes
Contiguous: Yes
Permitted: Yes
Wet space: Yes
Addition: No
Conversion: No

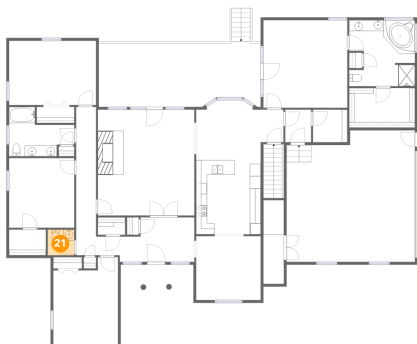
20 Floor 2 - Laundry



Dimensions: 6'4" x 6'0"
Area: 38 sq. ft
Counted as living area: Yes

Heated: Yes
Finished: Yes
Enclosed: Yes
Contiguous: Yes
Permitted: Yes
Wet space: No
Addition: No
Conversion: No

21 Floor 2 - Bath



Dimensions: 4'11" x 4'9"
Area: 23 sq. ft
Counted as living area: Yes

Heated: Yes
Finished: Yes
Enclosed: Yes
Contiguous: Yes
Permitted: Yes
Wet space: Yes
Addition: No
Conversion: No

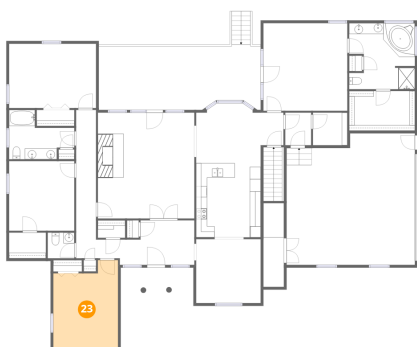
22 Floor 2 - Storage



Dimensions: 3'9" x 15'5"
Area: 58 sq. ft
Counted as living area: No

Heated: No
Finished: No
Enclosed: No
Contiguous: Yes
Permitted: Yes
Wet space: No
Addition: No
Conversion: No

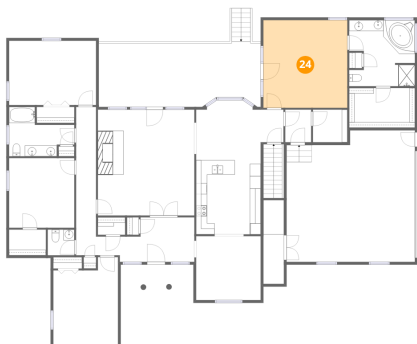
23 Floor 2 - Bedroom



Dimensions: 11'11" x 16'2"
Area: 173 sq. ft
Counted as living area: Yes

Heated: Yes
Finished: Yes
Enclosed: Yes
Contiguous: Yes
Permitted: Yes
Wet space: No
Addition: No
Conversion: No

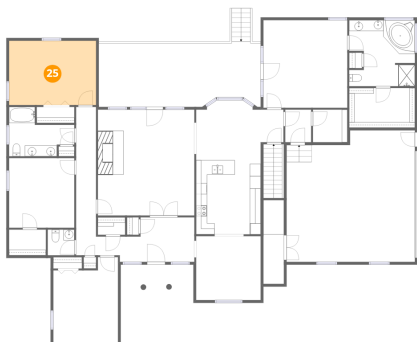
24 Floor 2 - Primary Bedroom



Dimensions: 15'5" x 16'1"
Area: 249 sq. ft
Counted as living area: Yes

Heated: Yes
Finished: Yes
Enclosed: Yes
Contiguous: Yes
Permitted: Yes
Wet space: No
Addition: No
Conversion: No

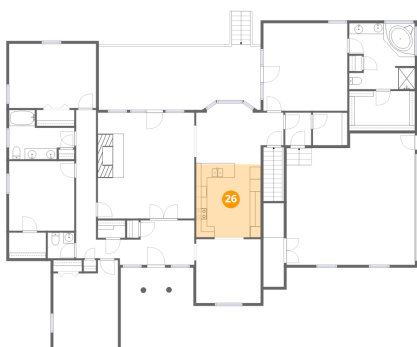
25 Floor 2 - Bedroom



Dimensions: 15'11" x 11'10"
Area: 189 sq. ft
Counted as living area: Yes

Heated: Yes
Finished: Yes
Enclosed: Yes
Contiguous: Yes
Permitted: Yes
Wet space: No
Addition: No
Conversion: No

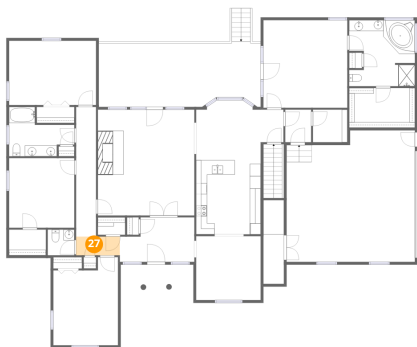
26 Floor 2 - Kitchen



Dimensions: 11'10" x 13'5"
Area: 159 sq. ft
Counted as living area: Yes

Heated: Yes
Finished: Yes
Enclosed: Yes
Contiguous: Yes
Permitted: Yes
Wet space: No
Addition: No
Conversion: No

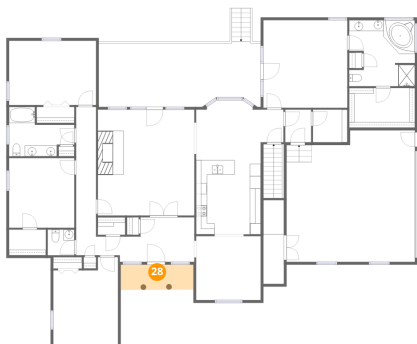
27 Floor 2 - Hall



Dimensions: 8'0" x 3'5"
Area: 28 sq. ft
Counted as living area: Yes

Heated: Yes
Finished: Yes
Enclosed: Yes
Contiguous: Yes
Permitted: Yes
Wet space: No
Addition: No
Conversion: No

28 Floor 2 - Porch



Dimensions: 13'5" x 4'8"
Area: 62 sq. ft
Counted as living area: No

Heated: No
Finished: No
Enclosed: No
Contiguous: Yes
Permitted: Yes
Wet space: No
Addition: No
Conversion: No