

Home data report

4367 Har Paul Circle, Ansley Park, Egypt Lake-Leto, Tampa, Hillsborough County, Florida, United States, 33614




Total Area: 1044 sq. ft

Below Ground: 516 sq. ft, 1st Floor: 528 sq. ft

Excluded: Patio 128 sq. ft, Porch 21 sq. ft, Walls: 68 sq. ft

Property summary

 2 Floors

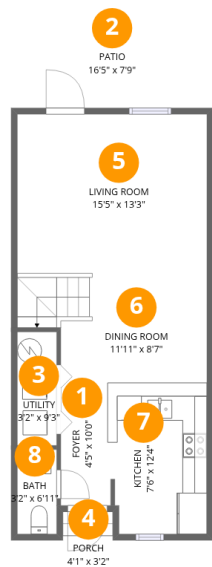
 2 Bedrooms

 1 Bathrooms

 1 Half baths

Home data report

4367 Har Paul Circle, Ansley Park, Egypt Lake-Leto, Tampa, Hillsborough County, Florida, United States, 33614

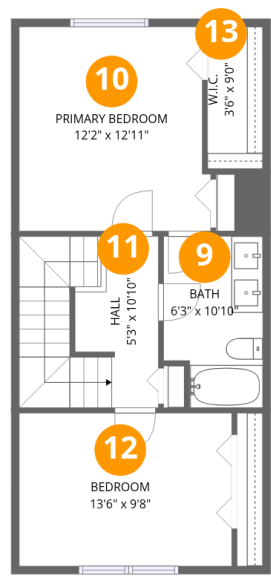


Room dimensions

Floor 1 Below grade Total:516sqft Excluded: 149sqft

#		Dimensions	sqft	Counted as living area
1	Foyer	4'5" x 10'0"	43 sq. ft	Yes
2	Patio	16'5" x 7'9"	128 sq. ft	No
3	Utility	3'2" x 9'3"	30 sq. ft	Yes
4	Porch	4'1" x 3'2"	21 sq. ft	No
5	Living Room	15'5" x 13'3"	205 sq. ft	Yes
6	Dining Room	11'11" x 8'7"	117 sq. ft	Yes
7	Kitchen	7'6" x 12'4"	92 sq. ft	Yes
8	Bath	3'2" x 6'11"	22 sq. ft	Yes

4367 Har Paul Circle, Ansley Park, Egypt Lake-Leto, Tampa,
Hillsborough County, Florida, United States, 33614



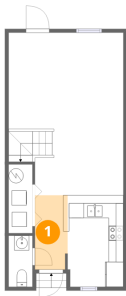
Room dimensions

Floor 2 Total:528sqft Excluded: 0sqft

#		Dimensions	sqft	Counted as living area
9	Bath	6'3" x 10'10"	63 sq. ft	Yes
10	Primary Bedroom	12'2" x 12'11"	152 sq. ft	Yes
11	Hall	5'3" x 10'10"	96 sq. ft	Yes
12	Bedroom	13'6" x 9'8"	131 sq. ft	Yes
13	W.I.C.	3'6" x 9'0"	32 sq. ft	Yes

4367 Har Paul Circle, Ansley Park, Egypt Lake-Leto, Tampa,
Hillsborough County, Florida, United States, 33614

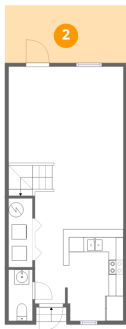
1 Floor 1 - Foyer



Dimensions: 4'5" x 10'0"
Area: 43 sq. ft
Counted as living area: Yes

Heated: Yes
Finished: Yes
Enclosed: Yes
Contiguous: Yes
Permitted: Yes
Wet space: No
Addition: No
Conversion: No

2 Floor 1 - Patio

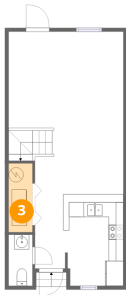


Dimensions: 16'5" x 7'9"
Area: 128 sq. ft
Counted as living area: No

Heated: No
Finished: No
Enclosed: No
Contiguous: Yes
Permitted: Yes
Wet space: No
Addition: No
Conversion: No

4367 Har Paul Circle, Ansley Park, Egypt Lake-Leto, Tampa,
Hillsborough County, Florida, United States, 33614

3 Floor 1 - Utility



Dimensions: 3'2" x 9'3"
Area: 30 sq. ft
Counted as living area: Yes

Heated: Yes
Finished: Yes
Enclosed: Yes
Contiguous: Yes
Permitted: Yes
Wet space: No
Addition: No
Conversion: No

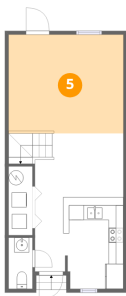
4 Floor 1 - Porch



Dimensions: 4'1" x 3'2"
Area: 21 sq. ft
Counted as living area: No

Heated: No
Finished: No
Enclosed: No
Contiguous: Yes
Permitted: Yes
Wet space: No
Addition: No
Conversion: No

5 Floor 1 - Living Room



Dimensions: 15'5" x 13'3"
Area: 205 sq. ft
Counted as living area: Yes

Heated: Yes
Finished: Yes
Enclosed: Yes
Contiguous: Yes
Permitted: Yes
Wet space: No
Addition: No
Conversion: No

4367 Har Paul Circle, Ansley Park, Egypt Lake-Leto, Tampa,
Hillsborough County, Florida, United States, 33614

6 Floor 1 - Dining Room



Dimensions: 11'11" x 8'7"
Area: 117 sq. ft
Counted as living area: Yes

Heated: Yes
Finished: Yes
Enclosed: Yes
Contiguous: Yes
Permitted: Yes
Wet space: No
Addition: No
Conversion: No

7 Floor 1 - Kitchen



Dimensions: 7'6" x 12'4"
Area: 92 sq. ft
Counted as living area: Yes

Heated: Yes
Finished: Yes
Enclosed: Yes
Contiguous: Yes
Permitted: Yes
Wet space: No
Addition: No
Conversion: No

8 Floor 1 - Bath



Dimensions: 3'2" x 6'11"
Area: 22 sq. ft
Counted as living area: Yes

Heated: Yes
Finished: Yes
Enclosed: Yes
Contiguous: Yes
Permitted: Yes
Wet space: Yes
Addition: No
Conversion: No

4367 Har Paul Circle, Ansley Park, Egypt Lake-Leto, Tampa, Hillsborough County, Florida, United States, 33614

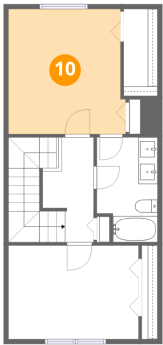
9 Floor 2 - Bath



Dimensions: 6'3" x 10'10"
Area: 63 sq. ft
Counted as living area: Yes

Heated: Yes
Finished: Yes
Enclosed: Yes
Contiguous: Yes
Permitted: Yes
Wet space: Yes
Addition: No
Conversion: No

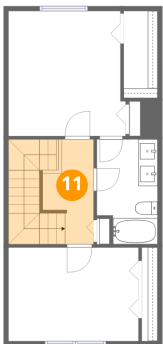
10 Floor 2 - Primary Bedroom



Dimensions: 12'2" x 12'11"
Area: 152 sq. ft
Counted as living area: Yes

Heated: Yes
Finished: Yes
Enclosed: Yes
Contiguous: Yes
Permitted: Yes
Wet space: No
Addition: No
Conversion: No

11 Floor 2 - Hall

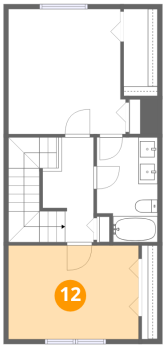


Dimensions: 5'3" x 10'10"
Area: 96 sq. ft
Counted as living area: Yes

Heated: Yes
Finished: Yes
Enclosed: Yes
Contiguous: Yes
Permitted: Yes
Wet space: No
Addition: No
Conversion: No

4367 Har Paul Circle, Ansley Park, Egypt Lake-Leto, Tampa,
Hillsborough County, Florida, United States, 33614

12 Floor 2 - Bedroom



Dimensions: 13'6" x 9'8"
Area: 131 sq. ft
Counted as living area: Yes

Heated: Yes
Finished: Yes
Enclosed: Yes
Contiguous: Yes
Permitted: Yes
Wet space: No
Addition: No
Conversion: No

13 Floor 2 - W.I.C.



Dimensions: 3'6" x 9'0"
Area: 32 sq. ft
Counted as living area: Yes

Heated: Yes
Finished: Yes
Enclosed: Yes
Contiguous: Yes
Permitted: Yes
Wet space: No
Addition: No
Conversion: No