

Home report

2490 Half Moon Bay, Stonebridge, Nepean, Ontario, Canada,
K2J 6K5




Total Area: 2750 sq. ft


Below Ground: 73 sq. ft, Floor 2: 1148 sq. ft, Floor 3: 1529 sq. ft


Excluded: Utility 438 sq. ft, Basement 584 sq. ft, Balcony 118 sq. ft, Walls: 248 sq. ft

Property summary

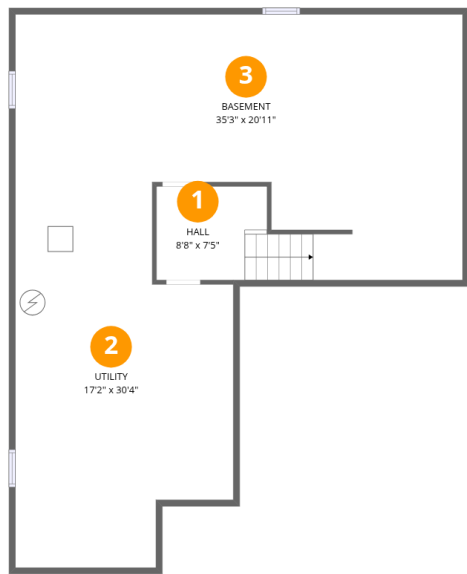
 **3** Floors

 **4** Bedrooms

 **2** Bathrooms

 **1** Half baths

2490 Half Moon Bay, Stonebridge, Nepean, Ontario, Canada,
K2J 6K5



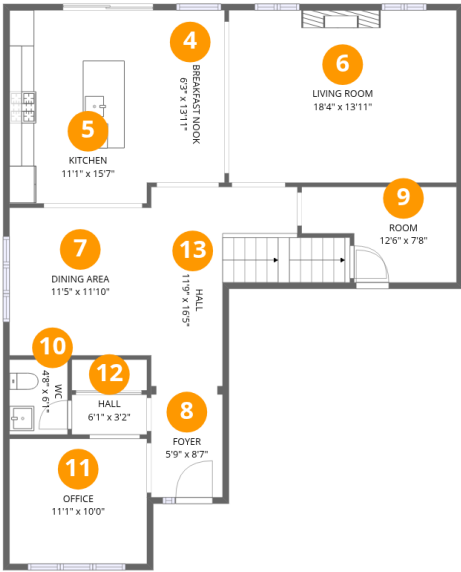
Room dimensions

Floor 1 Below ground Total:73sqft Excluded: 1022sqft

#		Max Dimensions	sqft	Included
1	Hall	8'8" x 7'5"	64 sq. ft	Yes
2	Utility	17'2" x 30'4"	438 sq. ft	No
3	Basement	35'3" x 20'11"	582 sq. ft	No

Home report

2490 Half Moon Bay, Stonebridge, Nepean, Ontario, Canada, K2J 6K5



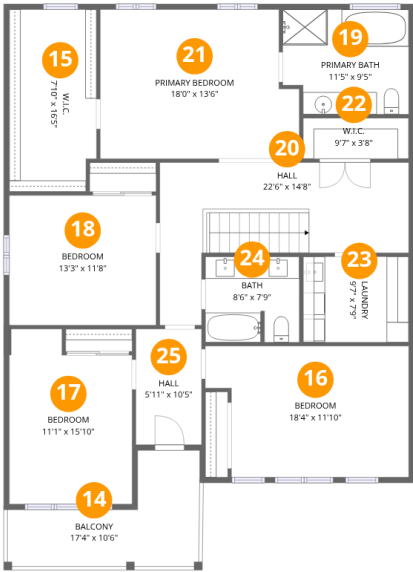
Room dimensions

Floor 2 Total:1148sqft Excluded: 0sqft

#		Max Dimensions	sqft	Included
4	Breakfast Nook	6'3" x 13'11"	87 sq. ft	Yes
5	Kitchen	11'1" x 15'7"	173 sq. ft	Yes
6	Living Room	18'4" x 13'11"	255 sq. ft	Yes
7	Dining Area	11'5" x 11'10"	136 sq. ft	Yes
8	Foyer	5'9" x 8'7"	50 sq. ft	Yes
9	Room	12'6" x 7'8"	80 sq. ft	Yes
10	WC	4'8" x 6'1"	28 sq. ft	Yes
11	Office	11'1" x 10'0"	112 sq. ft	Yes
12	Hall	6'1" x 3'2"	21 sq. ft	Yes
13	Hall	11'9" x 16'5"	157 sq. ft	Yes

Home report

2490 Half Moon Bay, Stonebridge, Nepean, Ontario, Canada, K2J 6K5



Room dimensions

Floor 3 Total:1529sqft Excluded: 118sqft

#		Max Dimensions	sqft	Included
14	Balcony	17'4" x 10'6"	118 sq. ft	No
15	W.I.C.	7'10" x 16'5"	127 sq. ft	Yes
16	Bedroom	18'4" x 11'10"	198 sq. ft	Yes
17	Bedroom	11'1" x 15'10"	160 sq. ft	Yes
18	Bedroom	13'3" x 11'8"	155 sq. ft	Yes
19	Primary Bath	11'5" x 9'5"	103 sq. ft	Yes
20	Hall	22'6" x 14'8"	208 sq. ft	Yes
21	Primary Bedroom	18'0" x 13'6"	229 sq. ft	Yes
22	W.I.C.	9'7" x 3'8"	35 sq. ft	Yes
23	Laundry	9'7" x 7'9"	74 sq. ft	Yes
24	Bath	8'6" x 7'9"	65 sq. ft	Yes

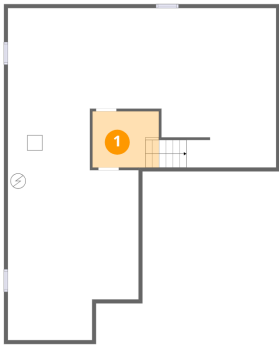
Home report

2490 Half Moon Bay, Stonebridge, Nepean, Ontario, Canada,
K2J 6K5

#		Max Dimensions	sqft	Included
25	Hall	5'11" x 10'5"	62 sq. ft	Yes

2490 Half Moon Bay, Stonebridge, Nepean, Ontario, Canada,
K2J 6K5

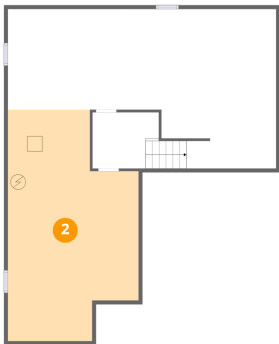
1 Floor 1 - Hall



Max Dimensions: 8'8" x 7'5"
Calculated Area: 64 sq. ft
Included: No

Heated: Yes
Finished: Yes
Enclosed: Yes
Contiguous: No
Permitted: Yes
Wet space: No
Addition: No
Conversion: No

2 Floor 1 - Utility

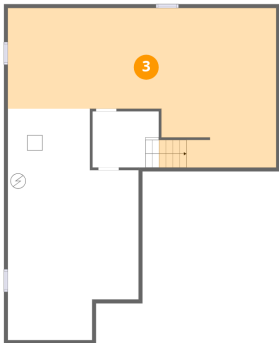


Max Dimensions: 17'2" x 30'4"
Calculated Area: 438 sq. ft
Included: No

Heated: Yes
Finished: No
Enclosed: Yes
Contiguous: Yes
Permitted: Yes
Wet space: No
Addition: No
Conversion: No

2490 Half Moon Bay, Stonebridge, Nepean, Ontario, Canada,
K2J 6K5

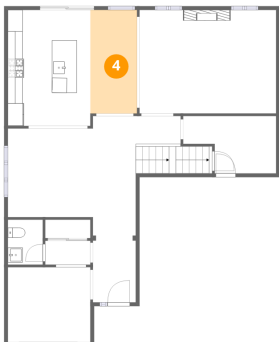
3 Floor 1 - Basement



Max Dimensions: 35'3" x 20'11"
Calculated Area: 582 sq. ft
Included: No

Heated: Yes
Finished: No
Enclosed: Yes
Contiguous: Yes
Permitted: Yes
Wet space: No
Addition: No
Conversion: No

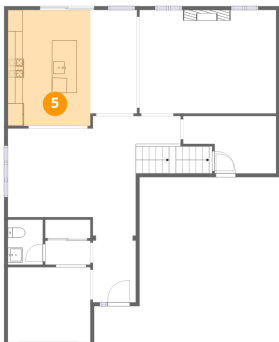
4 Floor 2 - Breakfast Nook



Max Dimensions: 6'3" x 13'11"
Calculated Area: 87 sq. ft
Included: Yes

Heated: Yes
Finished: Yes
Enclosed: Yes
Contiguous: Yes
Permitted: Yes
Wet space: No
Addition: No
Conversion: No

5 Floor 2 - Kitchen

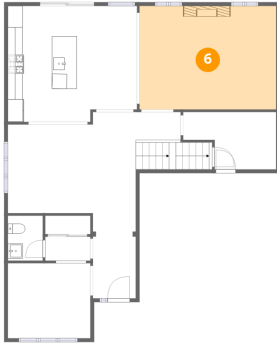


Max Dimensions: 11'1" x 15'7"
Calculated Area: 173 sq. ft
Included: Yes

Heated: Yes
Finished: Yes
Enclosed: Yes
Contiguous: Yes
Permitted: Yes
Wet space: No
Addition: No
Conversion: No

2490 Half Moon Bay, Stonebridge, Nepean, Ontario, Canada,
K2J 6K5

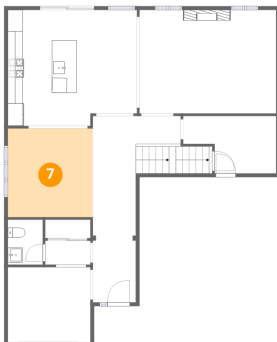
6 Floor 2 - Living Room



Max Dimensions: 18'4" x 13'11"
Calculated Area: 255 sq. ft
Included: Yes

Heated: Yes
Finished: Yes
Enclosed: Yes
Contiguous: Yes
Permitted: Yes
Wet space: No
Addition: No
Conversion: No

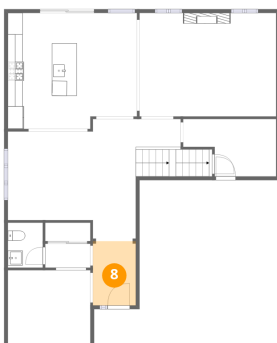
7 Floor 2 - Dining Area



Max Dimensions: 11'5" x 11'10"
Calculated Area: 136 sq. ft
Included: Yes

Heated: Yes
Finished: Yes
Enclosed: Yes
Contiguous: Yes
Permitted: Yes
Wet space: No
Addition: No
Conversion: No

8 Floor 2 - Foyer

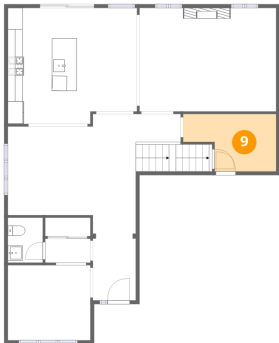


Max Dimensions: 5'9" x 8'7"
Calculated Area: 50 sq. ft
Included: Yes

Heated: Yes
Finished: Yes
Enclosed: Yes
Contiguous: Yes
Permitted: Yes
Wet space: No
Addition: No
Conversion: No

2490 Half Moon Bay, Stonebridge, Nepean, Ontario, Canada,
K2J 6K5

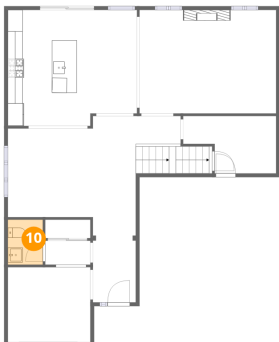
9 Floor 2 - Room



Max Dimensions: 12'6" x 7'8"
Calculated Area: 80 sq. ft
Included: Yes

Heated: Yes
Finished: Yes
Enclosed: Yes
Contiguous: Yes
Permitted: Yes
Wet space: No
Addition: No
Conversion: No

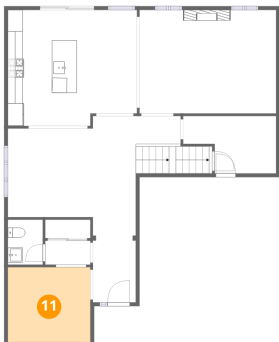
10 Floor 2 - WC



Max Dimensions: 4'8" x 6'1"
Calculated Area: 28 sq. ft
Included: Yes

Heated: Yes
Finished: Yes
Enclosed: Yes
Contiguous: Yes
Permitted: Yes
Wet space: Yes
Addition: No
Conversion: No

11 Floor 2 - Office

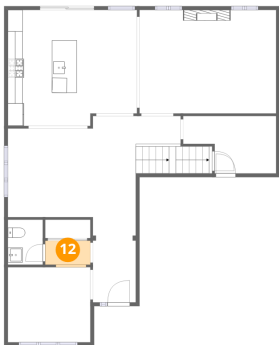


Max Dimensions: 11'1" x 10'0"
Calculated Area: 112 sq. ft
Included: Yes

Heated: Yes
Finished: Yes
Enclosed: Yes
Contiguous: Yes
Permitted: Yes
Wet space: No
Addition: No
Conversion: No

2490 Half Moon Bay, Stonebridge, Nepean, Ontario, Canada,
K2J 6K5

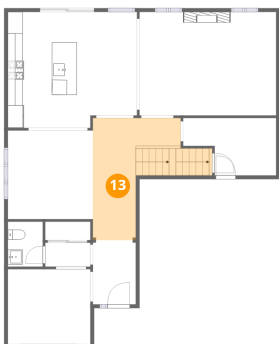
12 Floor 2 - Hall



Max Dimensions: 6'1" x 3'2"
Calculated Area: 21 sq. ft
Included: Yes

Heated: Yes
Finished: Yes
Enclosed: Yes
Contiguous: Yes
Permitted: Yes
Wet space: No
Addition: No
Conversion: No

13 Floor 2 - Hall



Max Dimensions: 11'9" x 16'5"
Calculated Area: 157 sq. ft
Included: Yes

Heated: Yes
Finished: Yes
Enclosed: Yes
Contiguous: Yes
Permitted: Yes
Wet space: No
Addition: No
Conversion: No

14 Floor 3 - Balcony



Max Dimensions: 17'4" x 10'6"
Calculated Area: 118 sq. ft
Included: No

Heated: No
Finished: No
Enclosed: No
Contiguous: Yes
Permitted: Yes
Wet space: No
Addition: No
Conversion: No

2490 Half Moon Bay, Stonebridge, Nepean, Ontario, Canada,
K2J 6K5

15 Floor 3 - W.I.C.



Max Dimensions: 7'10" x 16'5"
Calculated Area: 127 sq. ft
Included: Yes

Heated: Yes
Finished: Yes
Enclosed: Yes
Contiguous: Yes
Permitted: Yes
Wet space: No
Addition: No
Conversion: No

16 Floor 3 - Bedroom



Max Dimensions: 18'4" x 11'10"
Calculated Area: 198 sq. ft
Included: Yes

Heated: Yes
Finished: Yes
Enclosed: Yes
Contiguous: Yes
Permitted: Yes
Wet space: No
Addition: No
Conversion: No

17 Floor 3 - Bedroom



Max Dimensions: 11'1" x 15'10"
Calculated Area: 160 sq. ft
Included: Yes

Heated: Yes
Finished: Yes
Enclosed: Yes
Contiguous: Yes
Permitted: Yes
Wet space: No
Addition: No
Conversion: No

2490 Half Moon Bay, Stonebridge, Nepean, Ontario, Canada,
K2J 6K5

18 Floor 3 - Bedroom



Max Dimensions: 13'3" x 11'8"
Calculated Area: 155 sq. ft
Included: Yes

Heated: Yes
Finished: Yes
Enclosed: Yes
Contiguous: Yes
Permitted: Yes
Wet space: No
Addition: No
Conversion: No

19 Floor 3 - Primary Bath



Max Dimensions: 11'5" x 9'5"
Calculated Area: 103 sq. ft
Included: Yes

Heated: Yes
Finished: Yes
Enclosed: Yes
Contiguous: Yes
Permitted: Yes
Wet space: Yes
Addition: No
Conversion: No

20 Floor 3 - Hall



Max Dimensions: 22'6" x 14'8"
Calculated Area: 208 sq. ft
Included: Yes

Heated: Yes
Finished: Yes
Enclosed: Yes
Contiguous: Yes
Permitted: Yes
Wet space: No
Addition: No
Conversion: No

2490 Half Moon Bay, Stonebridge, Nepean, Ontario, Canada,
K2J 6K5

21 Floor 3 - Primary Bedroom



Max Dimensions: 18'0" x 13'6"
Calculated Area: 229 sq. ft
Included: Yes

Heated: Yes
Finished: Yes
Enclosed: Yes
Contiguous: Yes
Permitted: Yes
Wet space: No
Addition: No
Conversion: No

22 Floor 3 - W.I.C.



Max Dimensions: 9'7" x 3'8"
Calculated Area: 35 sq. ft
Included: Yes

Heated: Yes
Finished: Yes
Enclosed: Yes
Contiguous: Yes
Permitted: Yes
Wet space: No
Addition: No
Conversion: No

23 Floor 3 - Laundry



Max Dimensions: 9'7" x 7'9"
Calculated Area: 74 sq. ft
Included: Yes

Heated: Yes
Finished: Yes
Enclosed: Yes
Contiguous: Yes
Permitted: Yes
Wet space: No
Addition: No
Conversion: No

2490 Half Moon Bay, Stonebridge, Nepean, Ontario, Canada,
K2J 6K5

24 Floor 3 - Bath



Max Dimensions: 8'6" x 7'9"
Calculated Area: 65 sq. ft
Included: Yes

Heated: Yes
Finished: Yes
Enclosed: Yes
Contiguous: Yes
Permitted: Yes
Wet space: Yes
Addition: No
Conversion: No

25 Floor 3 - Hall



Max Dimensions: 5'11" x 10'5"
Calculated Area: 62 sq. ft
Included: Yes

Heated: Yes
Finished: Yes
Enclosed: Yes
Contiguous: Yes
Permitted: Yes
Wet space: No
Addition: No
Conversion: No