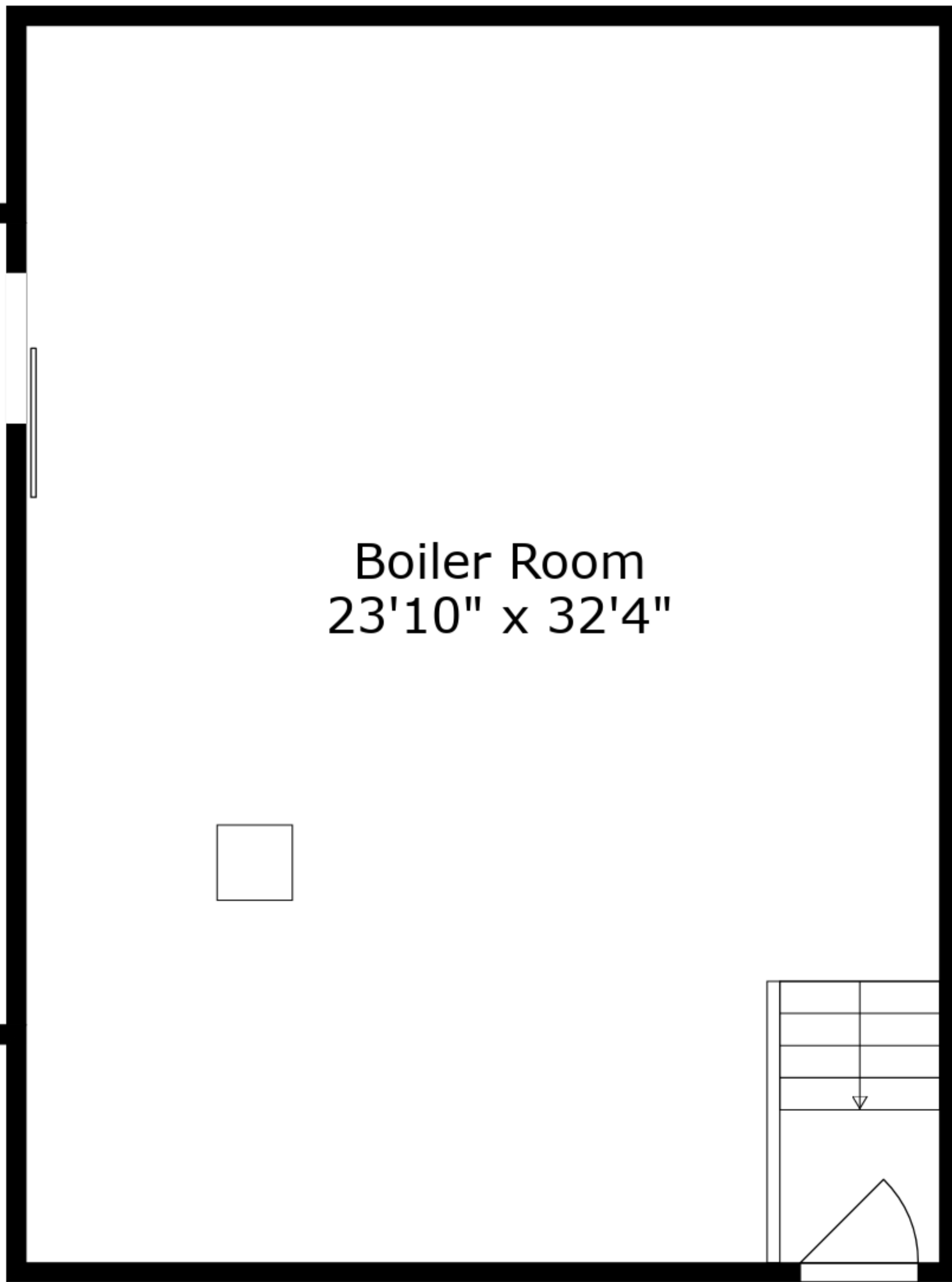
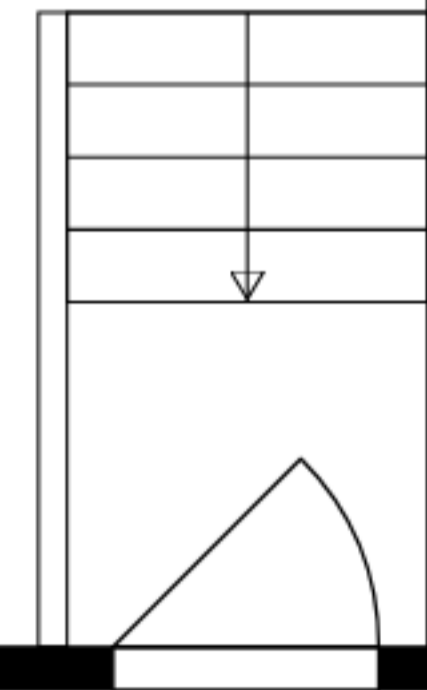


Storage
10'10" x 21'0"

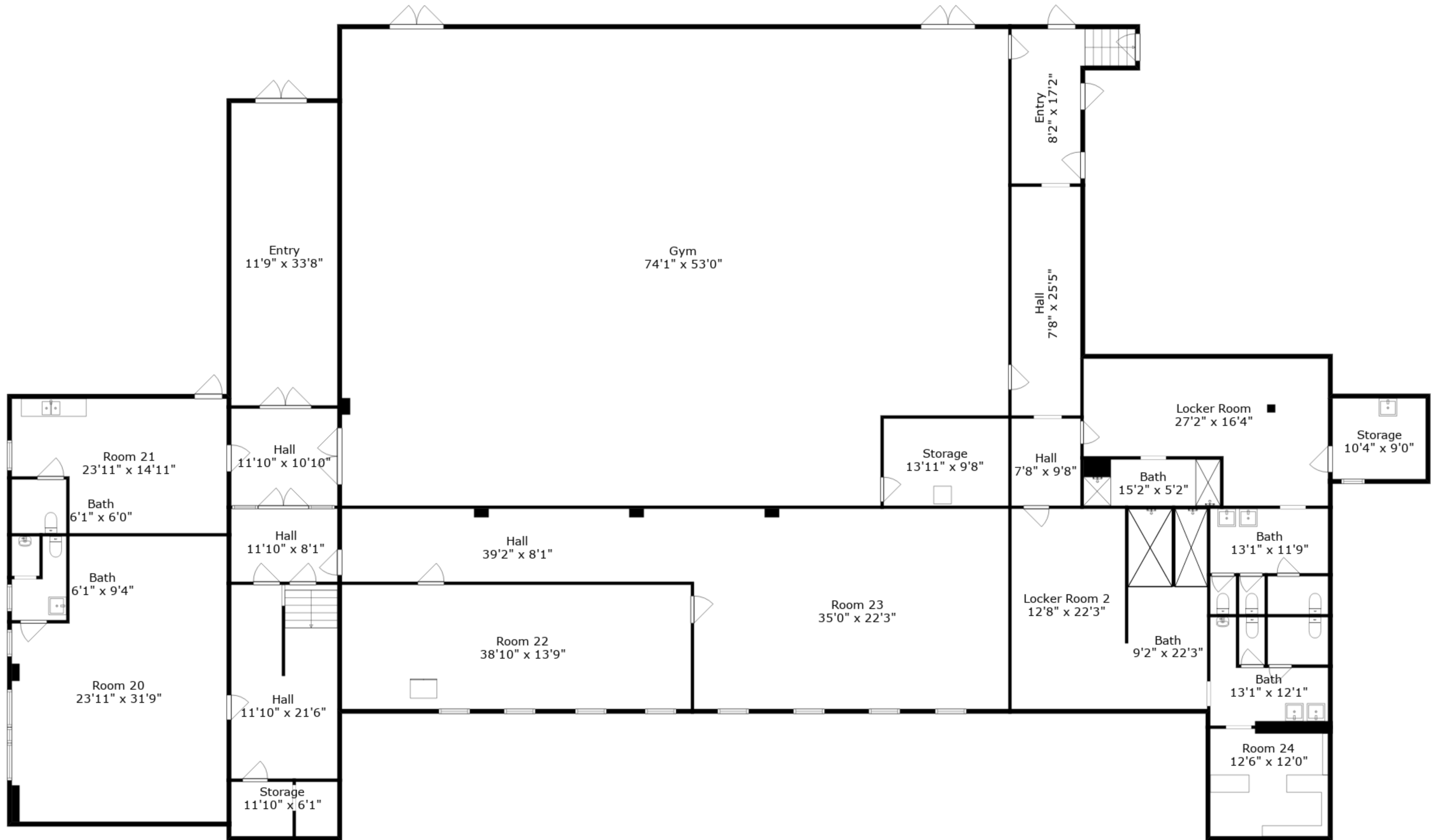


Boiler Room
23'10" x 32'4"



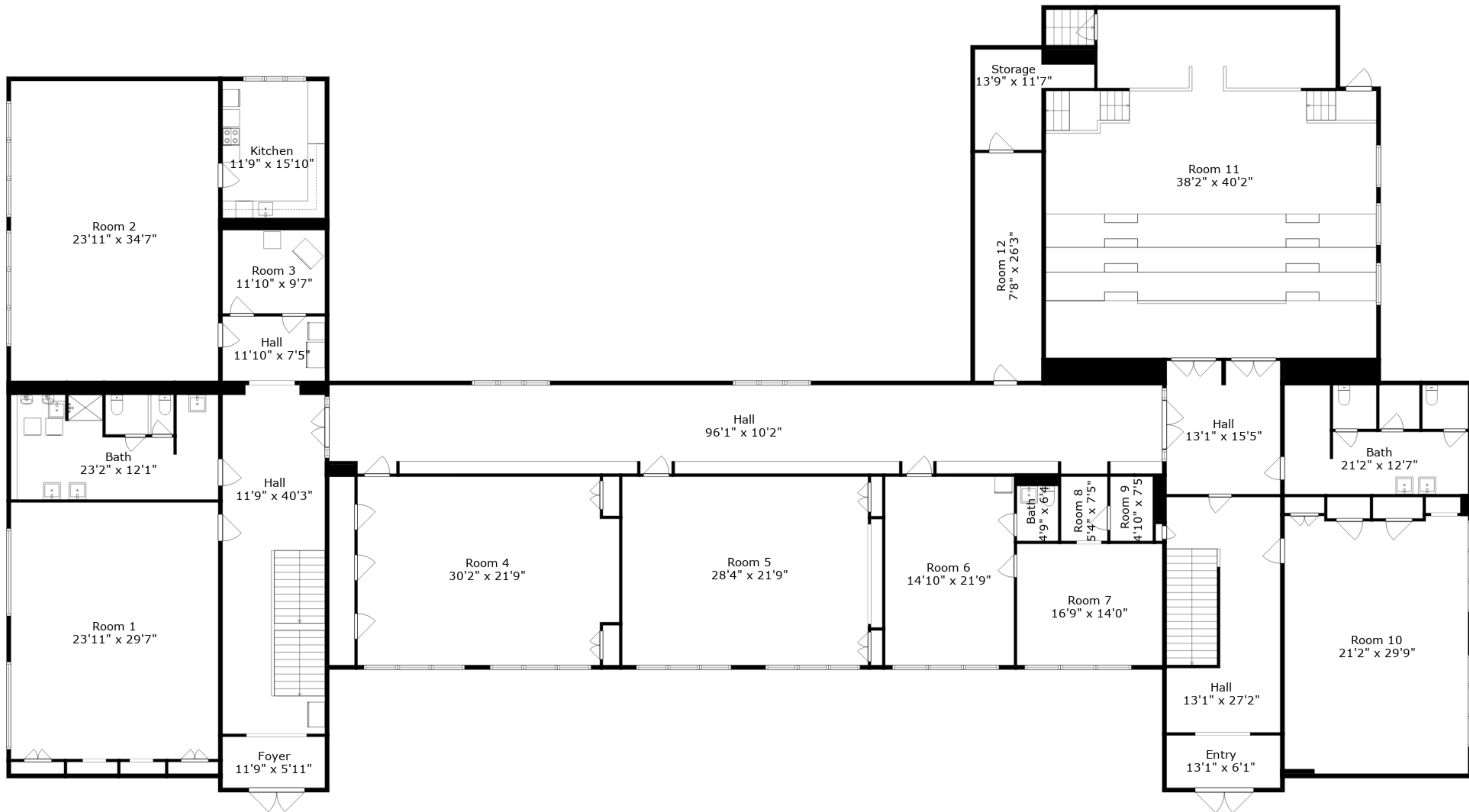
Total GLA: 28844 sq. ft | Total: 28844 sq. ft
Basement: 1082 sq. ft
Lower floor: 10008 sq. ft
Main floor: 9862 sq. ft
Upper floor: 7892 sq. ft

Sizes And Dimensions Are Approximate. Actual May Vary.



Total GLA: 28844 sq. ft | Total: 28844 sq. ft
 Basement: 1082 sq. ft
 Lower floor: 10008 sq. ft
 Main floor: 9862 sq. ft
 Upper floor: 7892 sq. ft

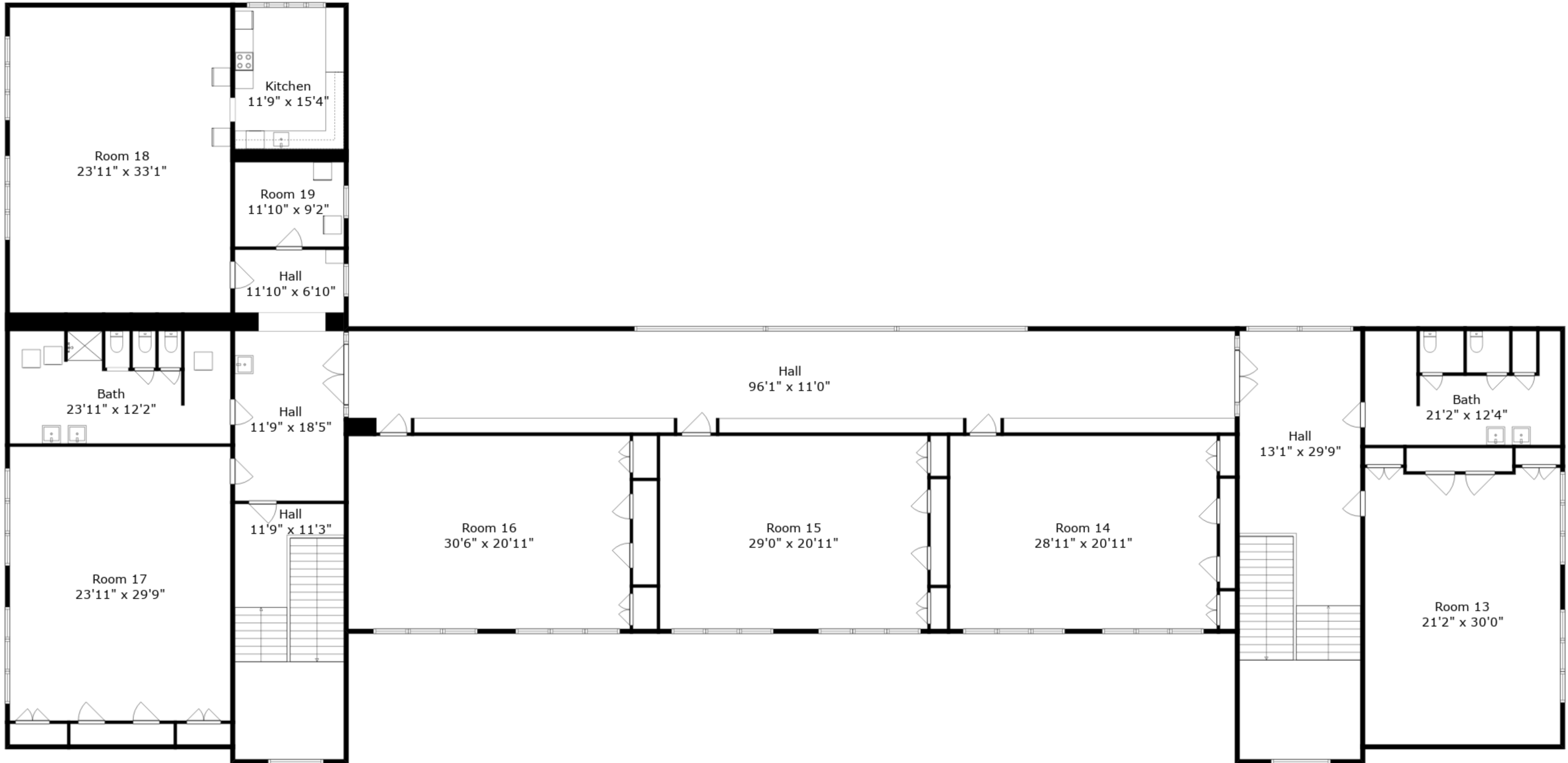
Sizes And Dimensions Are Approximate. Actual May Vary.



Total GLA: 28844 sq. ft | Total: 28844 sq. ft

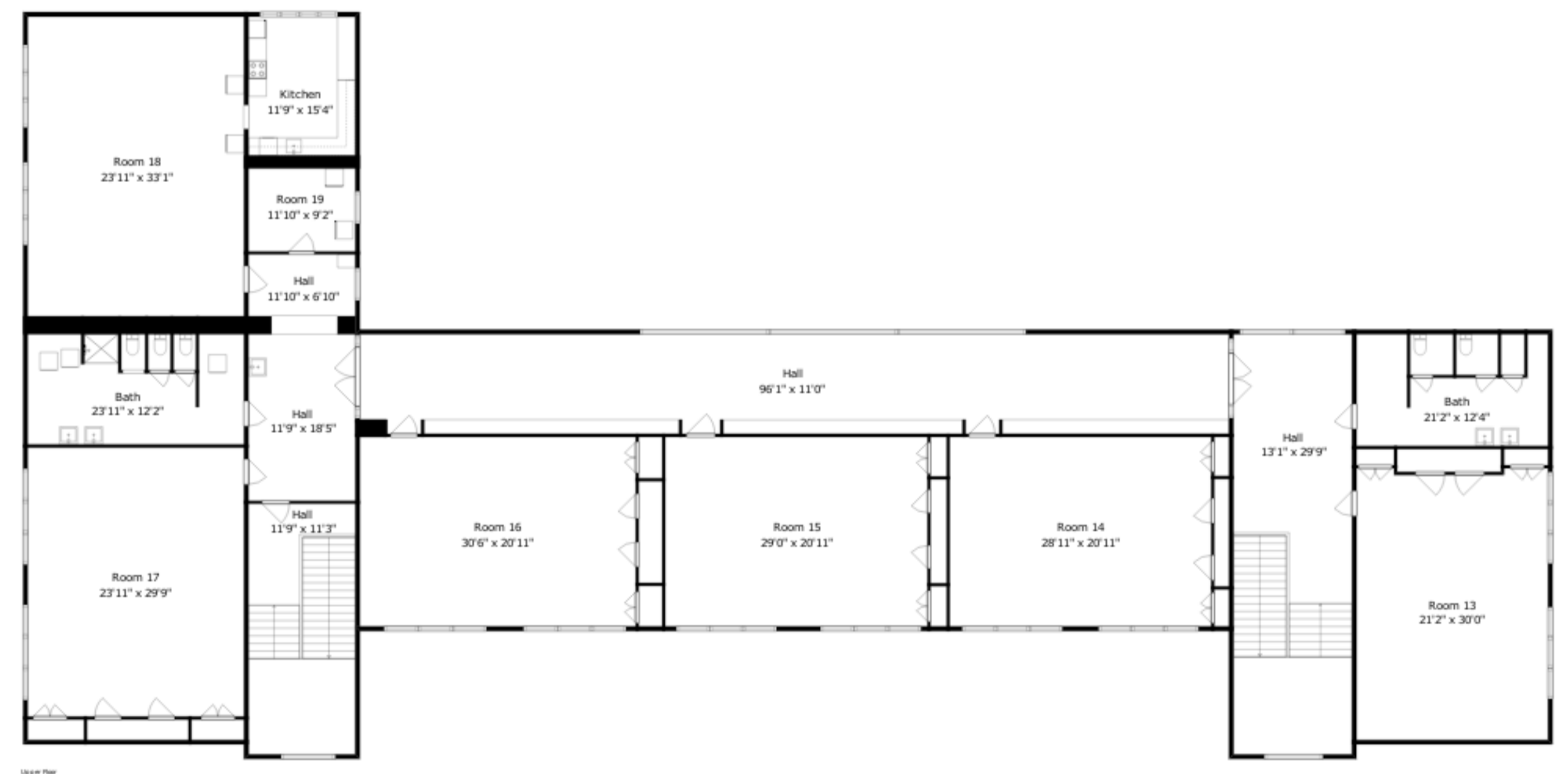
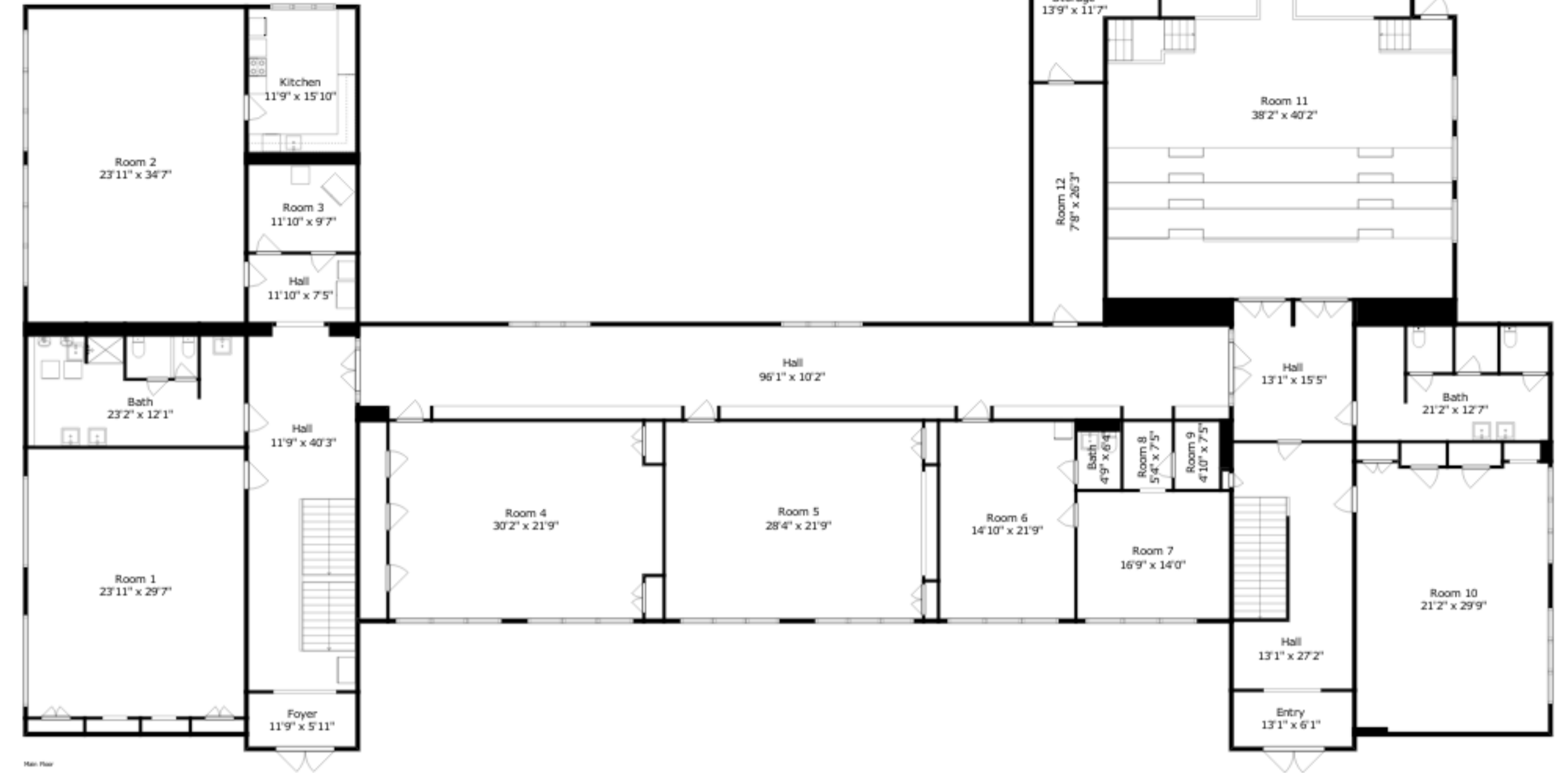
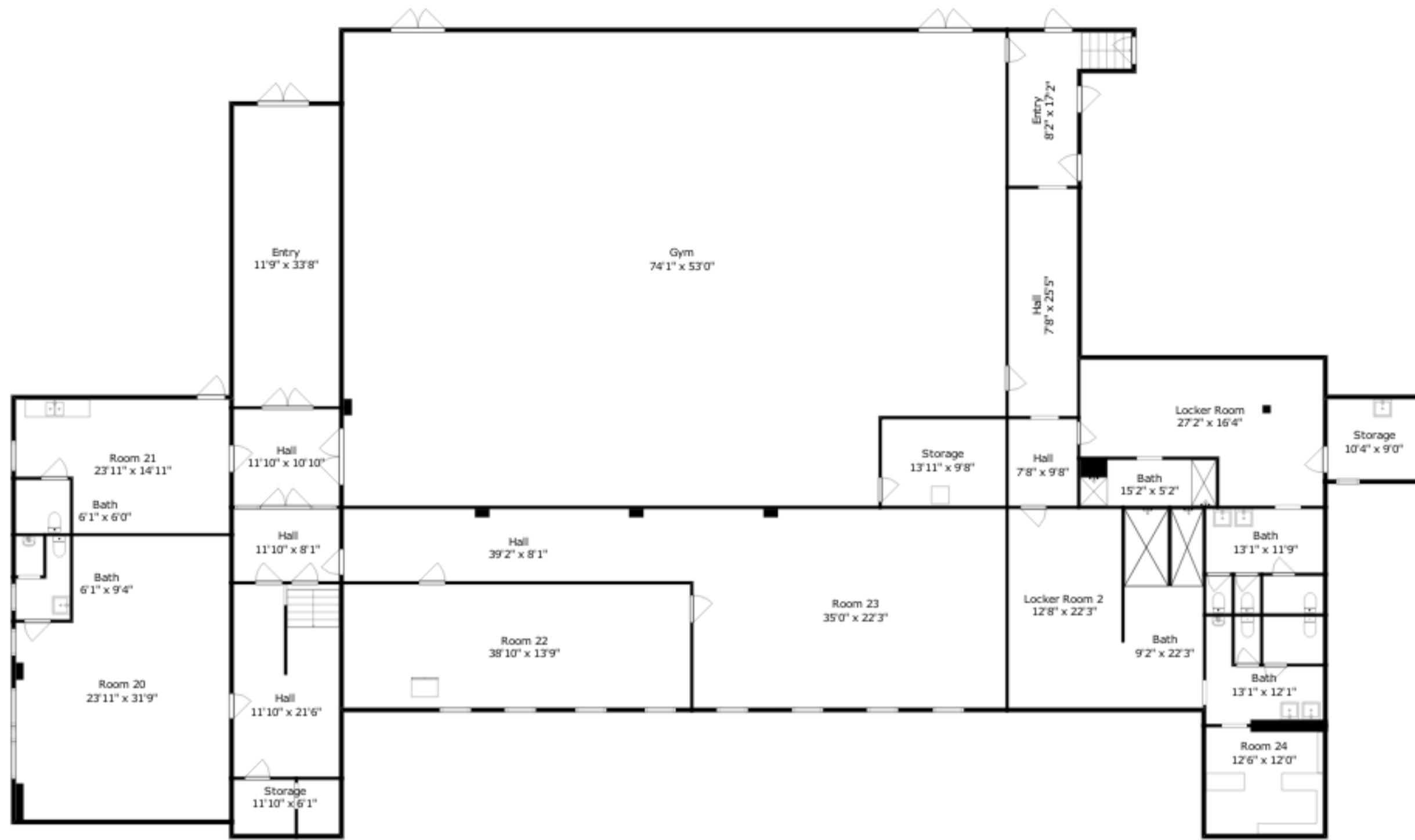
Basement: 1082 sq. ft
 Lower floor: 10008 sq. ft
 Main floor: 9862 sq. ft
 Upper floor: 7892 sq. ft

Sizes And Dimensions Are Approximate. Actual May Vary.



Total GLA: 28844 sq. ft | Total: 28844 sq. ft
 Basement: 1082 sq. ft
 Lower floor: 10008 sq. ft
 Main floor: 9862 sq. ft
 Upper floor: 7892 sq. ft

Sizes And Dimensions Are Approximate. Actual May Vary.



Total GLA: 28844 sq. ft | Total: 28844 sq. ft
 Basement: 1082 sq. ft
 Lower floor: 10008 sq. ft
 Main floor: 9862 sq. ft
 Upper floor: 7892 sq. ft

Sizes And Dimensions Are Approximate. Actual May Vary.