

## Home data report

# 61 Concession Rd 3, Fenelon Falls, ON, CA



**Total Area: 3118 sq. ft**

Basement: 1278 sq. ft, 1st Floor: 1840 sq. ft

Excluded: Garage 520 sq. ft, Deck 306 sq. ft, Walls: 230 sq. ft

## Property summary

 **2** Floors

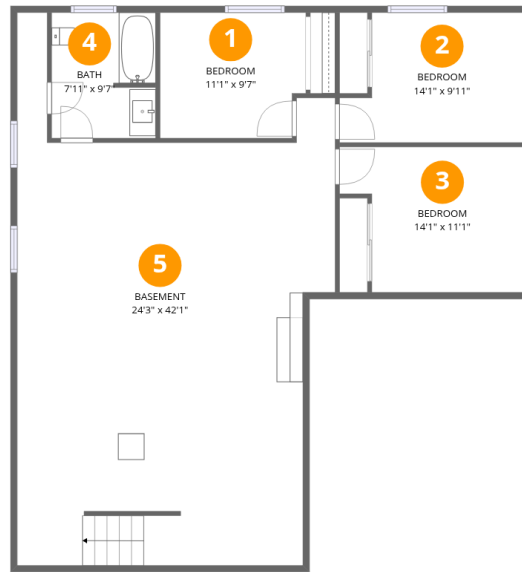
 **5** Bedrooms

 **3** Bathrooms

 **1** Garages

# Home data report

## 61 Concession Rd 3, Fenelon Falls, ON, CA



### Room dimensions

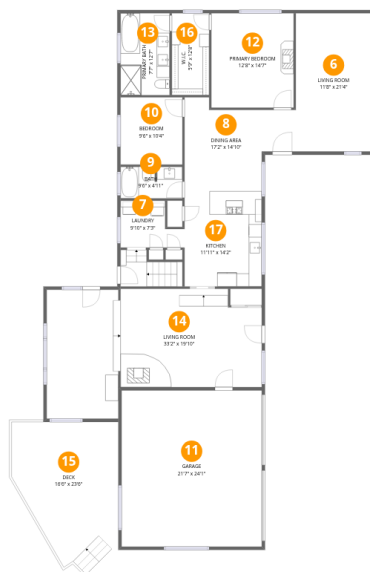
Floor 1 Below grade

Total: 1278 sqft

Excluded: 0 sqft

#		Dimensions	sqft	Counted as living area
1	Bedroom	11'1" x 9'7"	103 sq. ft	Yes
2	Bedroom	14'1" x 9'11"	124 sq. ft	Yes
3	Bedroom	14'1" x 11'1"	138 sq. ft	Yes
4	Bath	7'11" x 9'7"	75 sq. ft	Yes
5	Basement	24'3" x 42'1"	762 sq. ft	Yes

# 61 Concession Rd 3, Fenelon Falls, ON, CA



## Room dimensions

Floor 2

Total: 1840sqft Excluded: 826sqft

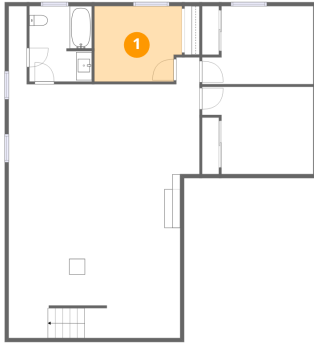
#		Dimensions	sqft	Counted as living area
6	Living Room	11'8" x 21'4"	249 sq. ft	Yes
7	Laundry	9'10" x 7'3"	58 sq. ft	Yes
8	Dining Area	17'2" x 14'10"	195 sq. ft	Yes
9	Bath	9'6" x 4'11"	46 sq. ft	Yes
10	Bedroom	9'6" x 10'4"	99 sq. ft	Yes
11	Garage	21'7" x 24'1"	520 sq. ft	No
12	Primary Bedroom	12'8" x 14'7"	185 sq. ft	Yes
13	Primary Bath	7'7" x 12'7"	96 sq. ft	Yes
14	Living Room	33'2" x 19'10"	539 sq. ft	Yes
15	Deck	16'6" x 23'6"	306 sq. ft	No
16	W.I.C.	5'9" x 12'8"	73 sq. ft	Yes

Home data report

**61 Concession Rd 3,Fenelon Falls,ON,CA**

#		Dimensions	sqft	Counted as living area
17	Kitchen	11'11" x 14'2"	170 sq. ft	Yes

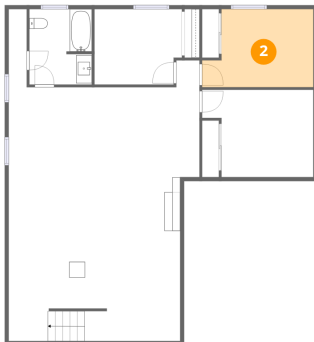
**1 Floor 1 - Bedroom**



Dimensions: 11'1" x 9'7"  
Area: 103 sq. ft  
Counted as living area: Yes

Heated: Yes  
Finished: Yes  
Enclosed: Yes  
Contiguous: Yes  
Permitted: Yes  
Wet space: No  
Addition: No  
Conversion: No

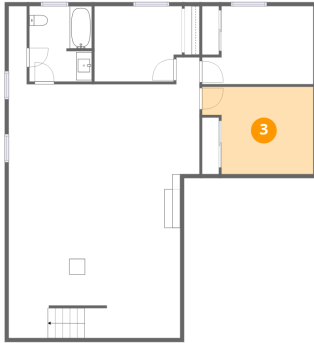
**2 Floor 1 - Bedroom**



Dimensions: 14'1" x 9'11"  
Area: 124 sq. ft  
Counted as living area: Yes

Heated: Yes  
Finished: Yes  
Enclosed: Yes  
Contiguous: Yes  
Permitted: Yes  
Wet space: No  
Addition: No  
Conversion: No

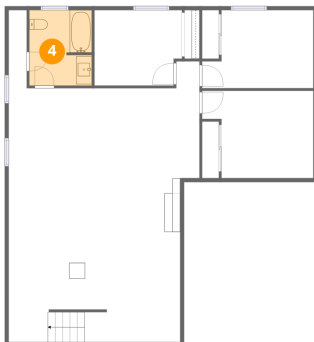
### 3 Floor 1 - Bedroom



Dimensions: 14'1" x 11'1"  
Area: 138 sq. ft  
Counted as living area: Yes

Heated: Yes  
Finished: Yes  
Enclosed: Yes  
Contiguous: Yes  
Permitted: Yes  
Wet space: No  
Addition: No  
Conversion: No

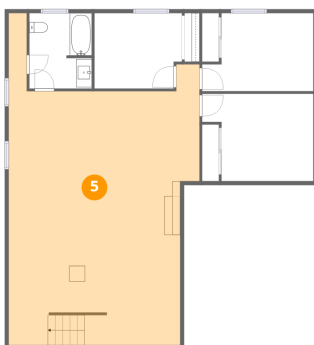
### 4 Floor 1 - Bath



Dimensions: 7'11" x 9'7"  
Area: 75 sq. ft  
Counted as living area: Yes

Heated: Yes  
Finished: Yes  
Enclosed: Yes  
Contiguous: Yes  
Permitted: Yes  
Wet space: Yes  
Addition: No  
Conversion: No

### 5 Floor 1 - Basement



Dimensions: 24'3" x 42'1"  
Area: 762 sq. ft  
Counted as living area: Yes

Heated: Yes  
Finished: Yes  
Enclosed: Yes  
Contiguous: Yes  
Permitted: Yes  
Wet space: No  
Addition: No  
Conversion: No

**6** Floor 2 - Living Room

---

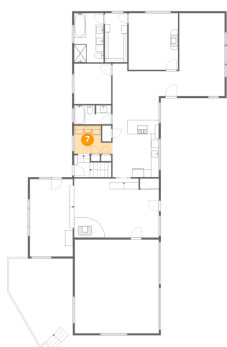


Dimensions: 11'8" x 21'4"  
Area: 249 sq. ft  
Counted as living area: Yes

Heated: Yes  
Finished: Yes  
Enclosed: Yes  
Contiguous: Yes  
Permitted: Yes  
Wet space: No  
Addition: No  
Conversion: No

**7** Floor 2 - Laundry

---



Dimensions: 9'10" x 7'3"  
Area: 58 sq. ft  
Counted as living area: Yes

Heated: Yes  
Finished: Yes  
Enclosed: Yes  
Contiguous: Yes  
Permitted: Yes  
Wet space: No  
Addition: No  
Conversion: No

**8** Floor 2 - Dining Area

---



Dimensions: 17'2" x 14'10"  
Area: 195 sq. ft  
Counted as living area: Yes

Heated: Yes  
Finished: Yes  
Enclosed: Yes  
Contiguous: Yes  
Permitted: Yes  
Wet space: No  
Addition: No  
Conversion: No

**9** Floor 2 - Bath



Dimensions: 9'6" x 4'11"  
Area: 46 sq. ft  
Counted as living area: Yes

Heated: Yes  
Finished: Yes  
Enclosed: Yes  
Contiguous: Yes  
Permitted: Yes  
Wet space: Yes  
Addition: No  
Conversion: No

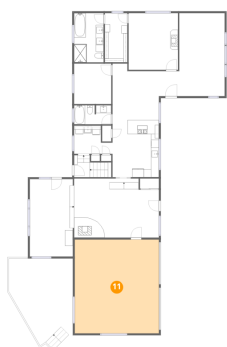
**10** Floor 2 - Bedroom



Dimensions: 9'6" x 10'4"  
Area: 99 sq. ft  
Counted as living area: Yes

Heated: Yes  
Finished: Yes  
Enclosed: Yes  
Contiguous: Yes  
Permitted: Yes  
Wet space: No  
Addition: No  
Conversion: No

**11** Floor 2 - Garage



Dimensions: 21'7" x 24'1"  
Area: 520 sq. ft  
Counted as living area: No

Heated: No  
Finished: No  
Enclosed: Yes  
Contiguous: Yes  
Permitted: Yes  
Wet space: No  
Addition: No  
Conversion: No

## 12 Floor 2 - Primary Bedroom



Dimensions: 12'8" x 14'7"  
Area: 185 sq. ft  
Counted as living area: Yes

Heated: Yes  
Finished: Yes  
Enclosed: Yes  
Contiguous: Yes  
Permitted: Yes  
Wet space: No  
Addition: No  
Conversion: No

## 13 Floor 2 - Primary Bath



Dimensions: 7'7" x 12'7"  
Area: 96 sq. ft  
Counted as living area: Yes

Heated: Yes  
Finished: Yes  
Enclosed: Yes  
Contiguous: Yes  
Permitted: Yes  
Wet space: Yes  
Addition: No  
Conversion: No

## 14 Floor 2 - Living Room



Dimensions: 33'2" x 19'10"  
Area: 539 sq. ft  
Counted as living area: Yes

Heated: Yes  
Finished: Yes  
Enclosed: Yes  
Contiguous: Yes  
Permitted: Yes  
Wet space: No  
Addition: No  
Conversion: No

**15** Floor 2 - Deck



Dimensions: 16'6" x 23'6"  
Area: 306 sq. ft  
Counted as living area: No

Heated: No  
Finished: No  
Enclosed: No  
Contiguous: Yes  
Permitted: Yes  
Wet space: No  
Addition: No  
Conversion: No

**16** Floor 2 - W.I.C.



Dimensions: 5'9" x 12'8"  
Area: 73 sq. ft  
Counted as living area: Yes

Heated: Yes  
Finished: Yes  
Enclosed: Yes  
Contiguous: Yes  
Permitted: Yes  
Wet space: No  
Addition: No  
Conversion: No

**17** Floor 2 - Kitchen



Dimensions: 11'11" x 14'2"  
Area: 170 sq. ft  
Counted as living area: Yes

Heated: Yes  
Finished: Yes  
Enclosed: Yes  
Contiguous: Yes  
Permitted: Yes  
Wet space: No  
Addition: No  
Conversion: No