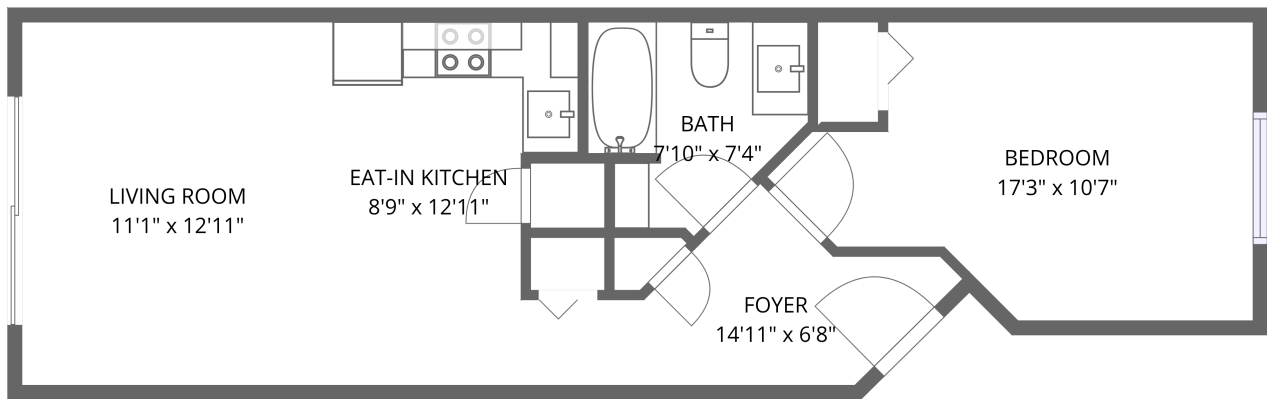


Home data report

1255 Ponce Island Dr, Unit D745, St. Augustine, FL, US, Unit D745



1st floor

Total Area: 532 sq. ft

1st Floor: 532 sq. ft

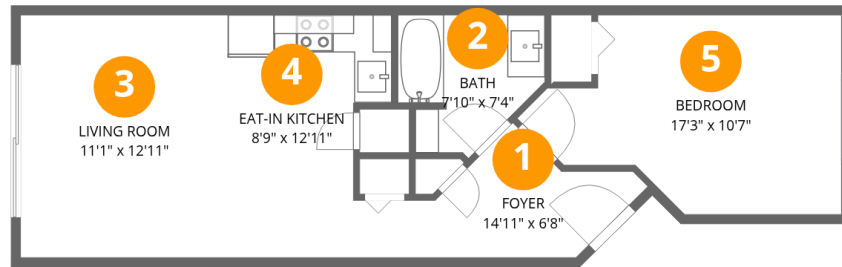
Excluded: Walls: 0 sq. ft

Property summary



Home data report

1255 Ponce Island Dr, Unit D745, St. Augustine, FL, US, Unit D745



Room dimensions

Floor 1

Total:532sqft

Excluded: 0sqft

#		Dimensions	sqft	Counted as living area
1	Foyer	14'11" x 6'8"	99 sq. ft	Yes
2	Bath	7'10" x 7'4"	57 sq. ft	Yes
3	Living Room	11'1" x 12'11"	143 sq. ft	Yes
4	Eat-in Kitchen	8'9" x 12'11"	112 sq. ft	Yes
5	Bedroom	17'3" x 10'7"	183 sq. ft	Yes

1 Floor 1 - Foyer



Dimensions: 14'11" x 6'8"
Area: 99 sq. ft
Counted as living area: Yes

Heated: Yes
Finished: Yes
Enclosed: Yes
Contiguous: Yes
Permitted: Yes
Wet space: No
Addition: No
Conversion: No

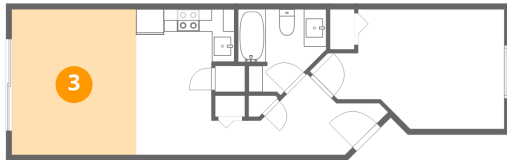
2 Floor 1 - Bath



Dimensions: 7'10" x 7'4"
Area: 57 sq. ft
Counted as living area: Yes

Heated: Yes
Finished: Yes
Enclosed: Yes
Contiguous: Yes
Permitted: Yes
Wet space: Yes
Addition: No
Conversion: No

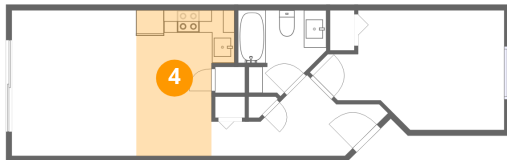
3 Floor 1 - Living Room



Dimensions: 11'1" x 12'11"
Area: 143 sq. ft
Counted as living area: Yes

Heated: Yes
Finished: Yes
Enclosed: Yes
Contiguous: Yes
Permitted: Yes
Wet space: No
Addition: No
Conversion: No

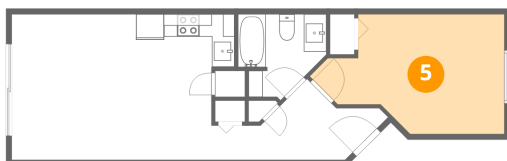
4 Floor 1 - Eat-in Kitchen



Dimensions: 8'9" x 12'11"
Area: 112 sq. ft
Counted as living area: Yes

Heated: Yes
Finished: Yes
Enclosed: Yes
Contiguous: Yes
Permitted: Yes
Wet space: No
Addition: No
Conversion: No

5 Floor 1 - Bedroom



Dimensions: 17'3" x 10'7"
Area: 183 sq. ft
Counted as living area: Yes

Heated: Yes
Finished: Yes
Enclosed: Yes
Contiguous: Yes
Permitted: Yes
Wet space: No
Addition: No
Conversion: No