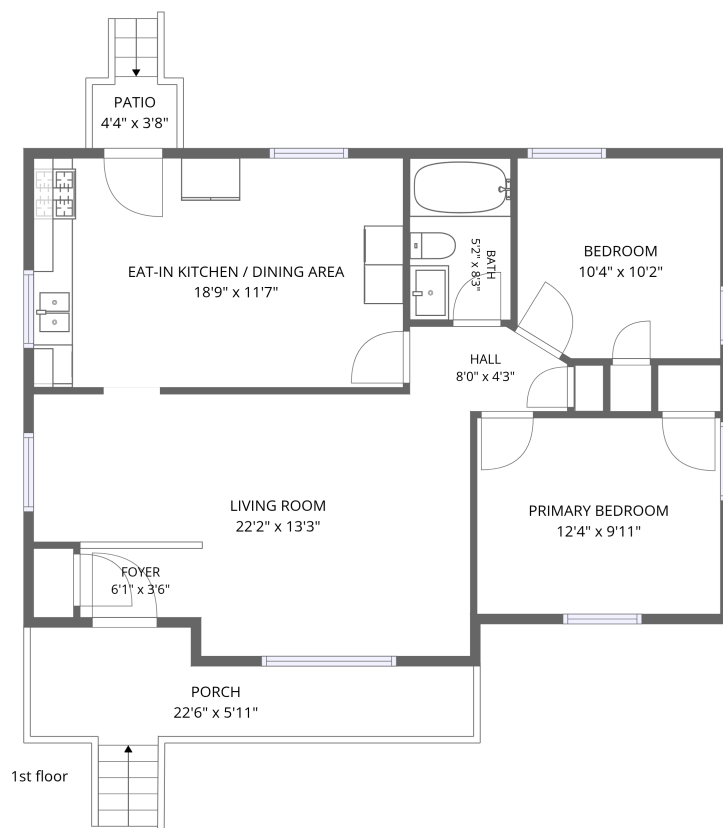


Home data report

1830 Oxford Avenue SW, Roanoke, Virginia, United States



Total Area: 838 sq. ft

1st Floor: 838 sq. ft

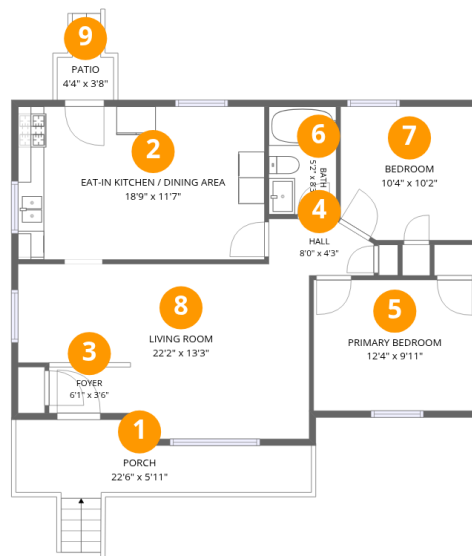
Excluded: Porch 110 sq. ft, Patio 21 sq. ft, Walls: 61 sq. ft

Property summary

 **1** Floors

 **2** Bedrooms

 **1** Bathrooms



Room dimensions

Floor 1

Total:838sqft

Excluded: 131sqft

#		Dimensions	sqft	Counted as living area
1	Porch	22'6" x 5'11"	110 sq. ft	No
2	Eat-in Kitchen / Dining Area	18'9" x 11'7"	218 sq. ft	Yes
3	Foyer	6'1" x 3'6"	24 sq. ft	Yes
4	Hall	8'0" x 4'3"	30 sq. ft	Yes
5	Primary Bedroom	12'4" x 9'11"	123 sq. ft	Yes
6	Bath	5'2" x 8'3"	42 sq. ft	Yes
7	Bedroom	10'4" x 10'2"	103 sq. ft	Yes
8	Living Room	22'2" x 13'3"	244 sq. ft	Yes
9	Patio	4'4" x 3'8"	21 sq. ft	No

1 Floor 1 - Porch



Dimensions: 22'6" x 5'11"
Area: 110 sq. ft
Counted as living area: No

Heated: No
Finished: No
Enclosed: No
Contiguous: Yes
Permitted: Yes
Wet space: No
Addition: No
Conversion: No

2 Floor 1 - Eat-in Kitchen / Dining Area



Dimensions: 18'9" x 11'7"
Area: 218 sq. ft
Counted as living area: Yes

Heated: Yes
Finished: Yes
Enclosed: Yes
Contiguous: Yes
Permitted: Yes
Wet space: No
Addition: No
Conversion: No

3 Floor 1 - Foyer



Dimensions: 6'1" x 3'6"
Area: 24 sq. ft
Counted as living area: Yes

Heated: Yes
Finished: Yes
Enclosed: Yes
Contiguous: Yes
Permitted: Yes
Wet space: No
Addition: No
Conversion: No

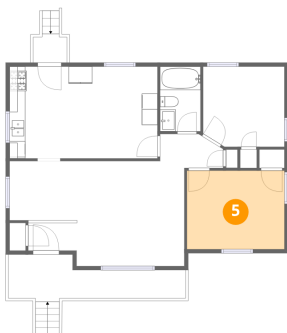
4 Floor 1 - Hall



Dimensions: 8'0" x 4'3"
Area: 30 sq. ft
Counted as living area: Yes

Heated: Yes
Finished: Yes
Enclosed: Yes
Contiguous: Yes
Permitted: Yes
Wet space: No
Addition: No
Conversion: No

5 Floor 1 - Primary Bedroom



Dimensions: 12'4" x 9'11"
Area: 123 sq. ft
Counted as living area: Yes

Heated: Yes
Finished: Yes
Enclosed: Yes
Contiguous: Yes
Permitted: Yes
Wet space: No
Addition: No
Conversion: No

6 Floor 1 - Bath



Dimensions: 5'2" x 8'3"
Area: 42 sq. ft
Counted as living area: Yes

Heated: Yes
Finished: Yes
Enclosed: Yes
Contiguous: Yes
Permitted: Yes
Wet space: Yes
Addition: No
Conversion: No

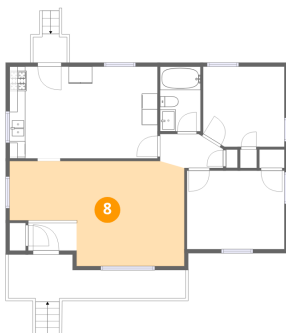
7 Floor 1 - Bedroom



Dimensions: 10'4" x 10'2"
Area: 103 sq. ft
Counted as living area: Yes

Heated: Yes
Finished: Yes
Enclosed: Yes
Contiguous: Yes
Permitted: Yes
Wet space: No
Addition: No
Conversion: No

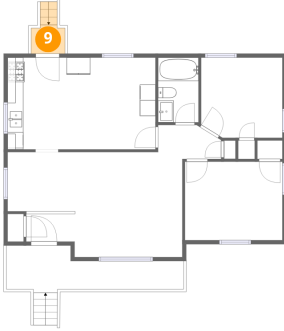
8 Floor 1 - Living Room



Dimensions: 22'2" x 13'3"
Area: 244 sq. ft
Counted as living area: Yes

Heated: Yes
Finished: Yes
Enclosed: Yes
Contiguous: Yes
Permitted: Yes
Wet space: No
Addition: No
Conversion: No

9 Floor 1 - Patio



Dimensions: 4'4" x 3'8"
Area: 21 sq. ft
Counted as living area: No

Heated: No
Finished: No
Enclosed: No
Contiguous: Yes
Permitted: Yes
Wet space: No
Addition: No
Conversion: No