

Home data report

36 Coal Street, Port Carbon, Schuylkill County, Pennsylvania,
United States, 17965



Total Area: 1804 sq. ft

Below Ground: 0 sq. ft, 1st Floor: 672 sq. ft, 2nd Floor: 697 sq. ft, 3rd Floor: 435 sq. ft
Excluded: Basement 611 sq. ft, Deck 184 sq. ft, Porch 82 sq. ft, Hall 24 sq. ft, Walls: 171 sq. ft

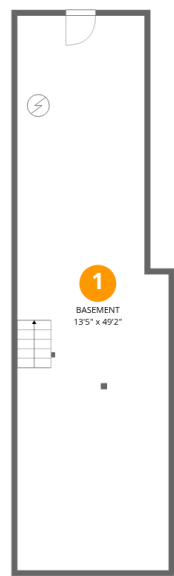
Property summary

 **4** Floors

 **2** Bedrooms

 **2** Bathrooms

36 Coal Street, Port Carbon, Schuylkill County, Pennsylvania,
United States, 17965



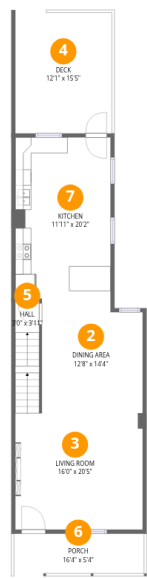
Room dimensions

Floor 1 Below grade Total:0sqft Excluded: 611sqft

#		Dimensions	sqft	Counted as living area
1	Basement	13'5" x 49'2"	611 sq. ft	No

Home data report

36 Coal Street, Port Carbon, Schuylkill County, Pennsylvania,
United States, 17965



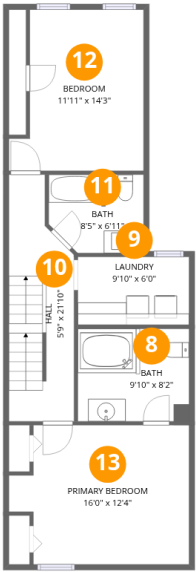
Room dimensions

Floor 2 Total:672sqft Excluded: 290sqft

#		Dimensions	sqft	Counted as living area
2	Dining Area	12'8" x 14'4"	175 sq. ft	Yes
3	Living Room	16'0" x 20'5"	251 sq. ft	Yes
4	Deck	12'1" x 15'5"	184 sq. ft	No
5	Hall	3'0" x 3'11"	24 sq. ft	No
6	Porch	16'4" x 5'4"	82 sq. ft	No
7	Kitchen	11'11" x 20'2"	241 sq. ft	Yes

Home data report

36 Coal Street, Port Carbon, Schuylkill County, Pennsylvania,
United States, 17965



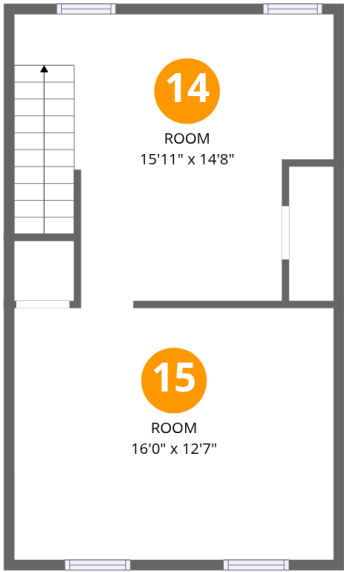
Room dimensions

Floor 3 Total:697sqft Excluded: 0sqft

#		Dimensions	sqft	Counted as living area
8	Bath	9'10" x 8'2"	81 sq. ft	Yes
9	Laundry	9'10" x 6'0"	60 sq. ft	Yes
10	Hall	5'9" x 21'10"	111 sq. ft	Yes
11	Bath	8'5" x 6'11"	54 sq. ft	Yes
12	Bedroom	11'11" x 14'3"	149 sq. ft	Yes
13	Primary Bedroom	16'0" x 12'4"	177 sq. ft	Yes

Home data report

36 Coal Street, Port Carbon, Schuylkill County, Pennsylvania,
United States, 17965



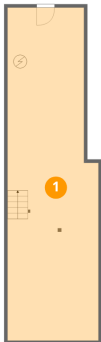
Room dimensions

Floor 4 Total:435sqft Excluded: 0sqft

#		Dimensions	sqft	Counted as living area
14	Room	15'11" x 14'8"	199 sq. ft	Yes
15	Room	16'0" x 12'7"	201 sq. ft	Yes

36 Coal Street, Port Carbon, Schuylkill County, Pennsylvania,
United States, 17965

1 Floor 1 - Basement



Dimensions: 13'5" x 49'2"
Area: 611 sq. ft
Counted as living area: No

Heated: Yes
Finished: No
Enclosed: Yes
Contiguous: Yes
Permitted: Yes
Wet space: No
Addition: No
Conversion: No

2 Floor 2 - Dining Area



Dimensions: 12'8" x 14'4"
Area: 175 sq. ft
Counted as living area: Yes

Heated: Yes
Finished: Yes
Enclosed: Yes
Contiguous: Yes
Permitted: Yes
Wet space: No
Addition: No
Conversion: No

36 Coal Street, Port Carbon, Schuylkill County, Pennsylvania,
United States, 17965

3 Floor 2 - Living Room



Dimensions: 16'0" x 20'5"
Area: 251 sq. ft
Counted as living area: Yes

Heated: Yes
Finished: Yes
Enclosed: Yes
Contiguous: Yes
Permitted: Yes
Wet space: No
Addition: No
Conversion: No

4 Floor 2 - Deck



Dimensions: 12'1" x 15'5"
Area: 184 sq. ft
Counted as living area: No

Heated: No
Finished: No
Enclosed: No
Contiguous: Yes
Permitted: Yes
Wet space: No
Addition: No
Conversion: No

5 Floor 2 - Hall



Dimensions: 3'0" x 3'11"
Area: 24 sq. ft
Counted as living area: No

Heated: Yes
Finished: No
Enclosed: Yes
Contiguous: Yes
Permitted: Yes
Wet space: No
Addition: No
Conversion: No

6 Floor 2 - Porch



Dimensions: 16'4" x 5'4"
Area: 82 sq. ft
Counted as living area: No

Heated: No
Finished: No
Enclosed: No
Contiguous: Yes
Permitted: Yes
Wet space: No
Addition: No
Conversion: No

7 Floor 2 - Kitchen



Dimensions: 11'11" x 20'2"
Area: 241 sq. ft
Counted as living area: Yes

Heated: Yes
Finished: Yes
Enclosed: Yes
Contiguous: Yes
Permitted: Yes
Wet space: No
Addition: No
Conversion: No

8 Floor 3 - Bath



Dimensions: 9'10" x 8'2"
Area: 81 sq. ft
Counted as living area: Yes

Heated: Yes
Finished: Yes
Enclosed: Yes
Contiguous: Yes
Permitted: Yes
Wet space: Yes
Addition: No
Conversion: No

36 Coal Street, Port Carbon, Schuylkill County, Pennsylvania,
United States, 17965

9 Floor 3 - Laundry



Dimensions: 9'10" x 6'0"
Area: 60 sq. ft
Counted as living area: Yes

Heated: Yes
Finished: Yes
Enclosed: Yes
Contiguous: Yes
Permitted: Yes
Wet space: No
Addition: No
Conversion: No

10 Floor 3 - Hall



Dimensions: 5'9" x 21'10"
Area: 111 sq. ft
Counted as living area: Yes

Heated: Yes
Finished: Yes
Enclosed: Yes
Contiguous: Yes
Permitted: Yes
Wet space: No
Addition: No
Conversion: No

11 Floor 3 - Bath



Dimensions: 8'5" x 6'11"
Area: 54 sq. ft
Counted as living area: Yes

Heated: Yes
Finished: Yes
Enclosed: Yes
Contiguous: Yes
Permitted: Yes
Wet space: Yes
Addition: No
Conversion: No

36 Coal Street, Port Carbon, Schuylkill County, Pennsylvania,
United States, 17965

12 Floor 3 - Bedroom



Dimensions: 11'11" x 14'3"
Area: 149 sq. ft
Counted as living area: Yes

Heated: Yes
Finished: Yes
Enclosed: Yes
Contiguous: Yes
Permitted: Yes
Wet space: No
Addition: No
Conversion: No

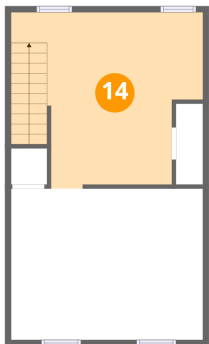
13 Floor 3 - Primary Bedroom



Dimensions: 16'0" x 12'4"
Area: 177 sq. ft
Counted as living area: Yes

Heated: Yes
Finished: Yes
Enclosed: Yes
Contiguous: Yes
Permitted: Yes
Wet space: No
Addition: No
Conversion: No

14 Floor 4 - Room

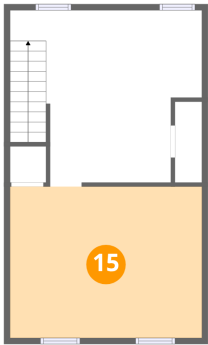


Dimensions: 15'11" x 14'8"
Area: 199 sq. ft
Counted as living area: Yes

Heated: Yes
Finished: Yes
Enclosed: Yes
Contiguous: Yes
Permitted: Yes
Wet space: No
Addition: No
Conversion: No

36 Coal Street, Port Carbon, Schuylkill County, Pennsylvania,
United States, 17965

15 Floor 4 - Room



Dimensions: 16'0" x 12'7"
Area: 201 sq. ft
Counted as living area: Yes

Heated: Yes
Finished: Yes
Enclosed: Yes
Contiguous: Yes
Permitted: Yes
Wet space: No
Addition: No
Conversion: No