

LIVING ROOM  
10'4" x 17'4"

KITCHEN  
10'6" x 10'1"

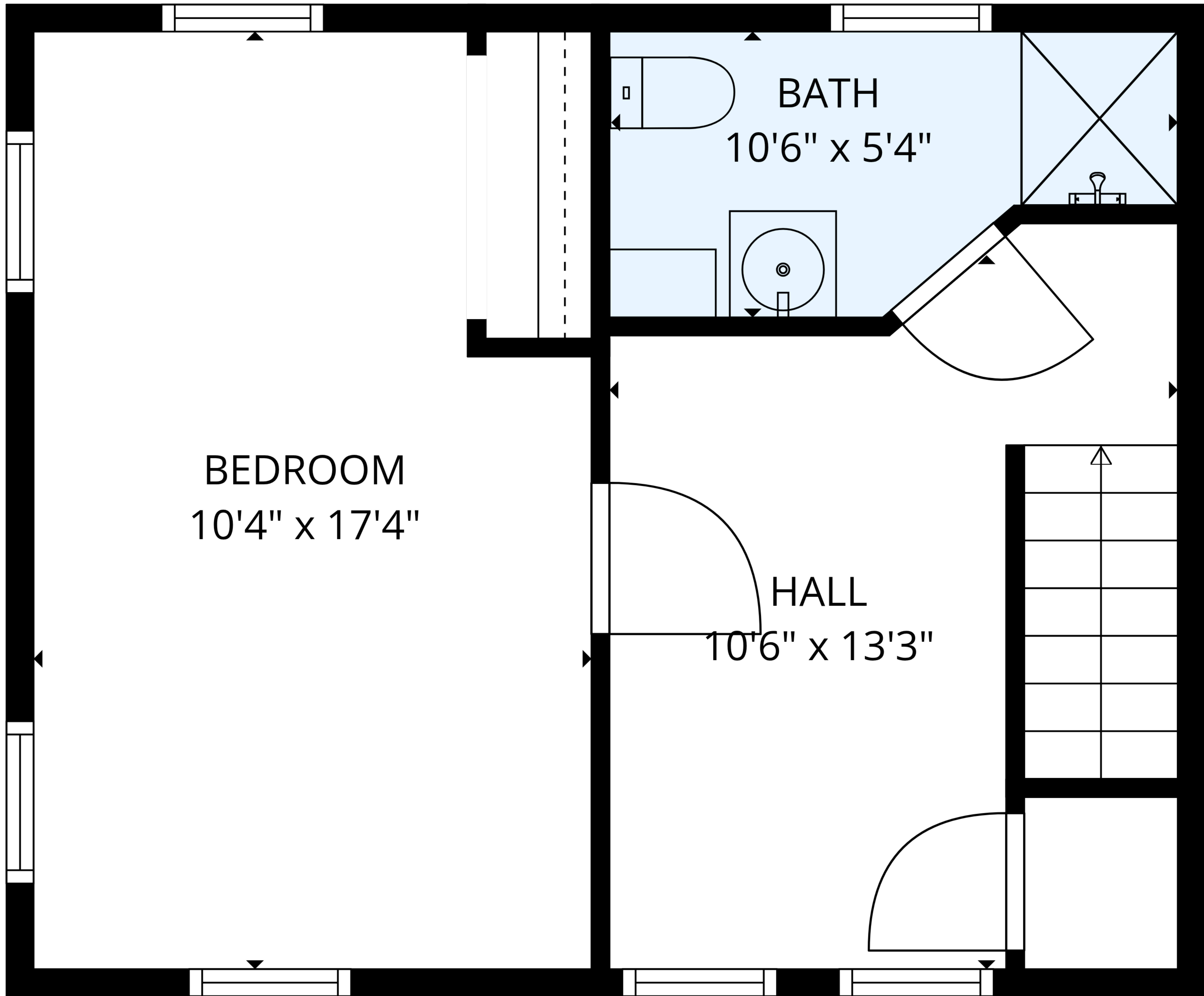
FOYER  
7'5" x 7'4"

**TOTAL: 736 sq. ft**

1st floor: 368 sq. ft, 2nd floor: 368 sq. ft

EXCLUDED AREAS: WALLS: 78 sq. ft

MEASUREMENTS ARE DEEMED RELIABLE BUT ARE NOT GUARANTEED.



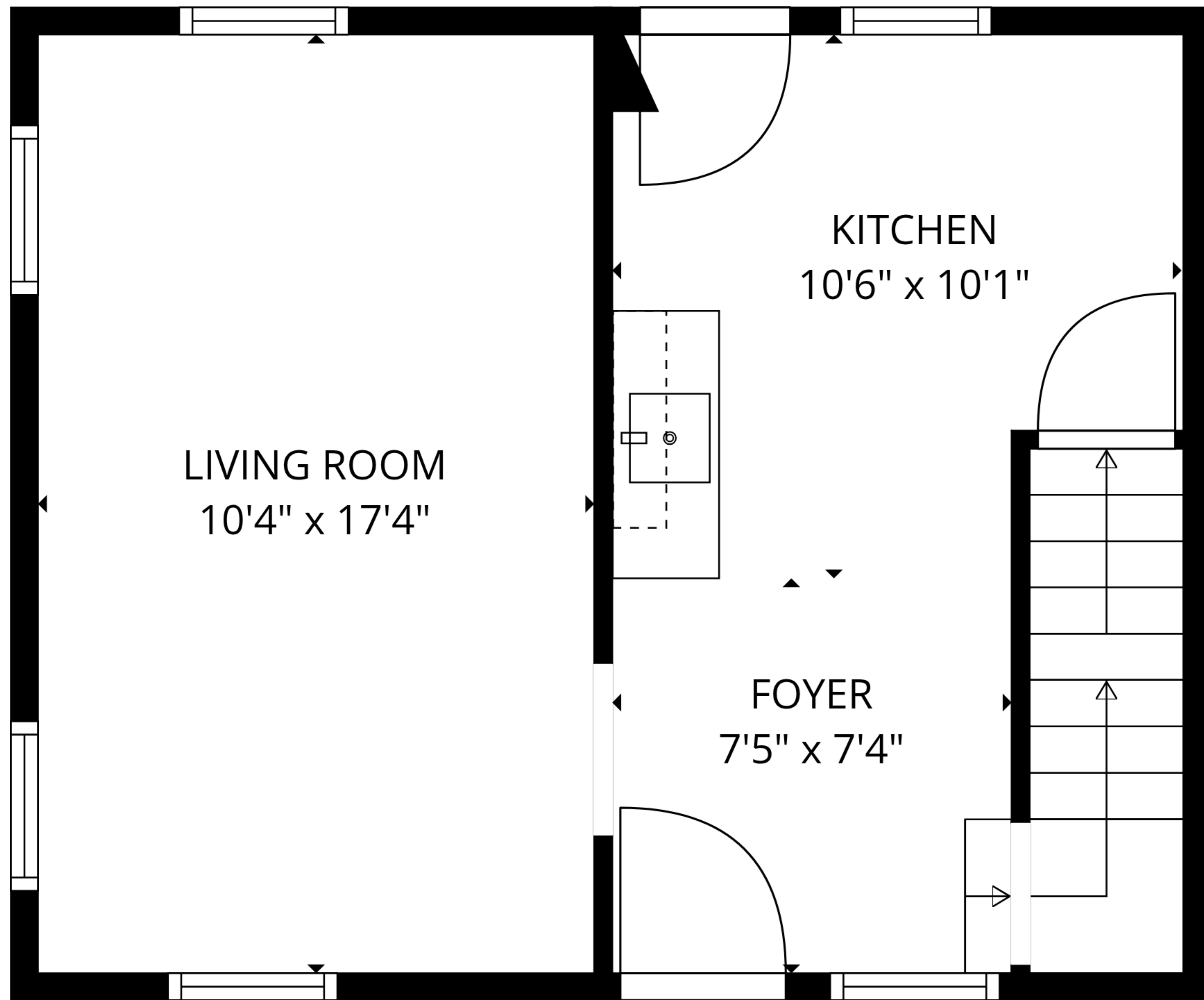
BEDROOM  
10'4" x 17'4"

BATH  
10'6" x 5'4"

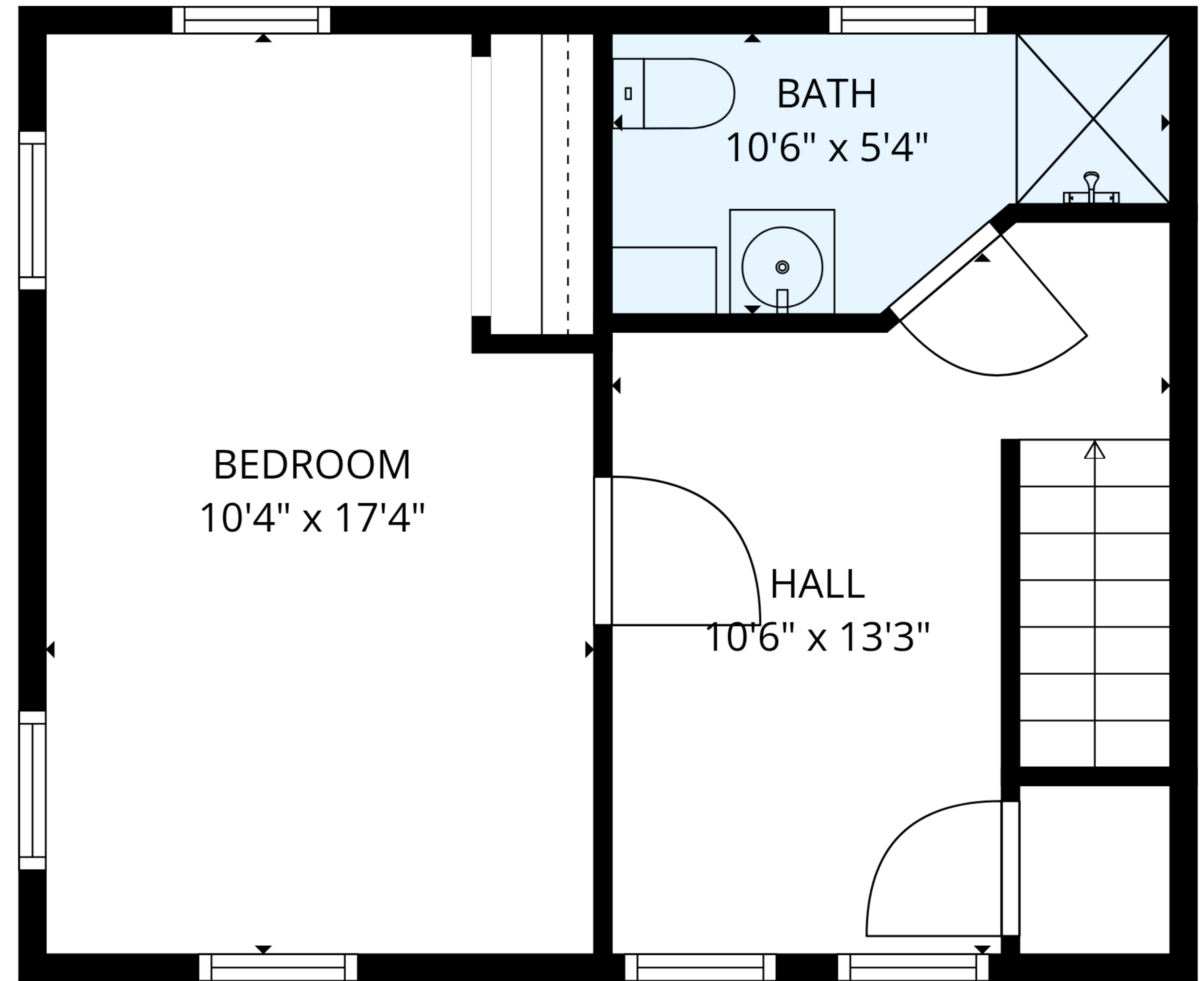
HALL  
10'6" x 13'3"

**TOTAL: 736 sq. ft**  
1st floor: 368 sq. ft, 2nd floor: 368 sq. ft  
EXCLUDED AREAS: WALLS: 78 sq. ft

MEASUREMENTS ARE DEEMED RELIABLE BUT ARE NOT GUARANTEED.



1st floor



2nd floor

**TOTAL: 736 sq. ft**  
 1st floor: 368 sq. ft, 2nd floor: 368 sq. ft  
 EXCLUDED AREAS: WALLS: 78 sq. ft

MEASUREMENTS ARE DEEMED RELIABLE BUT ARE NOT GUARANTEED.