

Home report

312 Monument Road, Elgin, Kane County, Illinois, United States, 60124



Total Area: 3450 sq. ft

Below Ground: 0 sq. ft, Floor 2: 1717 sq. ft, Floor 3: 1733 sq. ft

Excluded: Basement 1653 sq. ft, Garage 582 sq. ft, Open to below 336 sq. ft, Walls: 318 sq. ft

Property summary



Home report

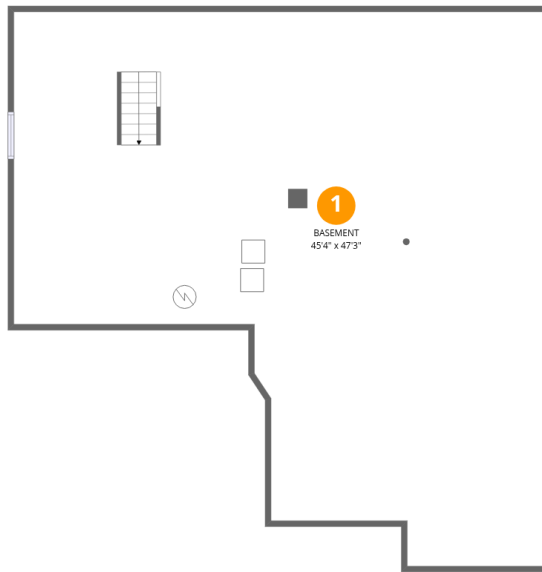
**312 Monument Road, Elgin, Kane County, Illinois, United States,
60124**

 **1**
Half baths

 **1**
Garages

Home report

312 Monument Road, Elgin, Kane County, Illinois, United States, 60124



Room dimensions

Floor 1 Below ground

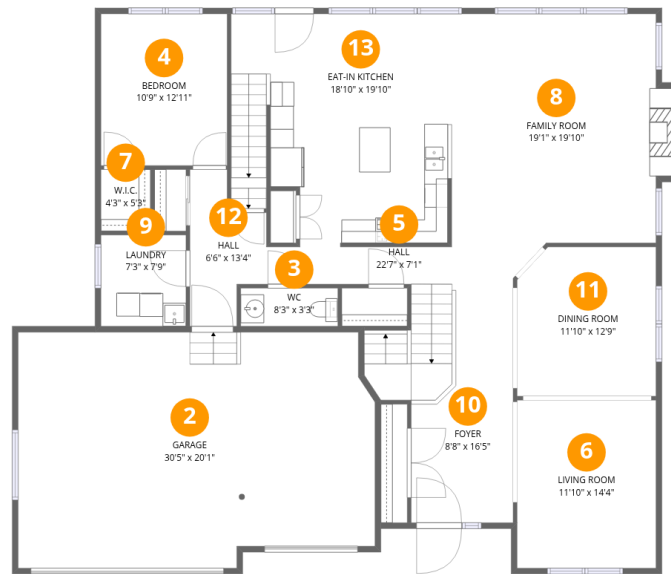
Total:0sqft

Excluded: 1653sqft

#		Max Dimensions	sqft	Included
1	Basement	45'4" x 47'3"	1653 sq. ft	No

Home report

312 Monument Road, Elgin, Kane County, Illinois, United States, 60124



Room dimensions

Floor 2

Total:1717sqft

Excluded: 582sqft

#		Max Dimensions	sqft	Included
2	Garage	30'5" x 20'1"	582 sq. ft	No
3	WC	8'3" x 3'3"	27 sq. ft	Yes
4	Bedroom	10'9" x 12'11"	139 sq. ft	Yes
5	Hall	22'7" x 7'1"	104 sq. ft	Yes
6	Living Room	11'10" x 14'4"	170 sq. ft	Yes
7	W.I.C.	4'3" x 5'3"	22 sq. ft	Yes
8	Family Room	19'1" x 19'10"	355 sq. ft	Yes
9	Laundry	7'3" x 7'9"	56 sq. ft	Yes
10	Foyer	8'8" x 16'5"	165 sq. ft	Yes
11	Dining Room	11'10" x 12'9"	147 sq. ft	Yes
12	Hall	6'6" x 13'4"	66 sq. ft	Yes

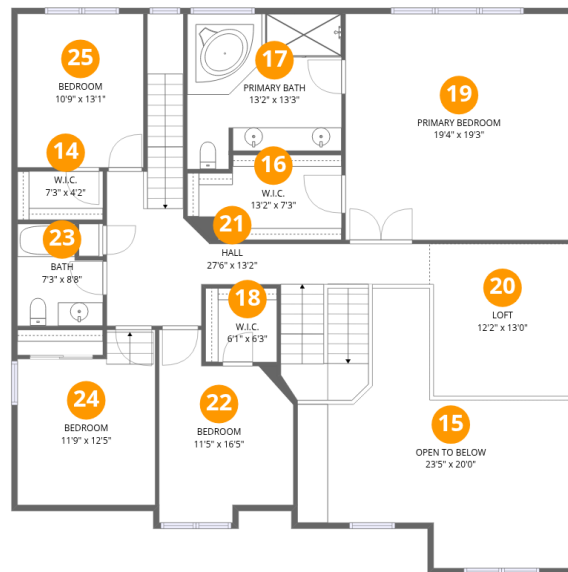
Home report

**312 Monument Road, Elgin, Kane County, Illinois, United States,
60124**

#		Max Dimensions	sqft	Included
13	Eat-in Kitchen	18'10" x 19'10"	346 sq. ft	Yes

Home report

312 Monument Road, Elgin, Kane County, Illinois, United States, 60124



Room dimensions

Floor 3

Total:1733sqft

Excluded: 336sqft

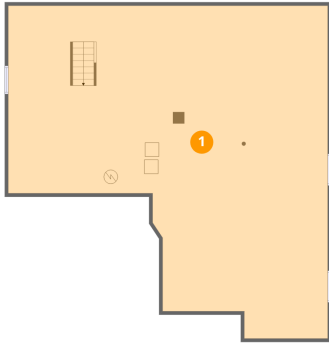
#		Max Dimensions	sqft	Included
14	W.I.C.	7'3" x 4'2"	30 sq. ft	Yes
15	Open To Below	23'5" x 20'0"	336 sq. ft	No
16	W.I.C.	13'2" x 7'3"	87 sq. ft	Yes
17	Primary Bath	13'2" x 13'3"	158 sq. ft	Yes
18	W.I.C.	6'1" x 6'3"	38 sq. ft	Yes
19	Primary Bedroom	19'4" x 19'3"	373 sq. ft	Yes
20	Loft	12'2" x 13'0"	162 sq. ft	Yes
21	Hall	27'6" x 13'2"	270 sq. ft	Yes
22	Bedroom	11'5" x 16'5"	153 sq. ft	Yes
23	Bath	7'3" x 8'8"	56 sq. ft	Yes
24	Bedroom	11'9" x 12'5"	156 sq. ft	Yes

Home report

**312 Monument Road, Elgin, Kane County, Illinois, United States,
60124**

#		Max Dimensions	sqft	Included
25	Bedroom	10'9" x 13'1"	141 sq. ft	Yes

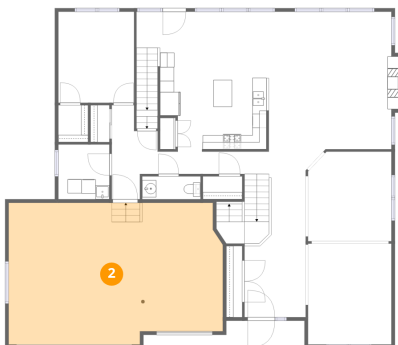
1 Floor 1 - Basement



Max Dimensions: 45'4" x 47'3"
Calculated Area: 1653 sq. ft
Included: No

Heated: Yes
Finished: No
Enclosed: Yes
Contiguous: Yes
Permitted: Yes
Wet space: No
Addition: No
Conversion: No

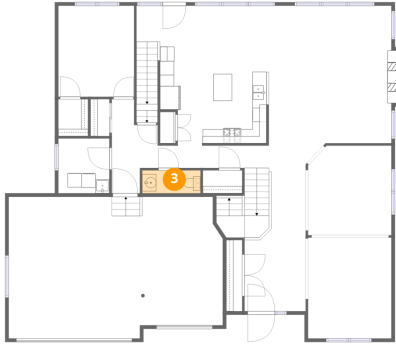
2 Floor 2 - Garage



Max Dimensions: 30'5" x 20'1"
Calculated Area: 582 sq. ft
Included: No

Heated: No
Finished: No
Enclosed: Yes
Contiguous: Yes
Permitted: Yes
Wet space: No
Addition: No
Conversion: No

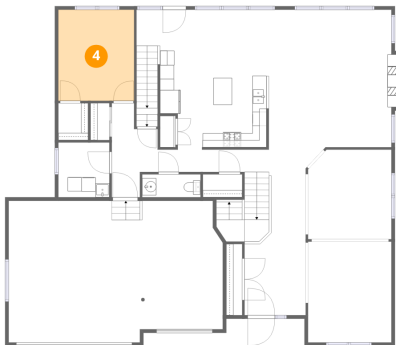
3 Floor 2 - WC



Max Dimensions: 8'3" x 3'3"
Calculated Area: 27 sq. ft
Included: Yes

Heated: Yes
Finished: Yes
Enclosed: Yes
Contiguous: Yes
Permitted: Yes
Wet space: Yes
Addition: No
Conversion: No

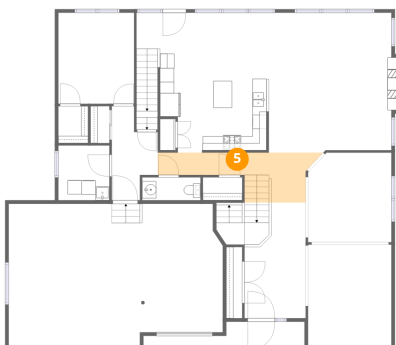
4 Floor 2 - Bedroom



Max Dimensions: 10'9" x 12'11"
Calculated Area: 139 sq. ft
Included: Yes

Heated: Yes
Finished: Yes
Enclosed: Yes
Contiguous: Yes
Permitted: Yes
Wet space: No
Addition: No
Conversion: No

5 Floor 2 - Hall



Max Dimensions: 22'7" x 7'1"
Calculated Area: 104 sq. ft
Included: Yes

Heated: Yes
Finished: Yes
Enclosed: Yes
Contiguous: Yes
Permitted: Yes
Wet space: No
Addition: No
Conversion: No

312 Monument Road, Elgin, Kane County, Illinois, United States, 60124

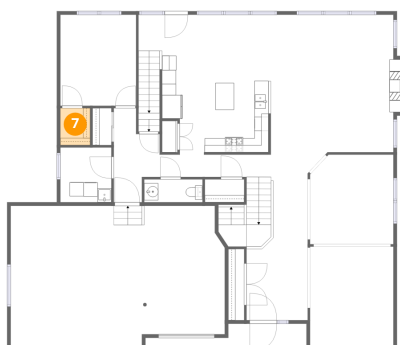
6 Floor 2 - Living Room



Max Dimensions: 11'10" x 14'4"
Calculated Area: 170 sq. ft
Included: Yes

Heated: Yes
Finished: Yes
Enclosed: Yes
Contiguous: Yes
Permitted: Yes
Wet space: No
Addition: No
Conversion: No

7 Floor 2 - W.I.C.



Max Dimensions: 4'3" x 5'3"
Calculated Area: 22 sq. ft
Included: Yes

Heated: Yes
Finished: Yes
Enclosed: Yes
Contiguous: Yes
Permitted: Yes
Wet space: No
Addition: No
Conversion: No

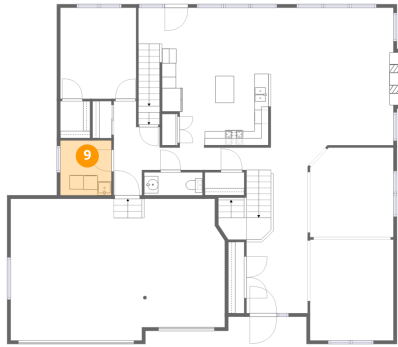
8 Floor 2 - Family Room



Max Dimensions: 19'1" x 19'10"
Calculated Area: 355 sq. ft
Included: Yes

Heated: Yes
Finished: Yes
Enclosed: Yes
Contiguous: Yes
Permitted: Yes
Wet space: No
Addition: No
Conversion: No

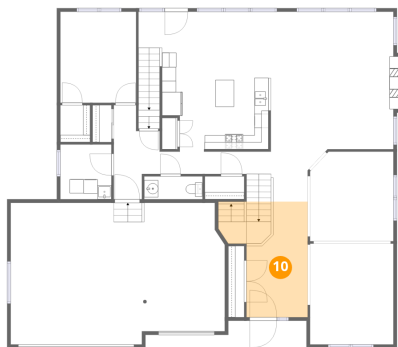
9 Floor 2 - Laundry



Max Dimensions: 7'3" x 7'9"
Calculated Area: 56 sq. ft
Included: Yes

Heated: Yes
Finished: Yes
Enclosed: Yes
Contiguous: Yes
Permitted: Yes
Wet space: No
Addition: No
Conversion: No

10 Floor 2 - Foyer



Max Dimensions: 8'8" x 16'5"
Calculated Area: 165 sq. ft
Included: Yes

Heated: Yes
Finished: Yes
Enclosed: Yes
Contiguous: Yes
Permitted: Yes
Wet space: No
Addition: No
Conversion: No

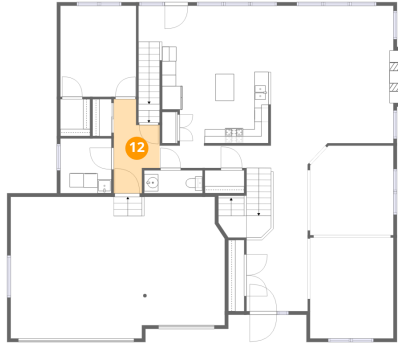
11 Floor 2 - Dining Room



Max Dimensions: 11'10" x 12'9"
Calculated Area: 147 sq. ft
Included: Yes

Heated: Yes
Finished: Yes
Enclosed: Yes
Contiguous: Yes
Permitted: Yes
Wet space: No
Addition: No
Conversion: No

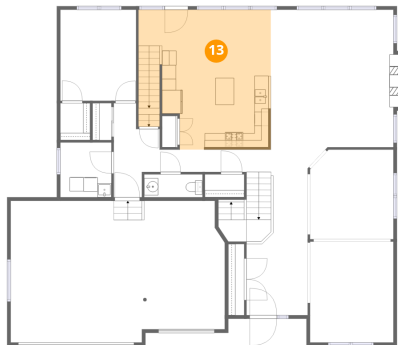
12 Floor 2 - Hall



Max Dimensions: 6'6" x 13'4"
Calculated Area: 66 sq. ft
Included: Yes

Heated: Yes
Finished: Yes
Enclosed: Yes
Contiguous: Yes
Permitted: Yes
Wet space: No
Addition: No
Conversion: No

13 Floor 2 - Eat-in Kitchen



Max Dimensions: 18'10" x 19'10"
Calculated Area: 346 sq. ft
Included: Yes

Heated: Yes
Finished: Yes
Enclosed: Yes
Contiguous: Yes
Permitted: Yes
Wet space: No
Addition: No
Conversion: No

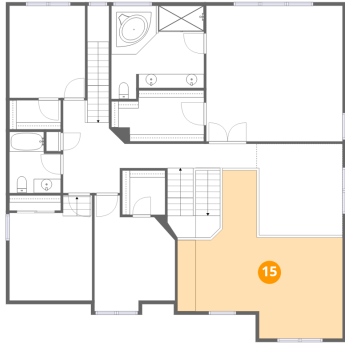
14 Floor 3 - W.I.C.



Max Dimensions: 7'3" x 4'2"
Calculated Area: 30 sq. ft
Included: Yes

Heated: Yes
Finished: Yes
Enclosed: Yes
Contiguous: Yes
Permitted: Yes
Wet space: No
Addition: No
Conversion: No

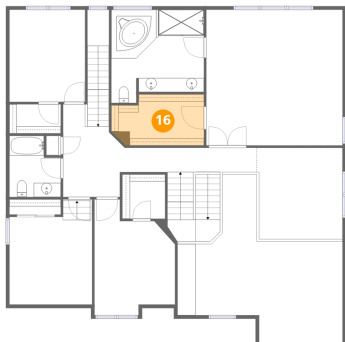
15 Floor 3 - Open To Below



Max Dimensions: 23'5" x 20'0"
Calculated Area: 336 sq. ft
Included: No

Heated: No
Finished: No
Enclosed: No
Contiguous: Yes
Permitted: No
Wet space: No
Addition: No
Conversion: No

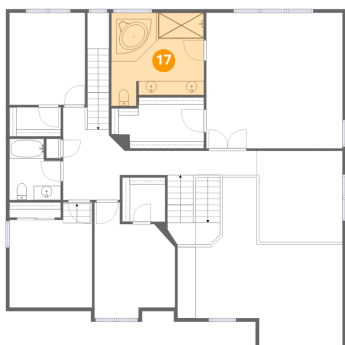
16 Floor 3 - W.I.C.



Max Dimensions: 13'2" x 7'3"
Calculated Area: 87 sq. ft
Included: Yes

Heated: Yes
Finished: Yes
Enclosed: Yes
Contiguous: Yes
Permitted: Yes
Wet space: No
Addition: No
Conversion: No

17 Floor 3 - Primary Bath



Max Dimensions: 13'2" x 13'3"
Calculated Area: 158 sq. ft
Included: Yes

Heated: Yes
Finished: Yes
Enclosed: Yes
Contiguous: Yes
Permitted: Yes
Wet space: Yes
Addition: No
Conversion: No

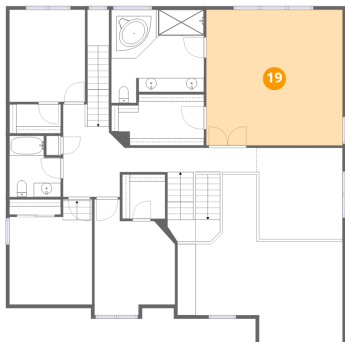
18 Floor 3 - W.I.C.



Max Dimensions: 6'1" x 6'3"
Calculated Area: 38 sq. ft
Included: Yes

Heated: Yes
Finished: Yes
Enclosed: Yes
Contiguous: Yes
Permitted: Yes
Wet space: No
Addition: No
Conversion: No

19 Floor 3 - Primary Bedroom



Max Dimensions: 19'4" x 19'3"
Calculated Area: 373 sq. ft
Included: Yes

Heated: Yes
Finished: Yes
Enclosed: Yes
Contiguous: Yes
Permitted: Yes
Wet space: No
Addition: No
Conversion: No

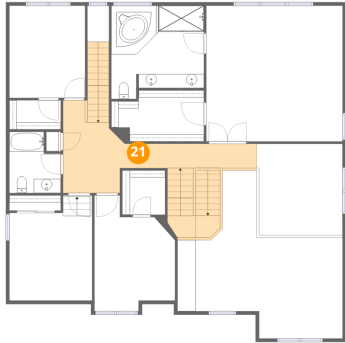
20 Floor 3 - Loft



Max Dimensions: 12'2" x 13'0"
Calculated Area: 162 sq. ft
Included: Yes

Heated: Yes
Finished: Yes
Enclosed: Yes
Contiguous: Yes
Permitted: Yes
Wet space: No
Addition: No
Conversion: No

21 Floor 3 - Hall



Max Dimensions: 27'6" x 13'2"
Calculated Area: 270 sq. ft
Included: Yes

Heated: Yes
Finished: Yes
Enclosed: Yes
Contiguous: Yes
Permitted: Yes
Wet space: No
Addition: No
Conversion: No

22 Floor 3 - Bedroom



Max Dimensions: 11'5" x 16'5"
Calculated Area: 153 sq. ft
Included: Yes

Heated: Yes
Finished: Yes
Enclosed: Yes
Contiguous: Yes
Permitted: Yes
Wet space: No
Addition: No
Conversion: No

23 Floor 3 - Bath

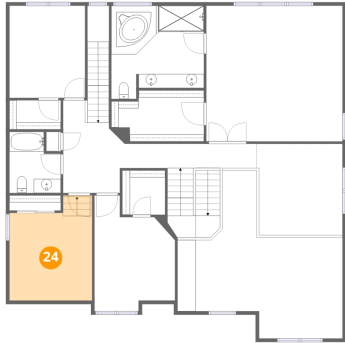


Max Dimensions: 7'3" x 8'8"
Calculated Area: 56 sq. ft
Included: Yes

Heated: Yes
Finished: Yes
Enclosed: Yes
Contiguous: Yes
Permitted: Yes
Wet space: Yes
Addition: No
Conversion: No

312 Monument Road, Elgin, Kane County, Illinois, United States, 60124

24 Floor 3 - Bedroom



Max Dimensions: 11'9" x 12'5"
Calculated Area: 156 sq. ft
Included: Yes

Heated: Yes
Finished: Yes
Enclosed: Yes
Contiguous: Yes
Permitted: Yes
Wet space: No
Addition: No
Conversion: No

25 Floor 3 - Bedroom



Max Dimensions: 10'9" x 13'1"
Calculated Area: 141 sq. ft
Included: Yes

Heated: Yes
Finished: Yes
Enclosed: Yes
Contiguous: Yes
Permitted: Yes
Wet space: No
Addition: No
Conversion: No