

Total Area: 1594 sq. ft

1st Floor: 1594 sq. ft

Excluded: Garage 361 sq. ft, Covered deck 388 sq. ft, Walls: 128 sq. ft

Property summary



Home data report

1225 E Hazelwood St S Dr, Shelbyville, IN, US

 **1**
Half baths

 **1**
Garages

Home data report

1225 E Hazelwood St S Dr, Shelbyville, IN, US



Room dimensions

Floor 1

Total: 1594sqft

Excluded: 749sqft

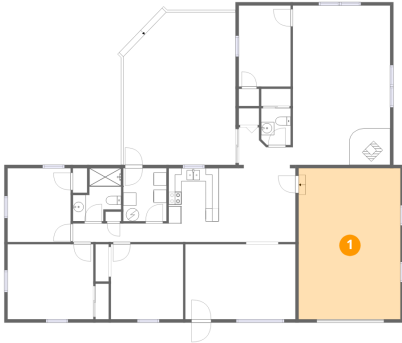
#		Dimensions	sqft	Counted as living area
1	Garage	15'7" x 23'2"	361 sq. ft	No
2	Bedroom	7'11" x 12'5"	99 sq. ft	Yes
3	Entry	8'3" x 6'3"	52 sq. ft	Yes
4	Kitchen	7'8" x 11'4"	86 sq. ft	Yes
5	Bedroom	9'8" x 11'4"	109 sq. ft	Yes
6	Dining Area	11'9" x 11'3"	133 sq. ft	Yes
7	Bath	7'5" x 8'2"	60 sq. ft	Yes
8	Bath	4'6" x 5'7"	25 sq. ft	Yes
9	Hall	14'8" x 2'10"	42 sq. ft	Yes
10	Family Room	14'11" x 24'5"	365 sq. ft	Yes
11	Covered Deck	17'3" x 23'5"	403 sq. ft	No

Home data report

1225 E Hazelwood St S Dr,Shelbyville,IN,US

#		Dimensions	sqft	Counted as living area
12	Bedroom	11'1" x 11'6"	128 sq. ft	Yes
13	Utility	6'7" x 8'2"	54 sq. ft	Yes
14	Primary Bedroom	13'2" x 11'6"	151 sq. ft	Yes
15	Living Room	16'11" x 11'6"	194 sq. ft	Yes

1 Floor 1 - Garage



Dimensions: 15'7" x 23'2"
Area: 361 sq. ft
Counted as living area: No

Heated: No
Finished: No
Enclosed: Yes
Contiguous: Yes
Permitted: Yes
Wet space: No
Addition: No
Conversion: No

2 Floor 1 - Bedroom



Dimensions: 7'11" x 12'5"
Area: 99 sq. ft
Counted as living area: Yes

Heated: Yes
Finished: Yes
Enclosed: Yes
Contiguous: Yes
Permitted: Yes
Wet space: No
Addition: No
Conversion: No

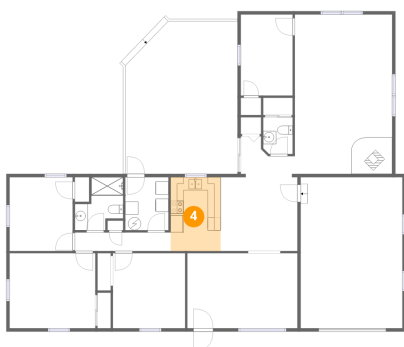
3 Floor 1 - Entry



Dimensions: 8'3" x 6'3"
Area: 52 sq. ft
Counted as living area: Yes

Heated: Yes
Finished: Yes
Enclosed: Yes
Contiguous: Yes
Permitted: Yes
Wet space: No
Addition: No
Conversion: No

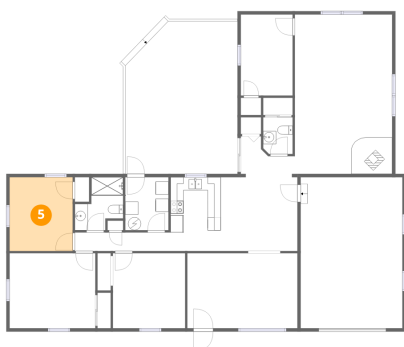
4 Floor 1 - Kitchen



Dimensions: 7'8" x 11'4"
Area: 86 sq. ft
Counted as living area: Yes

Heated: Yes
Finished: Yes
Enclosed: Yes
Contiguous: Yes
Permitted: Yes
Wet space: No
Addition: No
Conversion: No

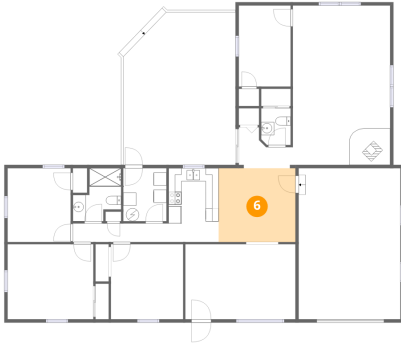
5 Floor 1 - Bedroom



Dimensions: 9'8" x 11'4"
Area: 109 sq. ft
Counted as living area: Yes

Heated: Yes
Finished: Yes
Enclosed: Yes
Contiguous: Yes
Permitted: Yes
Wet space: No
Addition: No
Conversion: No

6 Floor 1 - Dining Area



Dimensions: 11'9" x 11'3"
Area: 133 sq. ft
Counted as living area: Yes

Heated: Yes
Finished: Yes
Enclosed: Yes
Contiguous: Yes
Permitted: Yes
Wet space: No
Addition: No
Conversion: No

7 Floor 1 - Bath



Dimensions: 7'5" x 8'2"
Area: 60 sq. ft
Counted as living area: Yes

Heated: Yes
Finished: Yes
Enclosed: Yes
Contiguous: Yes
Permitted: Yes
Wet space: Yes
Addition: No
Conversion: No

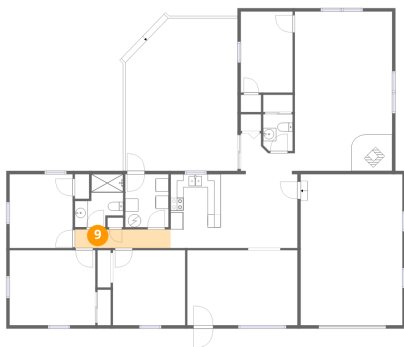
8 Floor 1 - Bath



Dimensions: 4'6" x 5'7"
Area: 25 sq. ft
Counted as living area: Yes

Heated: Yes
Finished: Yes
Enclosed: Yes
Contiguous: Yes
Permitted: Yes
Wet space: Yes
Addition: No
Conversion: No

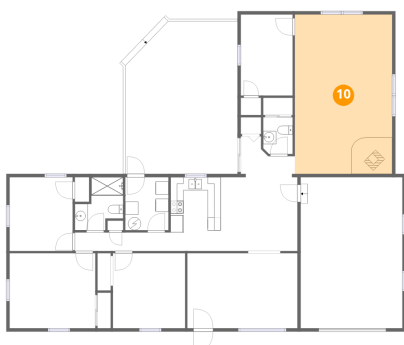
9 Floor 1 - Hall



Dimensions: 14'8" x 2'10"
Area: 42 sq. ft
Counted as living area: Yes

Heated: Yes
Finished: Yes
Enclosed: Yes
Contiguous: Yes
Permitted: Yes
Wet space: No
Addition: No
Conversion: No

10 Floor 1 - Family Room



Dimensions: 14'11" x 24'5"
Area: 365 sq. ft
Counted as living area: Yes

Heated: Yes
Finished: Yes
Enclosed: Yes
Contiguous: Yes
Permitted: Yes
Wet space: No
Addition: No
Conversion: No

11 Floor 1 - Covered Deck



Dimensions: 17'3" x 23'5"
Area: 403 sq. ft
Counted as living area: No

Heated: No
Finished: No
Enclosed: No
Contiguous: Yes
Permitted: Yes
Wet space: No
Addition: No
Conversion: No

12 Floor 1 - Bedroom



Dimensions: 11'1" x 11'6"
Area: 128 sq. ft
Counted as living area: Yes

Heated: Yes
Finished: Yes
Enclosed: Yes
Contiguous: Yes
Permitted: Yes
Wet space: No
Addition: No
Conversion: No

13 Floor 1 - Utility



Dimensions: 6'7" x 8'2"
Area: 54 sq. ft
Counted as living area: Yes

Heated: Yes
Finished: Yes
Enclosed: Yes
Contiguous: Yes
Permitted: Yes
Wet space: No
Addition: No
Conversion: No

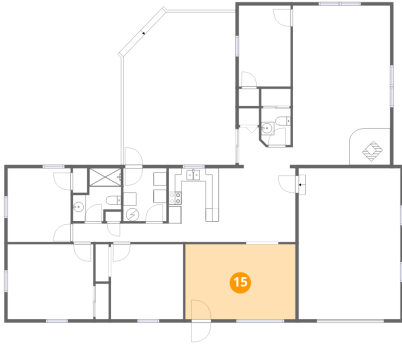
14 Floor 1 - Primary Bedroom



Dimensions: 13'2" x 11'6"
Area: 151 sq. ft
Counted as living area: Yes

Heated: Yes
Finished: Yes
Enclosed: Yes
Contiguous: Yes
Permitted: Yes
Wet space: No
Addition: No
Conversion: No

15 Floor 1 - Living Room



Dimensions: 16'11" x 11'6"
Area: 194 sq. ft
Counted as living area: Yes

Heated: Yes
Finished: Yes
Enclosed: Yes
Contiguous: Yes
Permitted: Yes
Wet space: No
Addition: No
Conversion: No