

Home data report

4208 Indian Creek Court, Granbury, Hood County, Texas, United States, 76049



Total Area: 1764 sq. ft

1st Floor: 1764 sq. ft

Excluded: Garage 453 sq. ft, Screened porch 447 sq. ft, Walls: 168 sq. ft

Property summary

 **1** Floors

 **3** Bedrooms

 **2** Bathrooms

 **1** Garages

Home data report

4208 Indian Creek Court, Granbury, Hood County, Texas, United States, 76049



Room dimensions

Floor 1

Total:1764sqft

Excluded: 900sqft

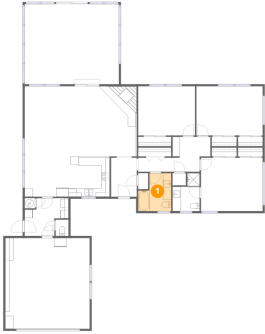
#		Dimensions	sqft	Counted as living area
1	Bath	8'0" x 9'3"	63 sq. ft	Yes
2	Laundry	10'8" x 9'3"	75 sq. ft	Yes
3	Foyer	6'3" x 9'5"	59 sq. ft	Yes
4	Living Room	27'4" x 17'1"	466 sq. ft	Yes
5	Dining Area	7'8" x 9'9"	75 sq. ft	Yes
6	Bath	3'1" x 4'0"	12 sq. ft	Yes
7	Primary Bedroom	15'0" x 13'0"	195 sq. ft	Yes
8	Kitchen	13'0" x 9'9"	127 sq. ft	Yes
9	Bedroom	13'10" x 12'0"	166 sq. ft	Yes
10	Garage	20'6" x 22'1"	453 sq. ft	No
11	Bedroom	16'2" x 12'0"	193 sq. ft	Yes

Home data report

4208 Indian Creek Court, Granbury, Hood County, Texas, United States, 76049

#		Dimensions	sqft	Counted as living area
12	Screened Porch	22'11" x 19'6"	447 sq. ft	No
13	Bath	6'7" x 9'3"	49 sq. ft	Yes
14	Hall	14'11" x 8'6"	96 sq. ft	Yes

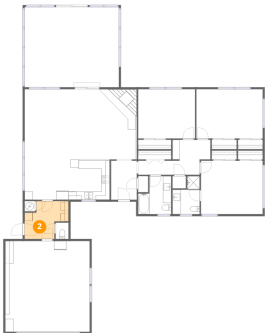
1 Floor 1 - Bath



Dimensions: 8'0" x 9'3"
Area: 63 sq. ft
Counted as living area: Yes

Heated: Yes
Finished: Yes
Enclosed: Yes
Contiguous: Yes
Permitted: Yes
Wet space: Yes
Addition: No
Conversion: No

2 Floor 1 - Laundry



Dimensions: 10'8" x 9'3"
Area: 75 sq. ft
Counted as living area: Yes

Heated: Yes
Finished: Yes
Enclosed: Yes
Contiguous: Yes
Permitted: Yes
Wet space: No
Addition: No
Conversion: No

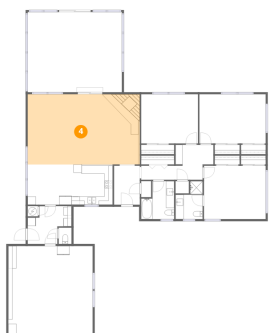
3 Floor 1 - Foyer



Dimensions: 6'3" x 9'5"
Area: 59 sq. ft
Counted as living area: Yes

Heated: Yes
Finished: Yes
Enclosed: Yes
Contiguous: Yes
Permitted: Yes
Wet space: No
Addition: No
Conversion: No

4 Floor 1 - Living Room



Dimensions: 27'4" x 17'1"
Area: 466 sq. ft
Counted as living area: Yes

Heated: Yes
Finished: Yes
Enclosed: Yes
Contiguous: Yes
Permitted: Yes
Wet space: No
Addition: No
Conversion: No

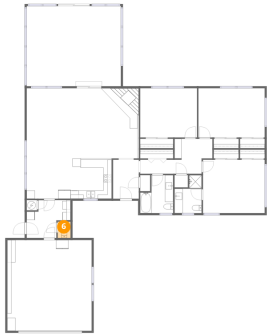
5 Floor 1 - Dining Area



Dimensions: 7'8" x 9'9"
Area: 75 sq. ft
Counted as living area: Yes

Heated: Yes
Finished: Yes
Enclosed: Yes
Contiguous: Yes
Permitted: Yes
Wet space: No
Addition: No
Conversion: No

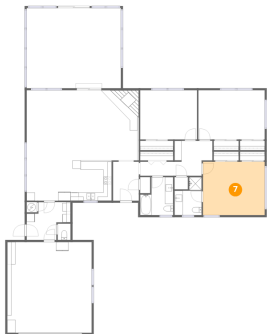
6 Floor 1 - Bath



Dimensions: 3'1" x 4'0"
Area: 12 sq. ft
Counted as living area: Yes

Heated: Yes
Finished: Yes
Enclosed: Yes
Contiguous: Yes
Permitted: Yes
Wet space: Yes
Addition: No
Conversion: No

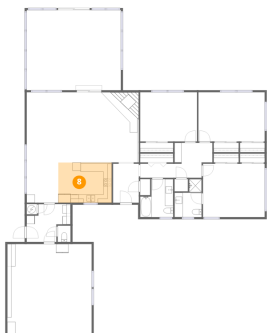
7 Floor 1 - Primary Bedroom



Dimensions: 15'0" x 13'0"
Area: 195 sq. ft
Counted as living area: Yes

Heated: Yes
Finished: Yes
Enclosed: Yes
Contiguous: Yes
Permitted: Yes
Wet space: No
Addition: No
Conversion: No

8 Floor 1 - Kitchen

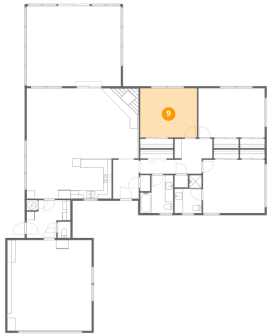


Dimensions: 13'0" x 9'9"
Area: 127 sq. ft
Counted as living area: Yes

Heated: Yes
Finished: Yes
Enclosed: Yes
Contiguous: Yes
Permitted: Yes
Wet space: No
Addition: No
Conversion: No

4208 Indian Creek Court, Granbury, Hood County, Texas, United States, 76049

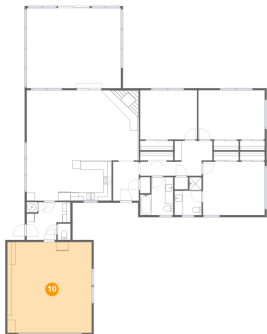
9 Floor 1 - Bedroom



Dimensions: 13'10" x 12'0"
Area: 166 sq. ft
Counted as living area: Yes

Heated: Yes
Finished: Yes
Enclosed: Yes
Contiguous: Yes
Permitted: Yes
Wet space: No
Addition: No
Conversion: No

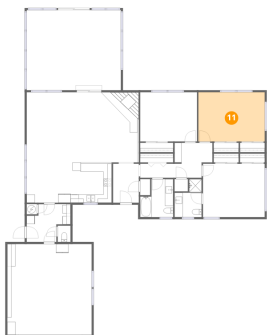
10 Floor 1 - Garage



Dimensions: 20'6" x 22'1"
Area: 453 sq. ft
Counted as living area: No

Heated: No
Finished: No
Enclosed: Yes
Contiguous: Yes
Permitted: Yes
Wet space: No
Addition: No
Conversion: No

11 Floor 1 - Bedroom



Dimensions: 16'2" x 12'0"
Area: 193 sq. ft
Counted as living area: Yes

Heated: Yes
Finished: Yes
Enclosed: Yes
Contiguous: Yes
Permitted: Yes
Wet space: No
Addition: No
Conversion: No

12 Floor 1 - Screened Porch



Dimensions: 22'11" x 19'6"
Area: 447 sq. ft
Counted as living area: No

Heated: No
Finished: No
Enclosed: No
Contiguous: Yes
Permitted: Yes
Wet space: No
Addition: No
Conversion: No

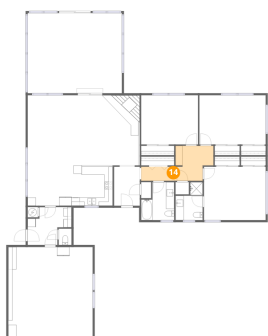
13 Floor 1 - Bath



Dimensions: 6'7" x 9'3"
Area: 49 sq. ft
Counted as living area: Yes

Heated: Yes
Finished: Yes
Enclosed: Yes
Contiguous: Yes
Permitted: Yes
Wet space: Yes
Addition: No
Conversion: No

14 Floor 1 - Hall



Dimensions: 14'11" x 8'6"
Area: 96 sq. ft
Counted as living area: Yes

Heated: Yes
Finished: Yes
Enclosed: Yes
Contiguous: Yes
Permitted: Yes
Wet space: No
Addition: No
Conversion: No