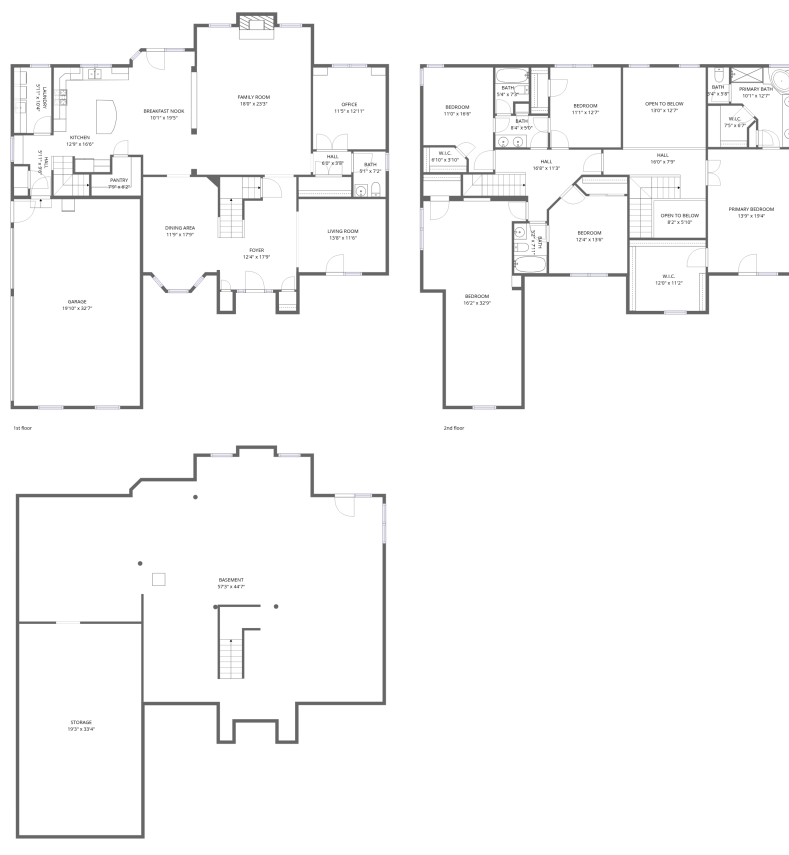


## Home data report

# 6 Bridle Cove, Alexandria, Campbell County, Kentucky, United States, 41001



**Total Area: 4078 sq. ft**

Basement: 0 sq. ft, 1st Floor: 1954 sq. ft, 2nd Floor: 2124 sq. ft

Excluded: Storage 689 sq. ft, Basement 1881 sq. ft, Garage 683 sq. ft, Fireplace 12 sq. ft, Open to below 219 sq. ft

## Property summary

 **3** Floors

 **5** Bedrooms

 **3** Bathrooms

Home data report

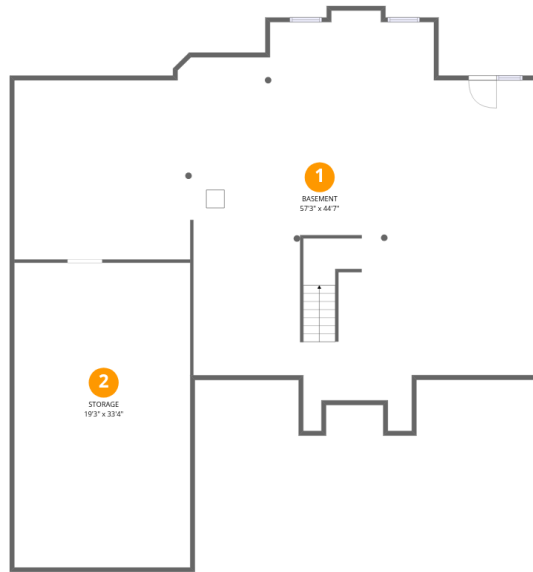
# 6 Bridle Cove, Alexandria, Campbell County, Kentucky, United States, 41001

 **1**  
Half baths

 **1**  
Garages

Home data report

# 6 Bridle Cove, Alexandria, Campbell County, Kentucky, United States, 41001



## Room dimensions

Floor 1 Below grade

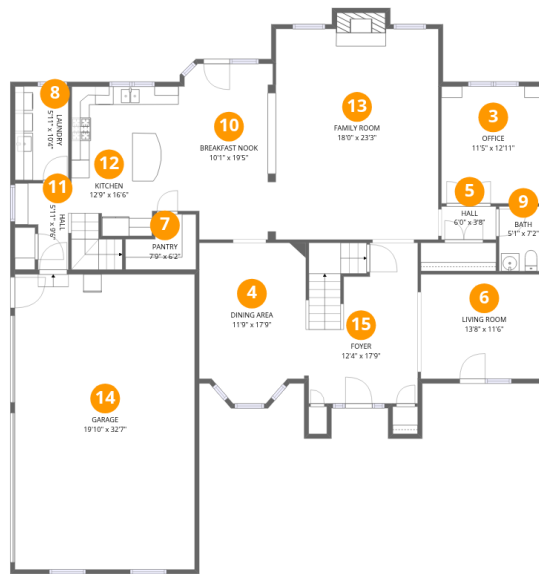
Total:0sqft

Excluded: 2570sqft

#		Dimensions	sqft	Counted as living area
1	Basement	57'3" x 44'7"	2553 sq. ft	No
2	Storage	19'3" x 33'4"	641 sq. ft	No

Home data report

6 Bridle Cove, Alexandria, Campbell County, Kentucky, United States, 41001



Room dimensions

Floor 2

Total:1954sqft

Excluded: 695sqft

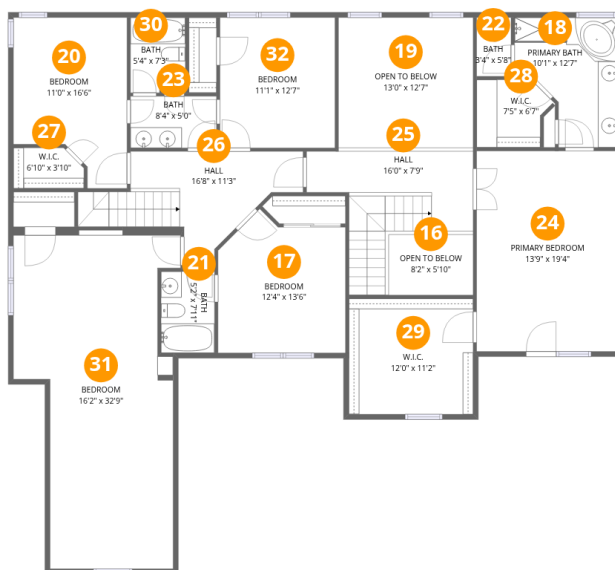
#		Dimensions	sqft	Counted as living area
3	Office	11'5" x 12'11"	147 sq. ft	Yes
4	Dining Area	11'9" x 17'9"	208 sq. ft	Yes
5	Hall	6'0" x 3'8"	22 sq. ft	Yes
6	Living Room	13'8" x 11'6"	157 sq. ft	Yes
7	Pantry	7'9" x 6'2"	48 sq. ft	Yes
8	Laundry	5'11" x 10'4"	61 sq. ft	Yes
9	Bath	5'1" x 7'2"	36 sq. ft	Yes
10	Breakfast Nook	10'1" x 19'5"	196 sq. ft	Yes
11	Hall	5'11" x 9'6"	56 sq. ft	Yes
12	Kitchen	12'9" x 16'6"	211 sq. ft	Yes
13	Family Room	18'0" x 23'3"	418 sq. ft	Yes

Home data report

## 6 Bridle Cove, Alexandria, Campbell County, Kentucky, United States, 41001

#		Dimensions	sqft	Counted as living area
14	Garage	19'10" x 32'7"	646 sq. ft	No
15	Foyer	12'4" x 17'9"	219 sq. ft	Yes

# 6 Bridle Cove, Alexandria, Campbell County, Kentucky, United States, 41001



## Room dimensions

Floor 3

Total:2124sqft

Excluded: 219sqft

#		Dimensions	sqft	Counted as living area
16	Open To Below	8'2" x 5'10"	48 sq. ft	No
17	Bedroom	12'4" x 13'6"	167 sq. ft	Yes
18	Primary Bath	10'1" x 12'7"	126 sq. ft	Yes
19	Open To Below	13'0" x 12'7"	164 sq. ft	No
20	Bedroom	11'0" x 16'6"	181 sq. ft	Yes
21	Bath	5'2" x 7'11"	41 sq. ft	Yes
22	Bath	3'4" x 5'8"	19 sq. ft	Yes
23	Bath	8'4" x 5'0"	42 sq. ft	Yes
24	Primary Bedroom	13'9" x 19'4"	266 sq. ft	Yes
25	Hall	16'0" x 7'9"	124 sq. ft	Yes
26	Hall	16'8" x 11'3"	188 sq. ft	Yes

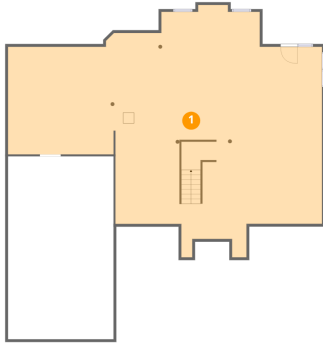
Home data report

## 6 Bridle Cove, Alexandria, Campbell County, Kentucky, United States, 41001

#		Dimensions	sqft	Counted as living area
27	W.I.C.	6'10" x 3'10"	26 sq. ft	Yes
28	W.I.C.	7'5" x 6'7"	49 sq. ft	Yes
29	W.I.C.	12'0" x 11'2"	135 sq. ft	Yes
30	Bath	5'4" x 7'3"	39 sq. ft	Yes
31	Bedroom	16'2" x 32'9"	528 sq. ft	Yes
32	Bedroom	11'1" x 12'7"	140 sq. ft	Yes

# 6 Bridle Cove, Alexandria, Campbell County, Kentucky, United States, 41001

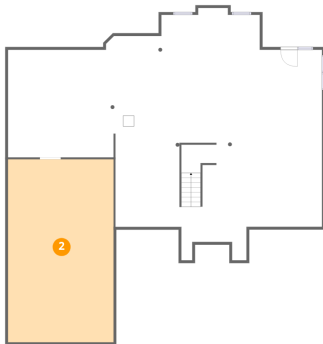
## 1 Floor 1 - Basement



Dimensions: 57'3" x 44'7"  
Area: 2553 sq. ft  
Counted as living area: No

Heated: Yes  
Finished: No  
Enclosed: Yes  
Contiguous: Yes  
Permitted: Yes  
Wet space: No  
Addition: No  
Conversion: No

## 2 Floor 1 - Storage



Dimensions: 19'3" x 33'4"  
Area: 641 sq. ft  
Counted as living area: No

Heated: No  
Finished: No  
Enclosed: No  
Contiguous: Yes  
Permitted: Yes  
Wet space: No  
Addition: No  
Conversion: No

# 6 Bridle Cove, Alexandria, Campbell County, Kentucky, United States, 41001

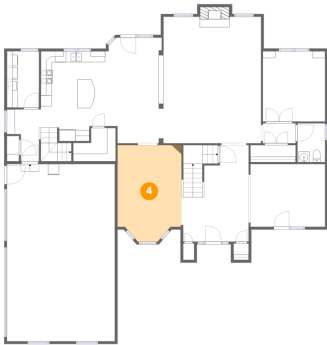
## 3 Floor 2 - Office



Dimensions: 11'5" x 12'11"  
Area: 147 sq. ft  
Counted as living area: Yes

Heated: Yes  
Finished: Yes  
Enclosed: Yes  
Contiguous: Yes  
Permitted: Yes  
Wet space: No  
Addition: No  
Conversion: No

## 4 Floor 2 - Dining Area



Dimensions: 11'9" x 17'9"  
Area: 208 sq. ft  
Counted as living area: Yes

Heated: Yes  
Finished: Yes  
Enclosed: Yes  
Contiguous: Yes  
Permitted: Yes  
Wet space: No  
Addition: No  
Conversion: No

## 5 Floor 2 - Hall

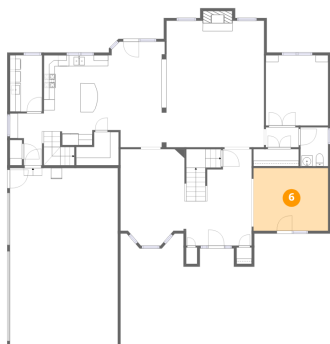


Dimensions: 6'0" x 3'8"  
Area: 22 sq. ft  
Counted as living area: Yes

Heated: Yes  
Finished: Yes  
Enclosed: Yes  
Contiguous: Yes  
Permitted: Yes  
Wet space: No  
Addition: No  
Conversion: No

# 6 Bridle Cove, Alexandria, Campbell County, Kentucky, United States, 41001

## 6 Floor 2 - Living Room



Dimensions: 13'8" x 11'6"  
Area: 157 sq. ft  
Counted as living area: Yes

Heated: Yes  
Finished: Yes  
Enclosed: Yes  
Contiguous: Yes  
Permitted: Yes  
Wet space: No  
Addition: No  
Conversion: No

## 7 Floor 2 - Pantry



Dimensions: 7'9" x 6'2"  
Area: 48 sq. ft  
Counted as living area: Yes

Heated: Yes  
Finished: Yes  
Enclosed: Yes  
Contiguous: Yes  
Permitted: Yes  
Wet space: No  
Addition: No  
Conversion: No

## 8 Floor 2 - Laundry



Dimensions: 5'11" x 10'4"  
Area: 61 sq. ft  
Counted as living area: Yes

Heated: Yes  
Finished: Yes  
Enclosed: Yes  
Contiguous: Yes  
Permitted: Yes  
Wet space: No  
Addition: No  
Conversion: No

# 6 Bridle Cove, Alexandria, Campbell County, Kentucky, United States, 41001

## 9 Floor 2 - Bath



Dimensions: 5'1" x 7'2"  
Area: 36 sq. ft  
Counted as living area: Yes

Heated: Yes  
Finished: Yes  
Enclosed: Yes  
Contiguous: Yes  
Permitted: Yes  
Wet space: Yes  
Addition: No  
Conversion: No

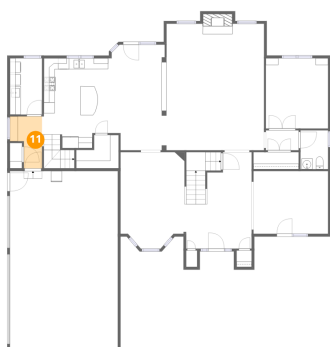
## 10 Floor 2 - Breakfast Nook



Dimensions: 10'1" x 19'5"  
Area: 196 sq. ft  
Counted as living area: Yes

Heated: Yes  
Finished: Yes  
Enclosed: Yes  
Contiguous: Yes  
Permitted: Yes  
Wet space: No  
Addition: No  
Conversion: No

## 11 Floor 2 - Hall



Dimensions: 5'11" x 9'6"  
Area: 56 sq. ft  
Counted as living area: Yes

Heated: Yes  
Finished: Yes  
Enclosed: Yes  
Contiguous: Yes  
Permitted: Yes  
Wet space: No  
Addition: No  
Conversion: No

# 6 Bridle Cove, Alexandria, Campbell County, Kentucky, United States, 41001

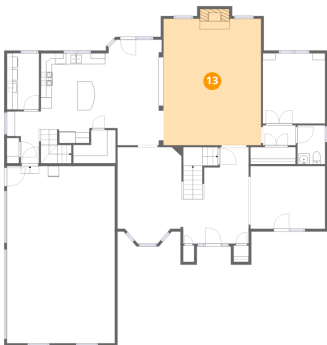
## 12 Floor 2 - Kitchen



Dimensions: 12'9" x 16'6"  
Area: 211 sq. ft  
Counted as living area: Yes

Heated: Yes  
Finished: Yes  
Enclosed: Yes  
Contiguous: Yes  
Permitted: Yes  
Wet space: No  
Addition: No  
Conversion: No

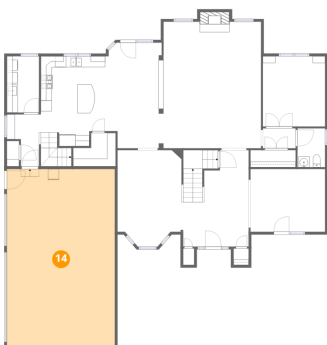
## 13 Floor 2 - Family Room



Dimensions: 18'0" x 23'3"  
Area: 418 sq. ft  
Counted as living area: Yes

Heated: Yes  
Finished: Yes  
Enclosed: Yes  
Contiguous: Yes  
Permitted: Yes  
Wet space: No  
Addition: No  
Conversion: No

## 14 Floor 2 - Garage

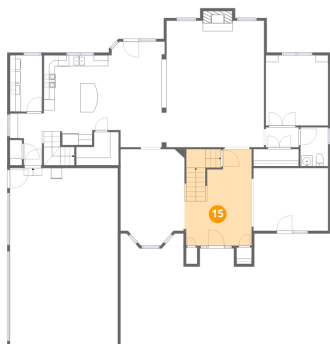


Dimensions: 19'10" x 32'7"  
Area: 646 sq. ft  
Counted as living area: No

Heated: No  
Finished: No  
Enclosed: Yes  
Contiguous: Yes  
Permitted: Yes  
Wet space: No  
Addition: No  
Conversion: No

# 6 Bridle Cove, Alexandria, Campbell County, Kentucky, United States, 41001

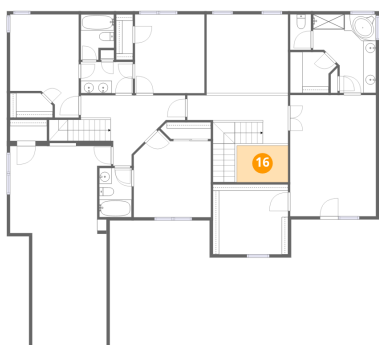
## 15 Floor 2 - Foyer



Dimensions: 12'4" x 17'9"  
Area: 219 sq. ft  
Counted as living area: Yes

Heated: Yes  
Finished: Yes  
Enclosed: Yes  
Contiguous: Yes  
Permitted: Yes  
Wet space: No  
Addition: No  
Conversion: No

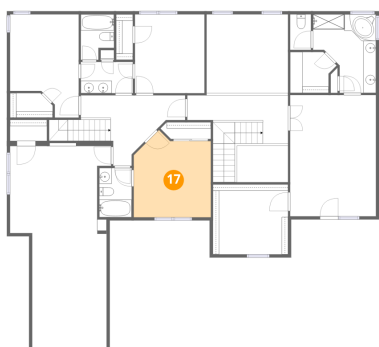
## 16 Floor 3 - Open To Below



Dimensions: 8'2" x 5'10"  
Area: 48 sq. ft  
Counted as living area: No

Heated: No  
Finished: Yes  
Enclosed: No  
Contiguous: Yes  
Permitted: No  
Wet space: No  
Addition: No  
Conversion: No

## 17 Floor 3 - Bedroom

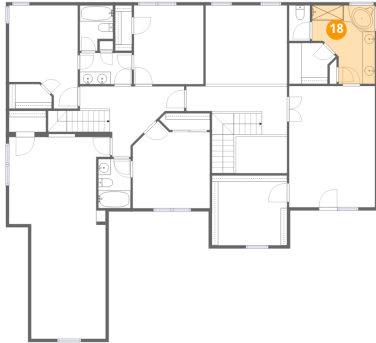


Dimensions: 12'4" x 13'6"  
Area: 167 sq. ft  
Counted as living area: Yes

Heated: Yes  
Finished: Yes  
Enclosed: Yes  
Contiguous: Yes  
Permitted: Yes  
Wet space: No  
Addition: No  
Conversion: No

# 6 Bridle Cove, Alexandria, Campbell County, Kentucky, United States, 41001

## 18 Floor 3 - Primary Bath



Dimensions: 10'1" x 12'7"  
Area: 126 sq. ft  
Counted as living area: Yes

Heated: Yes  
Finished: Yes  
Enclosed: Yes  
Contiguous: Yes  
Permitted: Yes  
Wet space: Yes  
Addition: No  
Conversion: No

## 19 Floor 3 - Open To Below



Dimensions: 13'0" x 12'7"  
Area: 164 sq. ft  
Counted as living area: No

Heated: No  
Finished: Yes  
Enclosed: No  
Contiguous: Yes  
Permitted: No  
Wet space: No  
Addition: No  
Conversion: No

## 20 Floor 3 - Bedroom



Dimensions: 11'0" x 16'6"  
Area: 181 sq. ft  
Counted as living area: Yes

Heated: Yes  
Finished: Yes  
Enclosed: Yes  
Contiguous: Yes  
Permitted: Yes  
Wet space: No  
Addition: No  
Conversion: No

# 6 Bridle Cove, Alexandria, Campbell County, Kentucky, United States, 41001

## 21 Floor 3 - Bath



Dimensions: 5'2" x 7'11"  
Area: 41 sq. ft  
Counted as living area: Yes

Heated: Yes  
Finished: Yes  
Enclosed: Yes  
Contiguous: Yes  
Permitted: Yes  
Wet space: Yes  
Addition: No  
Conversion: No

## 22 Floor 3 - Bath



Dimensions: 3'4" x 5'8"  
Area: 19 sq. ft  
Counted as living area: Yes

Heated: Yes  
Finished: Yes  
Enclosed: Yes  
Contiguous: Yes  
Permitted: Yes  
Wet space: Yes  
Addition: No  
Conversion: No

## 23 Floor 3 - Bath

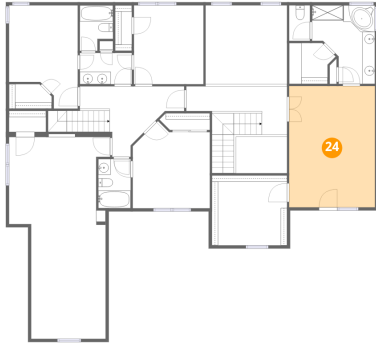


Dimensions: 8'4" x 5'0"  
Area: 42 sq. ft  
Counted as living area: Yes

Heated: Yes  
Finished: Yes  
Enclosed: Yes  
Contiguous: Yes  
Permitted: Yes  
Wet space: Yes  
Addition: No  
Conversion: No

# 6 Bridle Cove, Alexandria, Campbell County, Kentucky, United States, 41001

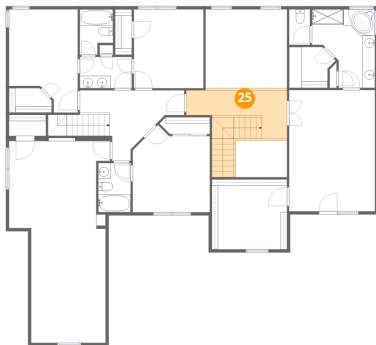
## 24 Floor 3 - Primary Bedroom



Dimensions: 13'9" x 19'4"  
Area: 266 sq. ft  
Counted as living area: Yes

Heated: Yes  
Finished: Yes  
Enclosed: Yes  
Contiguous: Yes  
Permitted: Yes  
Wet space: No  
Addition: No  
Conversion: No

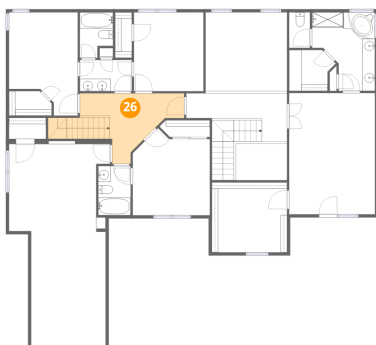
## 25 Floor 3 - Hall



Dimensions: 16'0" x 7'9"  
Area: 124 sq. ft  
Counted as living area: Yes

Heated: Yes  
Finished: Yes  
Enclosed: Yes  
Contiguous: Yes  
Permitted: Yes  
Wet space: No  
Addition: No  
Conversion: No

## 26 Floor 3 - Hall



Dimensions: 16'8" x 11'3"  
Area: 188 sq. ft  
Counted as living area: Yes

Heated: Yes  
Finished: Yes  
Enclosed: Yes  
Contiguous: Yes  
Permitted: Yes  
Wet space: No  
Addition: No  
Conversion: No

# 6 Bridle Cove, Alexandria, Campbell County, Kentucky, United States, 41001

## 27 Floor 3 - W.I.C.



Dimensions: 6'10" x 3'10"  
Area: 26 sq. ft  
Counted as living area: Yes

Heated: Yes  
Finished: Yes  
Enclosed: Yes  
Contiguous: Yes  
Permitted: Yes  
Wet space: No  
Addition: No  
Conversion: No

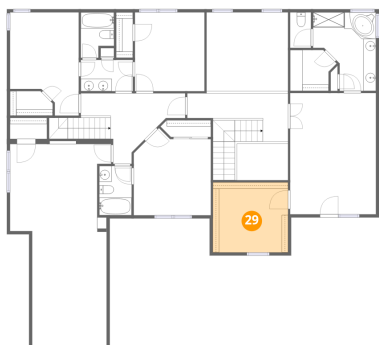
## 28 Floor 3 - W.I.C.



Dimensions: 7'5" x 6'7"  
Area: 49 sq. ft  
Counted as living area: Yes

Heated: Yes  
Finished: Yes  
Enclosed: Yes  
Contiguous: Yes  
Permitted: Yes  
Wet space: No  
Addition: No  
Conversion: No

## 29 Floor 3 - W.I.C.

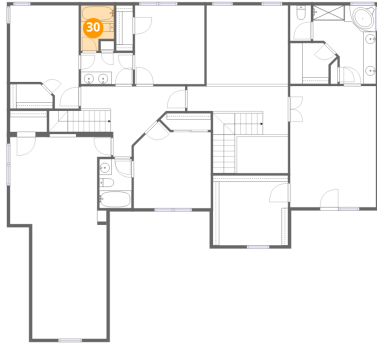


Dimensions: 12'0" x 11'2"  
Area: 135 sq. ft  
Counted as living area: Yes

Heated: Yes  
Finished: Yes  
Enclosed: Yes  
Contiguous: Yes  
Permitted: Yes  
Wet space: No  
Addition: No  
Conversion: No

# 6 Bridle Cove, Alexandria, Campbell County, Kentucky, United States, 41001

## 30 Floor 3 - Bath



Dimensions: 5'4" x 7'3"  
Area: 39 sq. ft  
Counted as living area: Yes

Heated: Yes  
Finished: Yes  
Enclosed: Yes  
Contiguous: Yes  
Permitted: Yes  
Wet space: Yes  
Addition: No  
Conversion: No

## 31 Floor 3 - Bedroom



Dimensions: 16'2" x 32'9"  
Area: 528 sq. ft  
Counted as living area: Yes

Heated: Yes  
Finished: Yes  
Enclosed: Yes  
Contiguous: Yes  
Permitted: Yes  
Wet space: No  
Addition: No  
Conversion: No

## 32 Floor 3 - Bedroom



Dimensions: 11'1" x 12'7"  
Area: 140 sq. ft  
Counted as living area: Yes

Heated: Yes  
Finished: Yes  
Enclosed: Yes  
Contiguous: Yes  
Permitted: Yes  
Wet space: No  
Addition: No  
Conversion: No