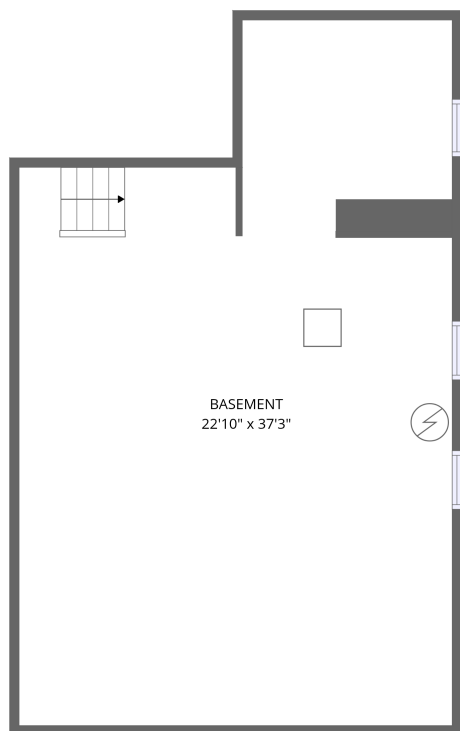
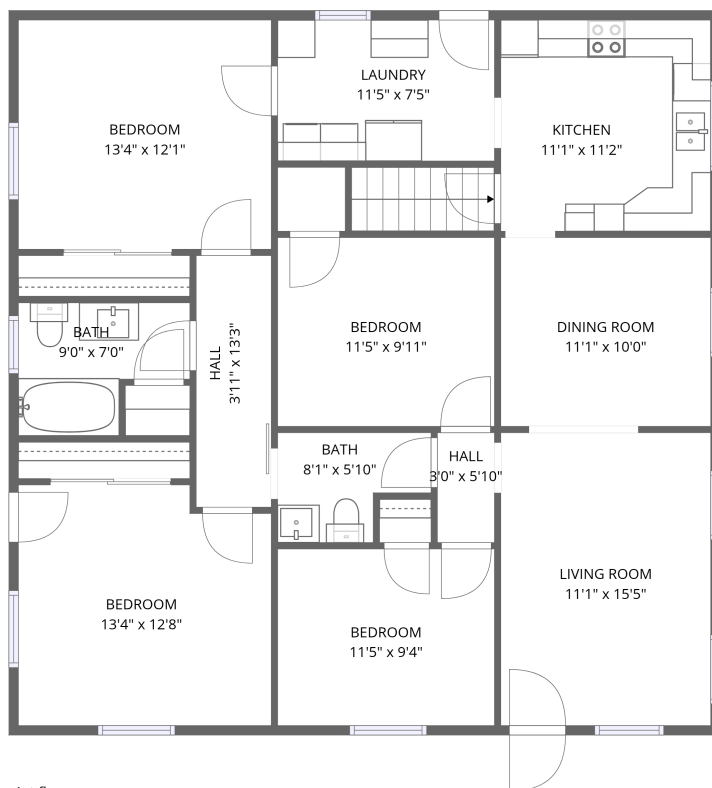


Home data report

200 Montview Avenue, Rocky Mount, Franklin County, Virginia,
United States, 24151



Basement



1st floor


Total Area: 2121 sq. ft

Basement: 760 sq. ft, 1st Floor: 1361 sq. ft

Excluded: Walls: 136 sq. ft

Property summary

 **2**
Floors

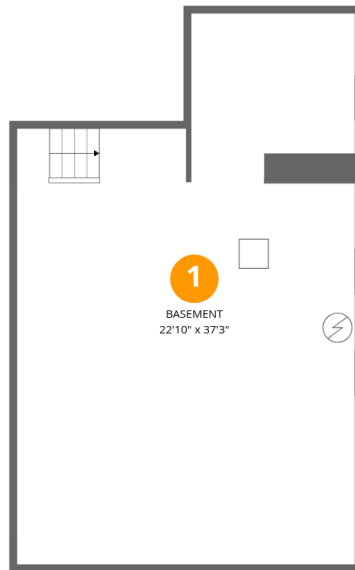
 **4**
Bedrooms

 **1**
Bathrooms

 **1**
Half baths

Home data report

200 Montview Avenue, Rocky Mount, Franklin County, Virginia,
United States, 24151



Room dimensions

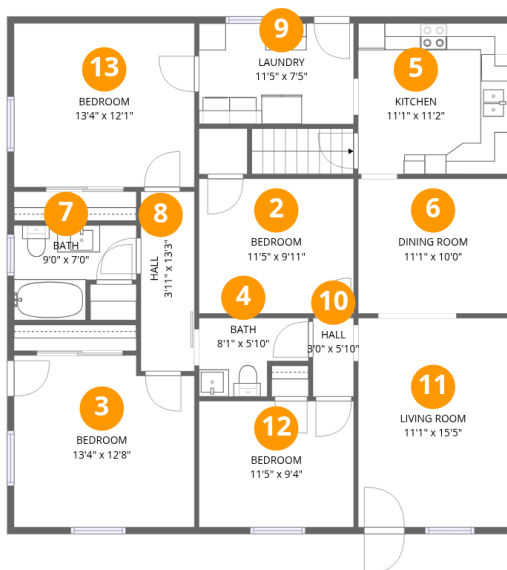
Floor 1 Below grade

Total:760sqft Excluded: 0sqft

#		Dimensions	sqft	Counted as living area
1	Basement	22'10" x 37'3"	756 sq. ft	Yes

Home data report

200 Montview Avenue, Rocky Mount, Franklin County, Virginia,
United States, 24151



Room dimensions

Floor 2

Total:1361sqft Excluded: 0sqft

#		Dimensions	sqft	Counted as living area
2	Bedroom	11'5" x 9'11"	114 sq. ft	Yes
3	Bedroom	13'4" x 12'8"	163 sq. ft	Yes
4	Bath	8'1" x 5'10"	39 sq. ft	Yes
5	Kitchen	11'1" x 11'2"	124 sq. ft	Yes
6	Dining Room	11'1" x 10'0"	110 sq. ft	Yes
7	Bath	9'0" x 7'0"	52 sq. ft	Yes
8	Hall	3'11" x 13'3"	53 sq. ft	Yes
9	Laundry	11'5" x 7'5"	85 sq. ft	Yes
10	Hall	3'0" x 5'10"	17 sq. ft	Yes
11	Living Room	11'1" x 15'5"	171 sq. ft	Yes
12	Bedroom	11'5" x 9'4"	107 sq. ft	Yes

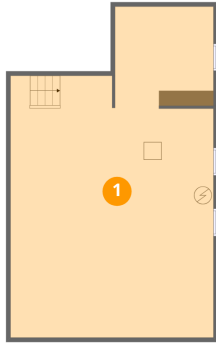
Home data report

**200 Montview Avenue, Rocky Mount, Franklin County, Virginia,
United States, 24151**

#		Dimensions	sqft	Counted as living area
13	Bedroom	13'4" x 12'1"	162 sq. ft	Yes

200 Montview Avenue, Rocky Mount, Franklin County, Virginia,
United States, 24151

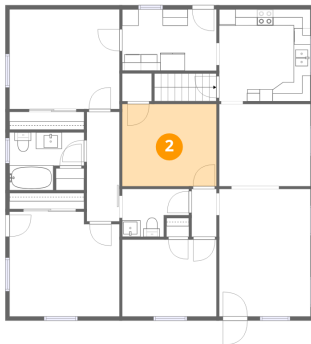
1 Floor 1 - Basement



Dimensions: 22'10" x 37'3"
Area: 756 sq. ft
Counted as living area: No

Heated: Yes
Finished: Yes
Enclosed: Yes
Contiguous: No
Permitted: Yes
Wet space: No
Addition: No
Conversion: No

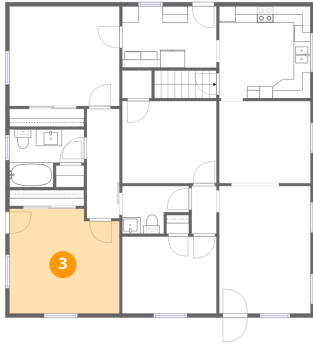
2 Floor 2 - Bedroom



Dimensions: 11'5" x 9'11"
Area: 114 sq. ft
Counted as living area: Yes

Heated: Yes
Finished: Yes
Enclosed: Yes
Contiguous: Yes
Permitted: Yes
Wet space: No
Addition: No
Conversion: No

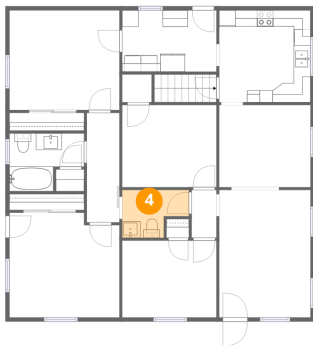
3 Floor 2 - Bedroom



Dimensions: 13'4" x 12'8"
Area: 163 sq. ft
Counted as living area: Yes

Heated: Yes
Finished: Yes
Enclosed: Yes
Contiguous: Yes
Permitted: Yes
Wet space: No
Addition: No
Conversion: No

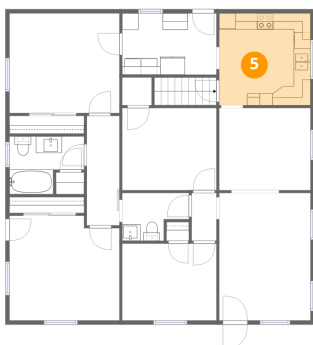
4 Floor 2 - Bath



Dimensions: 8'1" x 5'10"
Area: 39 sq. ft
Counted as living area: Yes

Heated: Yes
Finished: Yes
Enclosed: Yes
Contiguous: Yes
Permitted: Yes
Wet space: Yes
Addition: No
Conversion: No

5 Floor 2 - Kitchen



Dimensions: 11'1" x 11'2"
Area: 124 sq. ft
Counted as living area: Yes

Heated: Yes
Finished: Yes
Enclosed: Yes
Contiguous: Yes
Permitted: Yes
Wet space: No
Addition: No
Conversion: No

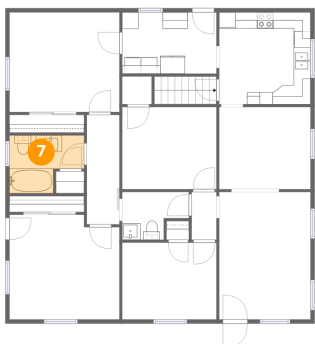
6 Floor 2 - Dining Room



Dimensions: 11'1" x 10'0"
Area: 110 sq. ft
Counted as living area: Yes

Heated: Yes
Finished: Yes
Enclosed: Yes
Contiguous: Yes
Permitted: Yes
Wet space: No
Addition: No
Conversion: No

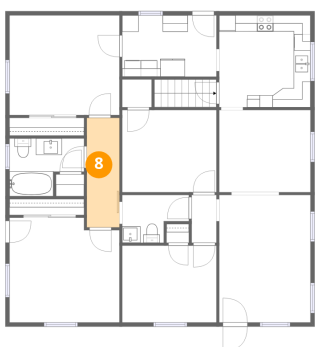
7 Floor 2 - Bath



Dimensions: 9'0" x 7'0"
Area: 52 sq. ft
Counted as living area: Yes

Heated: Yes
Finished: Yes
Enclosed: Yes
Contiguous: Yes
Permitted: Yes
Wet space: Yes
Addition: No
Conversion: No

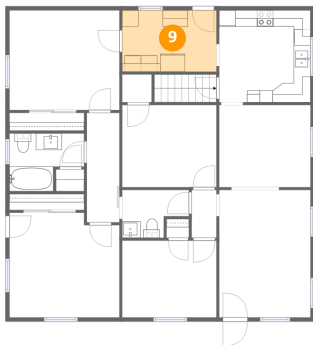
8 Floor 2 - Hall



Dimensions: 3'11" x 13'3"
Area: 53 sq. ft
Counted as living area: Yes

Heated: Yes
Finished: Yes
Enclosed: Yes
Contiguous: Yes
Permitted: Yes
Wet space: No
Addition: No
Conversion: No

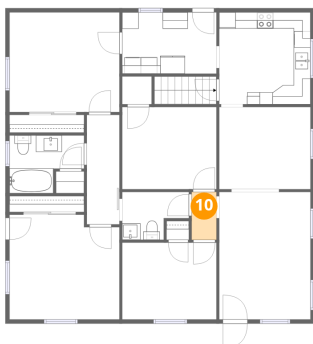
9 Floor 2 - Laundry



Dimensions: 11'5" x 7'5"
Area: 85 sq. ft
Counted as living area: Yes

Heated: Yes
Finished: Yes
Enclosed: Yes
Contiguous: Yes
Permitted: Yes
Wet space: No
Addition: No
Conversion: No

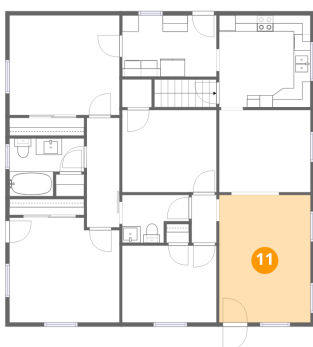
10 Floor 2 - Hall



Dimensions: 3'0" x 5'10"
Area: 17 sq. ft
Counted as living area: Yes

Heated: Yes
Finished: Yes
Enclosed: Yes
Contiguous: Yes
Permitted: Yes
Wet space: No
Addition: No
Conversion: No

11 Floor 2 - Living Room

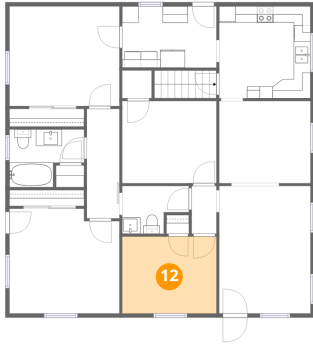


Dimensions: 11'1" x 15'5"
Area: 171 sq. ft
Counted as living area: Yes

Heated: Yes
Finished: Yes
Enclosed: Yes
Contiguous: Yes
Permitted: Yes
Wet space: No
Addition: No
Conversion: No

200 Montview Avenue, Rocky Mount, Franklin County, Virginia,
United States, 24151

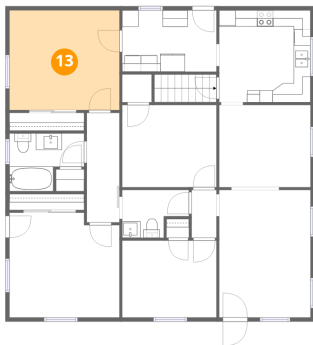
12 Floor 2 - Bedroom



Dimensions: 11'5" x 9'4"
Area: 107 sq. ft
Counted as living area: Yes

Heated: Yes
Finished: Yes
Enclosed: Yes
Contiguous: Yes
Permitted: Yes
Wet space: No
Addition: No
Conversion: No

13 Floor 2 - Bedroom



Dimensions: 13'4" x 12'1"
Area: 162 sq. ft
Counted as living area: Yes

Heated: Yes
Finished: Yes
Enclosed: Yes
Contiguous: Yes
Permitted: Yes
Wet space: No
Addition: No
Conversion: No