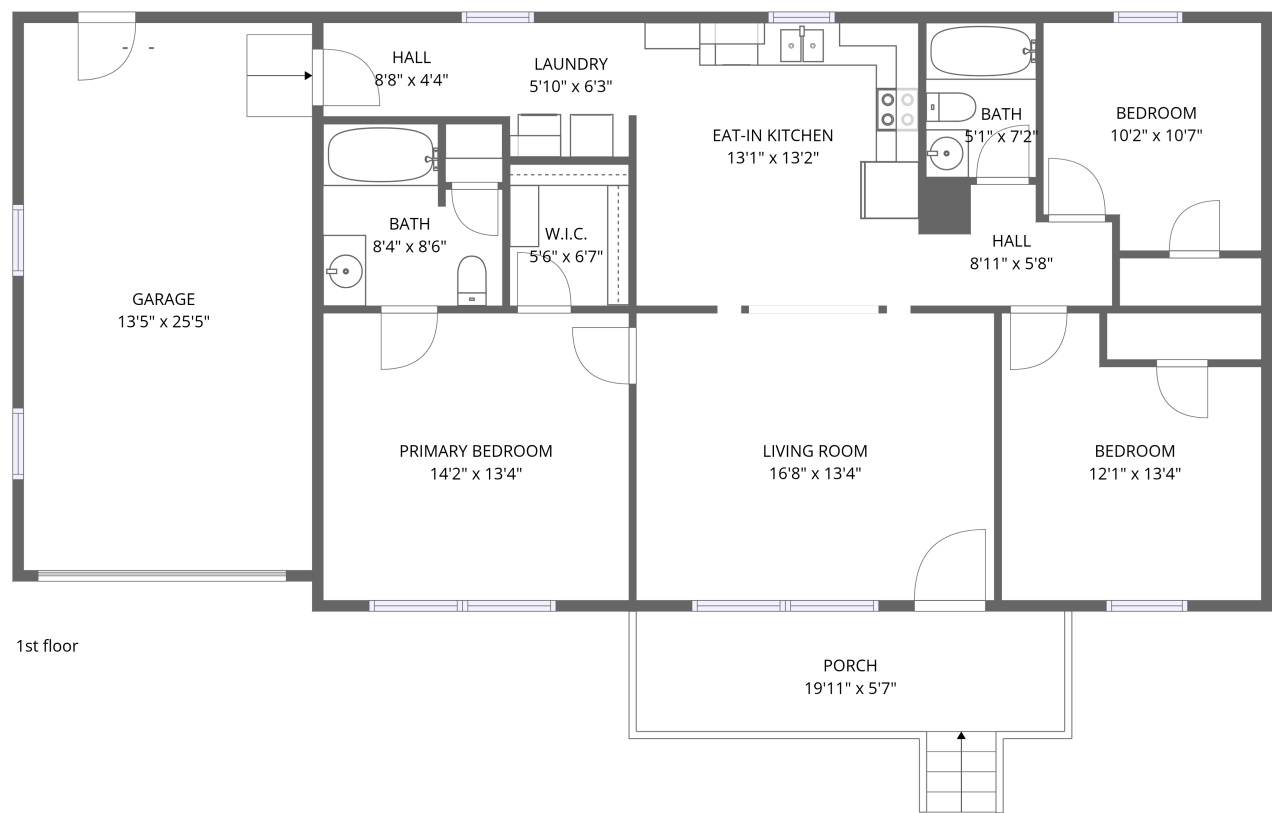


Home data report


350 Leanor Street, Rocky Mount, Franklin County, Virginia,
United States, 24151




Total Area: 1169 sq. ft
1st Floor: 1169 sq. ft
Excluded: Garage 341 sq. ft, Porch 123 sq. ft, Walls: 98 sq. ft

Property summary

 **1** Floors

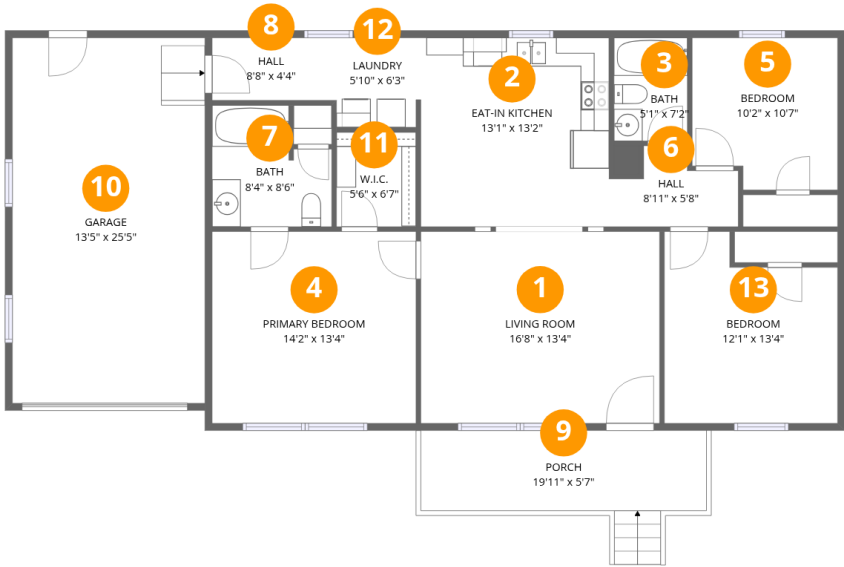
 **3** Bedrooms

 **2** Bathrooms

 **1** Garages

Home data report

350 Leanor Street, Rocky Mount, Franklin County, Virginia,
United States, 24151



Room dimensions

Floor 1 Total:1169sqft Excluded: 464sqft

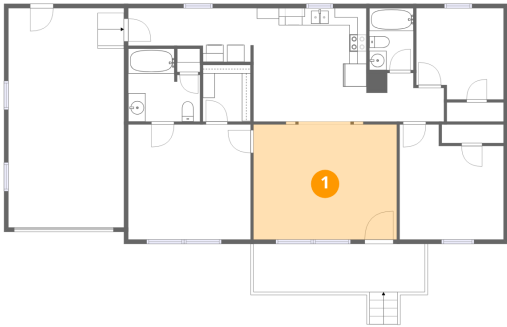
#		Dimensions	sqft	Counted as living area
1	Living Room	16'8" x 13'4"	222 sq. ft	Yes
2	Eat-in Kitchen	13'1" x 13'2"	173 sq. ft	Yes
3	Bath	5'1" x 7'2"	37 sq. ft	Yes
4	Primary Bedroom	14'2" x 13'4"	189 sq. ft	Yes
5	Bedroom	10'2" x 10'7"	107 sq. ft	Yes
6	Hall	8'11" x 5'8"	50 sq. ft	Yes
7	Bath	8'4" x 8'6"	70 sq. ft	Yes
8	Hall	8'8" x 4'4"	38 sq. ft	Yes
9	Porch	19'11" x 5'7"	111 sq. ft	No
10	Garage	13'5" x 25'5"	341 sq. ft	No
11	W.I.C.	5'6" x 6'7"	36 sq. ft	Yes

Home data report

**350 Leanor Street, Rocky Mount, Franklin County, Virginia,
United States, 24151**

#		Dimensions	sqft	Counted as living area
12	Laundry	5'10" x 6'3"	37 sq. ft	Yes
13	Bedroom	12'1" x 13'4"	161 sq. ft	Yes

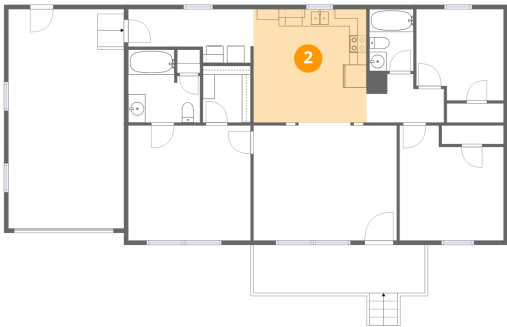
1 Floor 1 - Living Room



Dimensions: 16'8" x 13'4"
Area: 222 sq. ft
Counted as living area: Yes

Heated: Yes
Finished: Yes
Enclosed: Yes
Contiguous: Yes
Permitted: Yes
Wet space: No
Addition: No
Conversion: No

2 Floor 1 - Eat-in Kitchen

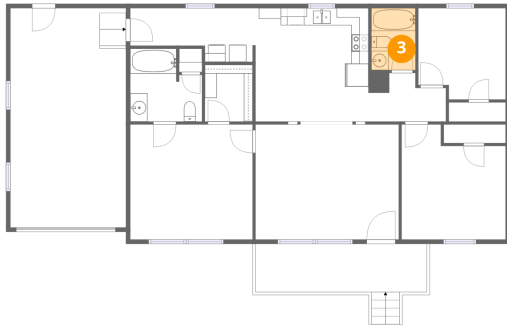


Dimensions: 13'1" x 13'2"
Area: 173 sq. ft
Counted as living area: Yes

Heated: Yes
Finished: Yes
Enclosed: Yes
Contiguous: Yes
Permitted: Yes
Wet space: No
Addition: No
Conversion: No

350 Leanor Street, Rocky Mount, Franklin County, Virginia,
United States, 24151

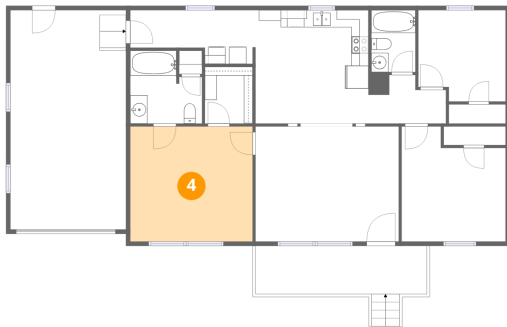
3 Floor 1 - Bath



Dimensions: 5'1" x 7'2"
Area: 37 sq. ft
Counted as living area: Yes

Heated: Yes
Finished: Yes
Enclosed: Yes
Contiguous: Yes
Permitted: Yes
Wet space: Yes
Addition: No
Conversion: No

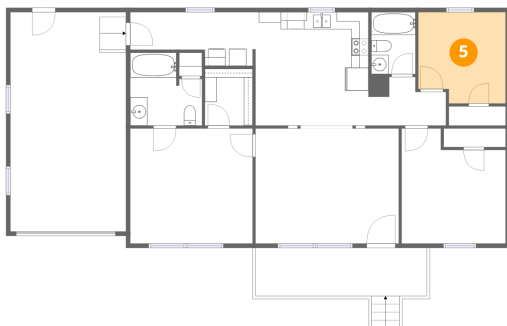
4 Floor 1 - Primary Bedroom



Dimensions: 14'2" x 13'4"
Area: 189 sq. ft
Counted as living area: Yes

Heated: Yes
Finished: Yes
Enclosed: Yes
Contiguous: Yes
Permitted: Yes
Wet space: No
Addition: No
Conversion: No

5 Floor 1 - Bedroom



Dimensions: 10'2" x 10'7"
Area: 107 sq. ft
Counted as living area: Yes

Heated: Yes
Finished: Yes
Enclosed: Yes
Contiguous: Yes
Permitted: Yes
Wet space: No
Addition: No
Conversion: No

350 Leanor Street, Rocky Mount, Franklin County, Virginia,
United States, 24151

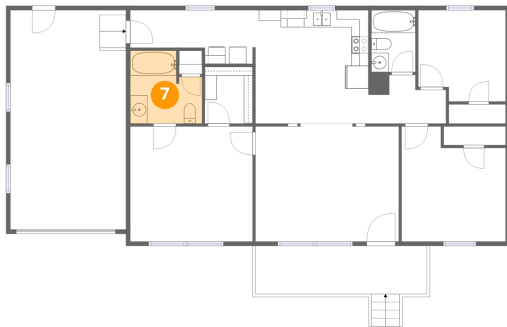
6 Floor 1 - Hall



Dimensions: 8'11" x 5'8"
Area: 50 sq. ft
Counted as living area: Yes

Heated: Yes
Finished: Yes
Enclosed: Yes
Contiguous: Yes
Permitted: Yes
Wet space: No
Addition: No
Conversion: No

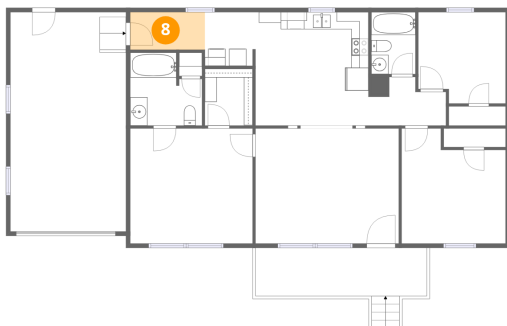
7 Floor 1 - Bath



Dimensions: 8'4" x 8'6"
Area: 70 sq. ft
Counted as living area: Yes

Heated: Yes
Finished: Yes
Enclosed: Yes
Contiguous: Yes
Permitted: Yes
Wet space: Yes
Addition: No
Conversion: No

8 Floor 1 - Hall



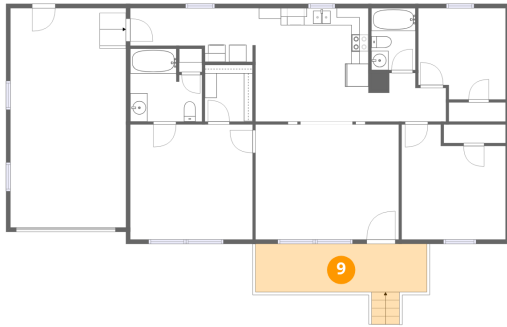
Dimensions: 8'8" x 4'4"
Area: 38 sq. ft
Counted as living area: Yes

Heated: Yes
Finished: Yes
Enclosed: Yes
Contiguous: Yes
Permitted: Yes
Wet space: No
Addition: No
Conversion: No

Home data report

350 Leanor Street, Rocky Mount, Franklin County, Virginia,
United States, 24151

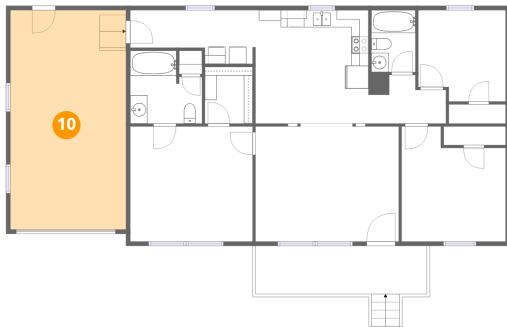
9 Floor 1 - Porch



Dimensions: 19'11" x 5'7"
Area: 111 sq. ft
Counted as living area: No

Heated: No
Finished: No
Enclosed: No
Contiguous: Yes
Permitted: Yes
Wet space: No
Addition: No
Conversion: No

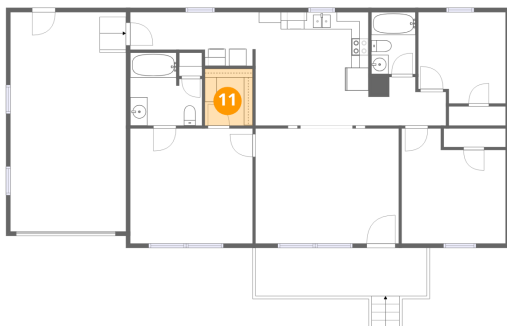
10 Floor 1 - Garage



Dimensions: 13'5" x 25'5"
Area: 341 sq. ft
Counted as living area: No

Heated: No
Finished: No
Enclosed: Yes
Contiguous: Yes
Permitted: Yes
Wet space: No
Addition: No
Conversion: No

11 Floor 1 - W.I.C.



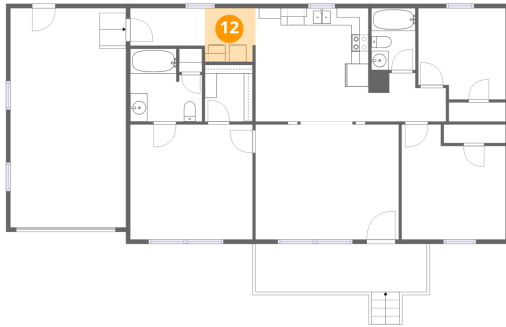
Dimensions: 5'6" x 6'7"
Area: 36 sq. ft
Counted as living area: Yes

Heated: Yes
Finished: Yes
Enclosed: Yes
Contiguous: Yes
Permitted: Yes
Wet space: No
Addition: No
Conversion: No

Home data report

350 Leanor Street, Rocky Mount, Franklin County, Virginia,
United States, 24151

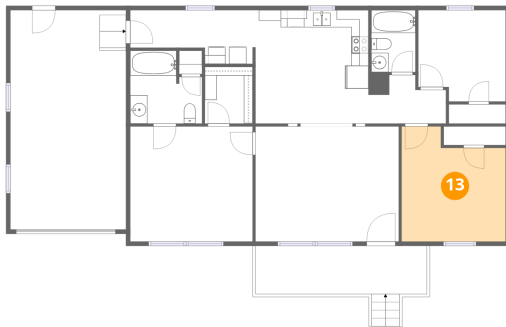
12 Floor 1 - Laundry



Dimensions: 5'10" x 6'3"
Area: 37 sq. ft
Counted as living area: Yes

Heated: Yes
Finished: Yes
Enclosed: Yes
Contiguous: Yes
Permitted: Yes
Wet space: No
Addition: No
Conversion: No

13 Floor 1 - Bedroom



Dimensions: 12'1" x 13'4"
Area: 161 sq. ft
Counted as living area: Yes

Heated: Yes
Finished: Yes
Enclosed: Yes
Contiguous: Yes
Permitted: Yes
Wet space: No
Addition: No
Conversion: No