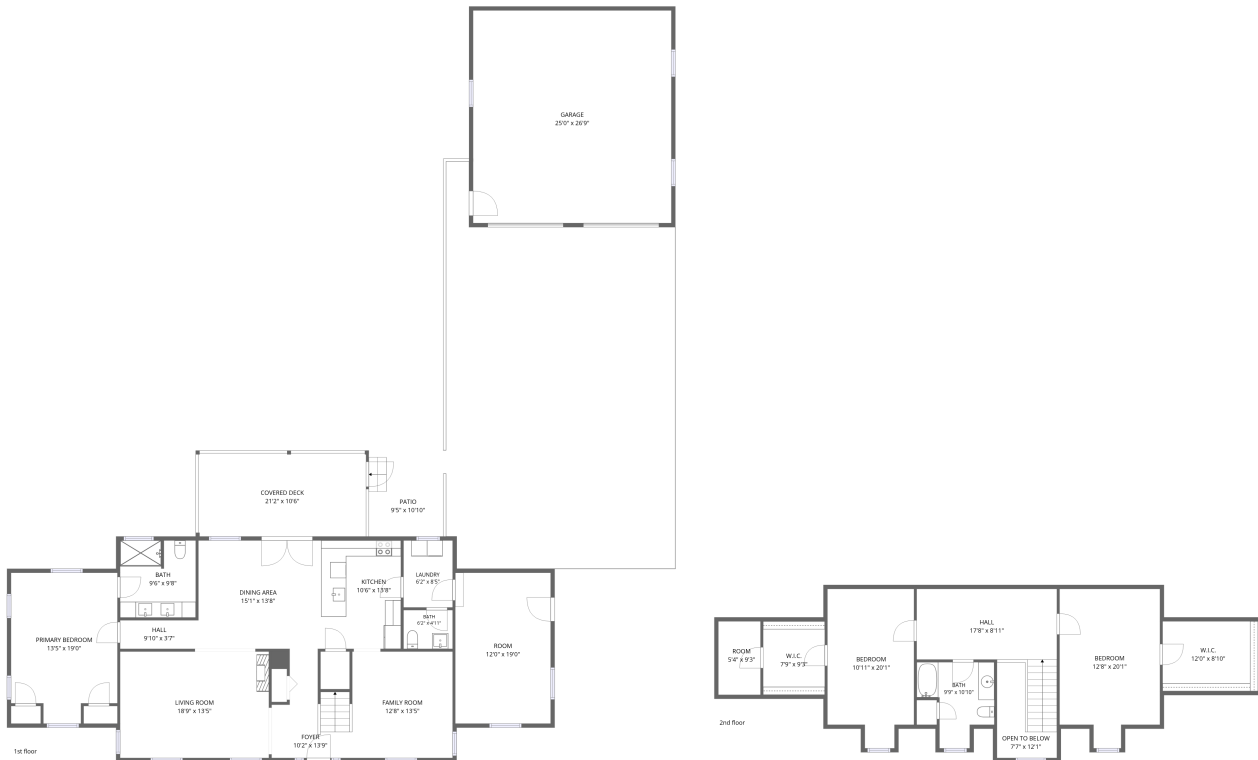


# Home data report

## 2651 Timberwood Lane, Moneta, Virginia 24121, United States




**Total Area: 2559 sq. ft**

1st Floor: 1646 sq. ft, 2nd Floor: 913 sq. ft

Excluded: Garage 670 sq. ft, Covered deck 222 sq. ft, Patio 102 sq. ft, Room 49 sq. ft, Open to below 56 sq. ft, Walls: 250 sq. ft

### Property summary

 **2** Floors

 **3** Bedrooms

 **2** Bathrooms

Home data report

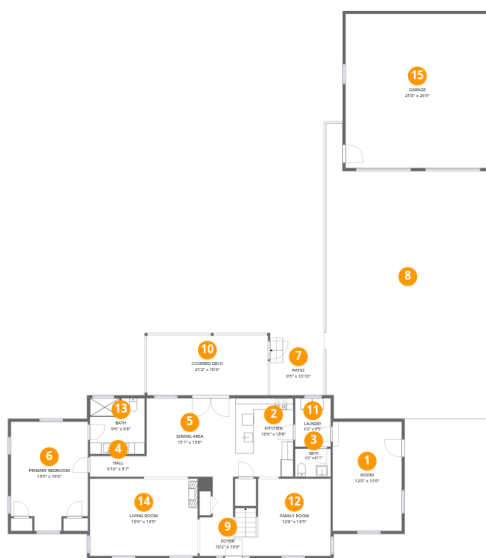
**2651 Timberwood Lane, Moneta, Virginia 24121, United States**

 **1**  
Half baths

 **1**  
Garages

Home data report

2651 Timberwood Lane, Moneta, Virginia 24121, United States



## Room dimensions

Floor 1

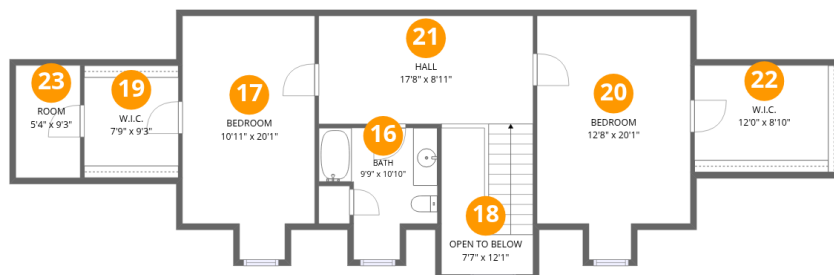
Total:1646sqft Excluded: 994sqft

#		Dimensions	sqft	Counted as living area
1	Room	12'0" x 19'0"	229 sq. ft	Yes
2	Kitchen	10'6" x 13'8"	143 sq. ft	Yes
3	Bath	6'2" x 4'11"	30 sq. ft	Yes
4	Hall	9'10" x 3'7"	36 sq. ft	Yes
5	Dining Area	15'1" x 13'8"	206 sq. ft	Yes
6	Primary Bedroom	13'5" x 19'0"	233 sq. ft	Yes
7	Patio	9'5" x 10'10"	102 sq. ft	No
8	Driveway	29'3" x 51'4"	1265 sq. ft	No
9	Foyer	10'2" x 13'9"	99 sq. ft	Yes
10	Covered Deck	21'2" x 10'6"	222 sq. ft	No
11	Laundry	6'2" x 8'5"	52 sq. ft	Yes

Home data report

**2651 Timberwood Lane, Moneta, Virginia 24121, United States**

#		Dimensions	sqft	Counted as living area
12	Family Room	12'8" x 13'5"	170 sq. ft	Yes
13	Bath	9'6" x 9'8"	92 sq. ft	Yes
14	Living Room	18'9" x 13'5"	252 sq. ft	Yes
15	Garage	25'0" x 26'9"	670 sq. ft	No



## Room dimensions

Floor 2

Total:913sqft Excluded: 105sqft

#		Dimensions	sqft	Counted as living area
16	Bath	9'9" x 10'10"	79 sq. ft	Yes
17	Bedroom	10'11" x 20'1"	198 sq. ft	Yes
18	Open To Below	7'7" x 12'1"	56 sq. ft	No
19	W.I.C.	7'9" x 9'3"	72 sq. ft	Yes
20	Bedroom	12'8" x 20'1"	227 sq. ft	Yes
21	Hall	17'8" x 8'11"	195 sq. ft	Yes
22	W.I.C.	12'0" x 8'10"	106 sq. ft	Yes
23	Room	5'4" x 9'3"	49 sq. ft	No

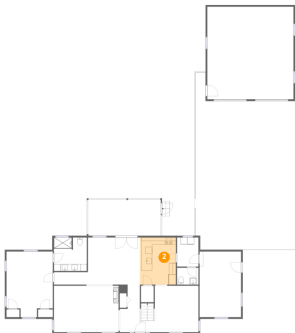
## 1 Floor 1 - Room



Dimensions: 12'0" x 19'0"  
Area: 229 sq. ft  
Counted as living area: Yes

Heated: Yes  
Finished: Yes  
Enclosed: Yes  
Contiguous: Yes  
Permitted: Yes  
Wet space: No  
Addition: No  
Conversion: No

## 2 Floor 1 - Kitchen



Dimensions: 10'6" x 13'8"  
Area: 143 sq. ft  
Counted as living area: Yes

Heated: Yes  
Finished: Yes  
Enclosed: Yes  
Contiguous: Yes  
Permitted: Yes  
Wet space: No  
Addition: No  
Conversion: No

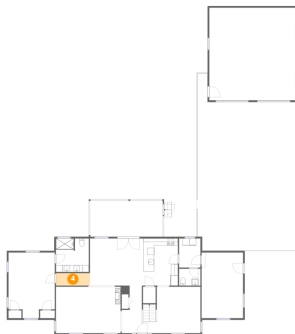
### 3 Floor 1 - Bath



Dimensions: 6'2" x 4'11"  
Area: 30 sq. ft  
Counted as living area: Yes

Heated: Yes  
Finished: Yes  
Enclosed: Yes  
Contiguous: Yes  
Permitted: Yes  
Wet space: Yes  
Addition: No  
Conversion: No

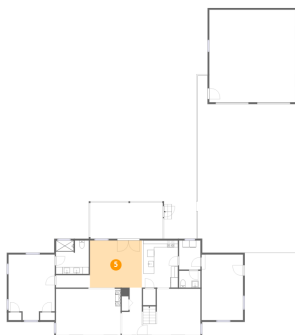
### 4 Floor 1 - Hall



Dimensions: 9'10" x 3'7"  
Area: 36 sq. ft  
Counted as living area: Yes

Heated: Yes  
Finished: Yes  
Enclosed: Yes  
Contiguous: Yes  
Permitted: Yes  
Wet space: No  
Addition: No  
Conversion: No

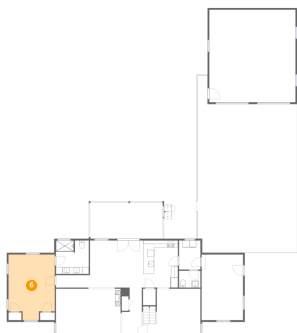
### 5 Floor 1 - Dining Area



Dimensions: 15'1" x 13'8"  
Area: 206 sq. ft  
Counted as living area: Yes

Heated: Yes  
Finished: Yes  
Enclosed: Yes  
Contiguous: Yes  
Permitted: Yes  
Wet space: No  
Addition: No  
Conversion: No

### 6 Floor 1 - Primary Bedroom



Dimensions: 13'5" x 19'0"  
Area: 233 sq. ft  
Counted as living area: Yes

Heated: Yes  
Finished: Yes  
Enclosed: Yes  
Contiguous: Yes  
Permitted: Yes  
Wet space: No  
Addition: No  
Conversion: No

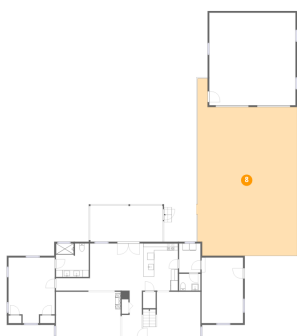
### 7 Floor 1 - Patio



Dimensions: 9'5" x 10'10"  
Area: 102 sq. ft  
Counted as living area: No

Heated: No  
Finished: No  
Enclosed: No  
Contiguous: Yes  
Permitted: Yes  
Wet space: No  
Addition: No  
Conversion: No

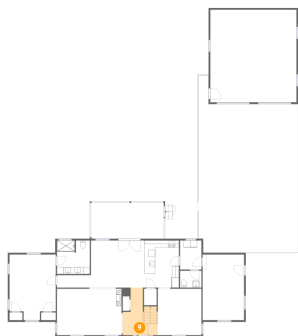
### 8 Floor 1 - Driveway



Dimensions: 29'3" x 51'4"  
Area: 1265 sq. ft  
Counted as living area: No

Heated: No  
Finished: No  
Enclosed: No  
Contiguous: Yes  
Permitted: No  
Wet space: No  
Addition: No  
Conversion: No

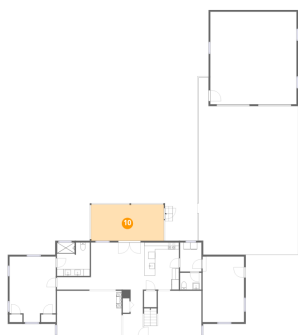
### 9 Floor 1 - Foyer



Dimensions: 10'2" x 13'9"  
Area: 99 sq. ft  
Counted as living area: Yes

Heated: Yes  
Finished: Yes  
Enclosed: Yes  
Contiguous: Yes  
Permitted: Yes  
Wet space: No  
Addition: No  
Conversion: No

### 10 Floor 1 - Covered Deck



Dimensions: 21'2" x 10'6"  
Area: 222 sq. ft  
Counted as living area: No

Heated: No  
Finished: No  
Enclosed: No  
Contiguous: Yes  
Permitted: Yes  
Wet space: No  
Addition: No  
Conversion: No

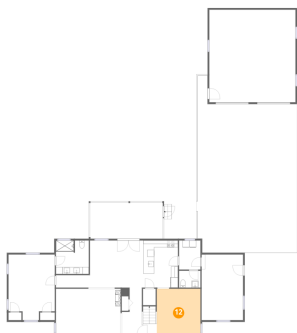
### 11 Floor 1 - Laundry



Dimensions: 6'2" x 8'5"  
Area: 52 sq. ft  
Counted as living area: Yes

Heated: Yes  
Finished: Yes  
Enclosed: Yes  
Contiguous: Yes  
Permitted: Yes  
Wet space: No  
Addition: No  
Conversion: No

## 12 Floor 1 - Family Room



Dimensions: 12'8" x 13'5"  
Area: 170 sq. ft  
Counted as living area: Yes

Heated: Yes  
Finished: Yes  
Enclosed: Yes  
Contiguous: Yes  
Permitted: Yes  
Wet space: No  
Addition: No  
Conversion: No

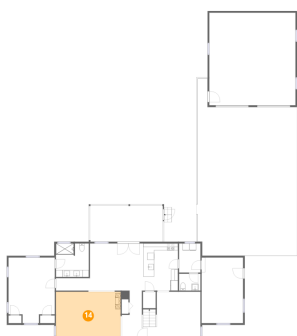
## 13 Floor 1 - Bath



Dimensions: 9'6" x 9'8"  
Area: 92 sq. ft  
Counted as living area: Yes

Heated: Yes  
Finished: Yes  
Enclosed: Yes  
Contiguous: Yes  
Permitted: Yes  
Wet space: Yes  
Addition: No  
Conversion: No

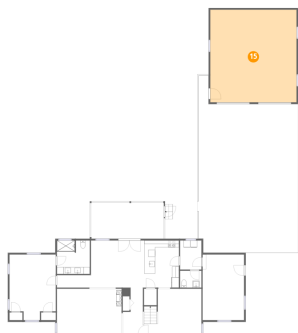
## 14 Floor 1 - Living Room



Dimensions: 18'9" x 13'5"  
Area: 252 sq. ft  
Counted as living area: Yes

Heated: Yes  
Finished: Yes  
Enclosed: Yes  
Contiguous: Yes  
Permitted: Yes  
Wet space: No  
Addition: No  
Conversion: No

### 15 Floor 1 - Garage



Dimensions: 25'0" x 26'9"  
Area: 670 sq. ft  
Counted as living area: No

Heated: No  
Finished: No  
Enclosed: Yes  
Contiguous: Yes  
Permitted: Yes  
Wet space: No  
Addition: No  
Conversion: No

### 16 Floor 2 - Bath



Dimensions: 9'9" x 10'10"  
Area: 79 sq. ft  
Counted as living area: Yes

Heated: Yes  
Finished: Yes  
Enclosed: Yes  
Contiguous: Yes  
Permitted: Yes  
Wet space: Yes  
Addition: No  
Conversion: No

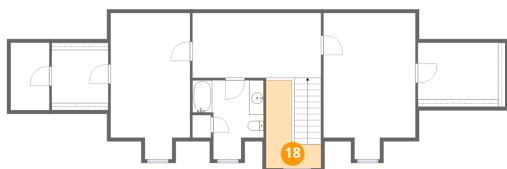
### 17 Floor 2 - Bedroom



Dimensions: 10'11" x 20'1"  
Area: 198 sq. ft  
Counted as living area: Yes

Heated: Yes  
Finished: Yes  
Enclosed: Yes  
Contiguous: Yes  
Permitted: Yes  
Wet space: No  
Addition: No  
Conversion: No

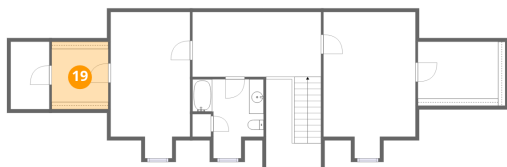
### 18 Floor 2 - Open To Below



Dimensions: 7'7" x 12'1"  
Area: 56 sq. ft  
Counted as living area: No

Heated: No  
Finished: No  
Enclosed: No  
Contiguous: Yes  
Permitted: No  
Wet space: No  
Addition: No  
Conversion: No

### 19 Floor 2 - W.I.C.



Dimensions: 7'9" x 9'3"  
Area: 72 sq. ft  
Counted as living area: Yes

Heated: Yes  
Finished: Yes  
Enclosed: Yes  
Contiguous: Yes  
Permitted: Yes  
Wet space: No  
Addition: No  
Conversion: No

### 20 Floor 2 - Bedroom



Dimensions: 12'8" x 20'1"  
Area: 227 sq. ft  
Counted as living area: Yes

Heated: Yes  
Finished: Yes  
Enclosed: Yes  
Contiguous: Yes  
Permitted: Yes  
Wet space: No  
Addition: No  
Conversion: No

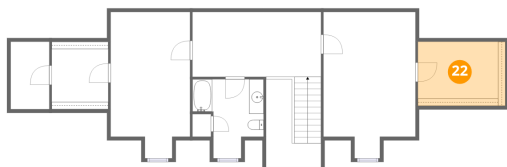
### 21 Floor 2 - Hall



Dimensions: 17'8" x 8'11"  
Area: 195 sq. ft  
Counted as living area: Yes

Heated: Yes  
Finished: Yes  
Enclosed: Yes  
Contiguous: Yes  
Permitted: Yes  
Wet space: No  
Addition: No  
Conversion: No

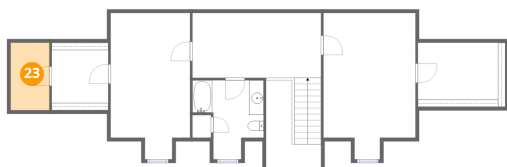
### 22 Floor 2 - W.I.C.



Dimensions: 12'0" x 8'10"  
Area: 106 sq. ft  
Counted as living area: Yes

Heated: Yes  
Finished: Yes  
Enclosed: Yes  
Contiguous: Yes  
Permitted: Yes  
Wet space: No  
Addition: No  
Conversion: No

### 23 Floor 2 - Room



Dimensions: 5'4" x 9'3"  
Area: 49 sq. ft  
Counted as living area: No

Heated: Yes  
Finished: No  
Enclosed: Yes  
Contiguous: Yes  
Permitted: Yes  
Wet space: No  
Addition: No  
Conversion: No