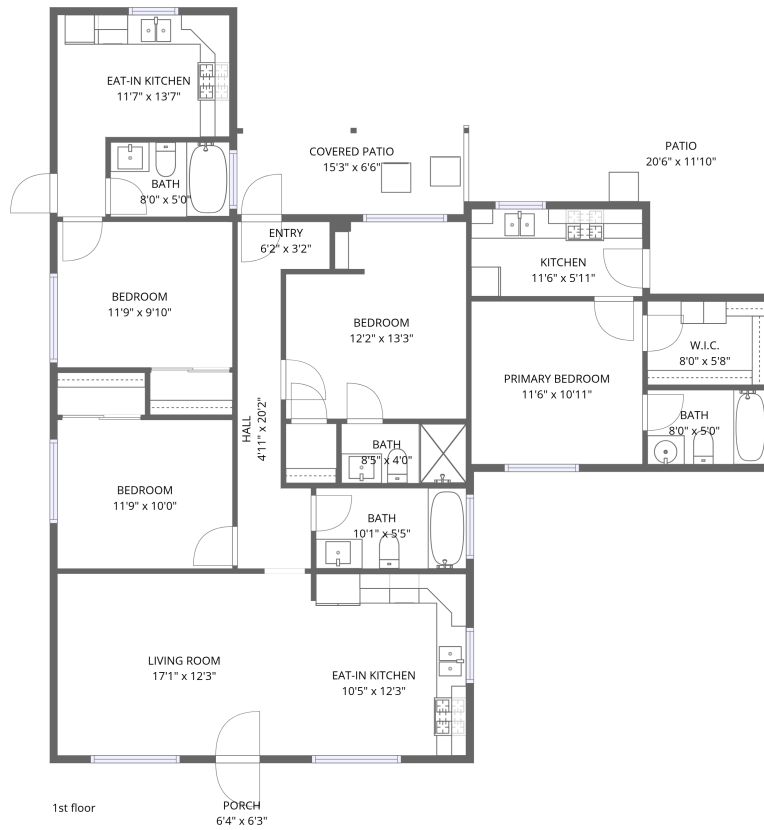


Home data report

# 560 La Seda Rd, La Puente, CA, US




**Total Area: 1442 sq. ft**


1st Floor: 1442 sq. ft

Excluded: Porch 39 sq. ft, Patio 167 sq. ft, Covered patio 99 sq. ft, Walls: 0 sq. ft

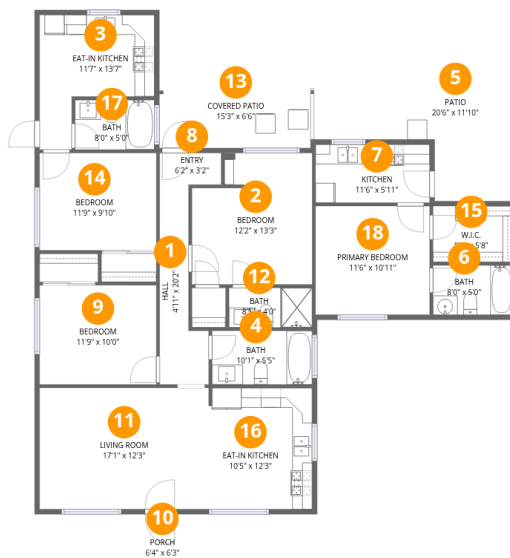
## Property summary

 **1** Floors

 **4** Bedrooms

 **4** Bathrooms

# 560 La Seda Rd, La Puente, CA, US



## Room dimensions

Floor 1

Total: 1442sqft Excluded: 305sqft

#		Dimensions	sqft	Counted as living area
1	Hall	4'11" x 20'2"	100 sq. ft	Yes
2	Bedroom	12'2" x 13'3"	161 sq. ft	Yes
3	Eat-in Kitchen	11'7" x 13'7"	157 sq. ft	Yes
4	Bath	10'1" x 5'5"	55 sq. ft	Yes
5	Patio	20'6" x 11'10"	243 sq. ft	No
6	Bath	8'0" x 5'0"	40 sq. ft	Yes
7	Kitchen	11'6" x 5'11"	68 sq. ft	Yes
8	Entry	6'2" x 3'2"	20 sq. ft	Yes
9	Bedroom	11'9" x 10'0"	118 sq. ft	Yes
10	Porch	6'4" x 6'3"	39 sq. ft	No
11	Living Room	17'1" x 12'3"	209 sq. ft	Yes

Home data report

**560 La Seda Rd,La Puente,CA,US**

#		Dimensions	sqft	Counted as living area
12	Bath	8'5" x 4'0"	34 sq. ft	Yes
13	Covered Patio	15'3" x 6'6"	99 sq. ft	No
14	Bedroom	11'9" x 9'10"	115 sq. ft	Yes
15	W.I.C.	8'0" x 5'8"	45 sq. ft	Yes
16	Eat-in Kitchen	10'5" x 12'3"	128 sq. ft	Yes
17	Bath	8'0" x 5'0"	40 sq. ft	Yes
18	Primary Bedroom	11'6" x 10'11"	126 sq. ft	Yes

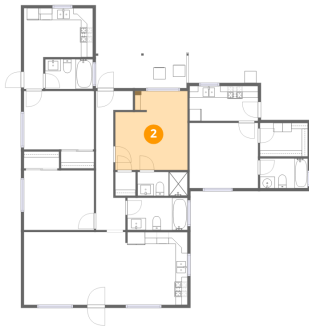
## 1 Floor 1 - Hall



Dimensions: 4'11" x 20'2"  
Area: 100 sq. ft  
Counted as living area: Yes

Heated: Yes  
Finished: Yes  
Enclosed: Yes  
Contiguous: Yes  
Permitted: Yes  
Wet space: No  
Addition: No  
Conversion: No

## 2 Floor 1 - Bedroom



Dimensions: 12'2" x 13'3"  
Area: 161 sq. ft  
Counted as living area: Yes

Heated: Yes  
Finished: Yes  
Enclosed: Yes  
Contiguous: Yes  
Permitted: Yes  
Wet space: No  
Addition: No  
Conversion: No

### 3 Floor 1 - Eat-in Kitchen



Dimensions: 11'7" x 13'7"  
Area: 157 sq. ft  
Counted as living area: Yes

Heated: Yes  
Finished: Yes  
Enclosed: Yes  
Contiguous: Yes  
Permitted: Yes  
Wet space: No  
Addition: No  
Conversion: No

### 4 Floor 1 - Bath



Dimensions: 10'1" x 5'5"  
Area: 55 sq. ft  
Counted as living area: Yes

Heated: Yes  
Finished: Yes  
Enclosed: Yes  
Contiguous: Yes  
Permitted: Yes  
Wet space: Yes  
Addition: No  
Conversion: No

### 5 Floor 1 - Patio



Dimensions: 20'6" x 11'10"  
Area: 243 sq. ft  
Counted as living area: No

Heated: No  
Finished: No  
Enclosed: No  
Contiguous: Yes  
Permitted: Yes  
Wet space: No  
Addition: No  
Conversion: No

## 6 Floor 1 - Bath



Dimensions: 8'0" x 5'0"  
Area: 40 sq. ft  
Counted as living area: Yes

Heated: Yes  
Finished: Yes  
Enclosed: Yes  
Contiguous: Yes  
Permitted: Yes  
Wet space: Yes  
Addition: No  
Conversion: No

## 7 Floor 1 - Kitchen



Dimensions: 11'6" x 5'11"  
Area: 68 sq. ft  
Counted as living area: Yes

Heated: Yes  
Finished: Yes  
Enclosed: Yes  
Contiguous: Yes  
Permitted: Yes  
Wet space: No  
Addition: No  
Conversion: No

## 8 Floor 1 - Entry



Dimensions: 6'2" x 3'2"  
Area: 20 sq. ft  
Counted as living area: Yes

Heated: Yes  
Finished: Yes  
Enclosed: Yes  
Contiguous: Yes  
Permitted: Yes  
Wet space: No  
Addition: No  
Conversion: No

### 9 Floor 1 - Bedroom



Dimensions: 11'9" x 10'0"  
Area: 118 sq. ft  
Counted as living area: Yes

Heated: Yes  
Finished: Yes  
Enclosed: Yes  
Contiguous: Yes  
Permitted: Yes  
Wet space: No  
Addition: No  
Conversion: No

### 10 Floor 1 - Porch



Dimensions: 6'4" x 6'3"  
Area: 39 sq. ft  
Counted as living area: No

Heated: No  
Finished: No  
Enclosed: No  
Contiguous: Yes  
Permitted: Yes  
Wet space: No  
Addition: No  
Conversion: No

### 11 Floor 1 - Living Room



Dimensions: 17'1" x 12'3"  
Area: 209 sq. ft  
Counted as living area: Yes

Heated: Yes  
Finished: Yes  
Enclosed: Yes  
Contiguous: Yes  
Permitted: Yes  
Wet space: No  
Addition: No  
Conversion: No

## 12 Floor 1 - Bath



Dimensions: 8'5" x 4'0"  
Area: 34 sq. ft  
Counted as living area: Yes

Heated: Yes  
Finished: Yes  
Enclosed: Yes  
Contiguous: Yes  
Permitted: Yes  
Wet space: Yes  
Addition: No  
Conversion: No

## 13 Floor 1 - Covered Patio



Dimensions: 15'3" x 6'6"  
Area: 99 sq. ft  
Counted as living area: No

Heated: No  
Finished: No  
Enclosed: No  
Contiguous: Yes  
Permitted: Yes  
Wet space: No  
Addition: No  
Conversion: No

## 14 Floor 1 - Bedroom



Dimensions: 11'9" x 9'10"  
Area: 115 sq. ft  
Counted as living area: Yes

Heated: Yes  
Finished: Yes  
Enclosed: Yes  
Contiguous: Yes  
Permitted: Yes  
Wet space: No  
Addition: No  
Conversion: No

**15** Floor 1 - W.I.C.



Dimensions: 8'0" x 5'8"  
Area: 45 sq. ft  
Counted as living area: Yes

Heated: Yes  
Finished: Yes  
Enclosed: Yes  
Contiguous: Yes  
Permitted: Yes  
Wet space: No  
Addition: No  
Conversion: No

**16** Floor 1 - Eat-in Kitchen



Dimensions: 10'5" x 12'3"  
Area: 128 sq. ft  
Counted as living area: Yes

Heated: Yes  
Finished: Yes  
Enclosed: Yes  
Contiguous: Yes  
Permitted: Yes  
Wet space: No  
Addition: No  
Conversion: No

**17** Floor 1 - Bath



Dimensions: 8'0" x 5'0"  
Area: 40 sq. ft  
Counted as living area: Yes

Heated: Yes  
Finished: Yes  
Enclosed: Yes  
Contiguous: Yes  
Permitted: Yes  
Wet space: Yes  
Addition: No  
Conversion: No

**18** Floor 1 - Primary Bedroom

---



**Dimensions:** 11'6" x 10'11"  
**Area:** 126 sq. ft  
**Counted as living area:** Yes

**Heated:** Yes  
**Finished:** Yes  
**Enclosed:** Yes  
**Contiguous:** Yes  
**Permitted:** Yes  
**Wet space:** No  
**Addition:** No  
**Conversion:** No