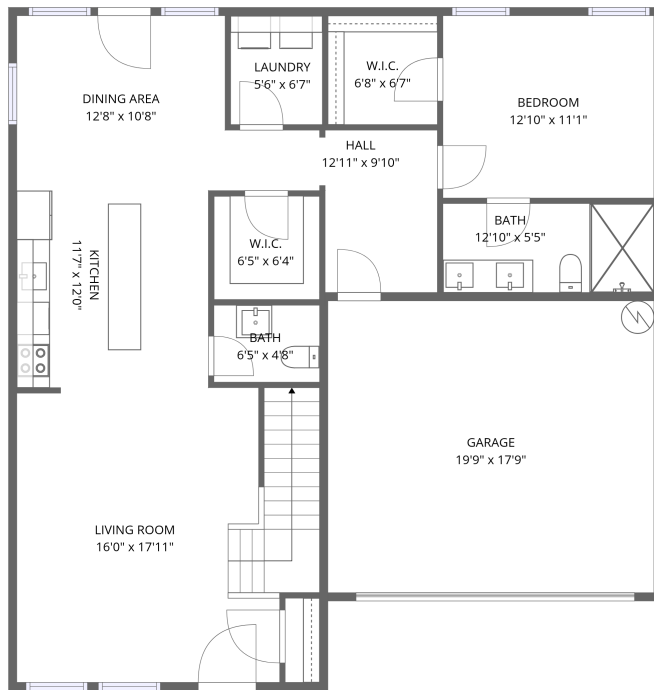
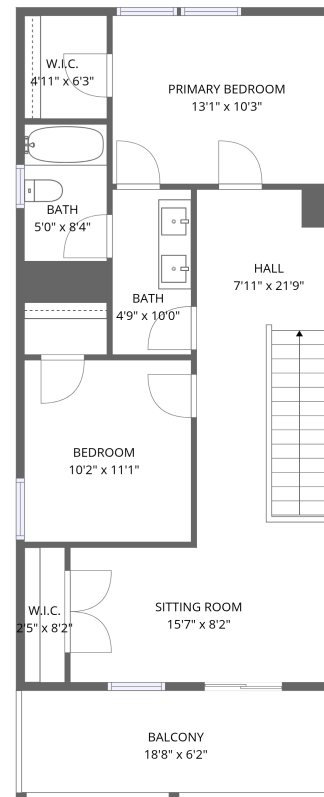


## Home data report

2103 Cactus Alley, Canyon Creek, Granbury, Hood County, Texas, United States, 76048



1st floor



2nd floor

**Total Area: 1832 sq. ft**

1st Floor: 1087 sq. ft, 2nd Floor: 745 sq. ft

Excluded: Garage 351 sq. ft, Balcony 116 sq. ft, Walls: 159 sq. ft

## Property summary



Home data report

**2103 Cactus Alley, Canyon Creek, Granbury, Hood County,  
Texas, United States, 76048**



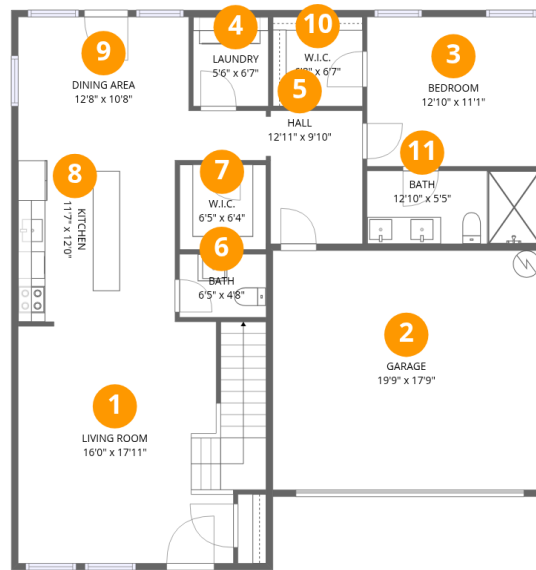
**1**  
Half baths



**1**  
Garages

## Home data report

2103 Cactus Alley, Canyon Creek, Granbury, Hood County, Texas, United States, 76048



## Room dimensions

Floor 1

Total:1087sqft

Excluded: 351sqft

#		Dimensions	sqft	Counted as living area
1	Living Room	16'0" x 17'11"	286 sq. ft	Yes
2	Garage	19'9" x 17'9"	351 sq. ft	No
3	Bedroom	12'10" x 11'1"	142 sq. ft	Yes
4	Laundry	5'6" x 6'7"	36 sq. ft	Yes
5	Hall	12'11" x 9'10"	127 sq. ft	Yes
6	Bath	6'5" x 4'8"	30 sq. ft	Yes
7	W.I.C.	6'5" x 6'4"	40 sq. ft	Yes
8	Kitchen	11'7" x 12'0"	139 sq. ft	Yes
9	Dining Area	12'8" x 10'8"	134 sq. ft	Yes
10	W.I.C.	6'8" x 6'7"	44 sq. ft	Yes
11	Bath	12'10" x 5'5"	69 sq. ft	Yes

Scan captured on Tue, 07 Apr 2026 22:18:59 GMT

FLOOR PLAN CREATED BY CUBICASA APP. MEASUREMENTS DEEMED HIGHLY RELIABLE BUT NOT GUARANTEED.

## Home data report

2103 Cactus Alley, Canyon Creek, Granbury, Hood County, Texas, United States, 76048



## Room dimensions

Floor 2

Total:745sqft

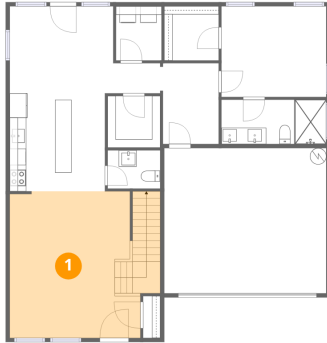
Excluded: 116sqft

#		Dimensions	sqft	Counted as living area
12	W.I.C.	2'5" x 8'2"	20 sq. ft	Yes
13	Bedroom	10'2" x 11'1"	112 sq. ft	Yes
14	Primary Bedroom	13'1" x 10'3"	134 sq. ft	Yes
15	Bath	4'9" x 10'0"	48 sq. ft	Yes
16	Balcony	18'8" x 6'2"	115 sq. ft	No
17	Hall	7'11" x 21'9"	173 sq. ft	Yes
18	Bath	5'0" x 8'4"	42 sq. ft	Yes
19	Sitting Room	15'7" x 8'2"	128 sq. ft	Yes
20	W.I.C.	4'11" x 6'3"	31 sq. ft	Yes

2103 Cactus Alley, Canyon Creek, Granbury, Hood County,  
Texas, United States, 76048

**1** Floor 1 - Living Room

---

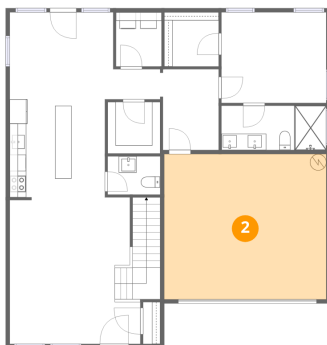


Dimensions: 16'0" x 17'11"  
Area: 286 sq. ft  
Counted as living area: Yes

Heated: Yes  
Finished: Yes  
Enclosed: Yes  
Contiguous: Yes  
Permitted: Yes  
Wet space: No  
Addition: No  
Conversion: No

**2** Floor 1 - Garage

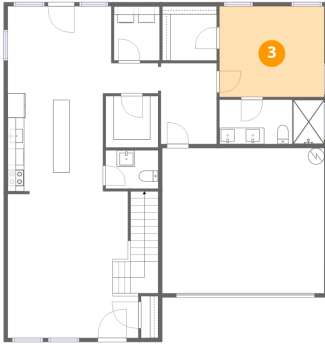
---



Dimensions: 19'9" x 17'9"  
Area: 351 sq. ft  
Counted as living area: No

Heated: No  
Finished: No  
Enclosed: Yes  
Contiguous: Yes  
Permitted: Yes  
Wet space: No  
Addition: No  
Conversion: No

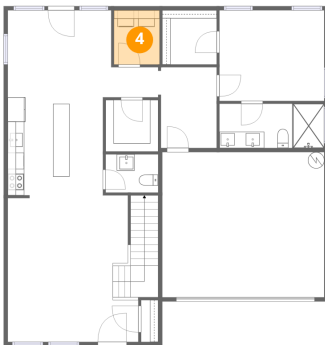
**3** Floor 1 - Bedroom



Dimensions: 12'10" x 11'1"  
Area: 142 sq. ft  
Counted as living area: Yes

Heated: Yes  
Finished: Yes  
Enclosed: Yes  
Contiguous: Yes  
Permitted: Yes  
Wet space: No  
Addition: No  
Conversion: No

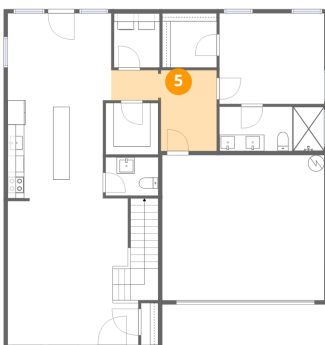
**4** Floor 1 - Laundry



Dimensions: 5'6" x 6'7"  
Area: 36 sq. ft  
Counted as living area: Yes

Heated: Yes  
Finished: Yes  
Enclosed: Yes  
Contiguous: Yes  
Permitted: Yes  
Wet space: No  
Addition: No  
Conversion: No

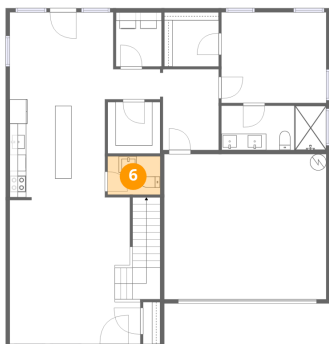
**5** Floor 1 - Hall



Dimensions: 12'11" x 9'10"  
Area: 127 sq. ft  
Counted as living area: Yes

Heated: Yes  
Finished: Yes  
Enclosed: Yes  
Contiguous: Yes  
Permitted: Yes  
Wet space: No  
Addition: No  
Conversion: No

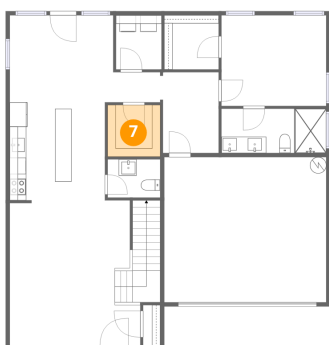
**6** Floor 1 - Bath



Dimensions: 6'5" x 4'8"  
Area: 30 sq. ft  
Counted as living area: Yes

Heated: Yes  
Finished: Yes  
Enclosed: Yes  
Contiguous: Yes  
Permitted: Yes  
Wet space: Yes  
Addition: No  
Conversion: No

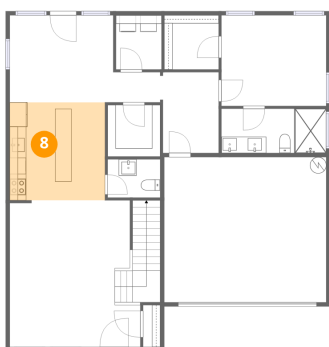
**7** Floor 1 - W.I.C.



Dimensions: 6'5" x 6'4"  
Area: 40 sq. ft  
Counted as living area: Yes

Heated: Yes  
Finished: Yes  
Enclosed: Yes  
Contiguous: Yes  
Permitted: Yes  
Wet space: No  
Addition: No  
Conversion: No

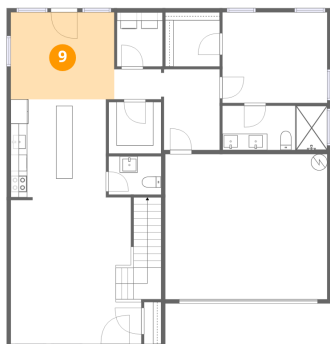
**8** Floor 1 - Kitchen



Dimensions: 11'7" x 12'0"  
Area: 139 sq. ft  
Counted as living area: Yes

Heated: Yes  
Finished: Yes  
Enclosed: Yes  
Contiguous: Yes  
Permitted: Yes  
Wet space: No  
Addition: No  
Conversion: No

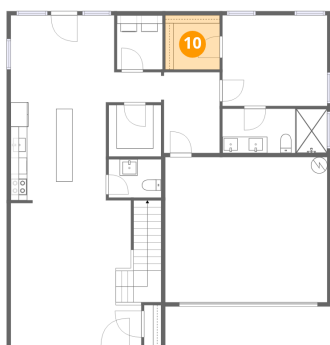
### 9 Floor 1 - Dining Area



Dimensions: 12'8" x 10'8"  
Area: 134 sq. ft  
Counted as living area: Yes

Heated: Yes  
Finished: Yes  
Enclosed: Yes  
Contiguous: Yes  
Permitted: Yes  
Wet space: No  
Addition: No  
Conversion: No

### 10 Floor 1 - W.I.C.



Dimensions: 6'8" x 6'7"  
Area: 44 sq. ft  
Counted as living area: Yes

Heated: Yes  
Finished: Yes  
Enclosed: Yes  
Contiguous: Yes  
Permitted: Yes  
Wet space: No  
Addition: No  
Conversion: No

### 11 Floor 1 - Bath



Dimensions: 12'10" x 5'5"  
Area: 69 sq. ft  
Counted as living area: Yes

Heated: Yes  
Finished: Yes  
Enclosed: Yes  
Contiguous: Yes  
Permitted: Yes  
Wet space: Yes  
Addition: No  
Conversion: No

**12** Floor 2 - W.I.C.



Dimensions: 2'5" x 8'2"  
Area: 20 sq. ft  
Counted as living area: Yes

Heated: Yes  
Finished: Yes  
Enclosed: Yes  
Contiguous: Yes  
Permitted: Yes  
Wet space: No  
Addition: No  
Conversion: No

**13** Floor 2 - Bedroom



Dimensions: 10'2" x 11'1"  
Area: 112 sq. ft  
Counted as living area: Yes

Heated: Yes  
Finished: Yes  
Enclosed: Yes  
Contiguous: Yes  
Permitted: Yes  
Wet space: No  
Addition: No  
Conversion: No

**14** Floor 2 - Primary Bedroom



Dimensions: 13'1" x 10'3"  
Area: 134 sq. ft  
Counted as living area: Yes

Heated: Yes  
Finished: Yes  
Enclosed: Yes  
Contiguous: Yes  
Permitted: Yes  
Wet space: No  
Addition: No  
Conversion: No

**15** Floor 2 - Bath



Dimensions: 4'9" x 10'0"  
Area: 48 sq. ft  
Counted as living area: Yes

Heated: Yes  
Finished: Yes  
Enclosed: Yes  
Contiguous: Yes  
Permitted: Yes  
Wet space: Yes  
Addition: No  
Conversion: No

**16** Floor 2 - Balcony



Dimensions: 18'8" x 6'2"  
Area: 115 sq. ft  
Counted as living area: No

Heated: No  
Finished: No  
Enclosed: No  
Contiguous: Yes  
Permitted: Yes  
Wet space: No  
Addition: No  
Conversion: No

**17** Floor 2 - Hall



Dimensions: 7'11" x 21'9"  
Area: 173 sq. ft  
Counted as living area: Yes

Heated: Yes  
Finished: Yes  
Enclosed: Yes  
Contiguous: Yes  
Permitted: Yes  
Wet space: No  
Addition: No  
Conversion: No

**18** Floor 2 - Bath



Dimensions: 5'0" x 8'4"  
Area: 42 sq. ft  
Counted as living area: Yes

Heated: Yes  
Finished: Yes  
Enclosed: Yes  
Contiguous: Yes  
Permitted: Yes  
Wet space: Yes  
Addition: No  
Conversion: No

**19** Floor 2 - Sitting Room



Dimensions: 15'7" x 8'2"  
Area: 128 sq. ft  
Counted as living area: Yes

Heated: Yes  
Finished: Yes  
Enclosed: Yes  
Contiguous: Yes  
Permitted: Yes  
Wet space: No  
Addition: No  
Conversion: No

**20** Floor 2 - W.I.C.



Dimensions: 4'11" x 6'3"  
Area: 31 sq. ft  
Counted as living area: Yes

Heated: Yes  
Finished: Yes  
Enclosed: Yes  
Contiguous: Yes  
Permitted: Yes  
Wet space: No  
Addition: No  
Conversion: No