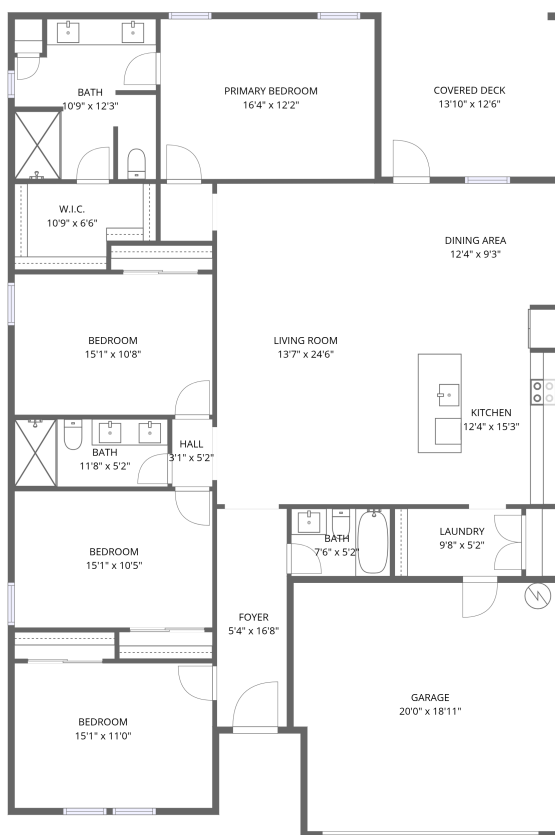


Home data report

10153 Lynhaven Road, Spring Hill, Hernando County, Florida,  
United States, 34608



1st floor

**Total Area: 2284 sq. ft**

1st Floor: 2284 sq. ft

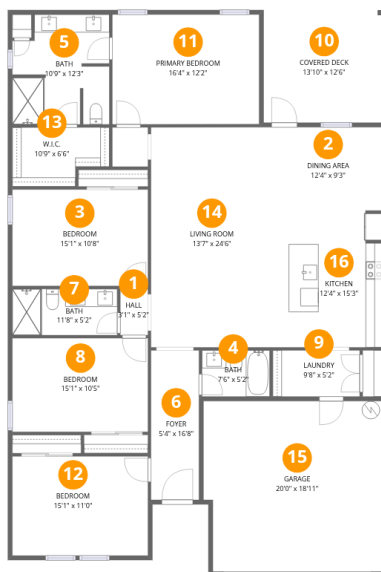
Excluded: Covered deck 174 sq. ft, Walls: 126 sq. ft

## Property summary



## Home data report

10153 Lynhaven Road, Spring Hill, Hernando County, Florida, United States, 34608



## Room dimensions

Floor 1

Total:2284sqft Excluded: 174sqft

#		Dimensions	sqft	Counted as living area
1	Hall	3'1" x 5'2"	16 sq. ft	Yes
2	Dining Area	12'4" x 9'3"	114 sq. ft	Yes
3	Bedroom	15'1" x 10'8"	161 sq. ft	Yes
4	Bath	7'6" x 5'2"	39 sq. ft	Yes
5	Bath	10'9" x 12'3"	132 sq. ft	Yes
6	Foyer	5'4" x 16'8"	89 sq. ft	Yes
7	Bath	11'8" x 5'2"	60 sq. ft	Yes
8	Bedroom	15'1" x 10'5"	157 sq. ft	Yes
9	Laundry	9'8" x 5'2"	50 sq. ft	Yes
10	Covered Deck	13'10" x 12'6"	174 sq. ft	No
11	Primary Bedroom	16'4" x 12'2"	199 sq. ft	Yes

Home data report

**10153 Lynhaven Road, Spring Hill, Hernando County, Florida,  
United States, 34608**

#		Dimensions	sqft	Counted as living area
12	Bedroom	15'1" x 11'0"	166 sq. ft	Yes
13	W.I.C.	10'9" x 6'6"	70 sq. ft	Yes
14	Living Room	13'7" x 24'6"	332 sq. ft	Yes
15	Garage	20'0" x 18'11"	380 sq. ft	Yes
16	Kitchen	12'4" x 15'3"	188 sq. ft	Yes

10153 Lynhaven Road, Spring Hill, Hernando County, Florida,  
United States, 34608

## 1 Floor 1 - Hall

---



Dimensions: 3'1" x 5'2"  
Area: 16 sq. ft  
Counted as living area: Yes

Heated: Yes  
Finished: Yes  
Enclosed: Yes  
Contiguous: Yes  
Permitted: Yes  
Wet space: No  
Addition: No  
Conversion: No

## 2 Floor 1 - Dining Area

---

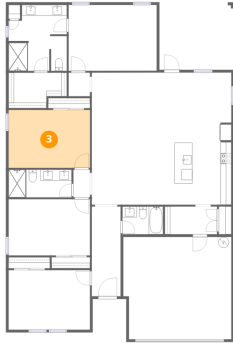


Dimensions: 12'4" x 9'3"  
Area: 114 sq. ft  
Counted as living area: Yes

Heated: Yes  
Finished: Yes  
Enclosed: Yes  
Contiguous: Yes  
Permitted: Yes  
Wet space: No  
Addition: No  
Conversion: No

10153 Lynhaven Road, Spring Hill, Hernando County, Florida,  
United States, 34608

### 3 Floor 1 - Bedroom



Dimensions: 15'1" x 10'8"  
Area: 161 sq. ft  
Counted as living area: Yes

Heated: Yes  
Finished: Yes  
Enclosed: Yes  
Contiguous: Yes  
Permitted: Yes  
Wet space: No  
Addition: No  
Conversion: No

### 4 Floor 1 - Bath



Dimensions: 7'6" x 5'2"  
Area: 39 sq. ft  
Counted as living area: Yes

Heated: Yes  
Finished: Yes  
Enclosed: Yes  
Contiguous: Yes  
Permitted: Yes  
Wet space: Yes  
Addition: No  
Conversion: No

### 5 Floor 1 - Bath

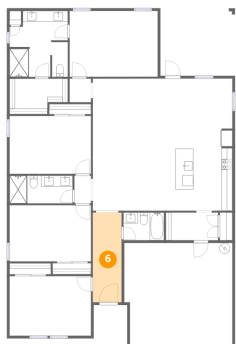


Dimensions: 10'9" x 12'3"  
Area: 132 sq. ft  
Counted as living area: Yes

Heated: Yes  
Finished: Yes  
Enclosed: Yes  
Contiguous: Yes  
Permitted: Yes  
Wet space: Yes  
Addition: No  
Conversion: No

10153 Lynhaven Road, Spring Hill, Hernando County, Florida,  
United States, 34608

### 6 Floor 1 - Foyer



Dimensions: 5'4" x 16'8"  
Area: 89 sq. ft  
Counted as living area: Yes

Heated: Yes  
Finished: Yes  
Enclosed: Yes  
Contiguous: Yes  
Permitted: Yes  
Wet space: No  
Addition: No  
Conversion: No

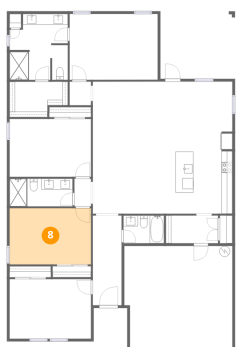
### 7 Floor 1 - Bath



Dimensions: 11'8" x 5'2"  
Area: 60 sq. ft  
Counted as living area: Yes

Heated: Yes  
Finished: Yes  
Enclosed: Yes  
Contiguous: Yes  
Permitted: Yes  
Wet space: Yes  
Addition: No  
Conversion: No

### 8 Floor 1 - Bedroom



Dimensions: 15'1" x 10'5"  
Area: 157 sq. ft  
Counted as living area: Yes

Heated: Yes  
Finished: Yes  
Enclosed: Yes  
Contiguous: Yes  
Permitted: Yes  
Wet space: No  
Addition: No  
Conversion: No

10153 Lynhaven Road, Spring Hill, Hernando County, Florida,  
United States, 34608

## 9 Floor 1 - Laundry



Dimensions: 9'8" x 5'2"  
Area: 50 sq. ft  
Counted as living area: Yes

Heated: Yes  
Finished: Yes  
Enclosed: Yes  
Contiguous: Yes  
Permitted: Yes  
Wet space: No  
Addition: No  
Conversion: No

## 10 Floor 1 - Covered Deck



Dimensions: 13'10" x 12'6"  
Area: 174 sq. ft  
Counted as living area: No

Heated: No  
Finished: No  
Enclosed: No  
Contiguous: Yes  
Permitted: Yes  
Wet space: No  
Addition: No  
Conversion: No

## 11 Floor 1 - Primary Bedroom



Dimensions: 16'4" x 12'2"  
Area: 199 sq. ft  
Counted as living area: Yes

Heated: Yes  
Finished: Yes  
Enclosed: Yes  
Contiguous: Yes  
Permitted: Yes  
Wet space: No  
Addition: No  
Conversion: No

10153 Lynhaven Road, Spring Hill, Hernando County, Florida,  
United States, 34608

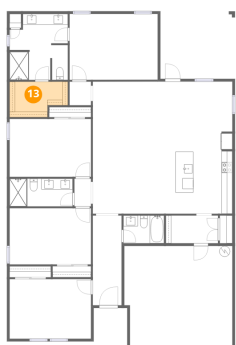
## 12 Floor 1 - Bedroom



Dimensions: 15'1" x 11'0"  
Area: 166 sq. ft  
Counted as living area: Yes

Heated: Yes  
Finished: Yes  
Enclosed: Yes  
Contiguous: Yes  
Permitted: Yes  
Wet space: No  
Addition: No  
Conversion: No

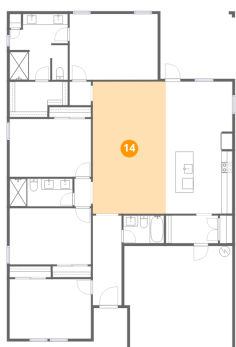
## 13 Floor 1 - W.I.C.



Dimensions: 10'9" x 6'6"  
Area: 70 sq. ft  
Counted as living area: Yes

Heated: Yes  
Finished: Yes  
Enclosed: Yes  
Contiguous: Yes  
Permitted: Yes  
Wet space: No  
Addition: No  
Conversion: No

## 14 Floor 1 - Living Room



Dimensions: 13'7" x 24'6"  
Area: 332 sq. ft  
Counted as living area: Yes

Heated: Yes  
Finished: Yes  
Enclosed: Yes  
Contiguous: Yes  
Permitted: Yes  
Wet space: No  
Addition: No  
Conversion: No

10153 Lynhaven Road, Spring Hill, Hernando County, Florida,  
United States, 34608

**15** Floor 1 - Garage

---



Dimensions: 20'0" x 18'11"  
Area: 380 sq. ft  
Counted as living area: No

Heated: No  
Finished: Yes  
Enclosed: Yes  
Contiguous: Yes  
Permitted: Yes  
Wet space: No  
Addition: No  
Conversion: No

**16** Floor 1 - Kitchen

---



Dimensions: 12'4" x 15'3"  
Area: 188 sq. ft  
Counted as living area: Yes

Heated: Yes  
Finished: Yes  
Enclosed: Yes  
Contiguous: Yes  
Permitted: Yes  
Wet space: No  
Addition: No  
Conversion: No