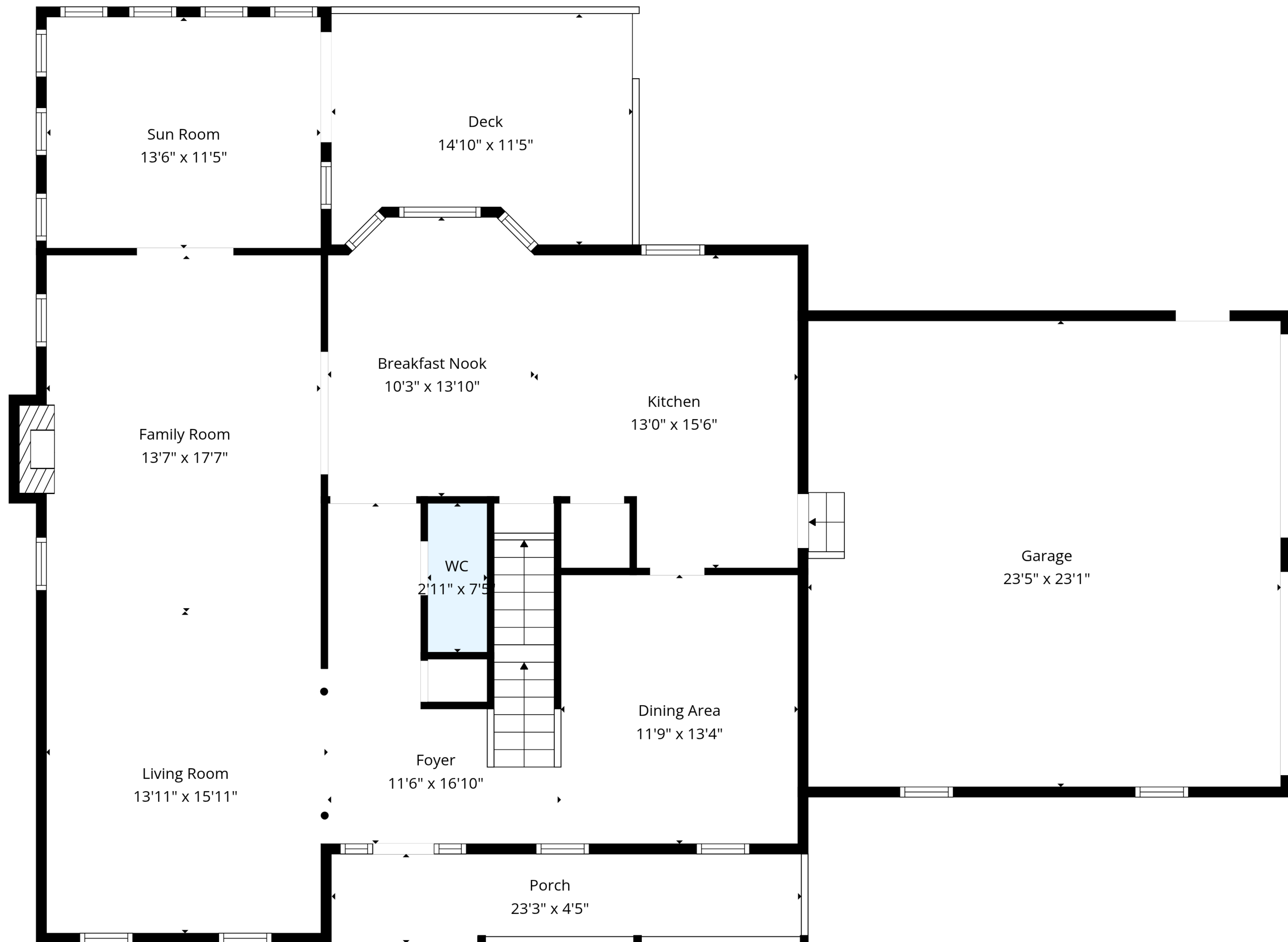


TOTAL: 3884 sq. ft

Basement: 982 sq. ft, Ground floor: 1319 sq. ft, 1st floor: 1583 sq. ft, 2nd floor: 0 sq. ft
 EXCLUDED AREAS: UTILITY: 43 sq. ft, DECK: 156 sq. ft, PORCH: 98 sq. ft,
 GARAGE: 539 sq. ft, FIREPLACE: 7 sq. ft, LOW CEILING: 426 sq. ft,
 ATTIC: 657 sq. ft, WALLS: 351 sq. ft

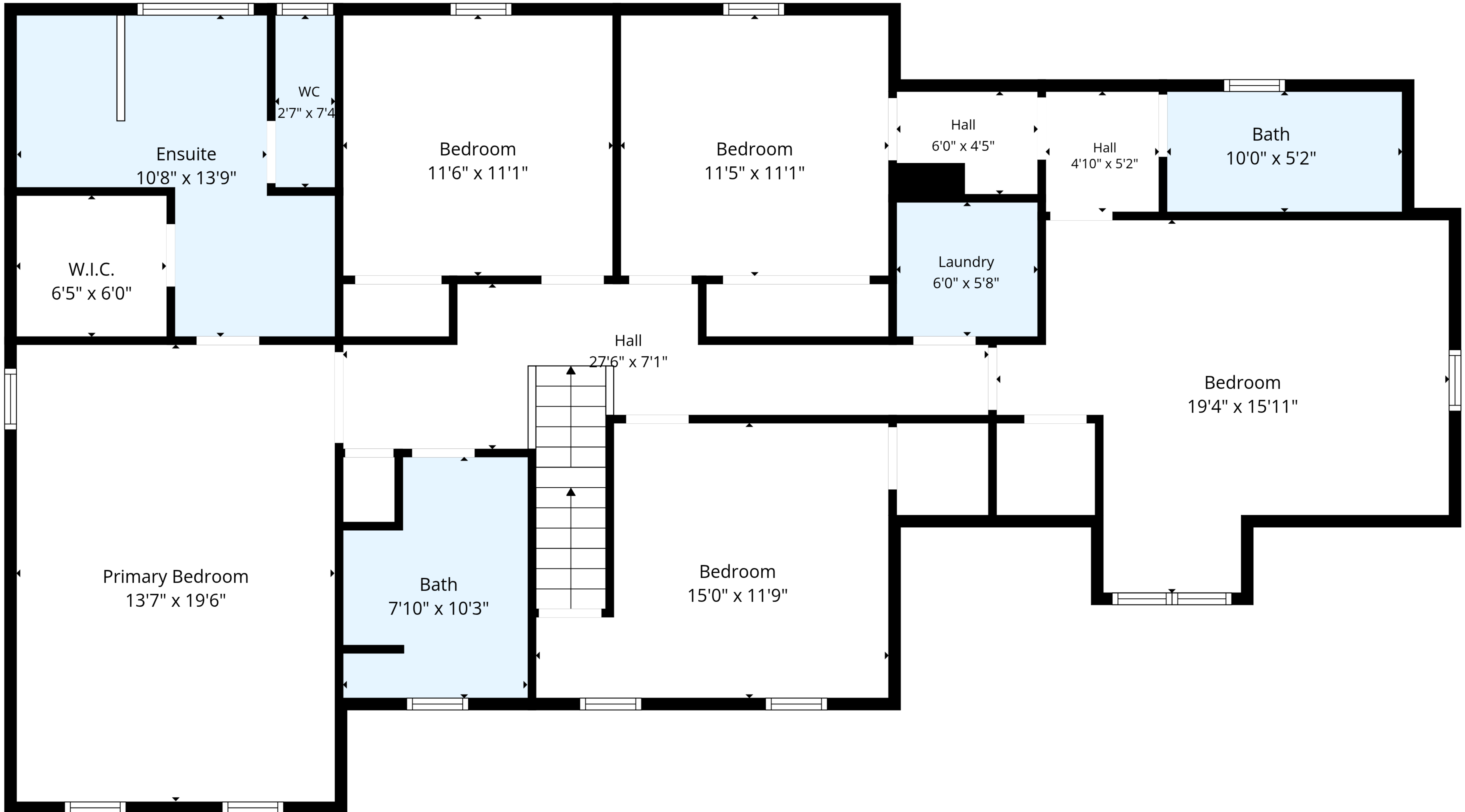




TOTAL: 3884 sq. ft

Basement: 982 sq. ft, Ground floor: 1319 sq. ft, 1st floor: 1583 sq. ft, 2nd floor: 0 sq. ft
 EXCLUDED AREAS: UTILITY: 43 sq. ft, DECK: 156 sq. ft, PORCH: 98 sq. ft,
 GARAGE: 539 sq. ft, FIREPLACE: 7 sq. ft, LOW CEILING: 426 sq. ft,
 ATTIC: 657 sq. ft, WALLS: 351 sq. ft

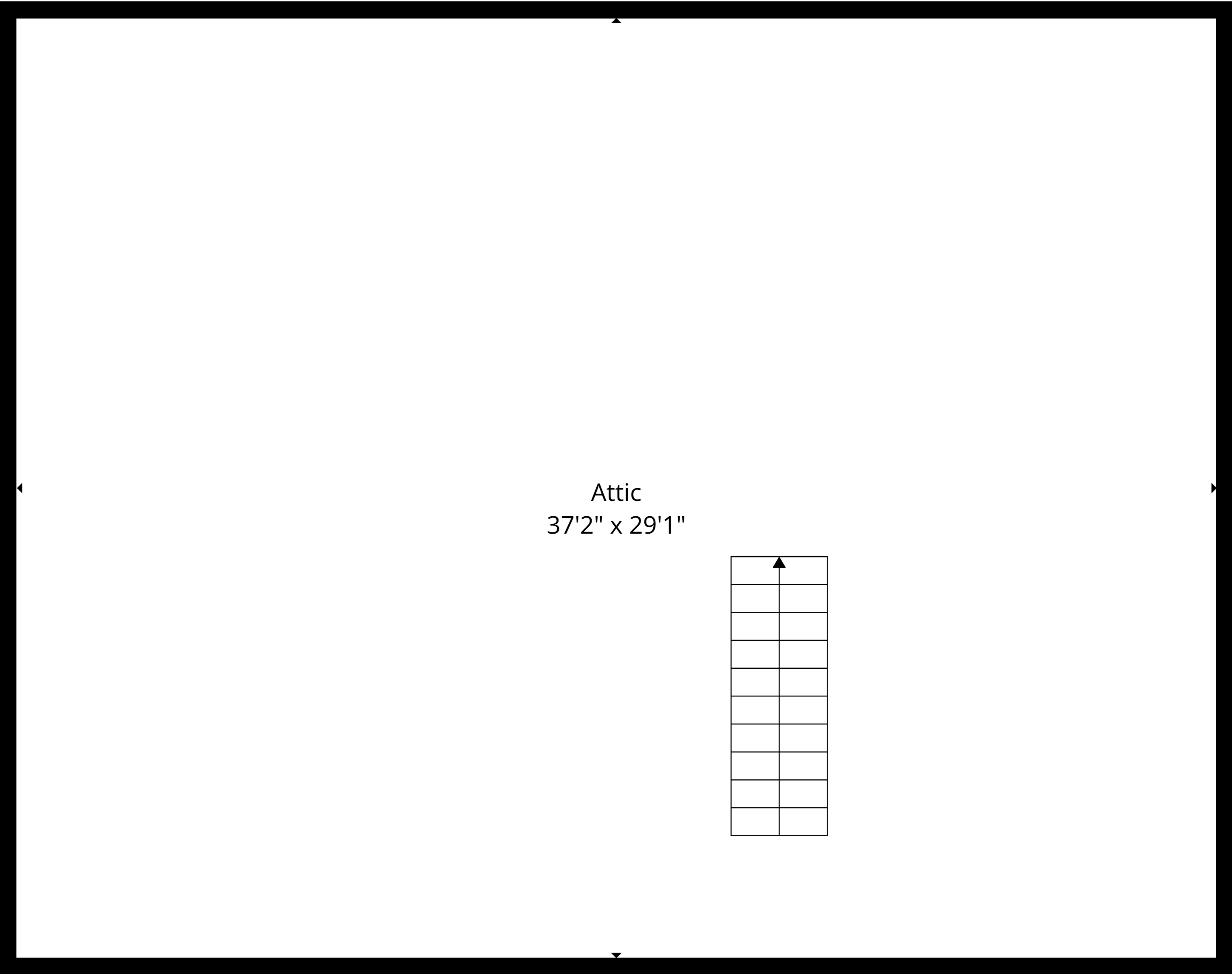




TOTAL: 3884 sq. ft

Basement: 982 sq. ft, Ground floor: 1319 sq. ft, 1st floor: 1583 sq. ft, 2nd floor: 0 sq. ft
 EXCLUDED AREAS: UTILITY: 43 sq. ft, DECK: 156 sq. ft, PORCH: 98 sq. ft,
 GARAGE: 539 sq. ft, FIREPLACE: 7 sq. ft, LOW CEILING: 426 sq. ft,
 ATTIC: 657 sq. ft, WALLS: 351 sq. ft





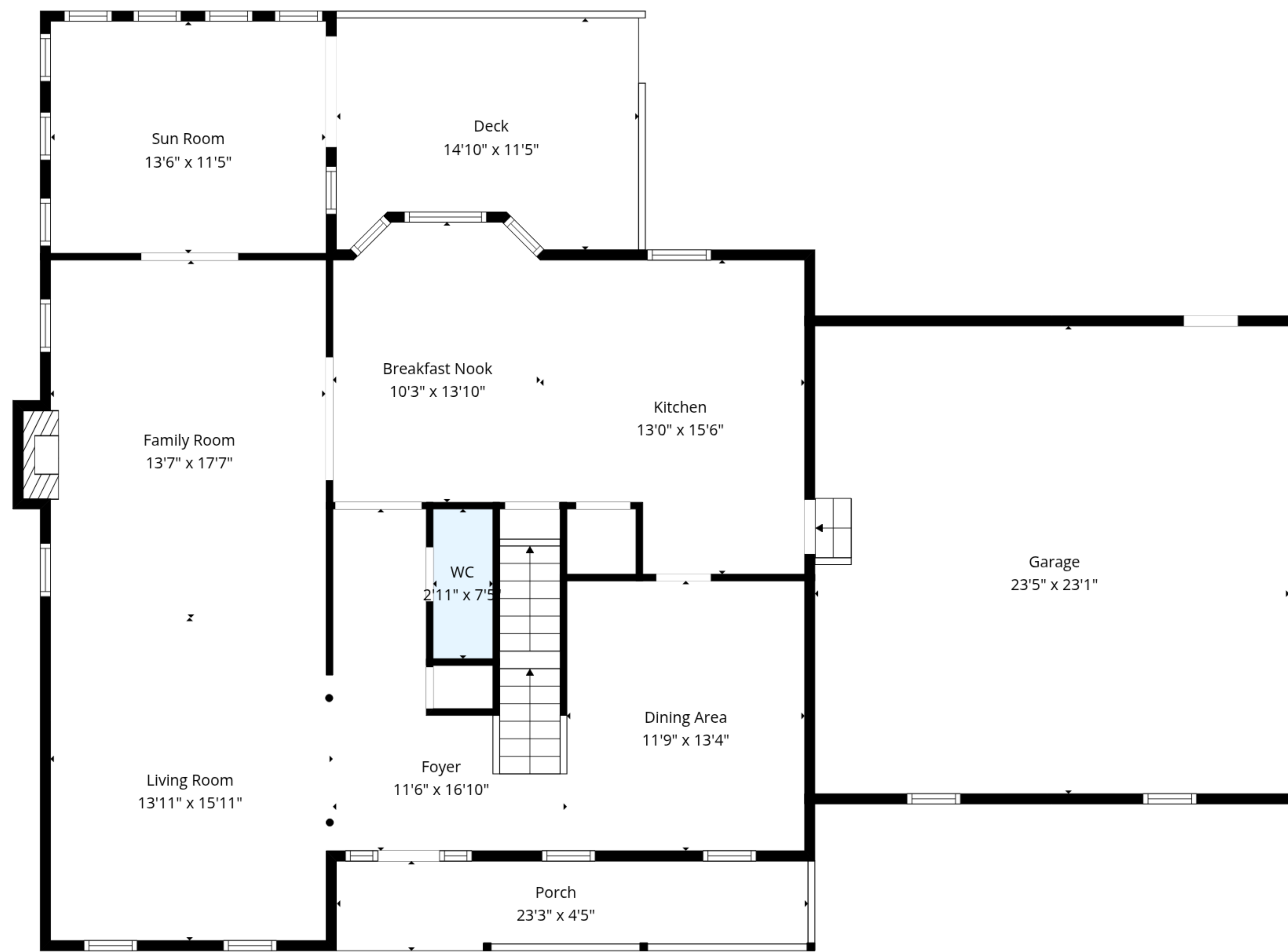
Attic
37'2" x 29'1"

	↑

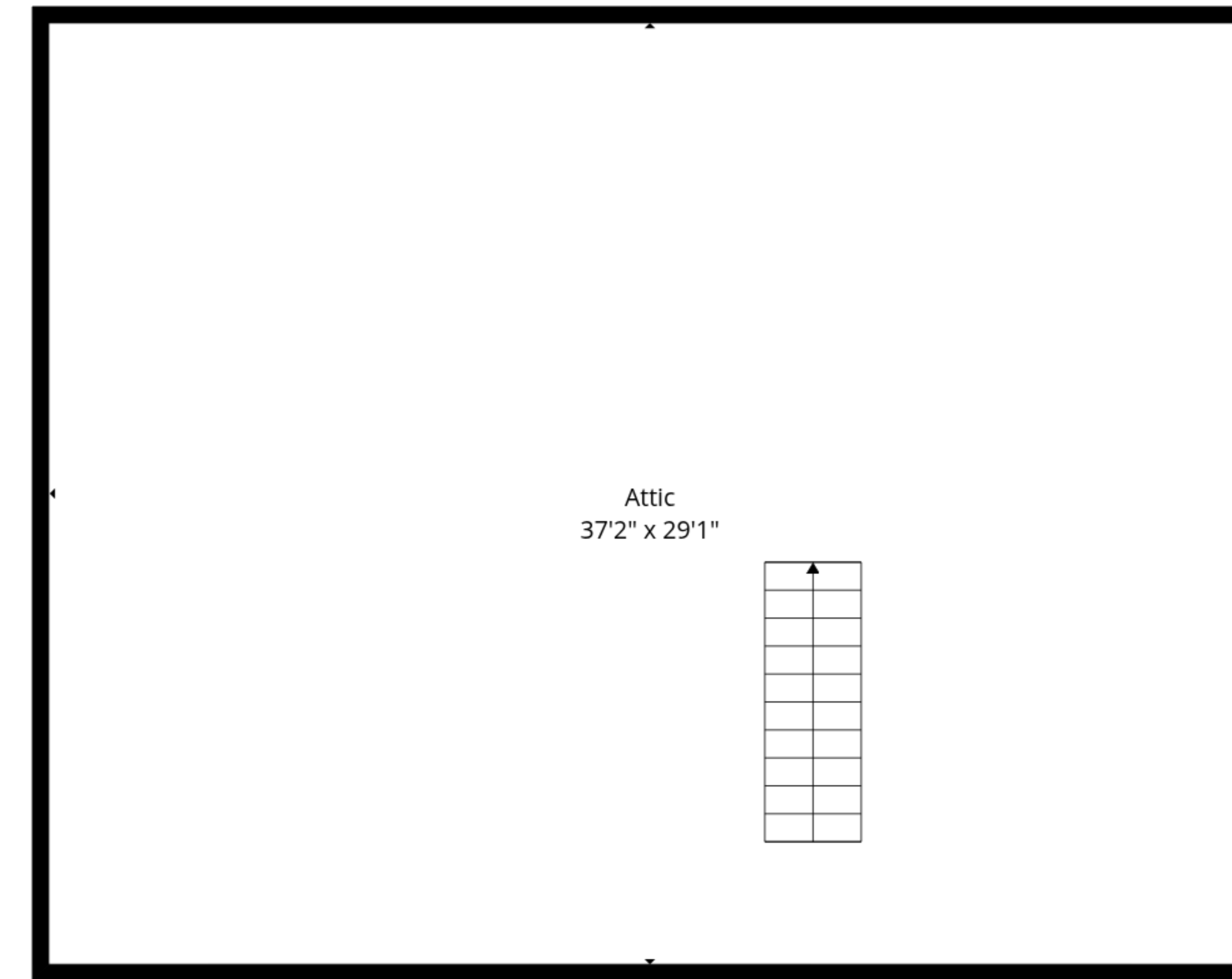
TOTAL: 3884 sq. ft

Basement: 982 sq. ft, Ground floor: 1319 sq. ft, 1st floor: 1583 sq. ft, 2nd floor: 0 sq. ft
EXCLUDED AREAS: UTILITY: 43 sq. ft, DECK: 156 sq. ft, PORCH: 98 sq. ft,
GARAGE: 539 sq. ft, FIREPLACE: 7 sq. ft, LOW CEILING: 426 sq. ft,
ATTIC: 657 sq. ft, WALLS: 351 sq. ft

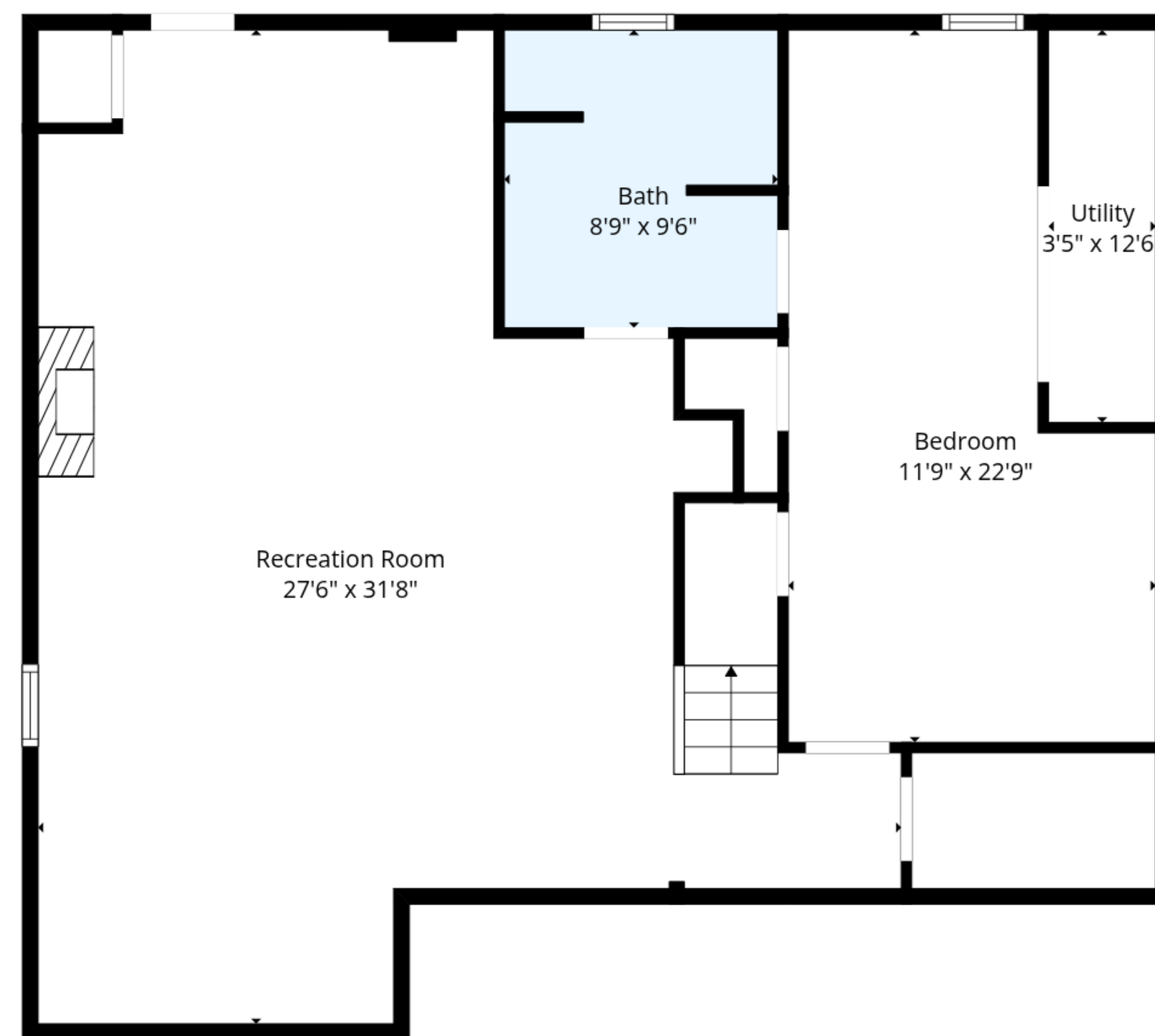




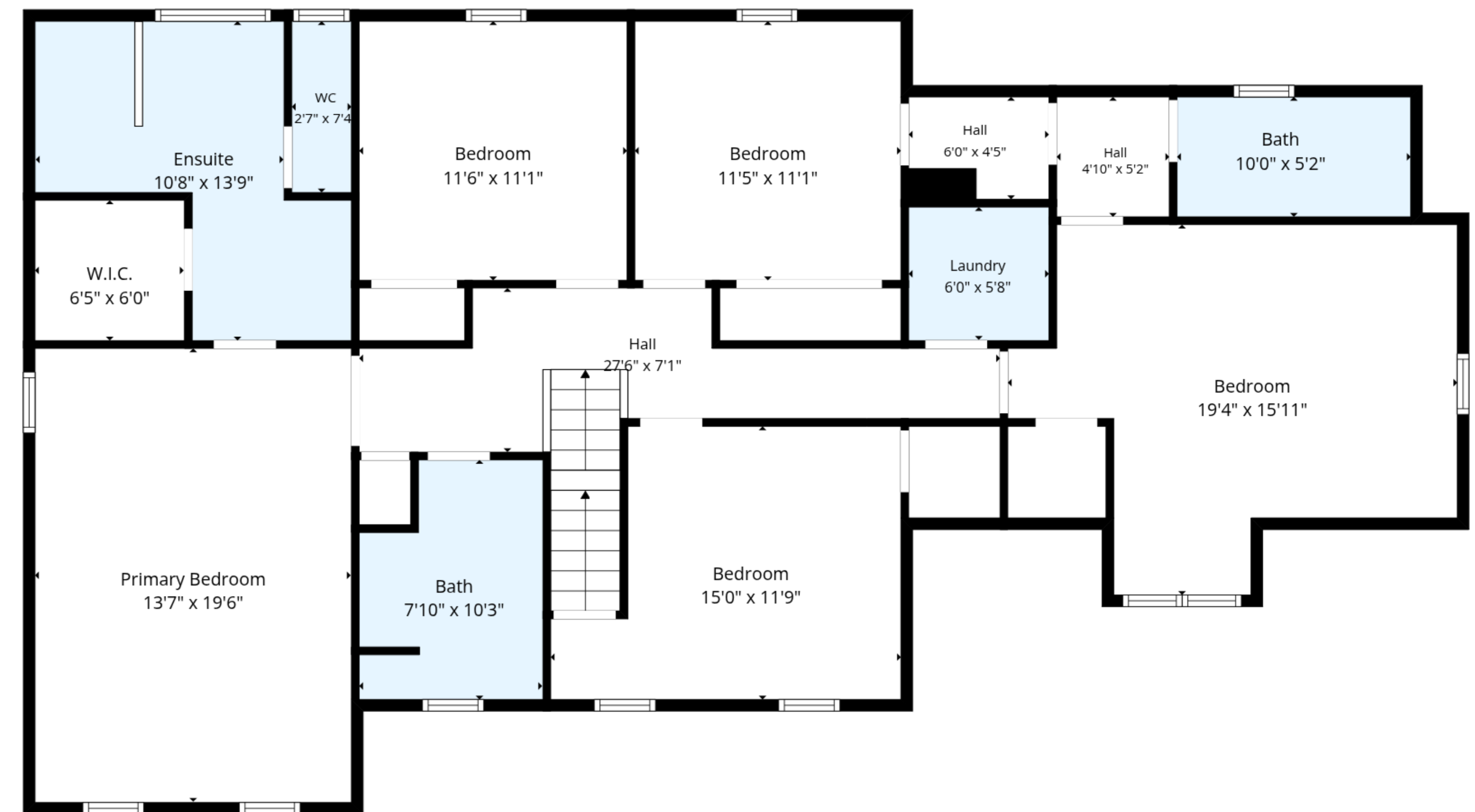
Ground Floor



2nd Floor



Basement



1st Floor

TOTAL: 3884 sq. ft

Basement: 982 sq. ft, Ground floor: 1319 sq. ft, 1st floor: 1583 sq. ft, 2nd floor: 0 sq. ft
 EXCLUDED AREAS: UTILITY: 43 sq. ft, DECK: 156 sq. ft, PORCH: 98 sq. ft,
 GARAGE: 539 sq. ft, FIREPLACE: 7 sq. ft, LOW CEILING: 426 sq. ft,
 ATTIC: 657 sq. ft, WALLS: 351 sq. ft

