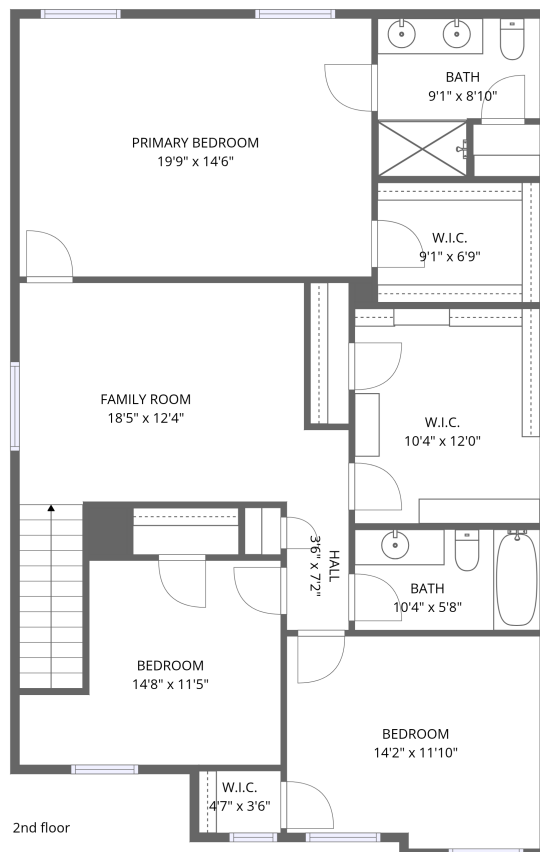
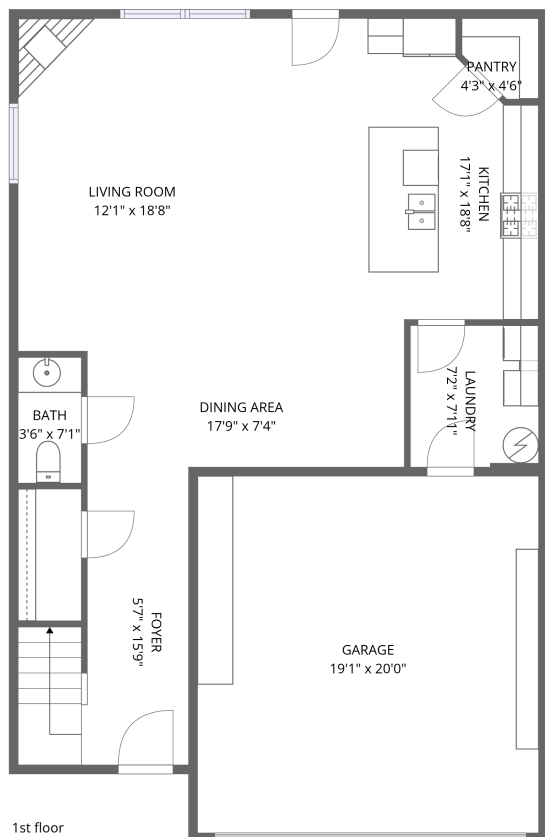


11901 Parkview Trace Dr, Louisville, KY, US



Total Area: 2335 sq. ft

1st Floor: 962 sq. ft, 2nd Floor: 1373 sq. ft

Excluded: Garage 403 sq. ft

Property summary



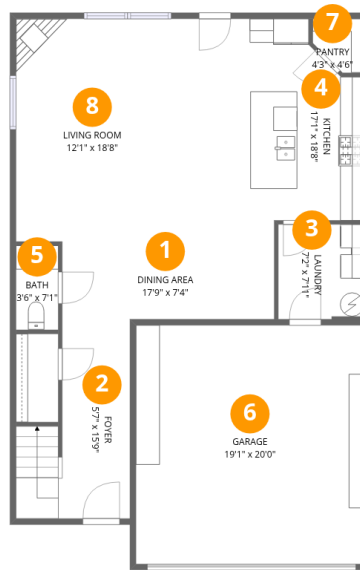
Home data report

11901 Parkview Trace Dr,Louisville,KY,US

 **1**
Half baths

 **1**
Garages

11901 Parkview Trace Dr,Louisville,KY,US



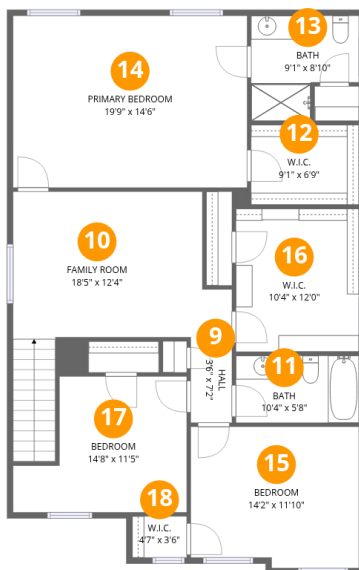
Room dimensions

Floor 1

Total:962sqft

Excluded: 403sqft

#		Dimensions	sqft	Counted as living area
1	Dining Area	17'9" x 7'4"	130 sq. ft	Yes
2	Foyer	5'7" x 15'9"	88 sq. ft	Yes
3	Laundry	7'2" x 7'11"	57 sq. ft	Yes
4	Kitchen	17'1" x 18'8"	318 sq. ft	Yes
5	Bath	3'6" x 7'1"	25 sq. ft	Yes
6	Garage	19'1" x 20'0"	381 sq. ft	No
7	Pantry	4'3" x 4'6"	19 sq. ft	Yes
8	Living Room	12'1" x 18'8"	225 sq. ft	Yes



Room dimensions

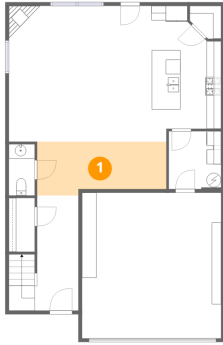
Floor 2

Total:1373sqft

Excluded: 0sqft

#		Dimensions	sqft	Counted as living area
9	Hall	3'6" x 7'2"	25 sq. ft	Yes
10	Family Room	18'5" x 12'4"	227 sq. ft	Yes
11	Bath	10'4" x 5'8"	58 sq. ft	Yes
12	W.I.C.	9'1" x 6'9"	61 sq. ft	Yes
13	Bath	9'1" x 8'10"	80 sq. ft	Yes
14	Primary Bedroom	19'9" x 14'6"	285 sq. ft	Yes
15	Bedroom	14'2" x 11'10"	168 sq. ft	Yes
16	W.I.C.	10'4" x 12'0"	125 sq. ft	Yes
17	Bedroom	14'8" x 11'5"	167 sq. ft	Yes
18	W.I.C.	4'7" x 3'6"	16 sq. ft	Yes

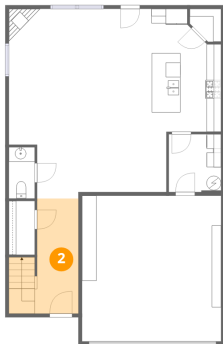
1 Floor 1 - Dining Area



Dimensions: 17'9" x 7'4"
Area: 130 sq. ft
Counted as living area: Yes

Heated: Yes
Finished: Yes
Enclosed: Yes
Contiguous: Yes
Permitted: Yes
Wet space: No
Addition: No
Conversion: No

2 Floor 1 - Foyer



Dimensions: 5'7" x 15'9"
Area: 88 sq. ft
Counted as living area: Yes

Heated: Yes
Finished: Yes
Enclosed: Yes
Contiguous: Yes
Permitted: Yes
Wet space: No
Addition: No
Conversion: No

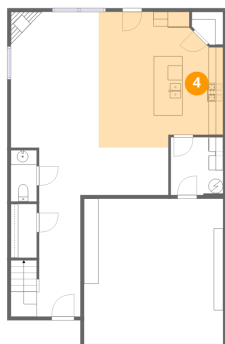
3 Floor 1 - Laundry



Dimensions: 7'2" x 7'11"
Area: 57 sq. ft
Counted as living area: Yes

Heated: Yes
Finished: Yes
Enclosed: Yes
Contiguous: Yes
Permitted: Yes
Wet space: No
Addition: No
Conversion: No

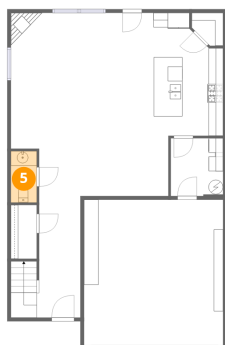
4 Floor 1 - Kitchen



Dimensions: 17'1" x 18'8"
Area: 318 sq. ft
Counted as living area: Yes

Heated: Yes
Finished: Yes
Enclosed: Yes
Contiguous: Yes
Permitted: Yes
Wet space: No
Addition: No
Conversion: No

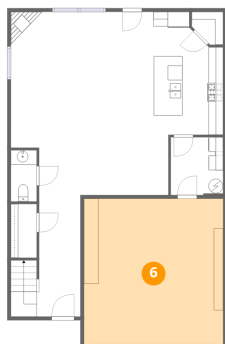
5 Floor 1 - Bath



Dimensions: 3'6" x 7'1"
Area: 25 sq. ft
Counted as living area: Yes

Heated: Yes
Finished: Yes
Enclosed: Yes
Contiguous: Yes
Permitted: Yes
Wet space: Yes
Addition: No
Conversion: No

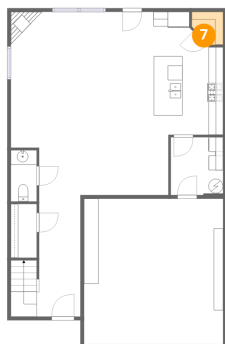
6 Floor 1 - Garage



Dimensions: 19'1" x 20'0"
Area: 381 sq. ft
Counted as living area: No

Heated: No
Finished: No
Enclosed: Yes
Contiguous: Yes
Permitted: Yes
Wet space: No
Addition: No
Conversion: No

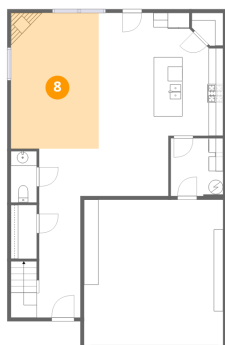
7 Floor 1 - Pantry



Dimensions: 4'3" x 4'6"
Area: 19 sq. ft
Counted as living area: Yes

Heated: Yes
Finished: Yes
Enclosed: Yes
Contiguous: Yes
Permitted: Yes
Wet space: No
Addition: No
Conversion: No

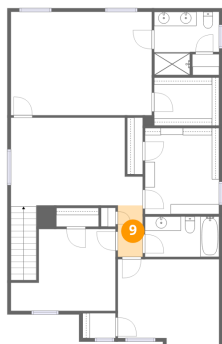
8 Floor 1 - Living Room



Dimensions: 12'1" x 18'8"
Area: 225 sq. ft
Counted as living area: Yes

Heated: Yes
Finished: Yes
Enclosed: Yes
Contiguous: Yes
Permitted: Yes
Wet space: No
Addition: No
Conversion: No

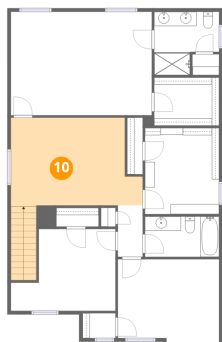
9 Floor 2 - Hall



Dimensions: 3'6" x 7'2"
Area: 25 sq. ft
Counted as living area: Yes

Heated: Yes
Finished: Yes
Enclosed: Yes
Contiguous: Yes
Permitted: Yes
Wet space: No
Addition: No
Conversion: No

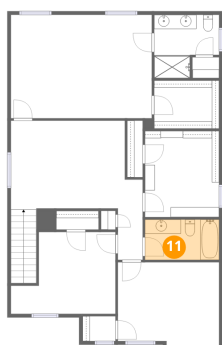
10 Floor 2 - Family Room



Dimensions: 18'5" x 12'4"
Area: 227 sq. ft
Counted as living area: Yes

Heated: Yes
Finished: Yes
Enclosed: Yes
Contiguous: Yes
Permitted: Yes
Wet space: No
Addition: No
Conversion: No

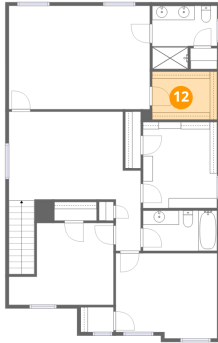
11 Floor 2 - Bath



Dimensions: 10'4" x 5'8"
Area: 58 sq. ft
Counted as living area: Yes

Heated: Yes
Finished: Yes
Enclosed: Yes
Contiguous: Yes
Permitted: Yes
Wet space: Yes
Addition: No
Conversion: No

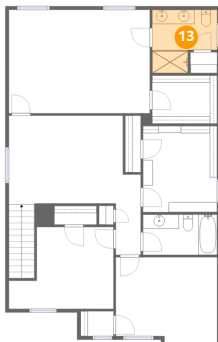
12 Floor 2 - W.I.C.



Dimensions: 9'1" x 6'9"
Area: 61 sq. ft
Counted as living area: Yes

Heated: Yes
Finished: Yes
Enclosed: Yes
Contiguous: Yes
Permitted: Yes
Wet space: No
Addition: No
Conversion: No

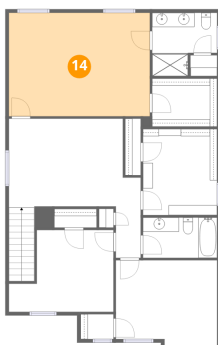
13 Floor 2 - Bath



Dimensions: 9'1" x 8'10"
Area: 80 sq. ft
Counted as living area: Yes

Heated: Yes
Finished: Yes
Enclosed: Yes
Contiguous: Yes
Permitted: Yes
Wet space: Yes
Addition: No
Conversion: No

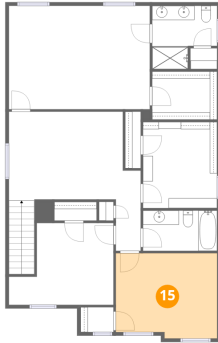
14 Floor 2 - Primary Bedroom



Dimensions: 19'9" x 14'6"
Area: 285 sq. ft
Counted as living area: Yes

Heated: Yes
Finished: Yes
Enclosed: Yes
Contiguous: Yes
Permitted: Yes
Wet space: No
Addition: No
Conversion: No

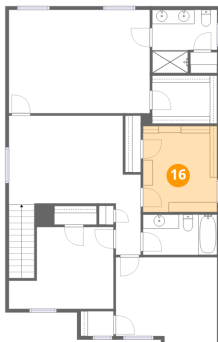
15 Floor 2 - Bedroom



Dimensions: 14'2" x 11'10"
Area: 168 sq. ft
Counted as living area: Yes

Heated: Yes
Finished: Yes
Enclosed: Yes
Contiguous: Yes
Permitted: Yes
Wet space: No
Addition: No
Conversion: No

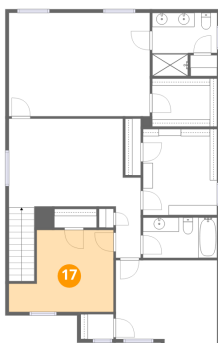
16 Floor 2 - W.I.C.



Dimensions: 10'4" x 12'0"
Area: 125 sq. ft
Counted as living area: Yes

Heated: Yes
Finished: Yes
Enclosed: Yes
Contiguous: Yes
Permitted: Yes
Wet space: No
Addition: No
Conversion: No

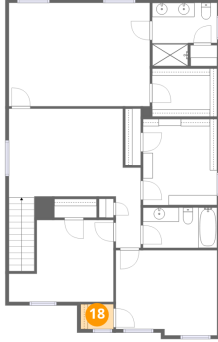
17 Floor 2 - Bedroom



Dimensions: 14'8" x 11'5"
Area: 167 sq. ft
Counted as living area: Yes

Heated: Yes
Finished: Yes
Enclosed: Yes
Contiguous: Yes
Permitted: Yes
Wet space: No
Addition: No
Conversion: No

18 Floor 2 - W.I.C.



Dimensions: 4'7" x 3'6"
Area: 16 sq. ft
Counted as living area: Yes

Heated: Yes
Finished: Yes
Enclosed: Yes
Contiguous: Yes
Permitted: Yes
Wet space: No
Addition: No
Conversion: No