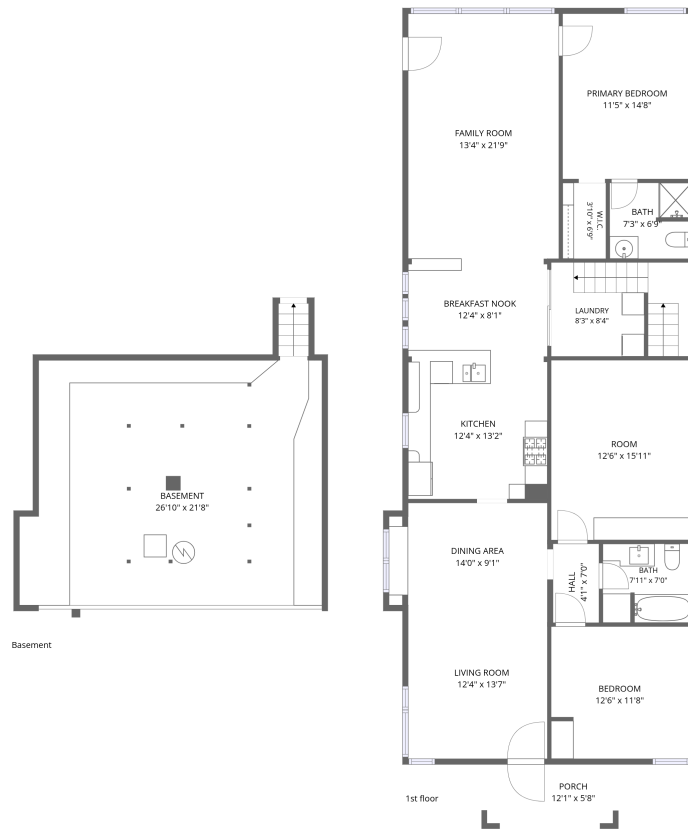


Home data report

300 W Cleveland St, Lafayette, CO, US

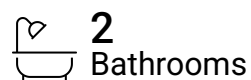
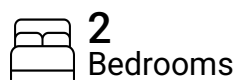


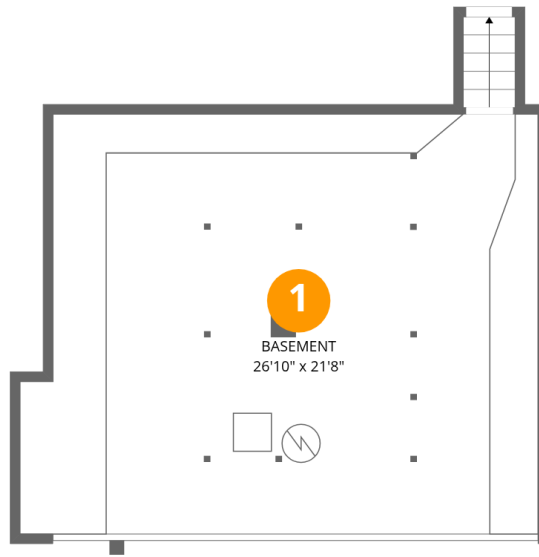
Total Area: 1672 sq. ft

Basement: 0 sq. ft, 1st Floor: 1672 sq. ft

Excluded: Basement 560 sq. ft, Undefined 13 sq. ft, Porch 69 sq. ft, Walls: 136 sq. ft

Property summary





Room dimensions

Floor 1 Below grade

Total:0sqft

Excluded: 573sqft

#		Dimensions	sqft	Counted as living area
1	Basement	26'10" x 21'8"	559 sq. ft	No



Room dimensions

Floor 2

Total:1672sqft

Excluded: 69sqft

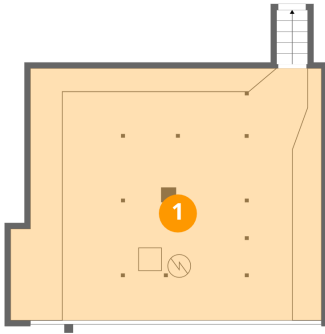
#		Dimensions	sqft	Counted as living area
2	Breakfast Nook	12'4" x 8'1"	100 sq. ft	Yes
3	Primary Bedroom	11'5" x 14'8"	168 sq. ft	Yes
4	Dining Area	14'0" x 9'1"	125 sq. ft	Yes
5	Room	12'6" x 15'11"	199 sq. ft	Yes
6	Kitchen	12'4" x 13'2"	160 sq. ft	Yes
7	Hall	4'1" x 7'0"	29 sq. ft	Yes
8	Laundry	8'3" x 8'4"	102 sq. ft	Yes
9	Living Room	12'4" x 13'7"	168 sq. ft	Yes
10	W.I.C.	3'10" x 6'9"	26 sq. ft	Yes
11	Bath	7'11" x 7'0"	54 sq. ft	Yes
12	Porch	12'1" x 5'8"	69 sq. ft	No

Home data report

300 W Cleveland St,Lafayette,CO,US

#		Dimensions	sqft	Counted as living area
13	Family Room	13'4" x 21'9"	290 sq. ft	Yes
14	Bedroom	12'6" x 11'8"	145 sq. ft	Yes
15	Bath	7'3" x 6'9"	48 sq. ft	Yes

1 Floor 1 - Basement



Dimensions: 26'10" x 21'8"
Area: 559 sq. ft
Counted as living area: No

Heated: Yes
Finished: No
Enclosed: Yes
Contiguous: Yes
Permitted: Yes
Wet space: No
Addition: No
Conversion: No

2 Floor 2 - Breakfast Nook



Dimensions: 12'4" x 8'1"
Area: 100 sq. ft
Counted as living area: Yes

Heated: Yes
Finished: Yes
Enclosed: Yes
Contiguous: Yes
Permitted: Yes
Wet space: No
Addition: No
Conversion: No

3 Floor 2 - Primary Bedroom



Dimensions: 11'5" x 14'8"
Area: 168 sq. ft
Counted as living area: Yes

Heated: Yes
Finished: Yes
Enclosed: Yes
Contiguous: Yes
Permitted: Yes
Wet space: No
Addition: No
Conversion: No

4 Floor 2 - Dining Area



Dimensions: 14'0" x 9'1"
Area: 125 sq. ft
Counted as living area: Yes

Heated: Yes
Finished: Yes
Enclosed: Yes
Contiguous: Yes
Permitted: Yes
Wet space: No
Addition: No
Conversion: No

5 Floor 2 - Room



Dimensions: 12'6" x 15'11"
Area: 199 sq. ft
Counted as living area: Yes

Heated: Yes
Finished: Yes
Enclosed: Yes
Contiguous: Yes
Permitted: Yes
Wet space: No
Addition: No
Conversion: No

6 Floor 2 - Kitchen



Dimensions: 12'4" x 13'2"
Area: 160 sq. ft
Counted as living area: Yes

Heated: Yes
Finished: Yes
Enclosed: Yes
Contiguous: Yes
Permitted: Yes
Wet space: No
Addition: No
Conversion: No

7 Floor 2 - Hall



Dimensions: 4'1" x 7'0"
Area: 29 sq. ft
Counted as living area: Yes

Heated: Yes
Finished: Yes
Enclosed: Yes
Contiguous: Yes
Permitted: Yes
Wet space: No
Addition: No
Conversion: No

8 Floor 2 - Laundry



Dimensions: 8'3" x 8'4"
Area: 102 sq. ft
Counted as living area: Yes

Heated: Yes
Finished: Yes
Enclosed: Yes
Contiguous: Yes
Permitted: Yes
Wet space: No
Addition: No
Conversion: No

9 Floor 2 - Living Room



Dimensions: 12'4" x 13'7"
Area: 168 sq. ft
Counted as living area: Yes

Heated: Yes
Finished: Yes
Enclosed: Yes
Contiguous: Yes
Permitted: Yes
Wet space: No
Addition: No
Conversion: No

10 Floor 2 - W.I.C.



Dimensions: 3'10" x 6'9"
Area: 26 sq. ft
Counted as living area: Yes

Heated: Yes
Finished: Yes
Enclosed: Yes
Contiguous: Yes
Permitted: Yes
Wet space: No
Addition: No
Conversion: No

11 Floor 2 - Bath



Dimensions: 7'11" x 7'0"
Area: 54 sq. ft
Counted as living area: Yes

Heated: Yes
Finished: Yes
Enclosed: Yes
Contiguous: Yes
Permitted: Yes
Wet space: Yes
Addition: No
Conversion: No

12 Floor 2 - Porch



Dimensions: 12'1" x 5'8"
Area: 69 sq. ft
Counted as living area: No

Heated: No
Finished: No
Enclosed: No
Contiguous: Yes
Permitted: Yes
Wet space: No
Addition: No
Conversion: No

13 Floor 2 - Family Room



Dimensions: 13'4" x 21'9"
Area: 290 sq. ft
Counted as living area: Yes

Heated: Yes
Finished: Yes
Enclosed: Yes
Contiguous: Yes
Permitted: Yes
Wet space: No
Addition: No
Conversion: No

14 Floor 2 - Bedroom



Dimensions: 12'6" x 11'8"
Area: 145 sq. ft
Counted as living area: Yes

Heated: Yes
Finished: Yes
Enclosed: Yes
Contiguous: Yes
Permitted: Yes
Wet space: No
Addition: No
Conversion: No

15 Floor 2 - Bath



Dimensions: 7'3" x 6'9"
Area: 48 sq. ft
Counted as living area: Yes

Heated: Yes
Finished: Yes
Enclosed: Yes
Contiguous: Yes
Permitted: Yes
Wet space: Yes
Addition: No
Conversion: No