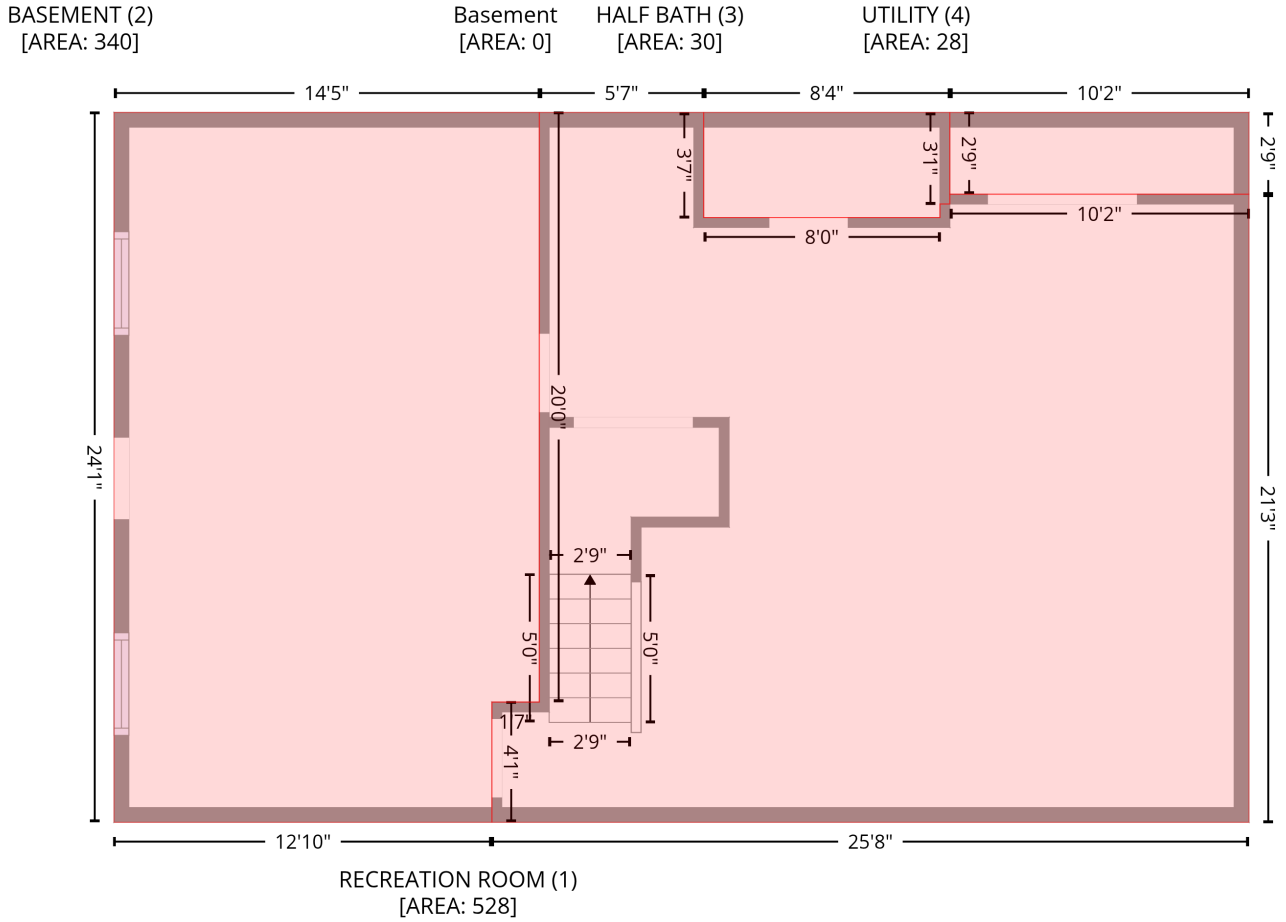


# 3497 Blue Creek Rd, Lenoir, NC, US

Gross Living Area: 2085 sq. ft

## Level 1 - Below Grade

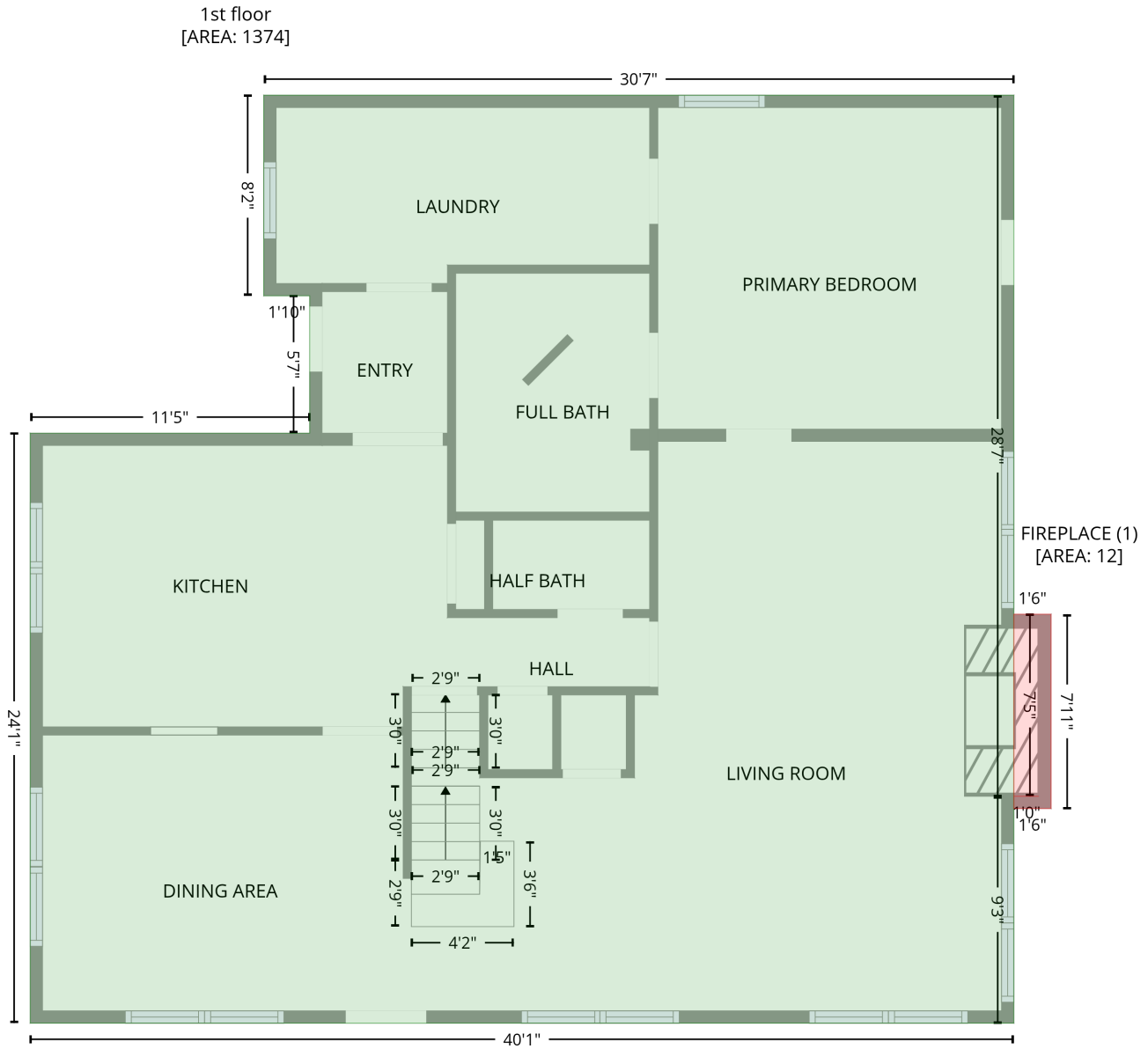


Space	Area (sq. ft)	Calculation <small>Coordinate Polygon Area Algorithm using inches</small>
RECREATION ROOM (Non-living area)	528	$-\left((265.6 + 265.6) * (167.2 - 210) + (265.6 + 361.8) * (210 - 210) + (361.8 + 361.8) * (210 - 204.5) + (361.8 + 365.8) * (204.5 - 204.5) + (365.8 + 365.8) * (204.5 - 200.5) + (365.8 + 487.5) * (200.5 - 200.5) + (487.5 + 487.5) * (200.5 - 455.9) + (487.5 + 179.5) * (455.9 - 455.9) + (179.5 + 179.5) * (455.9 - 407) + (179.5 + 198.8) * (407 - 407) + (198.8 + 198.8) * (407 - 167.2) + (198.8 + 265.6) * (167.2 - 167.2)\right) * 0.5 * 0.00694$
BASEMENT (Non-living area)	340	$-\left((198.8 + 198.8) * (167.2 - 407) + (198.8 + 179.5) * (407 - 407) + (179.5 + 179.5) * (407 - 455.9) + (179.5 + 25.7) * (455.9 - 455.9) + (25.7 + 25.7) * (455.9 - 167.2) + (25.7 + 198.8) * (167.2 - 167.2)\right) * 0.5 * 0.00694$
HALF BATH (Non-living area)	30	$-\left((365.8 + 365.8) * (167.2 - 204.5) + (365.8 + 361.8) * (204.5 - 204.5) + (361.8 + 361.8) * (204.5 - 210) + (361.8 + 265.6) * (210 - 210) + (265.6 + 265.6) * (210 - 167.2) + (265.6 + 365.8) * (167.2 - 167.2)\right) * 0.5 * 0.00694$
UTILITY (Non-living area)	28	$-\left((487.5 + 487.5) * (167.2 - 200.5) + (487.5 + 365.8) * (200.5 - 200.5) + (365.8 + 365.8) * (200.5 - 167.2) + (365.8 + 487.5) * (167.2 - 167.2)\right) * 0.5 * 0.00694$

# 3497 Blue Creek Rd, Lenoir, NC, US

Gross Living Area: 2085 sq. ft

## Level 2

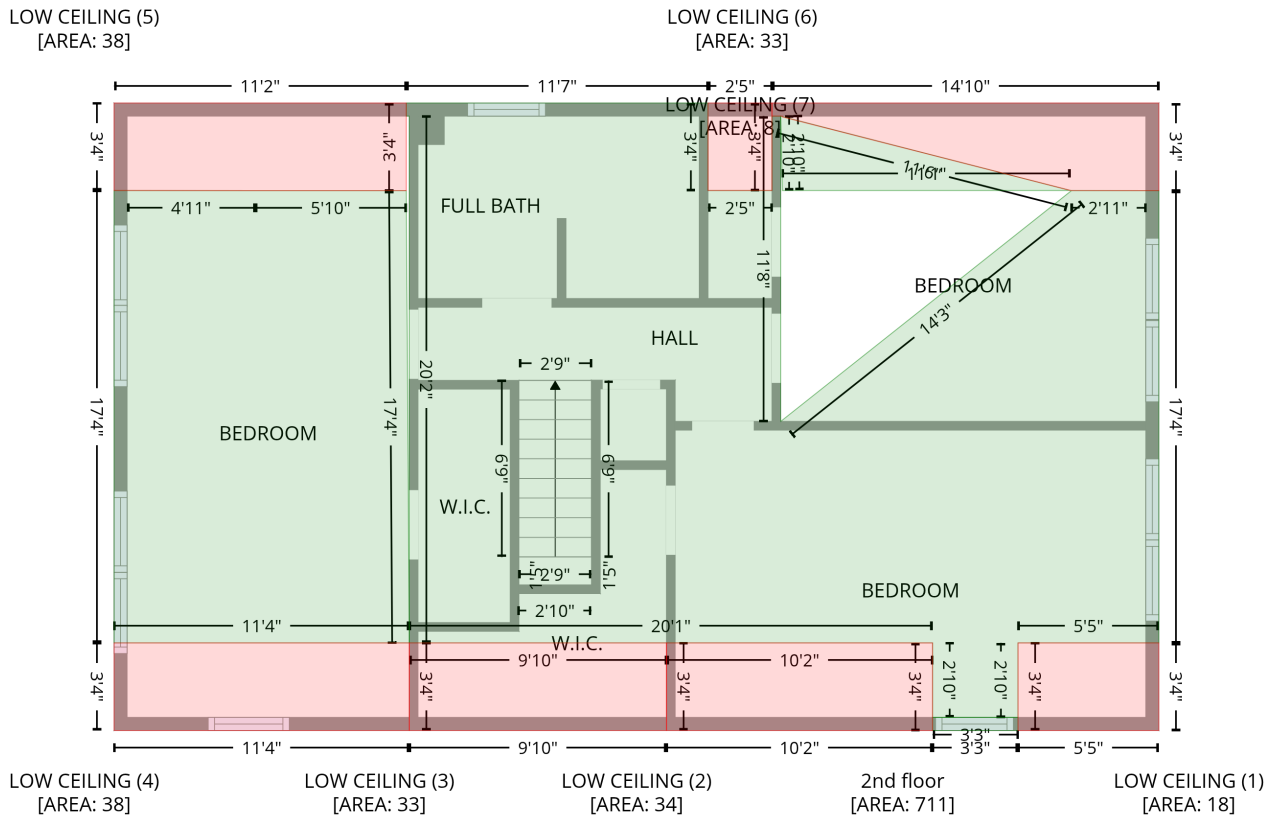


Space	Area (sq. ft)	Calculation
1st floor (Living area)	1374	Coordinate Polygon Area Algorithm using inches $-((497.2 + 497.2) * (1.9 - 344.9) + (497.2 + 497.2) * (344.9 - 344.9) + (497.2 + 497.2) * (344.9 - 455.9) + (497.2 + 16.4) * (455.9 - 455.9) + (16.4 + 16.4) * (455.9 - 167.2) + (16.4 + 153.1) * (167.2 - 167.2) + (153.1 + 153.1) * (167.2 - 100) + (153.1 + 130.6) * (100 - 100) + (130.6 + 130.6) * (100 - 1.9) + (130.6 + 497.2) * (1.9 - 1.9)) * 0.5 * 0.00694$
FIREPLACE (Non-living area)	12	$-((515.5 + 515.5) * (255.8 - 350.9) + (515.5 + 497.2) * (350.9 - 350.9) + (497.2 + 497.2) * (350.9 - 344.9) + (497.2 + 509.5) * (344.9 - 344.9) + (509.5 + 497.2) * (344.9 - 344.9) + (497.2 + 497.2) * (344.9 - 255.8) + (497.2 + 515.5) * (255.8 - 255.8)) * 0.5 * 0.00694$

# 3497 Blue Creek Rd, Lenoir, NC, US

Gross Living Area: 2085 sq. ft

## Level 3



Space	Area (sq. ft)	Calculation
2nd floor (Living area)	711	Coordinate Polygon Area Algorithm using inches $-((432.4 + 432.4) * (449.9 - 455.9) + (432.4 + 393.1) * (455.9 - 455.9) + (393.1 + 393.1) * (455.9 - 449.9) + (393.1 + 432.4) * (449.9 - 449.9)) * 0.5 * 0.00694 + -((289.8 + 289.8) * (167.2 - 207.5) + (289.8 + 319.2) * (207.5 - 207.5) + (319.2 + 319.2) * (207.5 - 173.2) + (319.2 + 323.2) * (173.2 - 173.2) + (323.2 + 323.2) * (173.2 - 313.7) + (323.2 + 457) * (313.7 - 207.6) + (457 + 456.6) * (207.6 - 207.5) + (456.6 + 491.2) * (207.5 - 207.6) + (491.2 + 497.2) * (207.6 - 207.6) + (497.2 + 497.2) * (207.6 - 415.6) + (497.2 + 432.4) * (415.6 - 415.6) + (432.4 + 432.4) * (415.6 - 449.8) + (432.4 + 393.1) * (449.8 - 449.9) + (393.1 + 393.1) * (449.9 - 415.6) + (393.1 + 152.3) * (415.6 - 415.6) + (152.3 + 152.3) * (415.6 - 173.2) + (152.3 + 150.9) * (173.2 - 173.2) + (150.9 + 150.9) * (173.2 - 167.2) + (150.9 + 289.8) * (167.2 - 167.2)) * 0.5 * 0.00694 + -((22.4 + 81.2) * (207.5 - 207.6) + (81.2 + 150.9) * (207.6 - 207.6) + (150.9 + 152.3) * (207.6 - 415.6) + (152.3 + 16.4) * (415.6 - 415.6) + (16.4 + 16.4) * (415.6 - 207.5) + (16.4 + 22.4) * (207.5 - 207.5)) * 0.5 * 0.00694 + -((323.2 + 456.6) * (173.2 - 207.5) + (456.6 + 324) * (207.5 - 207.5) + (324 + 323.2) * (207.5 - 173.2)) * 0.5 * 0.00694$
LOW CEILING (Non-living area)	18	$-((497.2 + 497.2) * (415.6 - 455.9) + (497.2 + 432.4) * (455.9 - 455.9) + (432.4 + 432.4) * (455.9 - 415.6) + (432.4 + 497.2) * (415.6 - 415.6)) * 0.5 * 0.00694$
LOW CEILING (Non-living area)	34	$-((393.1 + 393.1) * (415.6 - 455.9) + (393.1 + 270.7) * (455.9 - 455.9) + (270.7 + 270.7) * (455.9 - 415.6) + (270.7 + 393.1) * (415.6 - 415.6)) * 0.5 * 0.00694$
LOW CEILING (Non-living area)	33	$-((270.7 + 270.7) * (415.6 - 455.9) + (270.7 + 152.3) * (455.9 - 455.9) + (152.3 + 152.3) * (455.9 - 415.6) + (152.3 + 270.7) * (415.6 - 415.6)) * 0.5 * 0.00694$
LOW CEILING (Non-living area)	38	$-((152.3 + 152.3) * (415.6 - 455.9) + (152.3 + 16.4) * (455.9 - 455.9) + (16.4 + 16.4) * (455.9 - 415.6) + (16.4 + 152.3) * (415.6 - 415.6)) * 0.5 * 0.00694$

# 3497 Blue Creek Rd, Lenoir, NC, US

Gross Living Area: 2085 sq. ft

## Level 3

Space	Area (sq. ft)	Calculation <small>Coordinate Polygon Area Algorithm using inches</small>
LOW CEILING (Non-living area)	38	$-((150.9 + 150.9) * (167.2 - 207.6) + (150.9 + 81.2) * (207.6 - 207.6) + (81.2 + 22.4) * (207.6 - 207.5) + (22.4 + 16.4) * (207.5 - 207.5) + (16.4 + 16.4) * (207.5 - 167.2) + (16.4 + 150.9) * (167.2 - 167.2)) * 0.5 * 0.00694$
LOW CEILING (Non-living area)	33	$-((497.2 + 497.2) * (167.2 - 207.6) + (497.2 + 491.2) * (207.6 - 207.6) + (491.2 + 456.6) * (207.6 - 207.5) + (456.6 + 324) * (207.5 - 173.6) + (324 + 324) * (173.6 - 173.2) + (324 + 319.2) * (173.2 - 173.2) + (319.2 + 319.2) * (173.2 - 167.2) + (319.2 + 497.2) * (167.2 - 167.2)) * 0.5 * 0.00694$
LOW CEILING (Non-living area)	8	$-((319.2 + 319.2) * (167.2 - 207.5) + (319.2 + 289.8) * (207.5 - 207.5) + (289.8 + 289.8) * (207.5 - 167.2) + (289.8 + 319.2) * (167.2 - 167.2)) * 0.5 * 0.00694$