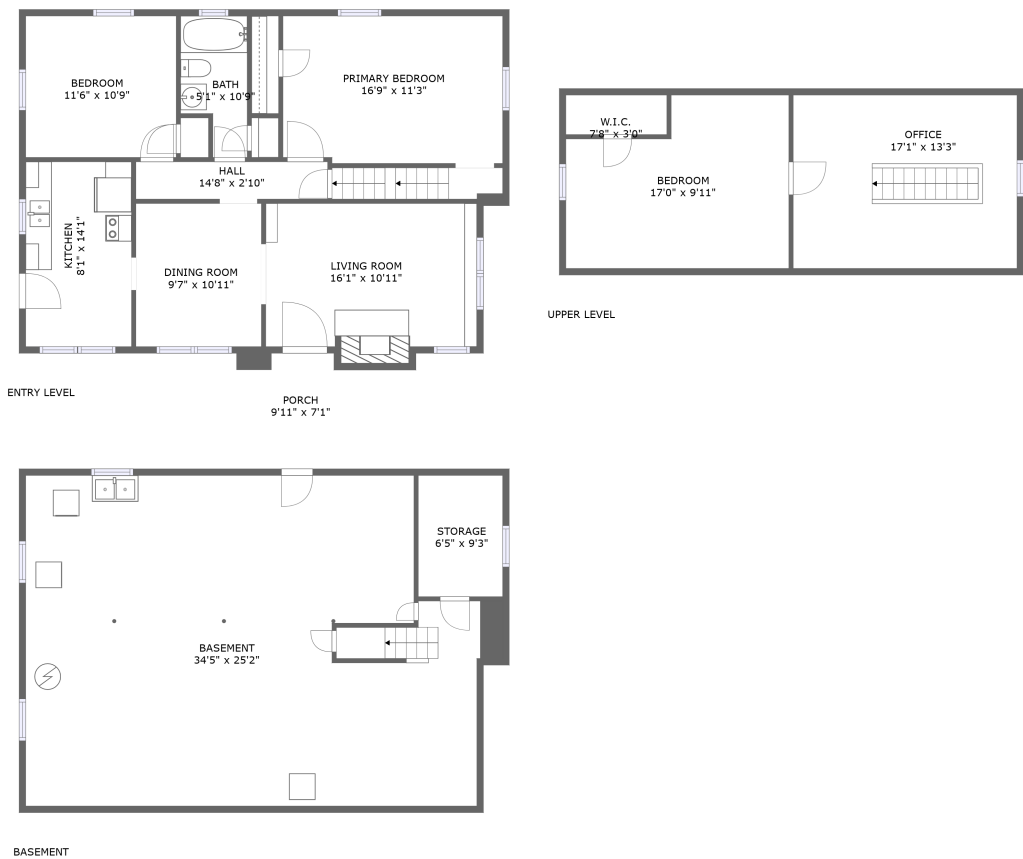


Home report

2603 Chatham Street Northwest, Williamson Road, Roanoke,
Roanoke city, Virginia, United States, 24012



Total Area: 1240 sq. ft

Floor 1: 0 sq. ft, Floor 2: 899 sq. ft, Floor 3: 341 sq. ft

Excluded: Basement 836 sq. ft, Storage 60 sq. ft, Porch 67 sq. ft, Fireplace 8 sq. ft, Low ceiling 113 sq. ft, Walls: 171 sq. ft

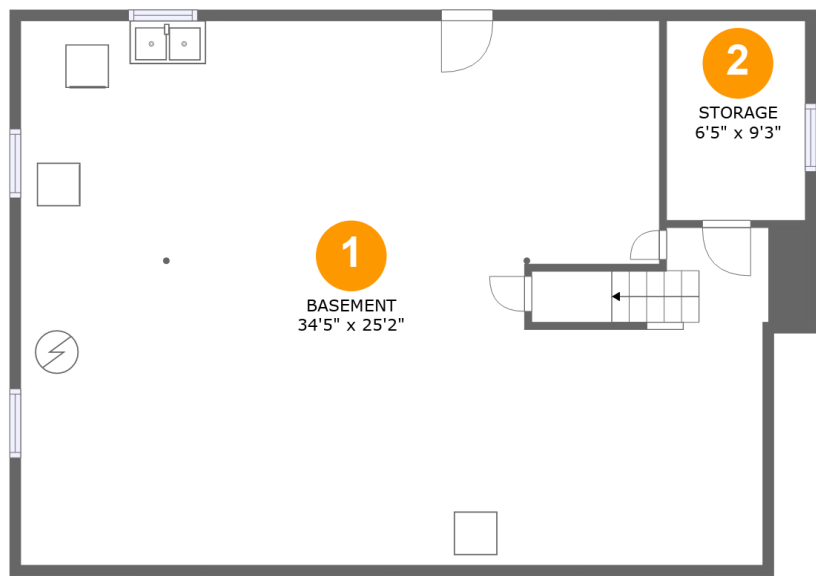
Property summary

 **3** Floors

 **3** Bedrooms

 **1** Bathrooms

2603 Chatham Street Northwest, Williamson Road, Roanoke,
Roanoke city, Virginia, United States, 24012



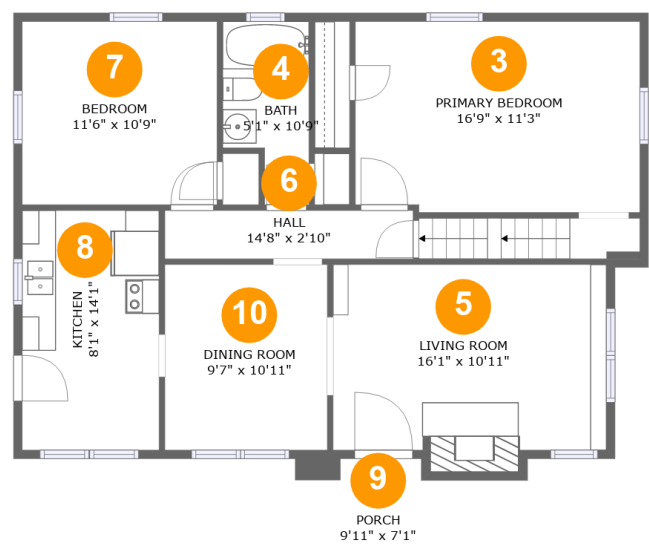
Room dimensions

Floor 1 Total:0sqft Excluded: 896sqft

#		Max Dimensions	sqft	Included
1	Basement	34'5" x 25'2"	825 sq. ft	No
2	Storage	6'5" x 9'3"	60 sq. ft	No

Home report

2603 Chatham Street Northwest, Williamson Road, Roanoke,
Roanoke city, Virginia, United States, 24012



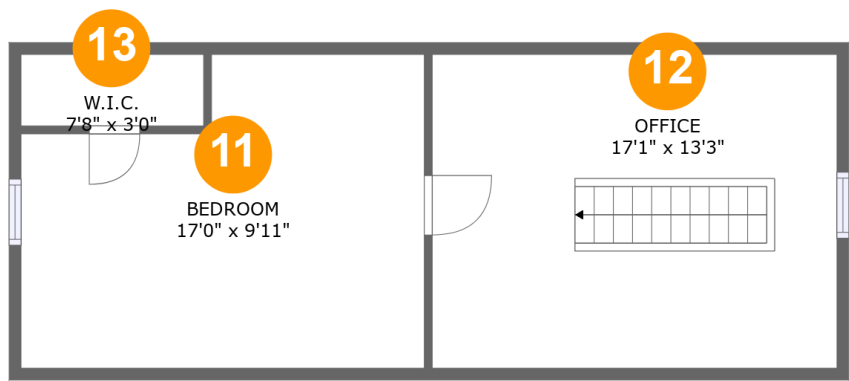
Room dimensions

Floor 2 Total:899sqft Excluded: 75sqft

#		Max Dimensions	sqft	Included
3	Primary Bedroom	16'9" x 11'3"	187 sq. ft	Yes
4	Bath	5'1" x 10'9"	47 sq. ft	Yes
5	Living Room	16'1" x 10'11"	183 sq. ft	Yes
6	Hall	14'8" x 2'10"	42 sq. ft	Yes
7	Bedroom	11'6" x 10'9"	124 sq. ft	Yes
8	Kitchen	8'1" x 14'1"	114 sq. ft	Yes
9	Porch	9'11" x 7'1"	67 sq. ft	No
10	Dining Room	9'7" x 10'11"	105 sq. ft	Yes

Home report

2603 Chatham Street Northwest, Williamson Road, Roanoke,
Roanoke city, Virginia, United States, 24012



Room dimensions

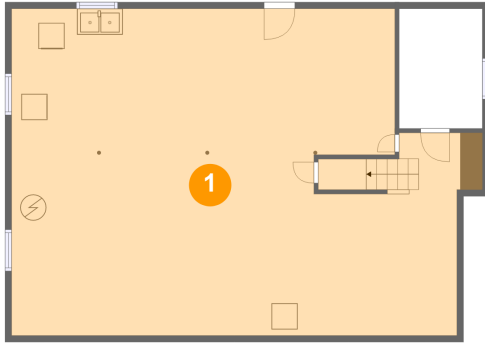
Floor 3 Total:341sqft Excluded: 113sqft

#		Max Dimensions	sqft	Included
11	Bedroom	17'0" x 9'11"	153 sq. ft	Yes
12	Office	17'1" x 13'3"	168 sq. ft	Yes
13	W.I.C.	7'8" x 3'0"	12 sq. ft	Yes

Home report

2603 Chatham Street Northwest, Williamson Road, Roanoke,
Roanoke city, Virginia, United States, 24012

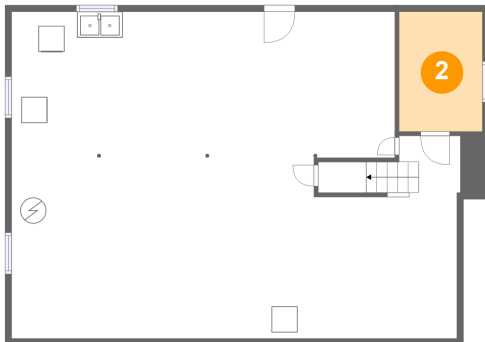
1 Floor 1 - Basement



Max Dimensions: 34'5" x 25'2"
Calculated Area: 825 sq. ft
Included: No

Heated: Yes
Finished: No
Enclosed: Yes
Contiguous: Yes
Permitted: Yes
Wet space: No
Addition: No
Conversion: No

2 Floor 1 - Storage



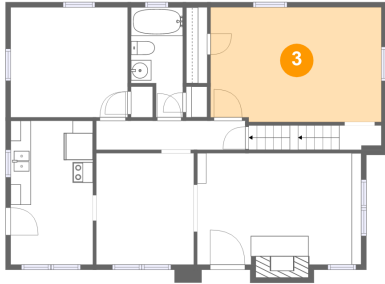
Max Dimensions: 6'5" x 9'3"
Calculated Area: 60 sq. ft
Included: No

Heated: No
Finished: No
Enclosed: No
Contiguous: Yes
Permitted: Yes
Wet space: No
Addition: No
Conversion: No

Home report

2603 Chatham Street Northwest, Williamson Road, Roanoke,
Roanoke city, Virginia, United States, 24012

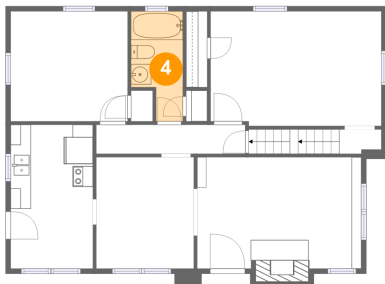
3 Floor 2 - Primary Bedroom



Max Dimensions: 16'9" x 11'3"
Calculated Area: 187 sq. ft
Included: Yes

Heated: Yes
Finished: Yes
Enclosed: Yes
Contiguous: Yes
Permitted: Yes
Wet space: No
Addition: No
Conversion: No

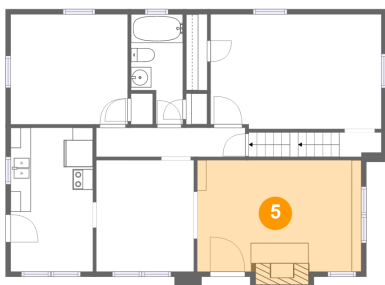
4 Floor 2 - Bath



Max Dimensions: 5'1" x 10'9"
Calculated Area: 47 sq. ft
Included: Yes

Heated: Yes
Finished: Yes
Enclosed: Yes
Contiguous: Yes
Permitted: Yes
Wet space: Yes
Addition: No
Conversion: No

5 Floor 2 - Living Room

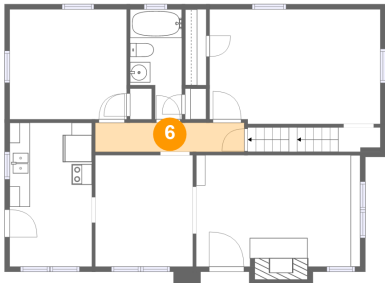


Max Dimensions: 16'1" x 10'11"
Calculated Area: 183 sq. ft
Included: Yes

Heated: Yes
Finished: Yes
Enclosed: Yes
Contiguous: Yes
Permitted: Yes
Wet space: No
Addition: No
Conversion: No

2603 Chatham Street Northwest, Williamson Road, Roanoke,
Roanoke city, Virginia, United States, 24012

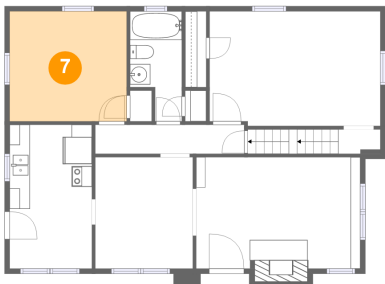
6 Floor 2 - Hall



Max Dimensions: 14'8" x 2'10"
Calculated Area: 42 sq. ft
Included: Yes

Heated: Yes
Finished: Yes
Enclosed: Yes
Contiguous: Yes
Permitted: Yes
Wet space: No
Addition: No
Conversion: No

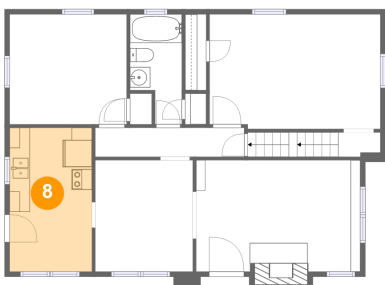
7 Floor 2 - Bedroom



Max Dimensions: 11'6" x 10'9"
Calculated Area: 124 sq. ft
Included: Yes

Heated: Yes
Finished: Yes
Enclosed: Yes
Contiguous: Yes
Permitted: Yes
Wet space: No
Addition: No
Conversion: No

8 Floor 2 - Kitchen

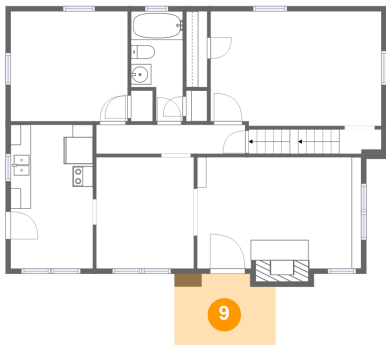


Max Dimensions: 8'1" x 14'1"
Calculated Area: 114 sq. ft
Included: Yes

Heated: Yes
Finished: Yes
Enclosed: Yes
Contiguous: Yes
Permitted: Yes
Wet space: No
Addition: No
Conversion: No

2603 Chatham Street Northwest, Williamson Road, Roanoke,
Roanoke city, Virginia, United States, 24012

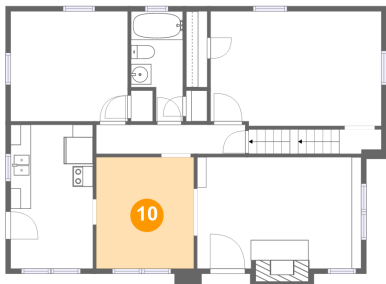
9 Floor 2 - Porch



Max Dimensions: 9'11" x 7'1"
Calculated Area: 67 sq. ft
Included: No

Heated: No
Finished: Yes
Enclosed: No
Contiguous: Yes
Permitted: Yes
Wet space: No
Addition: No
Conversion: No

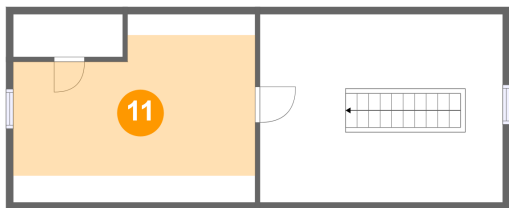
10 Floor 2 - Dining Room



Max Dimensions: 9'7" x 10'11"
Calculated Area: 105 sq. ft
Included: Yes

Heated: Yes
Finished: Yes
Enclosed: Yes
Contiguous: Yes
Permitted: Yes
Wet space: No
Addition: No
Conversion: No

11 Floor 3 - Bedroom

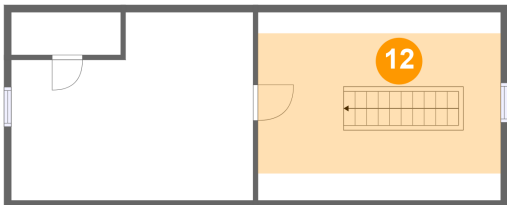


Max Dimensions: 17'0" x 9'11"
Calculated Area: 153 sq. ft
Included: Yes

Heated: Yes
Finished: Yes
Enclosed: Yes
Contiguous: Yes
Permitted: Yes
Wet space: No
Addition: No
Conversion: No

2603 Chatham Street Northwest, Williamson Road, Roanoke,
Roanoke city, Virginia, United States, 24012

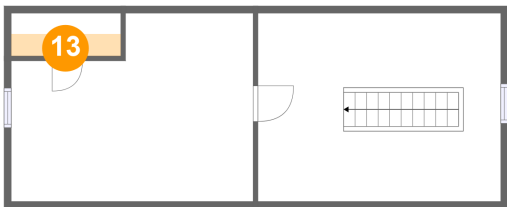
12 Floor 3 - Office



Max Dimensions: 17'1" x 13'3"
Calculated Area: 168 sq. ft
Included: Yes

Heated: Yes
Finished: Yes
Enclosed: Yes
Contiguous: Yes
Permitted: Yes
Wet space: No
Addition: No
Conversion: No

13 Floor 3 - W.I.C.



Max Dimensions: 7'8" x 3'0"
Calculated Area: 12 sq. ft
Included: Yes

Heated: Yes
Finished: Yes
Enclosed: Yes
Contiguous: Yes
Permitted: Yes
Wet space: No
Addition: No
Conversion: No