



Total Area: 3163 sq. ft

1st Floor: 1112 sq. ft, 2nd Floor: 1607 sq. ft, 3rd Floor: 444 sq. ft

Excluded: Garage 446 sq. ft, Fireplace 12 sq. ft, Walls: 234 sq. ft

Property summary

 **3** Floors

 **6** Bedrooms

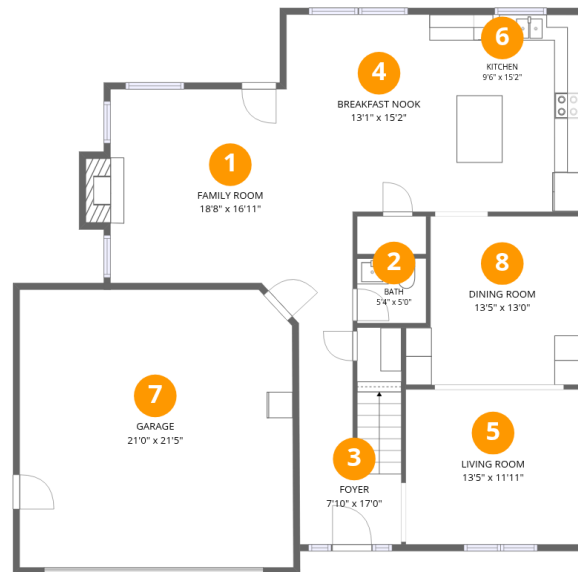
 **2** Bathrooms

Home data report

568 Waters Rd, Chesapeake, VA, US

 **1**
Half baths

 **1**
Garages



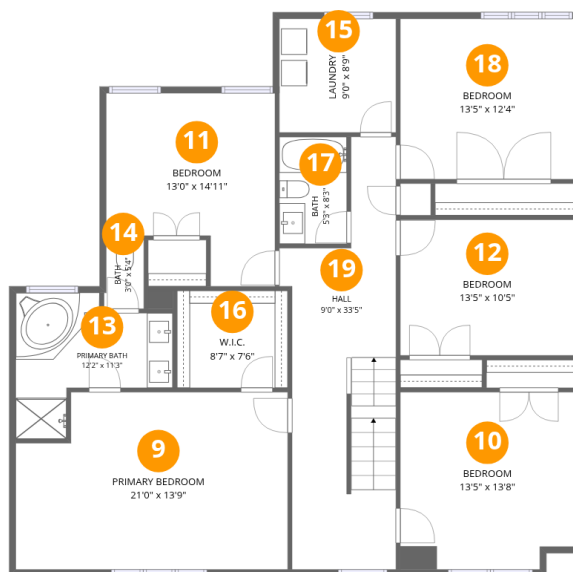
Room dimensions

Floor 1

Total: 1112 sqft

Excluded: 458 sqft

#		Dimensions	sqft	Counted as living area
1	Family Room	18'8" x 16'11"	281 sq. ft	Yes
2	Bath	5'4" x 5'0"	26 sq. ft	Yes
3	Foyer	7'10" x 17'0"	113 sq. ft	Yes
4	Breakfast Nook	13'1" x 15'2"	175 sq. ft	Yes
5	Living Room	13'5" x 11'11"	160 sq. ft	Yes
6	Kitchen	9'6" x 15'2"	144 sq. ft	Yes
7	Garage	21'0" x 21'5"	446 sq. ft	No
8	Dining Room	13'5" x 13'0"	158 sq. ft	Yes

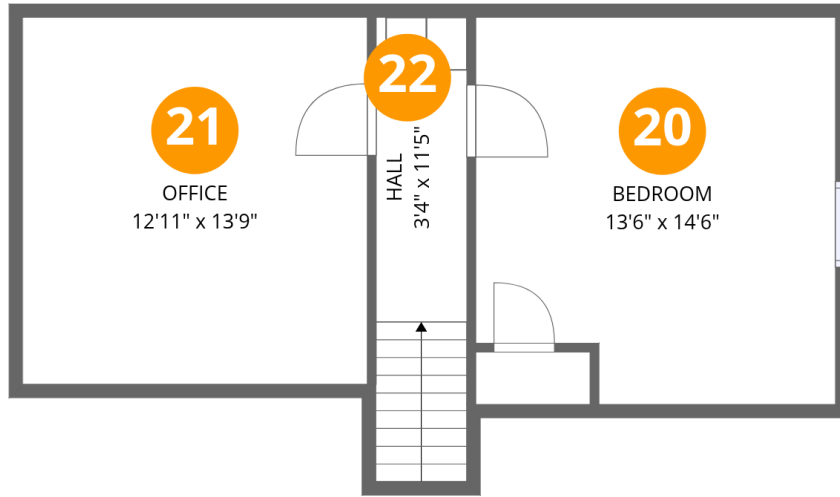


Room dimensions

Floor 2

Total: 1607 sqft Excluded: 0 sqft

#		Dimensions	sqft	Counted as living area
9	Primary Bedroom	21'0" x 13'9"	271 sq. ft	Yes
10	Bedroom	13'5" x 13'8"	180 sq. ft	Yes
11	Bedroom	13'0" x 14'11"	163 sq. ft	Yes
12	Bedroom	13'5" x 10'5"	141 sq. ft	Yes
13	Primary Bath	12'2" x 11'3"	96 sq. ft	Yes
14	Bath	3'0" x 5'4"	16 sq. ft	Yes
15	Laundry	9'0" x 8'9"	79 sq. ft	Yes
16	W.I.C.	8'7" x 7'6"	64 sq. ft	Yes
17	Bath	5'3" x 8'3"	43 sq. ft	Yes
18	Bedroom	13'5" x 12'4"	167 sq. ft	Yes
19	Hall	9'0" x 33'5"	232 sq. ft	Yes



Room dimensions

Floor 3

Total:444sqft Excluded: 0sqft

#		Dimensions	sqft	Counted as living area
20	Bedroom	13'6" x 14'6"	186 sq. ft	Yes
21	Office	12'11" x 13'9"	178 sq. ft	Yes
22	Hall	3'4" x 11'5"	59 sq. ft	Yes

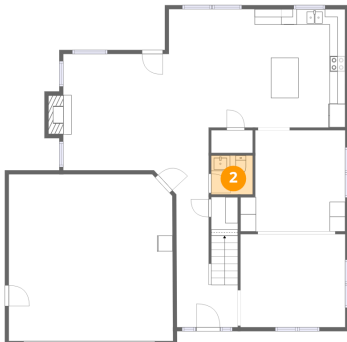
1 Floor 1 - Family Room



Dimensions: 18'8" x 16'11"
Area: 281 sq. ft
Counted as living area: Yes

Heated: Yes
Finished: Yes
Enclosed: Yes
Contiguous: Yes
Permitted: Yes
Wet space: No
Addition: No
Conversion: No

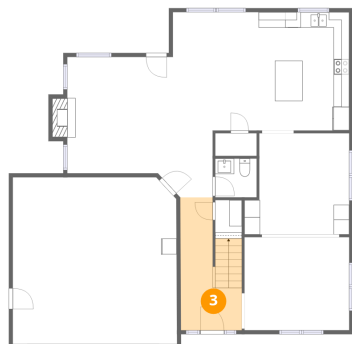
2 Floor 1 - Bath



Dimensions: 5'4" x 5'0"
Area: 26 sq. ft
Counted as living area: Yes

Heated: Yes
Finished: Yes
Enclosed: Yes
Contiguous: Yes
Permitted: Yes
Wet space: Yes
Addition: No
Conversion: No

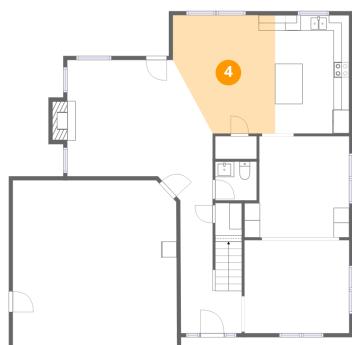
3 Floor 1 - Foyer



Dimensions: 7'10" x 17'0"
Area: 113 sq. ft
Counted as living area: Yes

Heated: Yes
Finished: Yes
Enclosed: Yes
Contiguous: Yes
Permitted: Yes
Wet space: No
Addition: No
Conversion: No

4 Floor 1 - Breakfast Nook



Dimensions: 13'1" x 15'2"
Area: 175 sq. ft
Counted as living area: Yes

Heated: Yes
Finished: Yes
Enclosed: Yes
Contiguous: Yes
Permitted: Yes
Wet space: No
Addition: No
Conversion: No

5 Floor 1 - Living Room



Dimensions: 13'5" x 11'11"
Area: 160 sq. ft
Counted as living area: Yes

Heated: Yes
Finished: Yes
Enclosed: Yes
Contiguous: Yes
Permitted: Yes
Wet space: No
Addition: No
Conversion: No

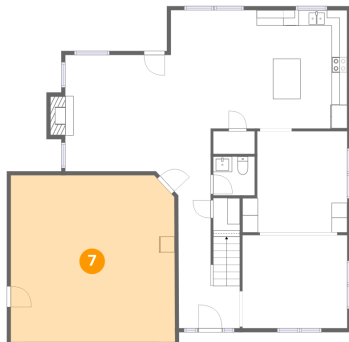
6 Floor 1 - Kitchen



Dimensions: 9'6" x 15'2"
Area: 144 sq. ft
Counted as living area: Yes

Heated: Yes
Finished: Yes
Enclosed: Yes
Contiguous: Yes
Permitted: Yes
Wet space: No
Addition: No
Conversion: No

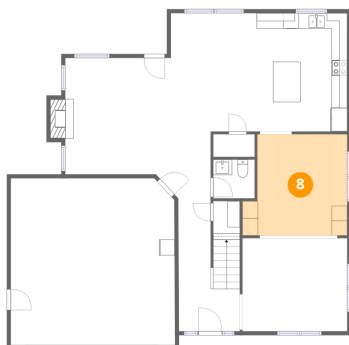
7 Floor 1 - Garage



Dimensions: 21'0" x 21'5"
Area: 446 sq. ft
Counted as living area: No

Heated: No
Finished: No
Enclosed: Yes
Contiguous: Yes
Permitted: Yes
Wet space: No
Addition: No
Conversion: No

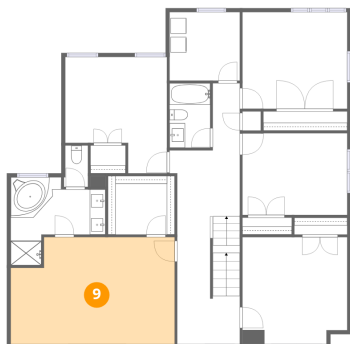
8 Floor 1 - Dining Room



Dimensions: 13'5" x 13'0"
Area: 158 sq. ft
Counted as living area: Yes

Heated: Yes
Finished: Yes
Enclosed: Yes
Contiguous: Yes
Permitted: Yes
Wet space: No
Addition: No
Conversion: No

9 Floor 2 - Primary Bedroom



Dimensions: 21'0" x 13'9"
Area: 271 sq. ft
Counted as living area: Yes

Heated: Yes
Finished: Yes
Enclosed: Yes
Contiguous: Yes
Permitted: Yes
Wet space: No
Addition: No
Conversion: No

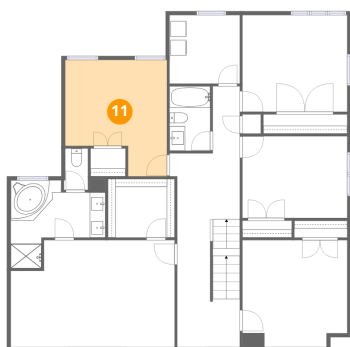
10 Floor 2 - Bedroom



Dimensions: 13'5" x 13'8"
Area: 180 sq. ft
Counted as living area: Yes

Heated: Yes
Finished: Yes
Enclosed: Yes
Contiguous: Yes
Permitted: Yes
Wet space: No
Addition: No
Conversion: No

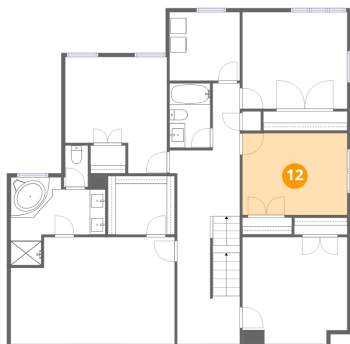
11 Floor 2 - Bedroom



Dimensions: 13'0" x 14'11"
Area: 163 sq. ft
Counted as living area: Yes

Heated: Yes
Finished: Yes
Enclosed: Yes
Contiguous: Yes
Permitted: Yes
Wet space: No
Addition: No
Conversion: No

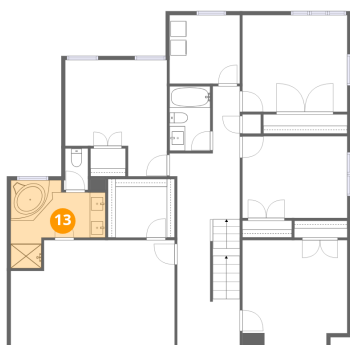
12 Floor 2 - Bedroom



Dimensions: 13'5" x 10'5"
Area: 141 sq. ft
Counted as living area: Yes

Heated: Yes
Finished: Yes
Enclosed: Yes
Contiguous: Yes
Permitted: Yes
Wet space: No
Addition: No
Conversion: No

13 Floor 2 - Primary Bath



Dimensions: 12'2" x 11'3"
Area: 96 sq. ft
Counted as living area: Yes

Heated: Yes
Finished: Yes
Enclosed: Yes
Contiguous: Yes
Permitted: Yes
Wet space: Yes
Addition: No
Conversion: No

14 Floor 2 - Bath



Dimensions: 3'0" x 5'4"
Area: 16 sq. ft
Counted as living area: Yes

Heated: Yes
Finished: Yes
Enclosed: Yes
Contiguous: Yes
Permitted: Yes
Wet space: Yes
Addition: No
Conversion: No

15 Floor 2 - Laundry



Dimensions: 9'0" x 8'9"
Area: 79 sq. ft
Counted as living area: Yes

Heated: Yes
Finished: Yes
Enclosed: Yes
Contiguous: Yes
Permitted: Yes
Wet space: No
Addition: No
Conversion: No

16 Floor 2 - W.I.C.



Dimensions: 8'7" x 7'6"
Area: 64 sq. ft
Counted as living area: Yes

Heated: Yes
Finished: Yes
Enclosed: Yes
Contiguous: Yes
Permitted: Yes
Wet space: No
Addition: No
Conversion: No

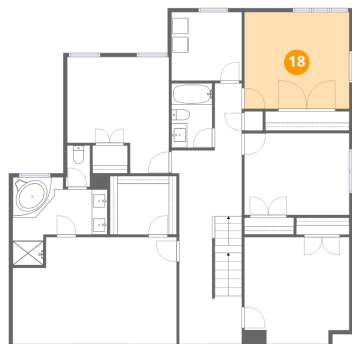
17 Floor 2 - Bath



Dimensions: 5'3" x 8'3"
Area: 43 sq. ft
Counted as living area: Yes

Heated: Yes
Finished: Yes
Enclosed: Yes
Contiguous: Yes
Permitted: Yes
Wet space: Yes
Addition: No
Conversion: No

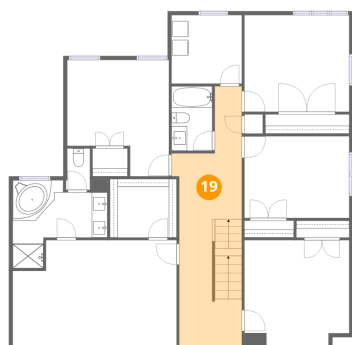
18 Floor 2 - Bedroom



Dimensions: 13'5" x 12'4"
Area: 167 sq. ft
Counted as living area: Yes

Heated: Yes
Finished: Yes
Enclosed: Yes
Contiguous: Yes
Permitted: Yes
Wet space: No
Addition: No
Conversion: No

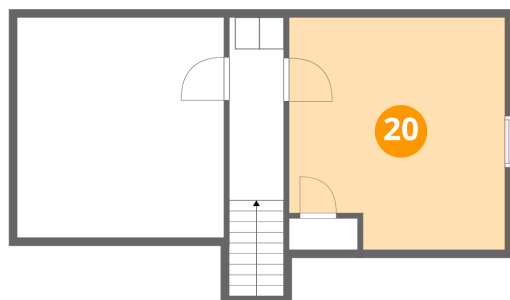
19 Floor 2 - Hall



Dimensions: 9'0" x 33'5"
Area: 232 sq. ft
Counted as living area: Yes

Heated: Yes
Finished: Yes
Enclosed: Yes
Contiguous: Yes
Permitted: Yes
Wet space: No
Addition: No
Conversion: No

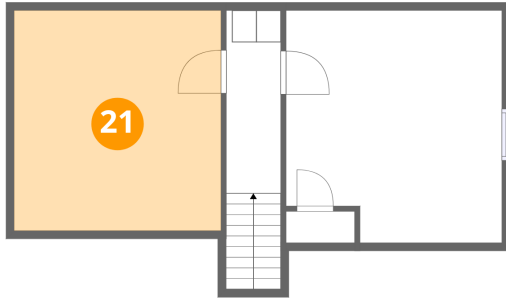
20 Floor 3 - Bedroom



Dimensions: 13'6" x 14'6"
Area: 186 sq. ft
Counted as living area: Yes

Heated: Yes
Finished: Yes
Enclosed: Yes
Contiguous: Yes
Permitted: Yes
Wet space: No
Addition: No
Conversion: No

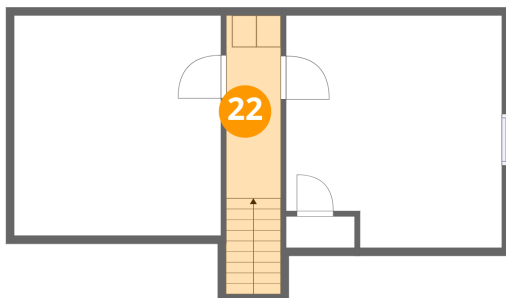
21 Floor 3 - Office



Dimensions: 12'11" x 13'9"
Area: 178 sq. ft
Counted as living area: Yes

Heated: Yes
Finished: Yes
Enclosed: Yes
Contiguous: Yes
Permitted: Yes
Wet space: No
Addition: No
Conversion: No

22 Floor 3 - Hall



Dimensions: 3'4" x 11'5"
Area: 59 sq. ft
Counted as living area: Yes

Heated: Yes
Finished: Yes
Enclosed: Yes
Contiguous: Yes
Permitted: Yes
Wet space: No
Addition: No
Conversion: No