

Home data report

1623 Roemer Blvd, Farrell, PA, US



Total Area: 1225 sq. ft

Basement 1: 0 sq. ft, 1st Floor: 907 sq. ft, 2nd Floor: 318 sq. ft

Excluded: Basement 621 sq. ft, Storage 181 sq. ft, Garage 309 sq. ft, Screened porch 193 sq. ft, Porch 56 sq. ft, Deck 130 sq. ft, Low ceiling 52 sq. ft, Walls: 238 sq. ft

Property summary

3 Floors

2 Bedrooms

1 Bathrooms

1 Garages



Room dimensions

Floor 1 Below grade

Total: 0sqft

Excluded: 1111sqft

#		Dimensions	sqft	Counted as living area
1	Swimming Pool	25'3" x 24'6"	617 sq. ft	No
2	Garage	17'8" x 17'5"	308 sq. ft	No
3	Storage	5'3" x 5'9"	30 sq. ft	No
4	Storage	15'4" x 9'8"	149 sq. ft	No
5	Basement	20'11" x 29'4"	614 sq. ft	No



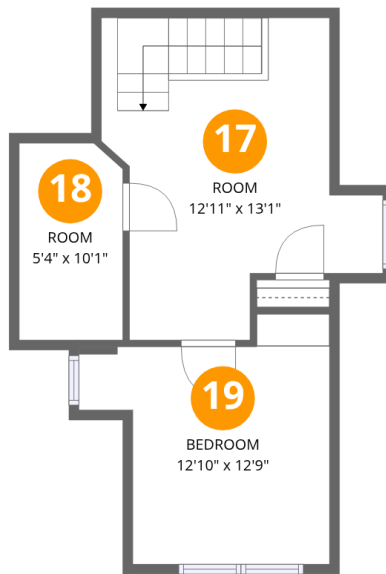
Room dimensions

Floor 2

Total:907sqft

Excluded: 379sqft

#		Dimensions	sqft	Counted as living area
6	Porch	7'3" x 7'9"	56 sq. ft	No
7	Primary Bedroom	9'3" x 22'3"	205 sq. ft	Yes
8	Screened Porch	13'10" x 14'0"	193 sq. ft	No
9	Foyer	8'0" x 7'1"	57 sq. ft	Yes
10	Kitchen	12'0" x 9'8"	116 sq. ft	Yes
11	Hall	7'0" x 6'9"	47 sq. ft	Yes
12	Dining Area	11'5" x 7'5"	84 sq. ft	Yes
13	Sun Room	11'4" x 7'9"	88 sq. ft	Yes
14	Bath	8'8" x 5'9"	50 sq. ft	Yes
15	Living Room	13'7" x 14'9"	201 sq. ft	Yes
16	Deck	11'4" x 11'5"	130 sq. ft	No



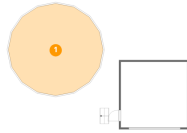
Room dimensions

Floor 3

Total:318sqft Excluded: 52sqft

#		Dimensions	sqft	Counted as living area
17	Room	12'11" x 13'1"	169 sq. ft	Yes
18	Room	5'4" x 10'1"	53 sq. ft	No
19	Bedroom	12'10" x 12'9"	164 sq. ft	Yes

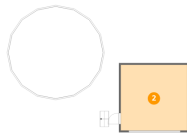
1 Floor 1 - Swimming Pool



Dimensions: 25'3" x 24'6"
Area: 617 sq. ft
Counted as living area: No

Heated: No
Finished: No
Enclosed: No
Contiguous: No
Permitted: No
Wet space: No
Addition: No
Conversion: No

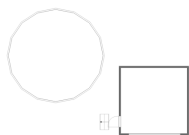
2 Floor 1 - Garage



Dimensions: 17'8" x 17'5"
Area: 308 sq. ft
Counted as living area: No

Heated: No
Finished: No
Enclosed: Yes
Contiguous: Yes
Permitted: Yes
Wet space: No
Addition: No
Conversion: No

3 Floor 1 - Storage

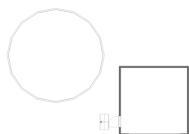


Dimensions: 5'3" x 5'9"
Area: 30 sq. ft
Counted as living area: No

Heated: No
Finished: No
Enclosed: No
Contiguous: Yes
Permitted: Yes
Wet space: No
Addition: No
Conversion: No



4 Floor 1 - Storage

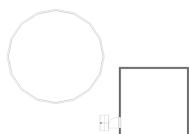


Dimensions: 15'4" x 9'8"
Area: 149 sq. ft
Counted as living area: No

Heated: No
Finished: No
Enclosed: No
Contiguous: Yes
Permitted: Yes
Wet space: No
Addition: No
Conversion: No



5 Floor 1 - Basement



Dimensions: 20'11" x 29'4"
Area: 614 sq. ft
Counted as living area: No

Heated: Yes
Finished: No
Enclosed: Yes
Contiguous: Yes
Permitted: Yes
Wet space: No
Addition: No
Conversion: No



6 Floor 2 - Porch



Dimensions: 7'3" x 7'9"
Area: 56 sq. ft
Counted as living area: No

Heated: No
Finished: No
Enclosed: No
Contiguous: Yes
Permitted: Yes
Wet space: No
Addition: No
Conversion: No

7 Floor 2 - Primary Bedroom



Dimensions: 9'3" x 22'3"
Area: 205 sq. ft
Counted as living area: Yes

Heated: Yes
Finished: Yes
Enclosed: Yes
Contiguous: Yes
Permitted: Yes
Wet space: No
Addition: No
Conversion: No

8 Floor 2 - Screened Porch



Dimensions: 13'10" x 14'0"
Area: 193 sq. ft
Counted as living area: No

Heated: No
Finished: No
Enclosed: No
Contiguous: Yes
Permitted: Yes
Wet space: No
Addition: No
Conversion: No

9 Floor 2 - Foyer



Dimensions: 8'0" x 7'1"
Area: 57 sq. ft
Counted as living area: Yes

Heated: Yes
Finished: Yes
Enclosed: Yes
Contiguous: Yes
Permitted: Yes
Wet space: No
Addition: No
Conversion: No

10 Floor 2 - Kitchen



Dimensions: 12'0" x 9'8"
Area: 116 sq. ft
Counted as living area: Yes

Heated: Yes
Finished: Yes
Enclosed: Yes
Contiguous: Yes
Permitted: Yes
Wet space: No
Addition: No
Conversion: No

11 Floor 2 - Hall



Dimensions: 7'0" x 6'9"
Area: 47 sq. ft
Counted as living area: Yes

Heated: Yes
Finished: Yes
Enclosed: Yes
Contiguous: Yes
Permitted: Yes
Wet space: No
Addition: No
Conversion: No

12 Floor 2 - Dining Area



Dimensions: 11'5" x 7'5"
Area: 84 sq. ft
Counted as living area: Yes

Heated: Yes
Finished: Yes
Enclosed: Yes
Contiguous: Yes
Permitted: Yes
Wet space: No
Addition: No
Conversion: No

13 Floor 2 - Sun Room



Dimensions: 11'4" x 7'9"
Area: 88 sq. ft
Counted as living area: Yes

Heated: Yes
Finished: Yes
Enclosed: Yes
Contiguous: Yes
Permitted: Yes
Wet space: No
Addition: No
Conversion: No

14 Floor 2 - Bath



Dimensions: 8'8" x 5'9"
Area: 50 sq. ft
Counted as living area: Yes

Heated: Yes
Finished: Yes
Enclosed: Yes
Contiguous: Yes
Permitted: Yes
Wet space: Yes
Addition: No
Conversion: No

15 Floor 2 - Living Room



Dimensions: 13'7" x 14'9"
Area: 201 sq. ft
Counted as living area: Yes

Heated: Yes
Finished: Yes
Enclosed: Yes
Contiguous: Yes
Permitted: Yes
Wet space: No
Addition: No
Conversion: No

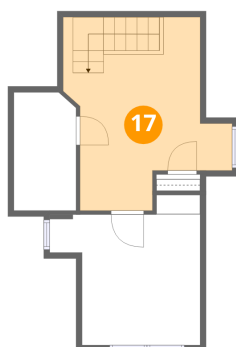
16 Floor 2 - Deck



Dimensions: 11'4" x 11'5"
Area: 130 sq. ft
Counted as living area: No

Heated: No
Finished: No
Enclosed: No
Contiguous: Yes
Permitted: Yes
Wet space: No
Addition: No
Conversion: No

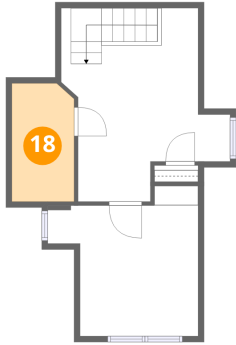
17 Floor 3 - Room



Dimensions: 12'11" x 13'1"
Area: 169 sq. ft
Counted as living area: Yes

Heated: Yes
Finished: Yes
Enclosed: Yes
Contiguous: Yes
Permitted: Yes
Wet space: No
Addition: No
Conversion: No

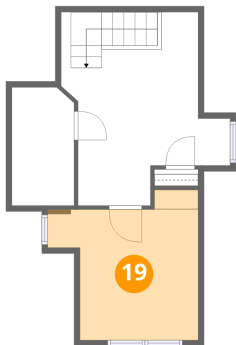
18 Floor 3 - Room



Dimensions: 5'4" x 10'1"
Area: 53 sq. ft
Counted as living area: No

Heated: Yes
Finished: Yes
Enclosed: Yes
Contiguous: Yes
Permitted: Yes
Wet space: No
Addition: No
Conversion: No

19 Floor 3 - Bedroom



Dimensions: 12'10" x 12'9"
Area: 164 sq. ft
Counted as living area: Yes

Heated: Yes
Finished: Yes
Enclosed: Yes
Contiguous: Yes
Permitted: Yes
Wet space: No
Addition: No
Conversion: No