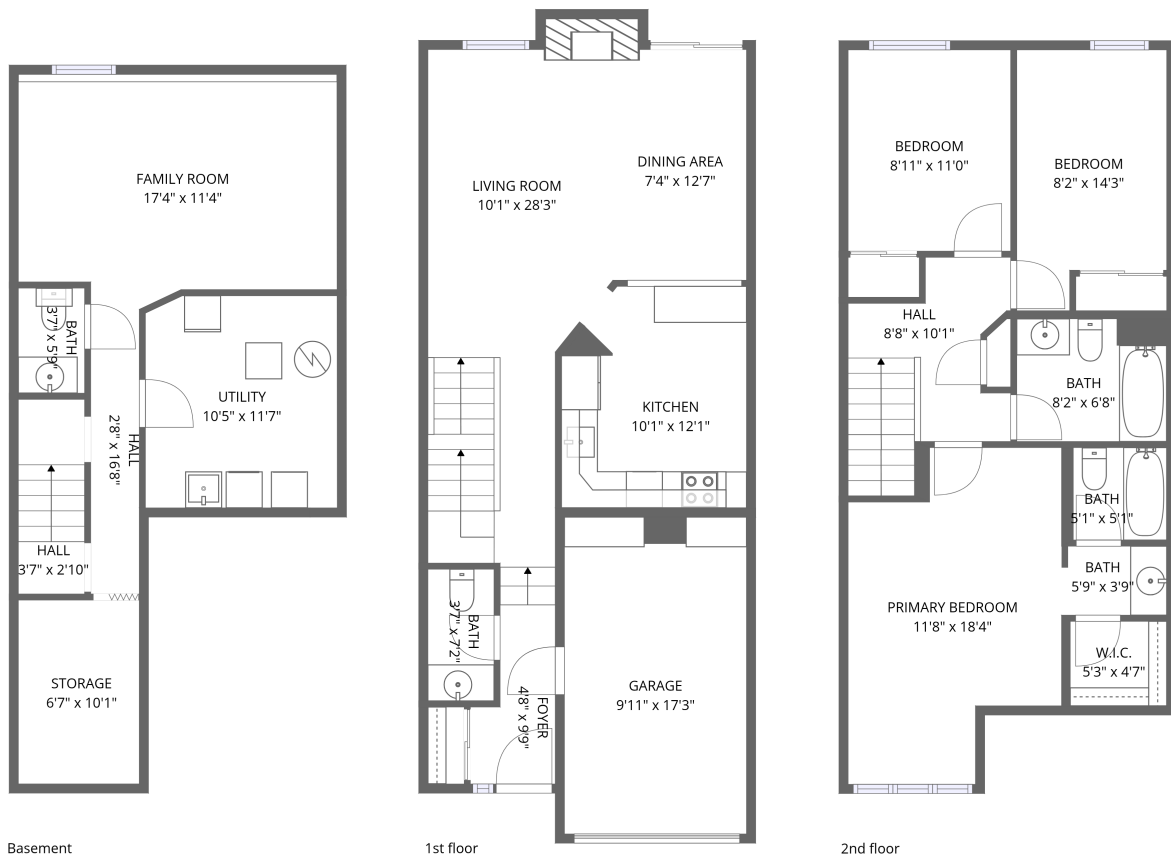


Home data report

1516 Briarfield Crescent, Orléans Avalon - Notting Gate - Fallingbrook - Gardenway South, Orléans, Ontario, Canada, K4A




Total Area: 1525 sq. ft

Basement: 326 sq. ft, 1st Floor: 544 sq. ft, 2nd Floor: 655 sq. ft

Excluded: Utility 121 sq. ft, Storage 66 sq. ft, Garage 172 sq. ft, Fireplace 10 sq. ft, Walls: 135 sq. ft

Property summary


 **3** Floors

 **3** Bedrooms

 **2** Bathrooms

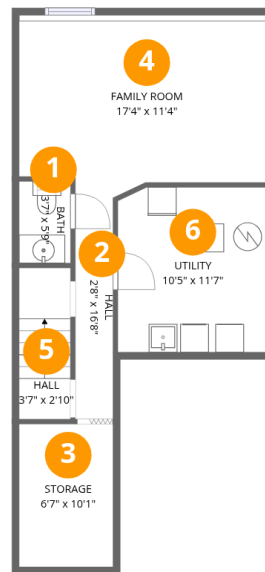
Home data report

**1516 Briarfield Crescent, Orléans Avalon - Notting Gate -
Fallingbrook - Gardenway South, Orléans, Ontario, Canada, K4A**

 **2**
Half baths

 **1**
Garages

**1516 Briarfield Crescent, Orléans Avalon - Notting Gate -
Fallingbrook - Gardenway South, Orléans, Ontario, Canada, K4A**



Room dimensions

Floor 1 Below grade

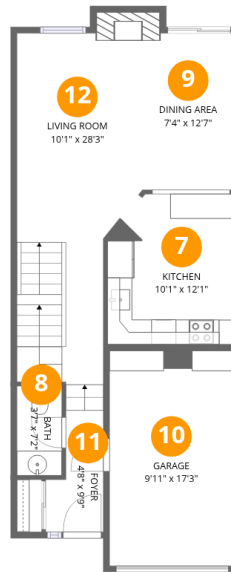
Total:326sqft

Excluded: 187sqft

#		Dimensions	sqft	Counted as living area
1	Bath	3'7" x 5'9"	21 sq. ft	Yes
2	Hall	2'8" x 16'8"	44 sq. ft	Yes
3	Storage	6'7" x 10'1"	66 sq. ft	No
4	Family Room	17'4" x 11'4"	197 sq. ft	Yes
5	Hall	3'7" x 2'10"	10 sq. ft	Yes
6	Utility	10'5" x 11'7"	121 sq. ft	No

Home data report

1516 Briarfield Crescent, Orléans Avalon - Notting Gate - Fallingbrook - Gardenway South, Orléans, Ontario, Canada, K4A



Room dimensions

Floor 2

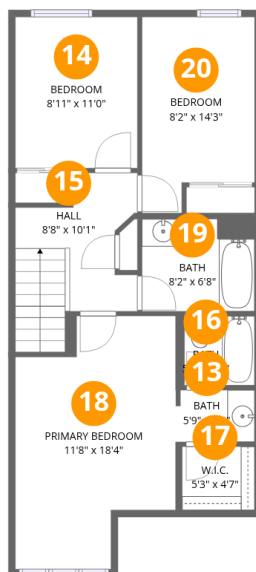
Total:544sqft

Excluded: 182sqft

#		Dimensions	sqft	Counted as living area
7	Kitchen	10'1" x 12'1"	122 sq. ft	Yes
8	Bath	3'7" x 7'2"	26 sq. ft	Yes
9	Dining Area	7'4" x 12'7"	92 sq. ft	Yes
10	Garage	9'11" x 17'3"	172 sq. ft	No
11	Foyer	4'8" x 9'9"	45 sq. ft	Yes
12	Living Room	10'1" x 28'3"	286 sq. ft	Yes

Home data report

1516 Briarfield Crescent, Orléans Avalon - Notting Gate - Fallingbrook - Gardenway South, Orléans, Ontario, Canada, K4A



Room dimensions

Floor 3

Total:655sqft Excluded: 0sqft

#		Dimensions	sqft	Counted as living area
13	Bath	5'9" x 3'9"	21 sq. ft	Yes
14	Bedroom	8'11" x 11'0"	98 sq. ft	Yes
15	Hall	8'8" x 10'1"	87 sq. ft	Yes
16	Bath	5'1" x 5'1"	26 sq. ft	Yes
17	W.I.C.	5'3" x 4'7"	24 sq. ft	Yes
18	Primary Bedroom	11'8" x 18'4"	214 sq. ft	Yes
19	Bath	8'2" x 6'8"	55 sq. ft	Yes
20	Bedroom	8'2" x 14'3"	116 sq. ft	Yes

1516 Briarfield Crescent, Orléans Avalon - Notting Gate - Fallingbrook - Gardenway South, Orléans, Ontario, Canada, K4A

1 Floor 1 - Bath



Dimensions: 3'7" x 5'9"
Area: 21 sq. ft
Counted as living area: Yes

Heated: Yes
Finished: Yes
Enclosed: Yes
Contiguous: Yes
Permitted: Yes
Wet space: Yes
Addition: No
Conversion: No

2 Floor 1 - Hall



Dimensions: 2'8" x 16'8"
Area: 44 sq. ft
Counted as living area: Yes

Heated: Yes
Finished: Yes
Enclosed: Yes
Contiguous: Yes
Permitted: Yes
Wet space: No
Addition: No
Conversion: No

1516 Briarfield Crescent, Orléans Avalon - Notting Gate - Fallingbrook - Gardenway South, Orléans, Ontario, Canada, K4A

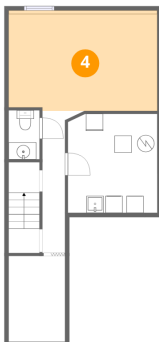
3 Floor 1 - Storage



Dimensions: 6'7" x 10'1"
Area: 66 sq. ft
Counted as living area: No

Heated: No
Finished: No
Enclosed: No
Contiguous: Yes
Permitted: Yes
Wet space: No
Addition: No
Conversion: No

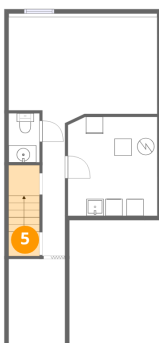
4 Floor 1 - Family Room



Dimensions: 17'4" x 11'4"
Area: 197 sq. ft
Counted as living area: Yes

Heated: Yes
Finished: Yes
Enclosed: Yes
Contiguous: Yes
Permitted: Yes
Wet space: No
Addition: No
Conversion: No

5 Floor 1 - Hall



Dimensions: 3'7" x 2'10"
Area: 10 sq. ft
Counted as living area: Yes

Heated: Yes
Finished: Yes
Enclosed: Yes
Contiguous: Yes
Permitted: Yes
Wet space: No
Addition: No
Conversion: No

1516 Briarfield Crescent, Orléans Avalon - Notting Gate - Fallingbrook - Gardenway South, Orléans, Ontario, Canada, K4A

6 Floor 1 - Utility



Dimensions: 10'5" x 11'7"
Area: 121 sq. ft
Counted as living area: No

Heated: Yes
Finished: No
Enclosed: Yes
Contiguous: Yes
Permitted: Yes
Wet space: No
Addition: No
Conversion: No

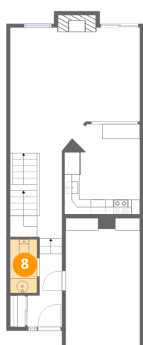
7 Floor 2 - Kitchen



Dimensions: 10'1" x 12'1"
Area: 122 sq. ft
Counted as living area: Yes

Heated: Yes
Finished: Yes
Enclosed: Yes
Contiguous: Yes
Permitted: Yes
Wet space: No
Addition: No
Conversion: No

8 Floor 2 - Bath



Dimensions: 3'7" x 7'2"
Area: 26 sq. ft
Counted as living area: Yes

Heated: Yes
Finished: Yes
Enclosed: Yes
Contiguous: Yes
Permitted: Yes
Wet space: Yes
Addition: No
Conversion: No

1516 Briarfield Crescent, Orléans Avalon - Notting Gate -
Fallingbrook - Gardenway South, Orléans, Ontario, Canada, K4A

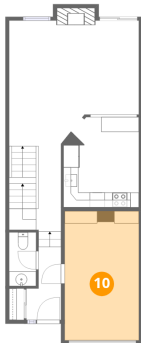
9 Floor 2 - Dining Area



Dimensions: 7'4" x 12'7"
Area: 92 sq. ft
Counted as living area: Yes

Heated: Yes
Finished: Yes
Enclosed: Yes
Contiguous: Yes
Permitted: Yes
Wet space: No
Addition: No
Conversion: No

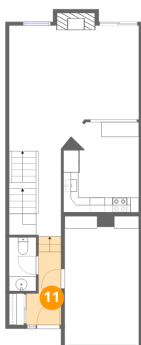
10 Floor 2 - Garage



Dimensions: 9'11" x 17'3"
Area: 172 sq. ft
Counted as living area: No

Heated: No
Finished: No
Enclosed: Yes
Contiguous: Yes
Permitted: Yes
Wet space: No
Addition: No
Conversion: No

11 Floor 2 - Foyer

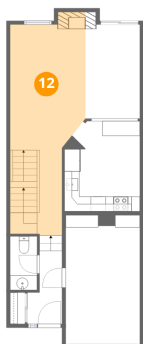


Dimensions: 4'8" x 9'9"
Area: 45 sq. ft
Counted as living area: Yes

Heated: Yes
Finished: Yes
Enclosed: Yes
Contiguous: Yes
Permitted: Yes
Wet space: No
Addition: No
Conversion: No

1516 Briarfield Crescent, Orléans Avalon - Notting Gate - Fallingbrook - Gardenway South, Orléans, Ontario, Canada, K4A

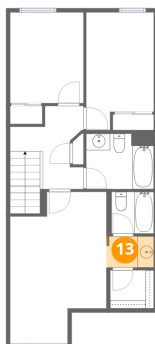
12 Floor 2 - Living Room



Dimensions: 10'1" x 28'3"
Area: 286 sq. ft
Counted as living area: Yes

Heated: Yes
Finished: Yes
Enclosed: Yes
Contiguous: Yes
Permitted: Yes
Wet space: No
Addition: No
Conversion: No

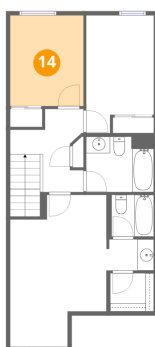
13 Floor 3 - Bath



Dimensions: 5'9" x 3'9"
Area: 21 sq. ft
Counted as living area: Yes

Heated: Yes
Finished: Yes
Enclosed: Yes
Contiguous: Yes
Permitted: Yes
Wet space: Yes
Addition: No
Conversion: No

14 Floor 3 - Bedroom

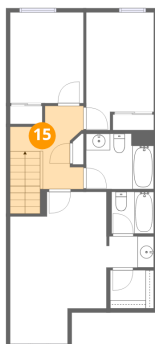


Dimensions: 8'11" x 11'0"
Area: 98 sq. ft
Counted as living area: Yes

Heated: Yes
Finished: Yes
Enclosed: Yes
Contiguous: Yes
Permitted: Yes
Wet space: No
Addition: No
Conversion: No

1516 Briarfield Crescent, Orléans Avalon - Notting Gate - Fallingbrook - Gardenway South, Orléans, Ontario, Canada, K4A

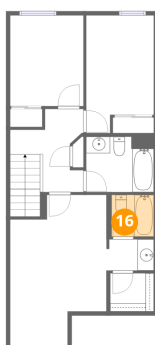
15 Floor 3 - Hall



Dimensions: 8'8" x 10'1"
Area: 87 sq. ft
Counted as living area: Yes

Heated: Yes
Finished: Yes
Enclosed: Yes
Contiguous: Yes
Permitted: Yes
Wet space: No
Addition: No
Conversion: No

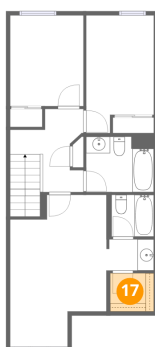
16 Floor 3 - Bath



Dimensions: 5'1" x 5'1"
Area: 26 sq. ft
Counted as living area: Yes

Heated: Yes
Finished: Yes
Enclosed: Yes
Contiguous: Yes
Permitted: Yes
Wet space: Yes
Addition: No
Conversion: No

17 Floor 3 - W.I.C.

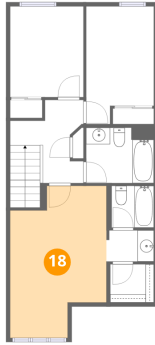


Dimensions: 5'3" x 4'7"
Area: 24 sq. ft
Counted as living area: Yes

Heated: Yes
Finished: Yes
Enclosed: Yes
Contiguous: Yes
Permitted: Yes
Wet space: No
Addition: No
Conversion: No

1516 Briarfield Crescent, Orléans Avalon - Notting Gate -
Fallingbrook - Gardenway South, Orléans, Ontario, Canada, K4A

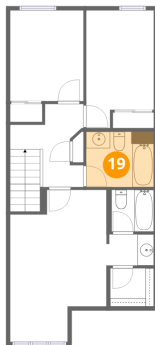
18 Floor 3 - Primary Bedroom



Dimensions: 11'8" x 18'4"
Area: 214 sq. ft
Counted as living area: Yes

Heated: Yes
Finished: Yes
Enclosed: Yes
Contiguous: Yes
Permitted: Yes
Wet space: No
Addition: No
Conversion: No

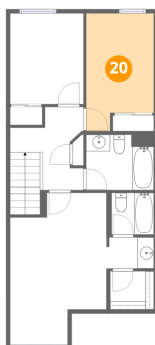
19 Floor 3 - Bath



Dimensions: 8'2" x 6'8"
Area: 55 sq. ft
Counted as living area: Yes

Heated: Yes
Finished: Yes
Enclosed: Yes
Contiguous: Yes
Permitted: Yes
Wet space: Yes
Addition: No
Conversion: No

20 Floor 3 - Bedroom



Dimensions: 8'2" x 14'3"
Area: 116 sq. ft
Counted as living area: Yes

Heated: Yes
Finished: Yes
Enclosed: Yes
Contiguous: Yes
Permitted: Yes
Wet space: No
Addition: No
Conversion: No