

Home report

15016 Walnut Bend Road, Woodlake, Midlothian, Chesterfield County, Virginia, United States, 23112



Total Area: 2804 sq. ft


Ground Floor: 1405 sq. ft, 1st Floor: 1399 sq. ft

Excluded: Garage 532 sq. ft, Embedded window 11 sq. ft, Open to below 265 sq. ft, Low ceiling 28 sq. ft, Walls: 236 sq. ft

Property summary

 **2** Floors

 **4** Bedrooms

 **2** Bathrooms

Home report

**15016 Walnut Bend Road, Woodlake, Midlothian, Chesterfield
County, Virginia, United States, 23112**



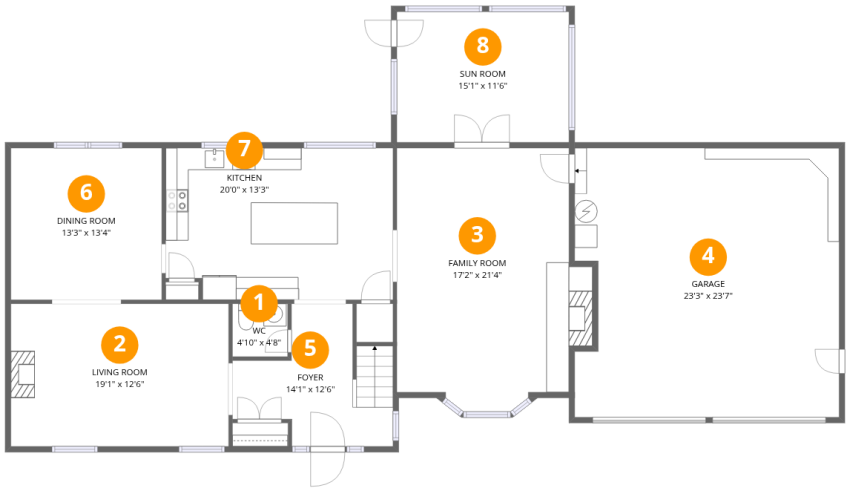
1
Half baths



1
Garages

Home report

15016 Walnut Bend Road, Woodlake, Midlothian, Chesterfield County, Virginia, United States, 23112



Room dimensions

Floor 1 Total:1405sqft Excluded: 543sqft

#		Dimensions	sqft	Counted as living area
1	WC	4'10" x 4'8"	23 sq. ft	Yes
2	Living Room	19'1" x 12'6"	239 sq. ft	Yes
3	Family Room	17'2" x 21'4"	338 sq. ft	Yes
4	Garage	23'3" x 23'7"	532 sq. ft	No
5	Foyer	14'1" x 12'6"	124 sq. ft	Yes
6	Dining Room	13'3" x 13'4"	177 sq. ft	Yes
7	Kitchen	20'0" x 13'3"	260 sq. ft	Yes
8	Sun Room	15'1" x 11'6"	173 sq. ft	Yes

Home report

15016 Walnut Bend Road, Woodlake, Midlothian, Chesterfield
County, Virginia, United States, 23112



Room dimensions

Floor 2 Total:1399sqft Excluded: 293sqft

#		Dimensions	sqft	Counted as living area
9	Open To Below	15'1" x 7'5"	112 sq. ft	No
10	Laundry	5'1" x 8'9"	44 sq. ft	Yes
11	Bath	8'11" x 8'0"	65 sq. ft	Yes
12	Hall	19'7" x 8'2"	124 sq. ft	Yes
13	W.I.C.	6'2" x 9'10"	51 sq. ft	Yes
14	W.I.C.	4'11" x 6'1"	25 sq. ft	Yes
15	Primary Bedroom	15'5" x 18'1"	256 sq. ft	Yes
16	Bedroom	10'4" x 12'11"	134 sq. ft	Yes
17	Bedroom	13'9" x 22'4"	247 sq. ft	Yes
18	Bedroom	19'7" x 11'6"	174 sq. ft	Yes
19	Bath	11'1" x 9'10"	97 sq. ft	Yes

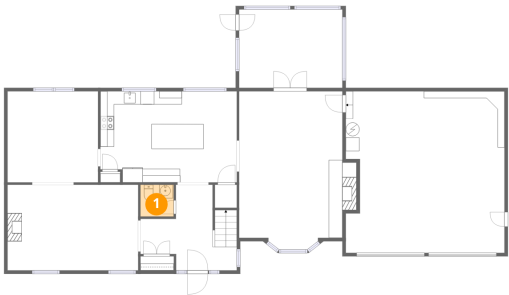
Home report

15016 Walnut Bend Road, Woodlake, Midlothian, Chesterfield
County, Virginia, United States, 23112

#		Dimensions	sqft	Counted as living area
20	Open To Below	15'1" x 10'1"	152 sq. ft	No
21	Hall	20'6" x 3'3"	77 sq. ft	Yes

15016 Walnut Bend Road, Woodlake, Midlothian, Chesterfield
County, Virginia, United States, 23112

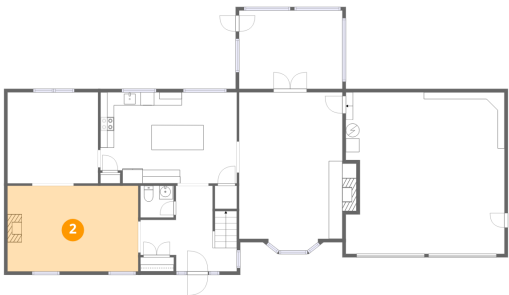
1 Floor 1 - WC



Dimensions: 4'10" x 4'8"
Area: 23 sq. ft
Counted as living area: Yes

Heated: Yes
Finished: Yes
Enclosed: Yes
Contiguous: Yes
Permitted: Yes
Wet space: Yes
Addition: No
Conversion: No

2 Floor 1 - Living Room



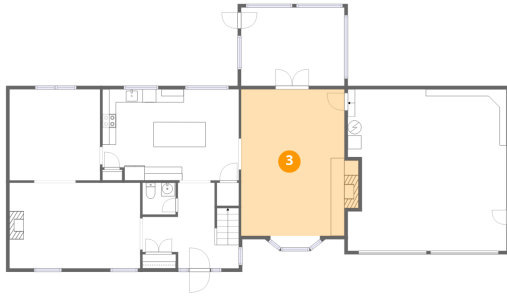
Dimensions: 19'1" x 12'6"
Area: 239 sq. ft
Counted as living area: Yes

Heated: Yes
Finished: Yes
Enclosed: Yes
Contiguous: Yes
Permitted: Yes
Wet space: No
Addition: No
Conversion: No

Home report

15016 Walnut Bend Road, Woodlake, Midlothian, Chesterfield County, Virginia, United States, 23112

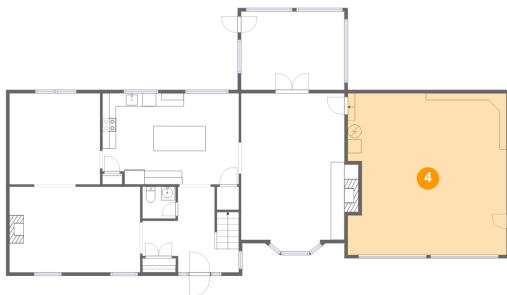
3 Floor 1 - Family Room



Dimensions: 17'2" x 21'4"
Area: 338 sq. ft
Counted as living area: Yes

Heated: Yes
Finished: Yes
Enclosed: Yes
Contiguous: Yes
Permitted: Yes
Wet space: No
Addition: No
Conversion: No

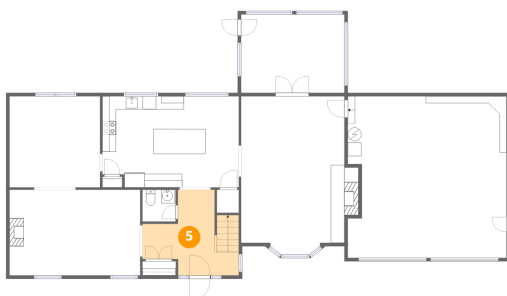
4 Floor 1 - Garage



Dimensions: 23'3" x 23'7"
Area: 532 sq. ft
Counted as living area: No

Heated: No
Finished: No
Enclosed: Yes
Contiguous: Yes
Permitted: Yes
Wet space: No
Addition: No
Conversion: No

5 Floor 1 - Foyer



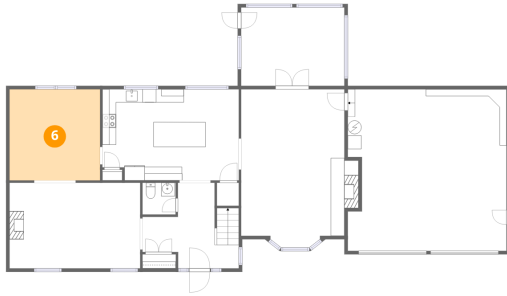
Dimensions: 14'1" x 12'6"
Area: 124 sq. ft
Counted as living area: Yes

Heated: Yes
Finished: Yes
Enclosed: Yes
Contiguous: Yes
Permitted: Yes
Wet space: No
Addition: No
Conversion: No

Home report

15016 Walnut Bend Road, Woodlake, Midlothian, Chesterfield County, Virginia, United States, 23112

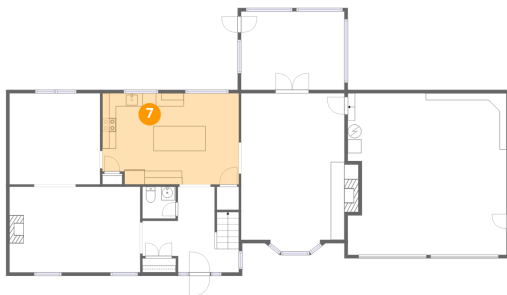
6 Floor 1 - Dining Room



Dimensions: 13'3" x 13'4"
Area: 177 sq. ft
Counted as living area: Yes

Heated: Yes
Finished: Yes
Enclosed: Yes
Contiguous: Yes
Permitted: Yes
Wet space: No
Addition: No
Conversion: No

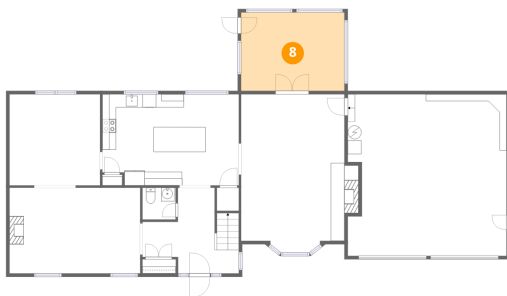
7 Floor 1 - Kitchen



Dimensions: 20'0" x 13'3"
Area: 260 sq. ft
Counted as living area: Yes

Heated: Yes
Finished: Yes
Enclosed: Yes
Contiguous: Yes
Permitted: Yes
Wet space: No
Addition: No
Conversion: No

8 Floor 1 - Sun Room

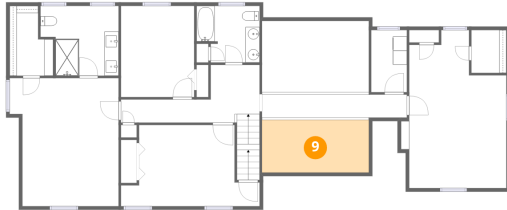


Dimensions: 15'1" x 11'6"
Area: 173 sq. ft
Counted as living area: Yes

Heated: Yes
Finished: Yes
Enclosed: Yes
Contiguous: Yes
Permitted: Yes
Wet space: No
Addition: No
Conversion: No

15016 Walnut Bend Road, Woodlake, Midlothian, Chesterfield County, Virginia, United States, 23112

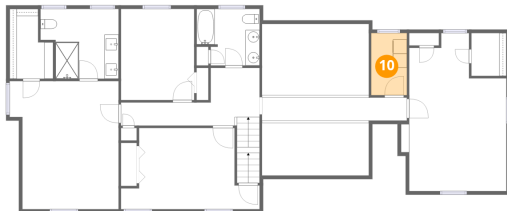
9 Floor 2 - Open To Below



Dimensions: 15'1" x 7'5"
Area: 112 sq. ft
Counted as living area: No

Heated: No
Finished: No
Enclosed: No
Contiguous: Yes
Permitted: No
Wet space: No
Addition: No
Conversion: No

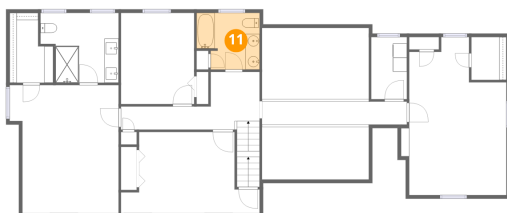
10 Floor 2 - Laundry



Dimensions: 5'1" x 8'9"
Area: 44 sq. ft
Counted as living area: Yes

Heated: Yes
Finished: Yes
Enclosed: Yes
Contiguous: Yes
Permitted: Yes
Wet space: No
Addition: No
Conversion: No

11 Floor 2 - Bath

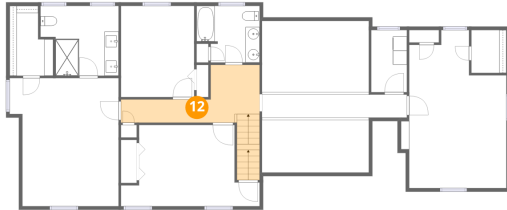


Dimensions: 8'11" x 8'0"
Area: 65 sq. ft
Counted as living area: Yes

Heated: Yes
Finished: Yes
Enclosed: Yes
Contiguous: Yes
Permitted: Yes
Wet space: Yes
Addition: No
Conversion: No

15016 Walnut Bend Road, Woodlake, Midlothian, Chesterfield
County, Virginia, United States, 23112

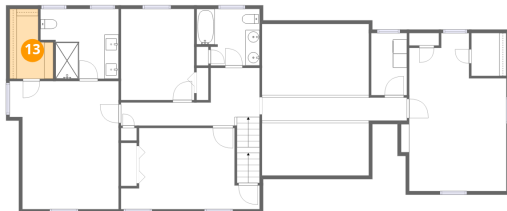
12 Floor 2 - Hall



Dimensions: 19'7" x 8'2"
Area: 124 sq. ft
Counted as living area: Yes

Heated: Yes
Finished: Yes
Enclosed: Yes
Contiguous: Yes
Permitted: Yes
Wet space: No
Addition: No
Conversion: No

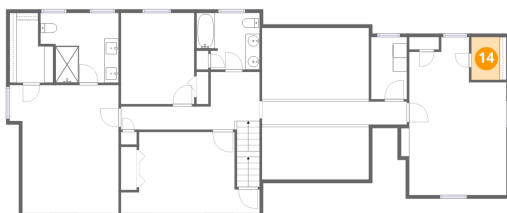
13 Floor 2 - W.I.C.



Dimensions: 6'2" x 9'10"
Area: 51 sq. ft
Counted as living area: Yes

Heated: Yes
Finished: Yes
Enclosed: Yes
Contiguous: Yes
Permitted: Yes
Wet space: No
Addition: No
Conversion: No

14 Floor 2 - W.I.C.



Dimensions: 4'11" x 6'1"
Area: 25 sq. ft
Counted as living area: Yes

Heated: Yes
Finished: Yes
Enclosed: Yes
Contiguous: Yes
Permitted: Yes
Wet space: No
Addition: No
Conversion: No

15016 Walnut Bend Road, Woodlake, Midlothian, Chesterfield County, Virginia, United States, 23112

15 Floor 2 - Primary Bedroom



Dimensions: 15'5" x 18'1"
Area: 256 sq. ft
Counted as living area: Yes

Heated: Yes
Finished: Yes
Enclosed: Yes
Contiguous: Yes
Permitted: Yes
Wet space: No
Addition: No
Conversion: No

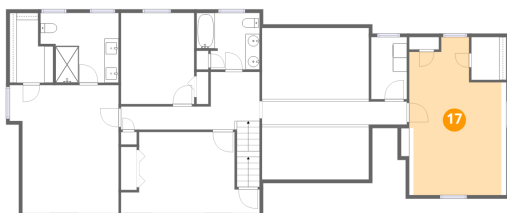
16 Floor 2 - Bedroom



Dimensions: 10'4" x 12'11"
Area: 134 sq. ft
Counted as living area: Yes

Heated: Yes
Finished: Yes
Enclosed: Yes
Contiguous: Yes
Permitted: Yes
Wet space: No
Addition: No
Conversion: No

17 Floor 2 - Bedroom

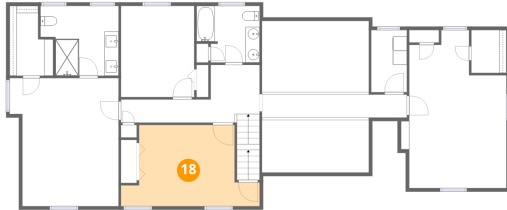


Dimensions: 13'9" x 22'4"
Area: 247 sq. ft
Counted as living area: Yes

Heated: Yes
Finished: Yes
Enclosed: Yes
Contiguous: Yes
Permitted: Yes
Wet space: No
Addition: No
Conversion: No

15016 Walnut Bend Road, Woodlake, Midlothian, Chesterfield County, Virginia, United States, 23112

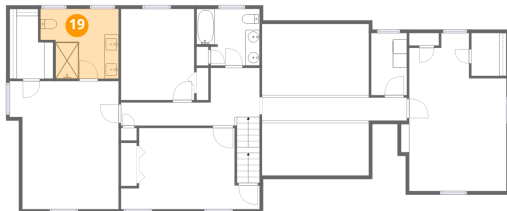
18 Floor 2 - Bedroom



Dimensions: 19'7" x 11'6"
Area: 174 sq. ft
Counted as living area: Yes

Heated: Yes
Finished: Yes
Enclosed: Yes
Contiguous: Yes
Permitted: Yes
Wet space: No
Addition: No
Conversion: No

19 Floor 2 - Bath



Dimensions: 11'1" x 9'10"
Area: 97 sq. ft
Counted as living area: Yes

Heated: Yes
Finished: Yes
Enclosed: Yes
Contiguous: Yes
Permitted: Yes
Wet space: Yes
Addition: No
Conversion: No

20 Floor 2 - Open To Below

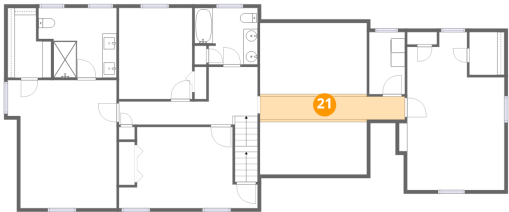


Dimensions: 15'1" x 10'1"
Area: 152 sq. ft
Counted as living area: No

Heated: No
Finished: No
Enclosed: No
Contiguous: Yes
Permitted: No
Wet space: No
Addition: No
Conversion: No

15016 Walnut Bend Road, Woodlake, Midlothian, Chesterfield
County, Virginia, United States, 23112

21 Floor 2 - Hall



Dimensions: 20'6" x 3'3"
Area: 77 sq. ft
Counted as living area: Yes

Heated: Yes
Finished: Yes
Enclosed: Yes
Contiguous: Yes
Permitted: Yes
Wet space: No
Addition: No
Conversion: No