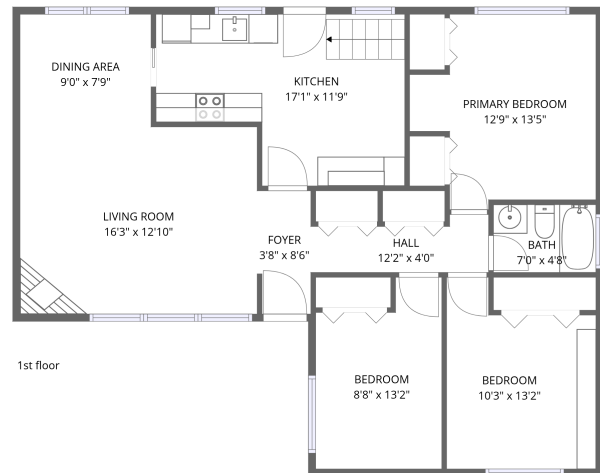
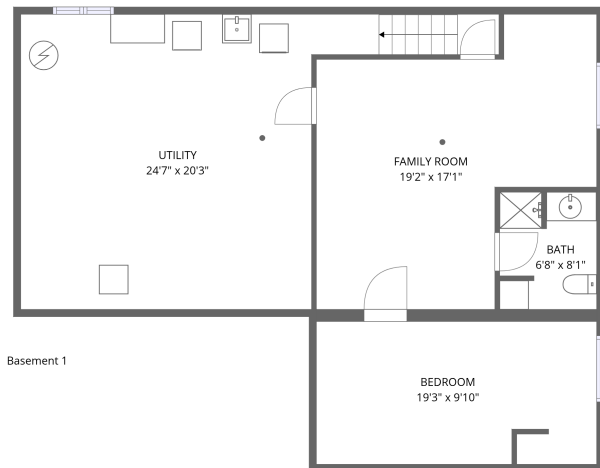


24 Parkmount Crescent, Trend - Arlington, Trend Village, Nepean, Ontario, Canada, K2H 5T4



Total Area: 1580 sq. ft

Basement 1: 564 sq. ft, 1st Floor: 1016 sq. ft

Excluded: Utility 439 sq. ft, Walls: 144 sq. ft

Property summary



24 Parkmount Crescent, Trend - Arlington, Trend Village, Nepean, Ontario, Canada, K2H 5T4



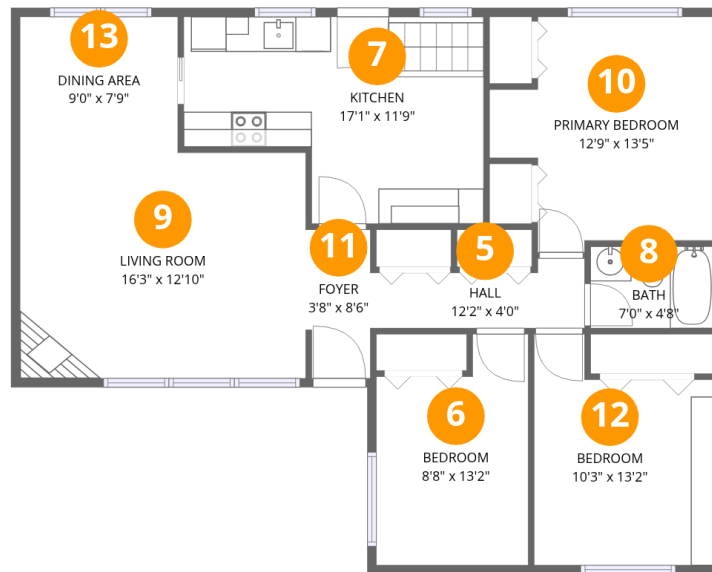
Room dimensions

Floor 1 Below grade Total:564sqft Excluded: 439sqft

#		Dimensions	sqft	Counted as living area
1	Bath	6'8" x 8'1"	54 sq. ft	Yes
2	Utility	24'7" x 20'3"	497 sq. ft	No
3	Bedroom	19'3" x 9'10"	188 sq. ft	Yes
4	Family Room	19'2" x 17'1"	329 sq. ft	Yes



24 Parkmount Crescent, Trend - Arlington, Trend Village, Nepean, Ontario, Canada, K2H 5T4



Room dimensions

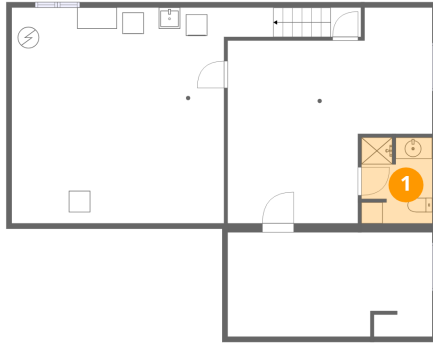
Floor 2

Total:1016sqft Excluded: 0sqft

#		Dimensions	sqft	Counted as living area
5	Hall	12'2" x 4'0"	48 sq. ft	Yes
6	Bedroom	8'8" x 13'2"	114 sq. ft	Yes
7	Kitchen	17'1" x 11'9"	201 sq. ft	Yes
8	Bath	7'0" x 4'8"	33 sq. ft	Yes
9	Living Room	16'3" x 12'10"	209 sq. ft	Yes
10	Primary Bedroom	12'9" x 13'5"	171 sq. ft	Yes
11	Foyer	3'8" x 8'6"	31 sq. ft	Yes
12	Bedroom	10'3" x 13'2"	135 sq. ft	Yes
13	Dining Area	9'0" x 7'9"	69 sq. ft	Yes



1 Floor 1 - Bath



Dimensions: 6'8" x 8'1"
Area: 54 sq. ft
Counted as living area: Yes

Heated: Yes
Finished: Yes
Enclosed: Yes
Contiguous: Yes
Permitted: Yes
Wet space: Yes
Addition: No
Conversion: No

2 Floor 1 - Utility

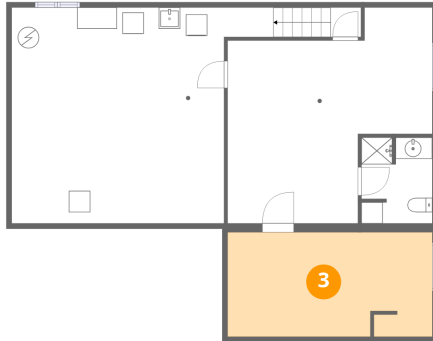


Dimensions: 24'7" x 20'3"
Area: 497 sq. ft
Counted as living area: No

Heated: Yes
Finished: No
Enclosed: Yes
Contiguous: Yes
Permitted: Yes
Wet space: No
Addition: No
Conversion: No



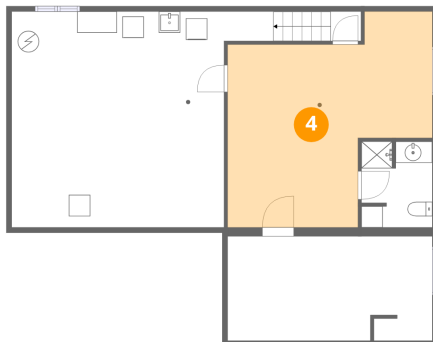
3 Floor 1 - Bedroom



Dimensions: 19'3" x 9'10"
Area: 188 sq. ft
Counted as living area: Yes

Heated: Yes
Finished: Yes
Enclosed: Yes
Contiguous: Yes
Permitted: Yes
Wet space: No
Addition: No
Conversion: No

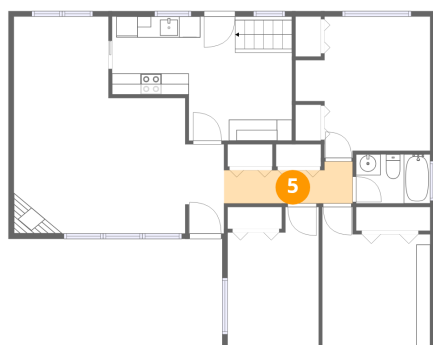
4 Floor 1 - Family Room



Dimensions: 19'2" x 17'1"
Area: 329 sq. ft
Counted as living area: Yes

Heated: Yes
Finished: Yes
Enclosed: Yes
Contiguous: Yes
Permitted: Yes
Wet space: No
Addition: No
Conversion: No

5 Floor 2 - Hall

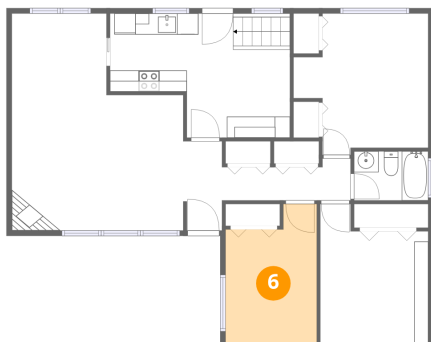


Dimensions: 12'2" x 4'0"
Area: 48 sq. ft
Counted as living area: Yes

Heated: Yes
Finished: Yes
Enclosed: Yes
Contiguous: Yes
Permitted: Yes
Wet space: No
Addition: No
Conversion: No



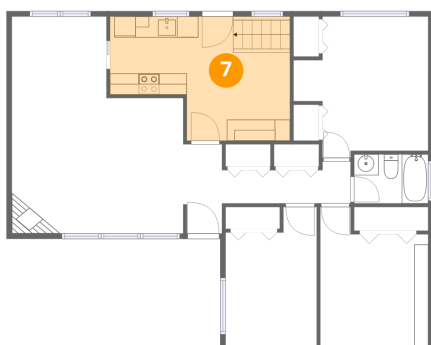
6 Floor 2 - Bedroom



Dimensions: 8'8" x 13'2"
Area: 114 sq. ft
Counted as living area: Yes

Heated: Yes
Finished: Yes
Enclosed: Yes
Contiguous: Yes
Permitted: Yes
Wet space: No
Addition: No
Conversion: No

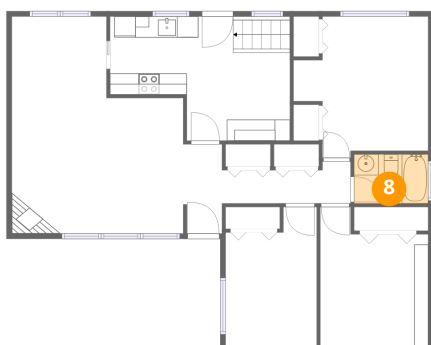
7 Floor 2 - Kitchen



Dimensions: 17'1" x 11'9"
Area: 201 sq. ft
Counted as living area: Yes

Heated: Yes
Finished: Yes
Enclosed: Yes
Contiguous: Yes
Permitted: Yes
Wet space: No
Addition: No
Conversion: No

8 Floor 2 - Bath

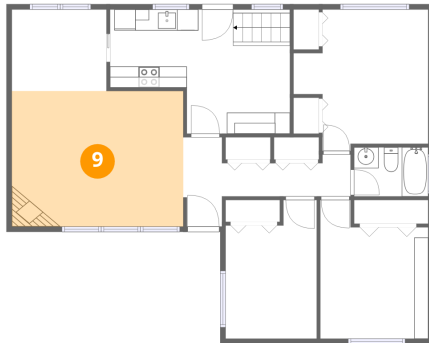


Dimensions: 7'0" x 4'8"
Area: 33 sq. ft
Counted as living area: Yes

Heated: Yes
Finished: Yes
Enclosed: Yes
Contiguous: Yes
Permitted: Yes
Wet space: Yes
Addition: No
Conversion: No



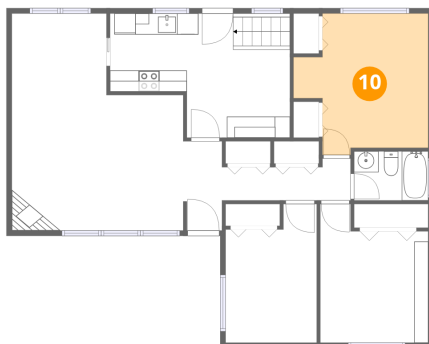
9 Floor 2 - Living Room



Dimensions: 16'3" x 12'10"
Area: 209 sq. ft
Counted as living area: Yes

Heated: Yes
Finished: Yes
Enclosed: Yes
Contiguous: Yes
Permitted: Yes
Wet space: No
Addition: No
Conversion: No

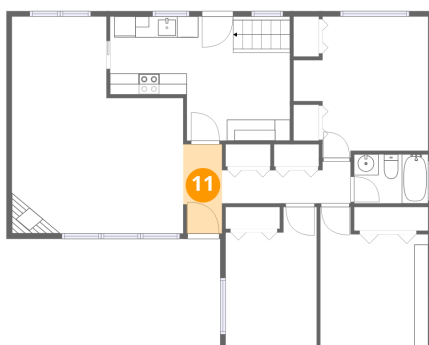
10 Floor 2 - Primary Bedroom



Dimensions: 12'9" x 13'5"
Area: 171 sq. ft
Counted as living area: Yes

Heated: Yes
Finished: Yes
Enclosed: Yes
Contiguous: Yes
Permitted: Yes
Wet space: No
Addition: No
Conversion: No

11 Floor 2 - Foyer

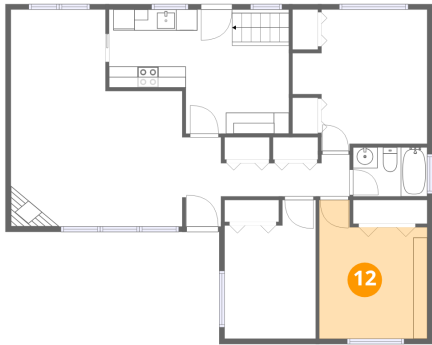


Dimensions: 3'8" x 8'6"
Area: 31 sq. ft
Counted as living area: Yes

Heated: Yes
Finished: Yes
Enclosed: Yes
Contiguous: Yes
Permitted: Yes
Wet space: No
Addition: No
Conversion: No



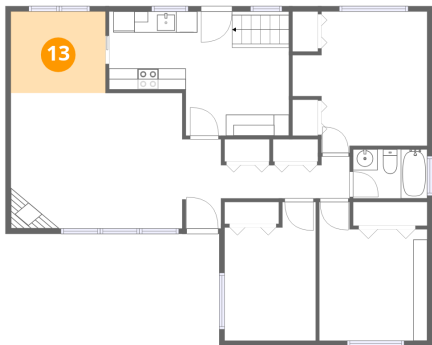
12 Floor 2 - Bedroom



Dimensions: 10'3" x 13'2"
Area: 135 sq. ft
Counted as living area: Yes

Heated: Yes
Finished: Yes
Enclosed: Yes
Contiguous: Yes
Permitted: Yes
Wet space: No
Addition: No
Conversion: No

13 Floor 2 - Dining Area



Dimensions: 9'0" x 7'9"
Area: 69 sq. ft
Counted as living area: Yes

Heated: Yes
Finished: Yes
Enclosed: Yes
Contiguous: Yes
Permitted: Yes
Wet space: No
Addition: No
Conversion: No