



Total Area: 1771 sq. ft

Basement: 0 sq. ft, 1st Floor: 784 sq. ft, 2nd Floor: 987 sq. ft


Excluded: Basement 784 sq. ft, Garage 757 sq. ft, Open to below 86 sq. ft, Walls: 244 sq. ft

Property summary

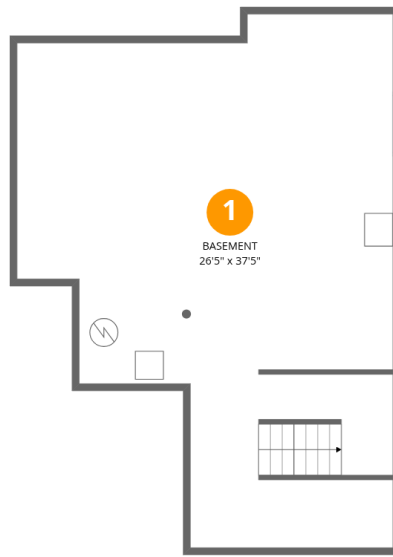


Home data report

688 S Depot Dr, Milliken, CO, US

 **1**
Half baths

 **1**
Garages



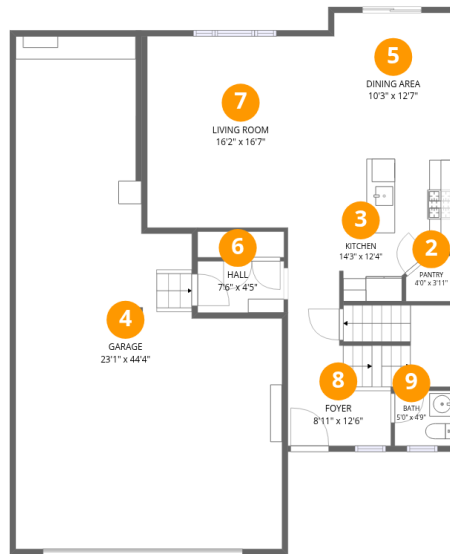
Room dimensions

Floor 1 Below grade

Total: 0sqft

Excluded: 784sqft

#		Dimensions	sqft	Counted as living area
1	Basement	26'5" x 37'5"	778 sq. ft	No



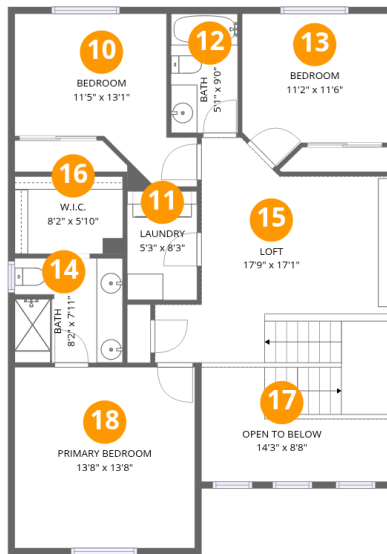
Room dimensions

Floor 2

Total: 784 sqft

Excluded: 757 sqft

#		Dimensions	sqft	Counted as living area
2	Pantry	4'0" x 3'11"	14 sq. ft	Yes
3	Kitchen	14'3" x 12'4"	134 sq. ft	Yes
4	Garage	23'1" x 44'4"	757 sq. ft	No
5	Dining Area	10'3" x 12'7"	129 sq. ft	Yes
6	Hall	7'6" x 4'5"	33 sq. ft	Yes
7	Living Room	16'2" x 16'7"	268 sq. ft	Yes
8	Foyer	8'11" x 12'6"	144 sq. ft	Yes
9	Bath	5'0" x 4'9"	24 sq. ft	Yes



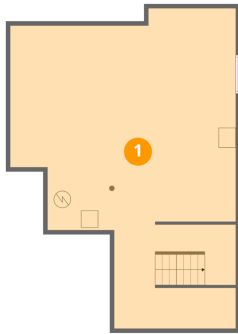
Room dimensions

Floor 3

Total:987sqft Excluded: 86sqft

#		Dimensions	sqft	Counted as living area
10	Bedroom	11'5" x 13'1"	126 sq. ft	Yes
11	Laundry	5'3" x 8'3"	44 sq. ft	Yes
12	Bath	5'1" x 9'0"	46 sq. ft	Yes
13	Bedroom	11'2" x 11'6"	112 sq. ft	Yes
14	Bath	8'2" x 7'11"	64 sq. ft	Yes
15	Loft	17'9" x 17'1"	271 sq. ft	Yes
16	W.I.C.	8'2" x 5'10"	48 sq. ft	Yes
17	Open To Below	14'3" x 8'8"	86 sq. ft	No
18	Primary Bedroom	13'8" x 13'8"	187 sq. ft	Yes

1 Floor 1 - Basement



Dimensions: 26'5" x 37'5"
Area: 778 sq. ft
Counted as living area: No

Heated: Yes
Finished: No
Enclosed: Yes
Contiguous: Yes
Permitted: Yes
Wet space: No
Addition: No
Conversion: No

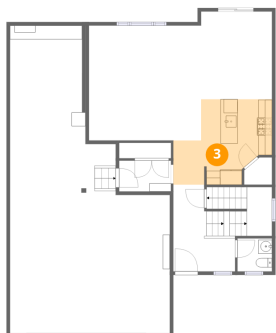
2 Floor 2 - Pantry



Dimensions: 4'0" x 3'11"
Area: 14 sq. ft
Counted as living area: Yes

Heated: Yes
Finished: Yes
Enclosed: Yes
Contiguous: Yes
Permitted: Yes
Wet space: No
Addition: No
Conversion: No

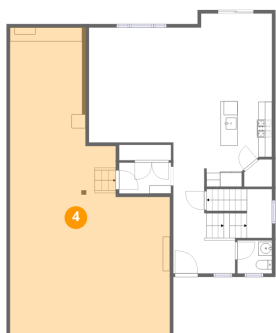
3 Floor 2 - Kitchen



Dimensions: 14'3" x 12'4"
Area: 134 sq. ft
Counted as living area: Yes

Heated: Yes
Finished: Yes
Enclosed: Yes
Contiguous: Yes
Permitted: Yes
Wet space: No
Addition: No
Conversion: No

4 Floor 2 - Garage



Dimensions: 23'1" x 44'4"
Area: 757 sq. ft
Counted as living area: No

Heated: No
Finished: No
Enclosed: Yes
Contiguous: Yes
Permitted: Yes
Wet space: No
Addition: No
Conversion: No

5 Floor 2 - Dining Area



Dimensions: 10'3" x 12'7"
Area: 129 sq. ft
Counted as living area: Yes

Heated: Yes
Finished: Yes
Enclosed: Yes
Contiguous: Yes
Permitted: Yes
Wet space: No
Addition: No
Conversion: No

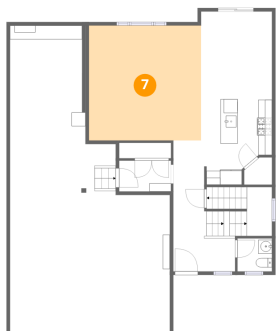
6 Floor 2 - Hall



Dimensions: 7'6" x 4'5"
Area: 33 sq. ft
Counted as living area: Yes

Heated: Yes
Finished: Yes
Enclosed: Yes
Contiguous: Yes
Permitted: Yes
Wet space: No
Addition: No
Conversion: No

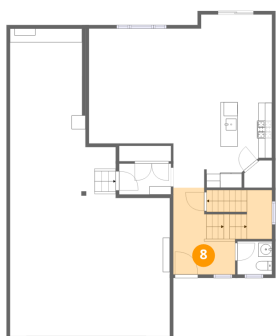
7 Floor 2 - Living Room



Dimensions: 16'2" x 16'7"
Area: 268 sq. ft
Counted as living area: Yes

Heated: Yes
Finished: Yes
Enclosed: Yes
Contiguous: Yes
Permitted: Yes
Wet space: No
Addition: No
Conversion: No

8 Floor 2 - Foyer



Dimensions: 8'11" x 12'6"
Area: 144 sq. ft
Counted as living area: Yes

Heated: Yes
Finished: Yes
Enclosed: Yes
Contiguous: Yes
Permitted: Yes
Wet space: No
Addition: No
Conversion: No

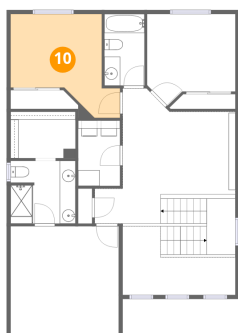
9 Floor 2 - Bath



Dimensions: 5'0" x 4'9"
Area: 24 sq. ft
Counted as living area: Yes

Heated: Yes
Finished: Yes
Enclosed: Yes
Contiguous: Yes
Permitted: Yes
Wet space: Yes
Addition: No
Conversion: No

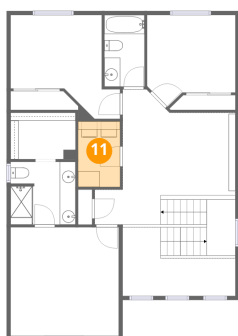
10 Floor 3 - Bedroom



Dimensions: 11'5" x 13'1"
Area: 126 sq. ft
Counted as living area: Yes

Heated: Yes
Finished: Yes
Enclosed: Yes
Contiguous: Yes
Permitted: Yes
Wet space: No
Addition: No
Conversion: No

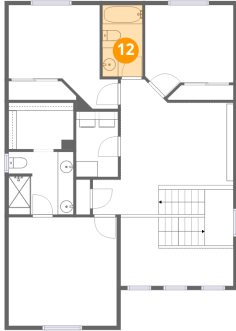
11 Floor 3 - Laundry



Dimensions: 5'3" x 8'3"
Area: 44 sq. ft
Counted as living area: Yes

Heated: Yes
Finished: Yes
Enclosed: Yes
Contiguous: Yes
Permitted: Yes
Wet space: No
Addition: No
Conversion: No

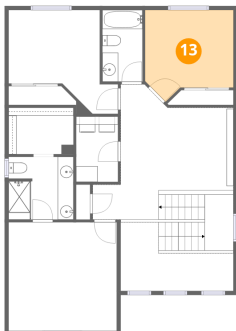
12 Floor 3 - Bath



Dimensions: 5'1" x 9'0"
Area: 46 sq. ft
Counted as living area: Yes

Heated: Yes
Finished: Yes
Enclosed: Yes
Contiguous: Yes
Permitted: Yes
Wet space: Yes
Addition: No
Conversion: No

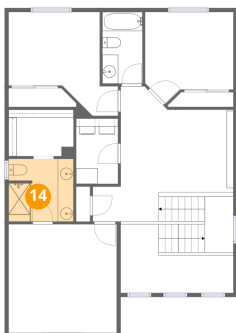
13 Floor 3 - Bedroom



Dimensions: 11'2" x 11'6"
Area: 112 sq. ft
Counted as living area: Yes

Heated: Yes
Finished: Yes
Enclosed: Yes
Contiguous: Yes
Permitted: Yes
Wet space: No
Addition: No
Conversion: No

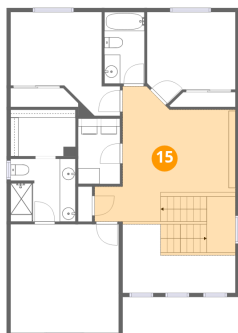
14 Floor 3 - Bath



Dimensions: 8'2" x 7'11"
Area: 64 sq. ft
Counted as living area: Yes

Heated: Yes
Finished: Yes
Enclosed: Yes
Contiguous: Yes
Permitted: Yes
Wet space: Yes
Addition: No
Conversion: No

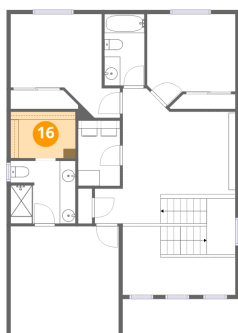
15 Floor 3 - Loft



Dimensions: 17'9" x 17'1"
Area: 271 sq. ft
Counted as living area: Yes

Heated: Yes
Finished: Yes
Enclosed: Yes
Contiguous: Yes
Permitted: Yes
Wet space: No
Addition: No
Conversion: No

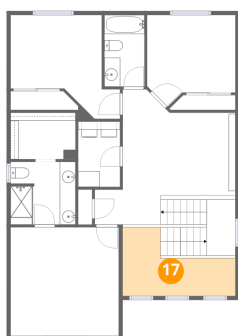
16 Floor 3 - W.I.C.



Dimensions: 8'2" x 5'10"
Area: 48 sq. ft
Counted as living area: Yes

Heated: Yes
Finished: Yes
Enclosed: Yes
Contiguous: Yes
Permitted: Yes
Wet space: No
Addition: No
Conversion: No

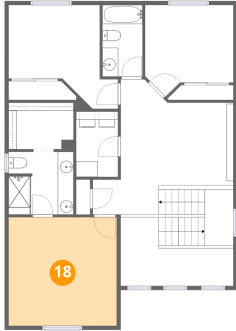
17 Floor 3 - Open To Below



Dimensions: 14'3" x 8'8"
Area: 86 sq. ft
Counted as living area: No

Heated: No
Finished: No
Enclosed: No
Contiguous: Yes
Permitted: No
Wet space: No
Addition: No
Conversion: No

18 Floor 3 - Primary Bedroom



Dimensions: 13'8" x 13'8"
Area: 187 sq. ft
Counted as living area: Yes

Heated: Yes
Finished: Yes
Enclosed: Yes
Contiguous: Yes
Permitted: Yes
Wet space: No
Addition: No
Conversion: No