

Home data report

2267 Andover Circle, Glenbrook Estates, Palm Harbor, Pinellas County, Florida, United States, 34683



Total Area: 1461 sq. ft

Floor 1: 1030 sq. ft, Floor 2: 431 sq. ft

Excluded: Utility 26 sq. ft, Open to below 211 sq. ft, Walls: 96 sq. ft

Property summary

2 Floors

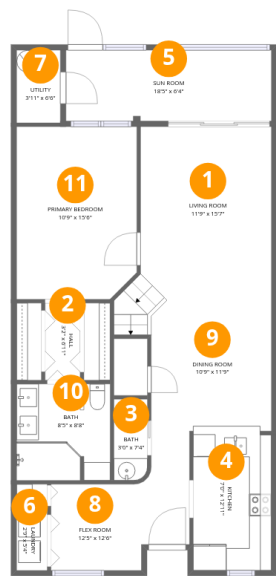
2 Bedrooms

2 Bathrooms

1 Half baths

Home data report

2267 Andover Circle, Glenbrook Estates, Palm Harbor, Pinellas County, Florida, United States, 34683



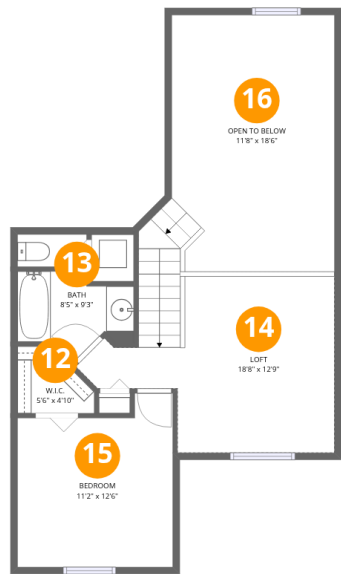
Room dimensions

Floor 1 Total:1030sqft Excluded: 26sqft

#		Dimensions	sqft	Counted as living area
1	Living Room	11'9" x 15'7"	197 sq. ft	Yes
2	Hall	3'2" x 6'11"	22 sq. ft	Yes
3	Bath	3'0" x 7'4"	22 sq. ft	Yes
4	Kitchen	7'0" x 12'11"	90 sq. ft	Yes
5	Sun Room	18'5" x 6'4"	117 sq. ft	Yes
6	Laundry	2'9" x 5'4"	15 sq. ft	Yes
7	Utility	3'11" x 6'6"	26 sq. ft	No
8	Flex Room	12'5" x 12'6"	103 sq. ft	Yes
9	Dining Room	10'9" x 11'9"	123 sq. ft	Yes
10	Bath	8'5" x 8'8"	72 sq. ft	Yes
11	Primary Bedroom	10'9" x 15'6"	164 sq. ft	Yes

Home data report

2267 Andover Circle, Glenbrook Estates, Palm Harbor, Pinellas County, Florida, United States, 34683

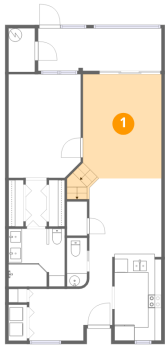


Room dimensions

Floor 2 Total:431sqft Excluded: 211sqft

#		Dimensions	sqft	Counted as living area
12	W.I.C.	5'6" x 4'10"	21 sq. ft	Yes
13	Bath	8'5" x 9'3"	53 sq. ft	Yes
14	Loft	18'8" x 12'9"	200 sq. ft	Yes
15	Bedroom	11'2" x 12'6"	125 sq. ft	Yes
16	Open To Below	11'8" x 18'6"	211 sq. ft	No

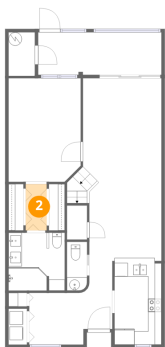
1 Floor 1 - Living Room



Dimensions: 11'9" x 15'7"
Area: 197 sq. ft
Counted as living area: Yes

Heated: Yes
Finished: Yes
Enclosed: Yes
Contiguous: Yes
Permitted: Yes
Wet space: No
Addition: No
Conversion: No

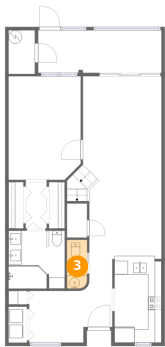
2 Floor 1 - Hall



Dimensions: 3'2" x 6'11"
Area: 22 sq. ft
Counted as living area: Yes

Heated: Yes
Finished: Yes
Enclosed: Yes
Contiguous: Yes
Permitted: Yes
Wet space: No
Addition: No
Conversion: No

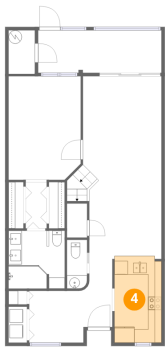
3 Floor 1 - Bath



Dimensions: 3'0" x 7'4"
Area: 22 sq. ft
Counted as living area: Yes

Heated: Yes
Finished: Yes
Enclosed: Yes
Contiguous: Yes
Permitted: Yes
Wet space: Yes
Addition: No
Conversion: No

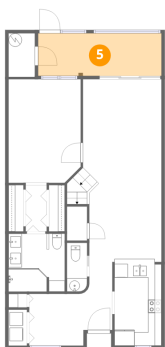
4 Floor 1 - Kitchen



Dimensions: 7'0" x 12'11"
Area: 90 sq. ft
Counted as living area: Yes

Heated: Yes
Finished: Yes
Enclosed: Yes
Contiguous: Yes
Permitted: Yes
Wet space: No
Addition: No
Conversion: No

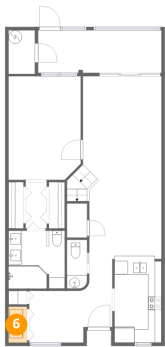
5 Floor 1 - Sun Room



Dimensions: 18'5" x 6'4"
Area: 117 sq. ft
Counted as living area: Yes

Heated: Yes
Finished: Yes
Enclosed: Yes
Contiguous: Yes
Permitted: Yes
Wet space: No
Addition: No
Conversion: No

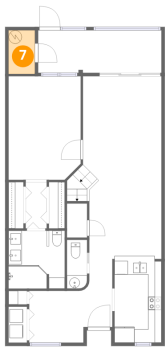
6 Floor 1 - Laundry



Dimensions: 2'9" x 5'4"
Area: 15 sq. ft
Counted as living area: Yes

Heated: Yes
Finished: Yes
Enclosed: Yes
Contiguous: Yes
Permitted: Yes
Wet space: No
Addition: No
Conversion: No

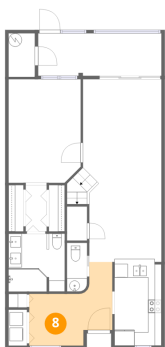
7 Floor 1 - Utility



Dimensions: 3'11" x 6'6"
Area: 26 sq. ft
Counted as living area: No

Heated: Yes
Finished: No
Enclosed: Yes
Contiguous: Yes
Permitted: Yes
Wet space: No
Addition: No
Conversion: No

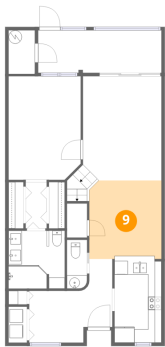
8 Floor 1 - Flex Room



Dimensions: 12'5" x 12'6"
Area: 103 sq. ft
Counted as living area: Yes

Heated: Yes
Finished: Yes
Enclosed: Yes
Contiguous: Yes
Permitted: Yes
Wet space: No
Addition: No
Conversion: No

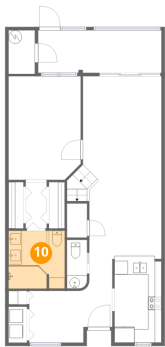
9 Floor 1 - Dining Room



Dimensions: 10'9" x 11'9"
Area: 123 sq. ft
Counted as living area: Yes

Heated: Yes
Finished: Yes
Enclosed: Yes
Contiguous: Yes
Permitted: Yes
Wet space: No
Addition: No
Conversion: No

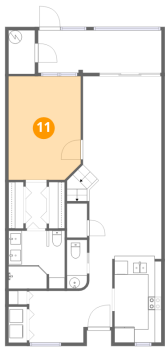
10 Floor 1 - Bath



Dimensions: 8'5" x 8'8"
Area: 72 sq. ft
Counted as living area: Yes

Heated: Yes
Finished: Yes
Enclosed: Yes
Contiguous: Yes
Permitted: Yes
Wet space: Yes
Addition: No
Conversion: No

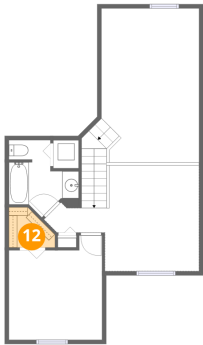
11 Floor 1 - Primary Bedroom



Dimensions: 10'9" x 15'6"
Area: 164 sq. ft
Counted as living area: Yes

Heated: Yes
Finished: Yes
Enclosed: Yes
Contiguous: Yes
Permitted: Yes
Wet space: No
Addition: No
Conversion: No

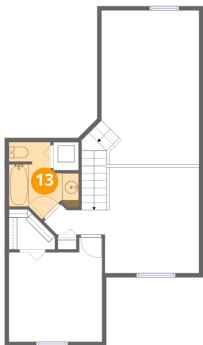
12 Floor 2 - W.I.C.



Dimensions: 5'6" x 4'10"
Area: 21 sq. ft
Counted as living area: Yes

Heated: Yes
Finished: Yes
Enclosed: Yes
Contiguous: Yes
Permitted: Yes
Wet space: No
Addition: No
Conversion: No

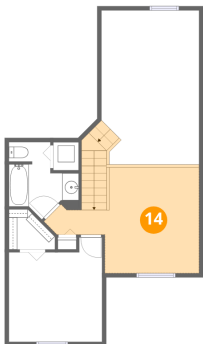
13 Floor 2 - Bath



Dimensions: 8'5" x 9'3"
Area: 53 sq. ft
Counted as living area: Yes

Heated: Yes
Finished: Yes
Enclosed: Yes
Contiguous: Yes
Permitted: Yes
Wet space: Yes
Addition: No
Conversion: No

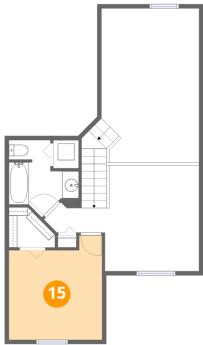
14 Floor 2 - Loft



Dimensions: 18'8" x 12'9"
Area: 200 sq. ft
Counted as living area: Yes

Heated: Yes
Finished: Yes
Enclosed: Yes
Contiguous: Yes
Permitted: Yes
Wet space: No
Addition: No
Conversion: No

15 Floor 2 - Bedroom



Dimensions: 11'2" x 12'6"
Area: 125 sq. ft
Counted as living area: Yes

Heated: Yes
Finished: Yes
Enclosed: Yes
Contiguous: Yes
Permitted: Yes
Wet space: No
Addition: No
Conversion: No

16 Floor 2 - Open To Below



Dimensions: 11'8" x 18'6"
Area: 211 sq. ft
Counted as living area: No

Heated: No
Finished: No
Enclosed: No
Contiguous: Yes
Permitted: No
Wet space: No
Addition: No
Conversion: No