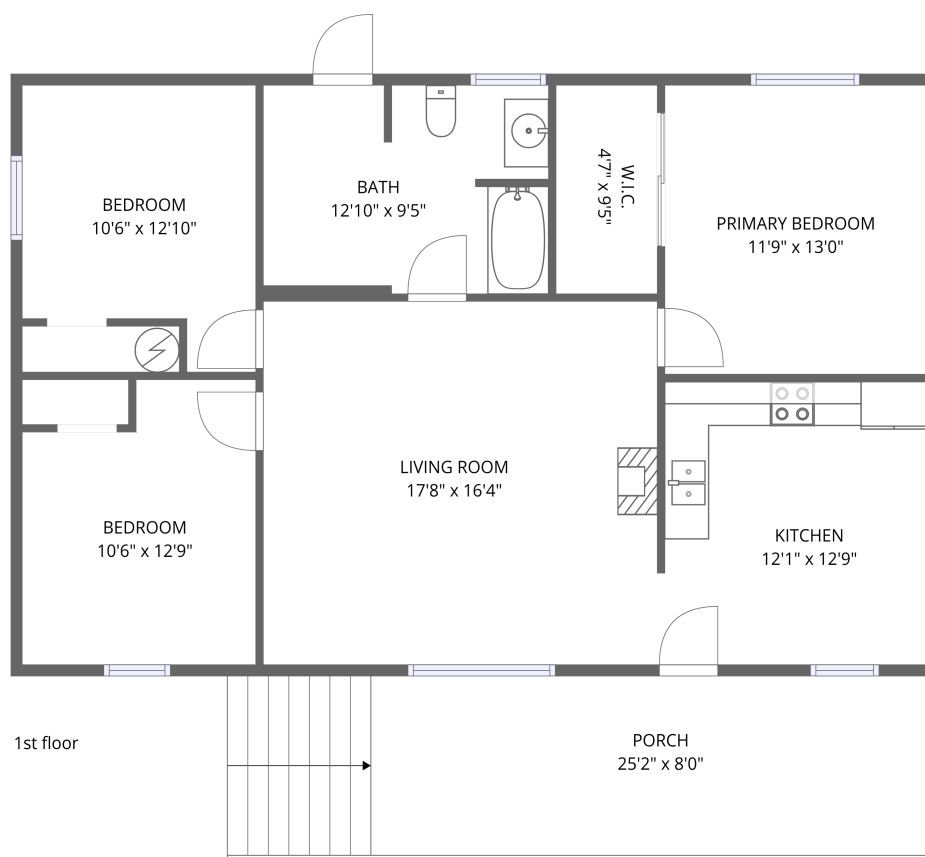


Home data report

152 Woodlawn Drive, Jamestown, Fentress County, Tennessee,
United States, 38556



Total Area: 1058 sq. ft

1st Floor: 1058 sq. ft

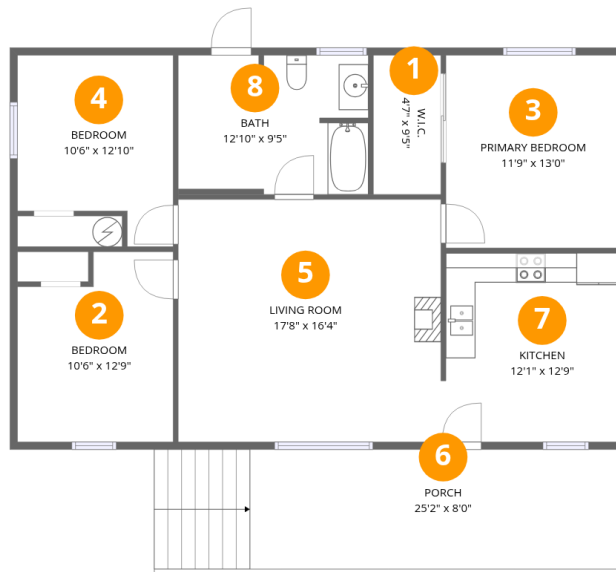
Excluded: Porch 255 sq. ft, Walls: 68 sq. ft

Property summary



Home data report

152 Woodlawn Drive, Jamestown, Fentress County, Tennessee,
United States, 38556



Room dimensions

Floor 1

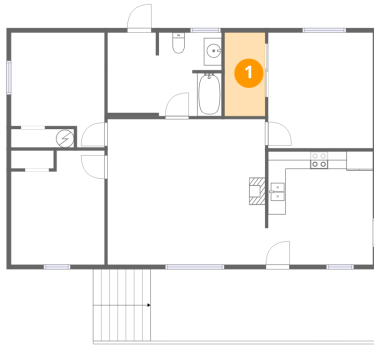
Total:1058sqft

Excluded: 255sqft

#		Dimensions	sqft	Counted as living area
1	W.I.C.	4'7" x 9'5"	43 sq. ft	Yes
2	Bedroom	10'6" x 12'9"	122 sq. ft	Yes
3	Primary Bedroom	11'9" x 13'0"	153 sq. ft	Yes
4	Bedroom	10'6" x 12'10"	118 sq. ft	Yes
5	Living Room	17'8" x 16'4"	289 sq. ft	Yes
6	Porch	25'2" x 8'0"	255 sq. ft	No
7	Kitchen	12'1" x 12'9"	151 sq. ft	Yes
8	Bath	12'10" x 9'5"	118 sq. ft	Yes

152 Woodlawn Drive, Jamestown, Fentress County, Tennessee,
United States, 38556

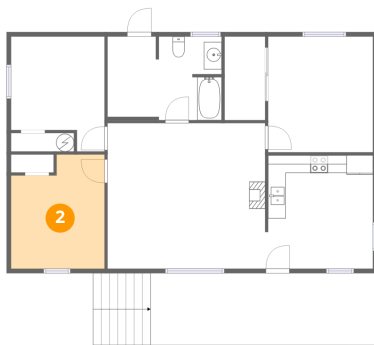
1 Floor 1 - W.I.C.



Dimensions: 4'7" x 9'5"
Area: 43 sq. ft
Counted as living area: Yes

Heated: Yes
Finished: Yes
Enclosed: Yes
Contiguous: Yes
Permitted: Yes
Wet space: No
Addition: No
Conversion: No

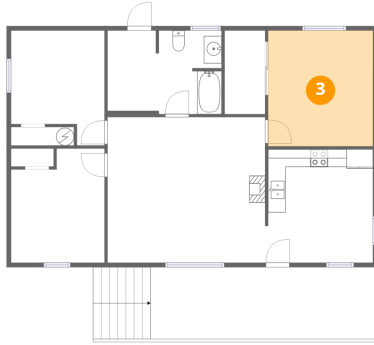
2 Floor 1 - Bedroom



Dimensions: 10'6" x 12'9"
Area: 122 sq. ft
Counted as living area: Yes

Heated: Yes
Finished: Yes
Enclosed: Yes
Contiguous: Yes
Permitted: Yes
Wet space: No
Addition: No
Conversion: No

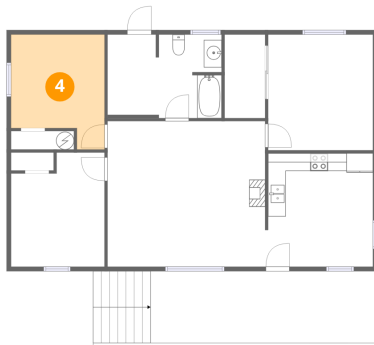
3 Floor 1 - Primary Bedroom



Dimensions: 11'9" x 13'0"
Area: 153 sq. ft
Counted as living area: Yes

Heated: Yes
Finished: Yes
Enclosed: Yes
Contiguous: Yes
Permitted: Yes
Wet space: No
Addition: No
Conversion: No

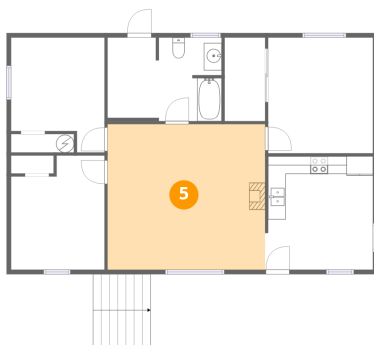
4 Floor 1 - Bedroom



Dimensions: 10'6" x 12'10"
Area: 118 sq. ft
Counted as living area: Yes

Heated: Yes
Finished: Yes
Enclosed: Yes
Contiguous: Yes
Permitted: Yes
Wet space: No
Addition: No
Conversion: No

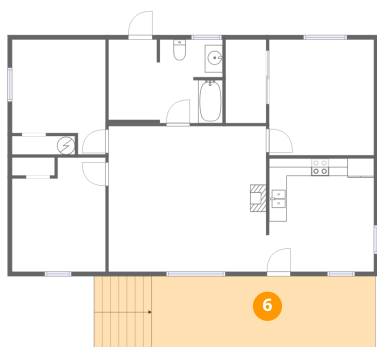
5 Floor 1 - Living Room



Dimensions: 17'8" x 16'4"
Area: 289 sq. ft
Counted as living area: Yes

Heated: Yes
Finished: Yes
Enclosed: Yes
Contiguous: Yes
Permitted: Yes
Wet space: No
Addition: No
Conversion: No

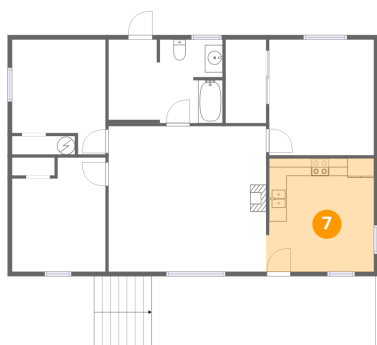
6 Floor 1 - Porch



Dimensions: 25'2" x 8'0"
Area: 255 sq. ft
Counted as living area: No

Heated: No
Finished: No
Enclosed: No
Contiguous: Yes
Permitted: Yes
Wet space: No
Addition: No
Conversion: No

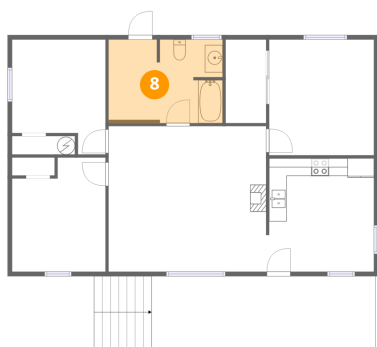
7 Floor 1 - Kitchen



Dimensions: 12'1" x 12'9"
Area: 151 sq. ft
Counted as living area: Yes

Heated: Yes
Finished: Yes
Enclosed: Yes
Contiguous: Yes
Permitted: Yes
Wet space: No
Addition: No
Conversion: No

8 Floor 1 - Bath



Dimensions: 12'10" x 9'5"
Area: 118 sq. ft
Counted as living area: Yes

Heated: Yes
Finished: Yes
Enclosed: Yes
Contiguous: Yes
Permitted: Yes
Wet space: Yes
Addition: No
Conversion: No