

Home data report

5868 Buckland Mill Road, Roanoke, Virginia 24019, United States



Total Area: 1736 sq. ft

1st Floor: 455 sq. ft, 2nd Floor: 1281 sq. ft

Excluded: Garage 658 sq. ft, Utility 93 sq. ft, Patio 215 sq. ft, Deck 316 sq. ft, Fireplace 16 sq. ft, Walls: 156 sq. ft

Property summary

 **2** Floors

 **3** Bedrooms

 **2** Bathrooms

Home data report

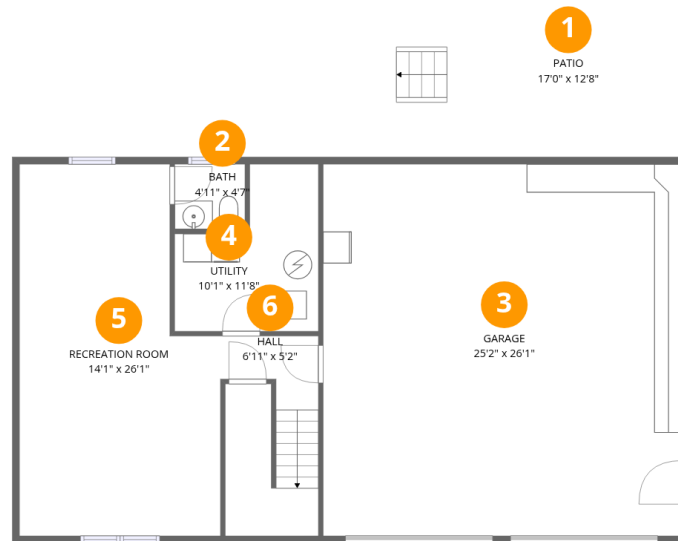
5868 Buckland Mill Road, Roanoke, Virginia 24019, United States

 **1**
Half baths

 **1**
Garages

Home data report

5868 Buckland Mill Road, Roanoke, Virginia 24019, United States



Room dimensions

Floor 1

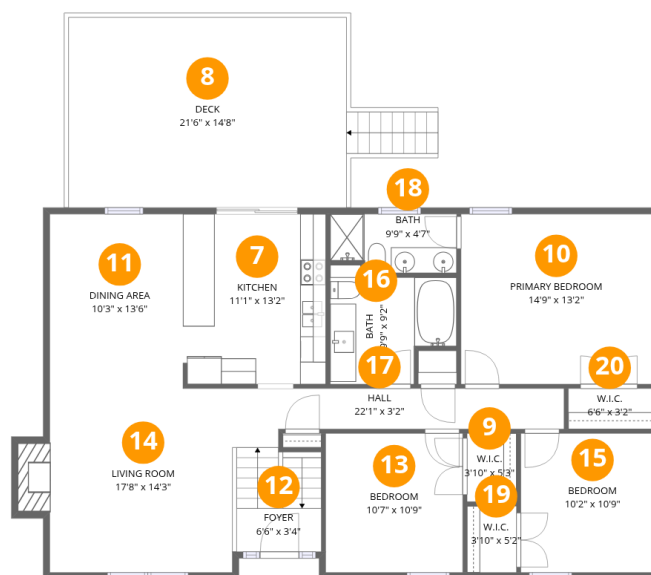
Total:455sqft

Excluded: 966sqft

#		Dimensions	sqft	Counted as living area
1	Patio	17'0" x 12'8"	215 sq. ft	No
2	Bath	4'11" x 4'7"	22 sq. ft	Yes
3	Garage	25'2" x 26'1"	657 sq. ft	No
4	Utility	10'1" x 11'8"	118 sq. ft	No
5	Recreation Room	14'1" x 26'1"	367 sq. ft	Yes
6	Hall	6'11" x 5'2"	36 sq. ft	Yes

Home data report

5868 Buckland Mill Road, Roanoke, Virginia 24019, United States



Room dimensions

Floor 2

Total:1281sqft

Excluded: 332sqft

#		Dimensions	sqft	Counted as living area
7	Kitchen	11'1" x 13'2"	145 sq. ft	Yes
8	Deck	21'6" x 14'8"	315 sq. ft	No
9	W.I.C.	3'10" x 5'3"	20 sq. ft	Yes
10	Primary Bedroom	14'9" x 13'2"	194 sq. ft	Yes
11	Dining Area	10'3" x 13'6"	138 sq. ft	Yes
12	Foyer	6'6" x 3'4"	22 sq. ft	Yes
13	Bedroom	10'7" x 10'9"	114 sq. ft	Yes
14	Living Room	17'8" x 14'3"	251 sq. ft	Yes
15	Bedroom	10'2" x 10'9"	109 sq. ft	Yes
16	Bath	9'9" x 9'2"	90 sq. ft	Yes
17	Hall	22'1" x 3'2"	69 sq. ft	Yes

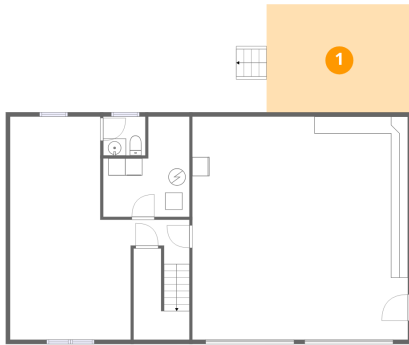
Home data report

5868 Buckland Mill Road, Roanoke, Virginia 24019, United States

#		Dimensions	sqft	Counted as living area
18	Bath	9'9" x 4'7"	45 sq. ft	Yes
19	W.I.C.	3'10" x 5'2"	20 sq. ft	Yes
20	W.I.C.	6'6" x 3'2"	20 sq. ft	Yes

5868 Buckland Mill Road, Roanoke, Virginia 24019, United States

1 Floor 1 - Patio



Dimensions: 17'0" x 12'8"
Area: 215 sq. ft
Counted as living area: No

Heated: No
Finished: No
Enclosed: No
Contiguous: Yes
Permitted: Yes
Wet space: No
Addition: No
Conversion: No

2 Floor 1 - Bath

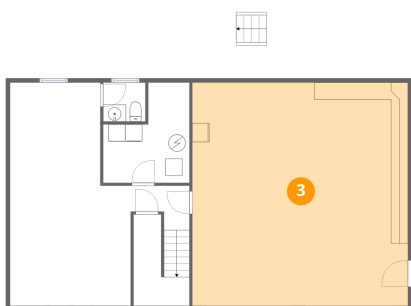


Dimensions: 4'11" x 4'7"
Area: 22 sq. ft
Counted as living area: Yes

Heated: Yes
Finished: Yes
Enclosed: Yes
Contiguous: Yes
Permitted: Yes
Wet space: No
Addition: No
Conversion: No

5868 Buckland Mill Road, Roanoke, Virginia 24019, United States

3 Floor 1 - Garage



Dimensions: 25'2" x 26'1"
Area: 657 sq. ft
Counted as living area: No

Heated: No
Finished: No
Enclosed: Yes
Contiguous: Yes
Permitted: Yes
Wet space: No
Addition: No
Conversion: No

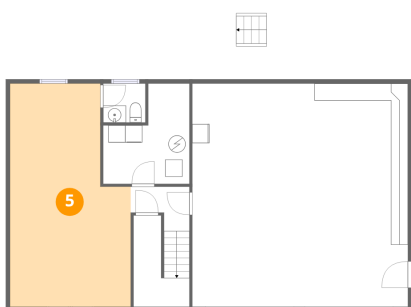
4 Floor 1 - Utility



Dimensions: 10'1" x 11'8"
Area: 118 sq. ft
Counted as living area: No

Heated: Yes
Finished: No
Enclosed: Yes
Contiguous: Yes
Permitted: Yes
Wet space: No
Addition: No
Conversion: No

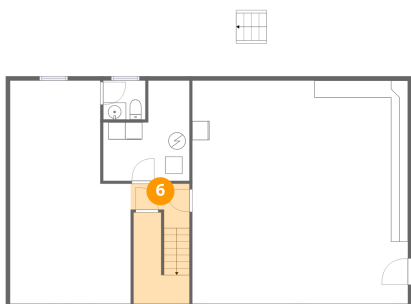
5 Floor 1 - Recreation Room



Dimensions: 14'1" x 26'1"
Area: 367 sq. ft
Counted as living area: Yes

Heated: Yes
Finished: Yes
Enclosed: Yes
Contiguous: Yes
Permitted: Yes
Wet space: No
Addition: No
Conversion: No

6 Floor 1 - Hall



Dimensions: 6'11" x 5'2"
Area: 36 sq. ft
Counted as living area: Yes

Heated: Yes
Finished: Yes
Enclosed: Yes
Contiguous: Yes
Permitted: Yes
Wet space: No
Addition: No
Conversion: No

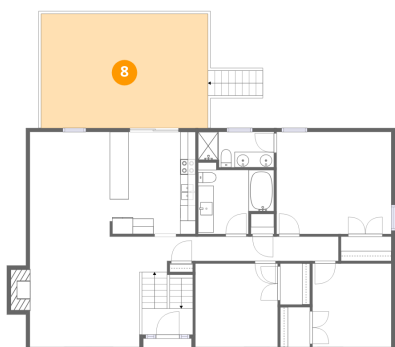
7 Floor 2 - Kitchen



Dimensions: 11'1" x 13'2"
Area: 145 sq. ft
Counted as living area: Yes

Heated: Yes
Finished: Yes
Enclosed: Yes
Contiguous: Yes
Permitted: Yes
Wet space: No
Addition: No
Conversion: No

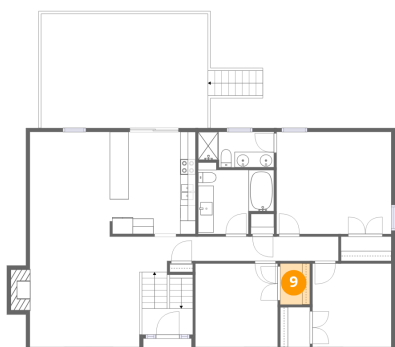
8 Floor 2 - Deck



Dimensions: 21'6" x 14'8"
Area: 315 sq. ft
Counted as living area: No

Heated: No
Finished: No
Enclosed: No
Contiguous: Yes
Permitted: Yes
Wet space: No
Addition: No
Conversion: No

9 Floor 2 - W.I.C.



Dimensions: 3'10" x 5'3"
Area: 20 sq. ft
Counted as living area: Yes

Heated: Yes
Finished: Yes
Enclosed: Yes
Contiguous: Yes
Permitted: Yes
Wet space: No
Addition: No
Conversion: No

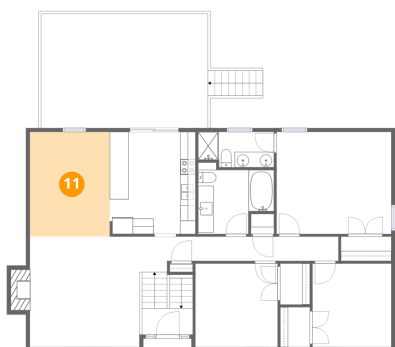
10 Floor 2 - Primary Bedroom



Dimensions: 14'9" x 13'2"
Area: 194 sq. ft
Counted as living area: Yes

Heated: Yes
Finished: Yes
Enclosed: Yes
Contiguous: Yes
Permitted: Yes
Wet space: No
Addition: No
Conversion: No

11 Floor 2 - Dining Area



Dimensions: 10'3" x 13'6"
Area: 138 sq. ft
Counted as living area: Yes

Heated: Yes
Finished: Yes
Enclosed: Yes
Contiguous: Yes
Permitted: Yes
Wet space: No
Addition: No
Conversion: No

12 Floor 2 - Foyer



Dimensions: 6'6" x 3'4"
Area: 22 sq. ft
Counted as living area: Yes

Heated: Yes
Finished: Yes
Enclosed: Yes
Contiguous: Yes
Permitted: Yes
Wet space: No
Addition: No
Conversion: No

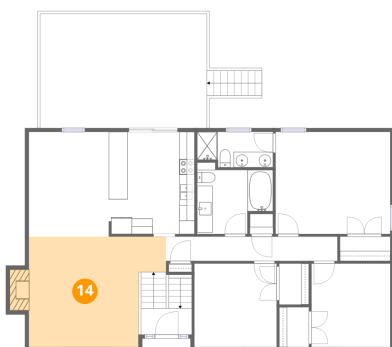
13 Floor 2 - Bedroom



Dimensions: 10'7" x 10'9"
Area: 114 sq. ft
Counted as living area: Yes

Heated: Yes
Finished: Yes
Enclosed: Yes
Contiguous: Yes
Permitted: Yes
Wet space: No
Addition: No
Conversion: No

14 Floor 2 - Living Room



Dimensions: 17'8" x 14'3"
Area: 251 sq. ft
Counted as living area: Yes

Heated: Yes
Finished: Yes
Enclosed: Yes
Contiguous: Yes
Permitted: Yes
Wet space: No
Addition: No
Conversion: No

15 Floor 2 - Bedroom



Dimensions: 10'2" x 10'9"
Area: 109 sq. ft
Counted as living area: Yes

Heated: Yes
Finished: Yes
Enclosed: Yes
Contiguous: Yes
Permitted: Yes
Wet space: No
Addition: No
Conversion: No

16 Floor 2 - Bath



Dimensions: 9'9" x 9'2"
Area: 90 sq. ft
Counted as living area: Yes

Heated: Yes
Finished: Yes
Enclosed: Yes
Contiguous: Yes
Permitted: Yes
Wet space: Yes
Addition: No
Conversion: No

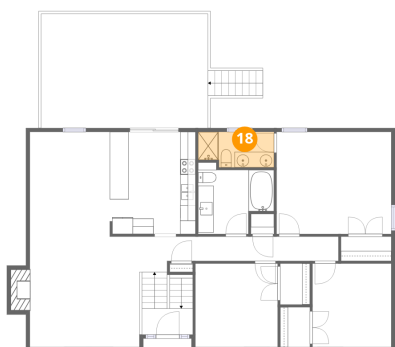
17 Floor 2 - Hall



Dimensions: 22'1" x 3'2"
Area: 69 sq. ft
Counted as living area: Yes

Heated: Yes
Finished: Yes
Enclosed: Yes
Contiguous: Yes
Permitted: Yes
Wet space: No
Addition: No
Conversion: No

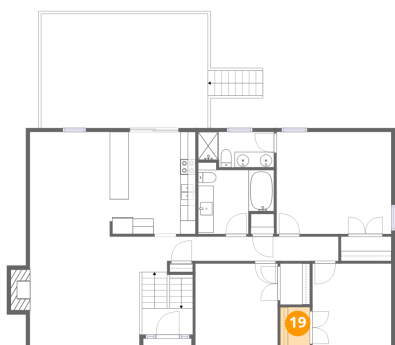
18 Floor 2 - Bath



Dimensions: 9'9" x 4'7"
Area: 45 sq. ft
Counted as living area: Yes

Heated: Yes
Finished: Yes
Enclosed: Yes
Contiguous: Yes
Permitted: Yes
Wet space: Yes
Addition: No
Conversion: No

19 Floor 2 - W.I.C.



Dimensions: 3'10" x 5'2"
Area: 20 sq. ft
Counted as living area: Yes

Heated: Yes
Finished: Yes
Enclosed: Yes
Contiguous: Yes
Permitted: Yes
Wet space: No
Addition: No
Conversion: No

20 Floor 2 - W.I.C.



Dimensions: 6'6" x 3'2"
Area: 20 sq. ft
Counted as living area: Yes

Heated: Yes
Finished: Yes
Enclosed: Yes
Contiguous: Yes
Permitted: Yes
Wet space: No
Addition: No
Conversion: No