

Home data report

419 Hilson Avenue, Westboro, Hampton Park, Ottawa, Ontario, Canada, K1Z 6B9, 417 Hilson Avenue



Total Area: 1673 sq. ft

Basement: 503 sq. ft, 1st Floor: 691 sq. ft, 2nd Floor: 479 sq. ft

Excluded: Utility 47 sq. ft, Low ceiling 18 sq. ft, Walls: 158 sq. ft

Property summary

 **3** Floors

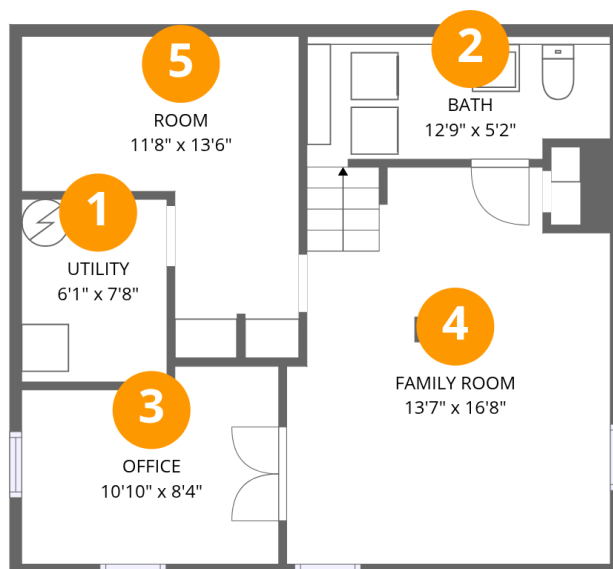
 **3** Bedrooms

 **1** Bathrooms

 **2** Half baths

Home data report

419 Hilson Avenue, Westboro, Hampton Park, Ottawa, Ontario, Canada, K1Z 6B9, 417 Hilson Avenue



Room dimensions

Floor 1 Below grade

Total:503sqft Excluded: 47sqft

#		Dimensions	sqft	Counted as living area
1	Utility	6'1" x 7'8"	47 sq. ft	No
2	Bath	12'9" x 5'2"	65 sq. ft	Yes
3	Office	10'10" x 8'4"	90 sq. ft	Yes
4	Family Room	13'7" x 16'8"	227 sq. ft	Yes
5	Room	11'8" x 13'6"	157 sq. ft	Yes

Home data report

419 Hilson Avenue, Westboro, Hampton Park, Ottawa, Ontario, Canada, K1Z 6B9, 417 Hilson Avenue



Room dimensions

Floor 2

Total:691sqft Excluded: 0sqft

#		Dimensions	sqft	Counted as living area
6	Dining Area	9'7" x 12'1"	117 sq. ft	Yes
7	Living Room	10'6" x 11'11"	125 sq. ft	Yes
8	Foyer	5'1" x 10'4"	53 sq. ft	Yes
9	Kitchen	10'6" x 12'8"	134 sq. ft	Yes
10	Hall	3'1" x 2'6"	8 sq. ft	Yes
11	Family Room	15'4" x 12'5"	191 sq. ft	Yes
12	Hall	5'8" x 8'1"	46 sq. ft	Yes
13	Bath	3'1" x 8'1"	25 sq. ft	Yes

Home data report

419 Hilson Avenue, Westboro, Hampton Park, Ottawa, Ontario, Canada, K1Z 6B9, 417 Hilson Avenue



Room dimensions

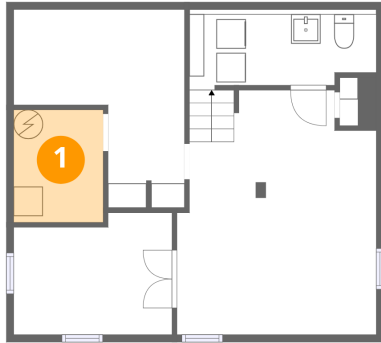
Floor 3

Total:479sqft Excluded: 18sqft

#		Dimensions	sqft	Counted as living area
14	Hall	8'4" x 11'5"	95 sq. ft	Yes
15	Bedroom	10'1" x 11'4"	114 sq. ft	Yes
16	Bedroom	11'8" x 7'9"	91 sq. ft	Yes
17	Bath	5'3" x 7'0"	37 sq. ft	Yes
18	Primary Bedroom	15'6" x 11'4"	176 sq. ft	Yes

419 Hilson Avenue, Westboro, Hampton Park, Ottawa, Ontario,
Canada, K1Z 6B9, 417 Hilson Avenue

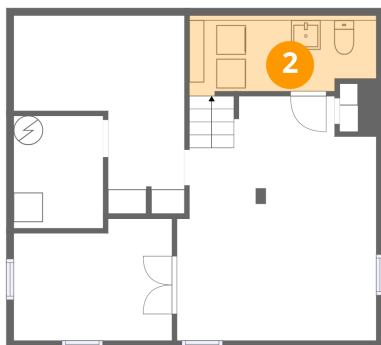
1 Floor 1 - Utility



Dimensions: 6'1" x 7'8"
Area: 47 sq. ft
Counted as living area: No

Heated: Yes
Finished: No
Enclosed: Yes
Contiguous: Yes
Permitted: Yes
Wet space: No
Addition: No
Conversion: No

2 Floor 1 - Bath

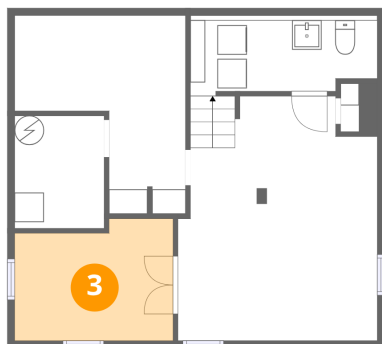


Dimensions: 12'9" x 5'2"
Area: 65 sq. ft
Counted as living area: Yes

Heated: Yes
Finished: Yes
Enclosed: Yes
Contiguous: Yes
Permitted: Yes
Wet space: No
Addition: No
Conversion: No

419 Hilson Avenue, Westboro, Hampton Park, Ottawa, Ontario, Canada, K1Z 6B9, 417 Hilson Avenue

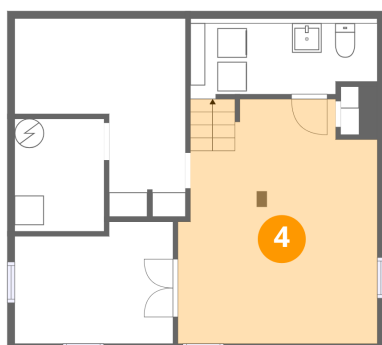
3 Floor 1 - Office



Dimensions: 10'10" x 8'4"
Area: 90 sq. ft
Counted as living area: Yes

Heated: Yes
Finished: Yes
Enclosed: Yes
Contiguous: Yes
Permitted: Yes
Wet space: No
Addition: No
Conversion: No

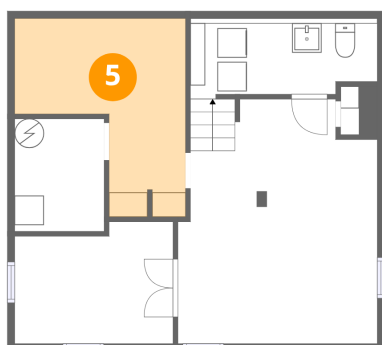
4 Floor 1 - Family Room



Dimensions: 13'7" x 16'8"
Area: 227 sq. ft
Counted as living area: Yes

Heated: Yes
Finished: Yes
Enclosed: Yes
Contiguous: Yes
Permitted: Yes
Wet space: No
Addition: No
Conversion: No

5 Floor 1 - Room



Dimensions: 11'8" x 13'6"
Area: 157 sq. ft
Counted as living area: Yes

Heated: Yes
Finished: Yes
Enclosed: Yes
Contiguous: Yes
Permitted: Yes
Wet space: No
Addition: No
Conversion: No

419 Hilson Avenue, Westboro, Hampton Park, Ottawa, Ontario, Canada, K1Z 6B9, 417 Hilson Avenue

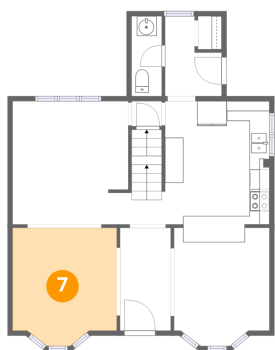
6 Floor 2 - Dining Area



Dimensions: 9'7" x 12'1"
Area: 117 sq. ft
Counted as living area: Yes

Heated: Yes
Finished: Yes
Enclosed: Yes
Contiguous: Yes
Permitted: Yes
Wet space: No
Addition: No
Conversion: No

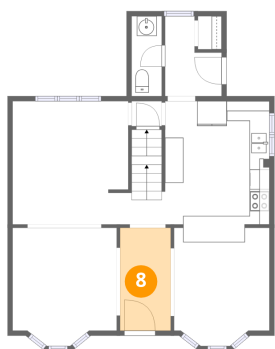
7 Floor 2 - Living Room



Dimensions: 10'6" x 11'11"
Area: 125 sq. ft
Counted as living area: Yes

Heated: Yes
Finished: Yes
Enclosed: Yes
Contiguous: Yes
Permitted: Yes
Wet space: No
Addition: No
Conversion: No

8 Floor 2 - Foyer

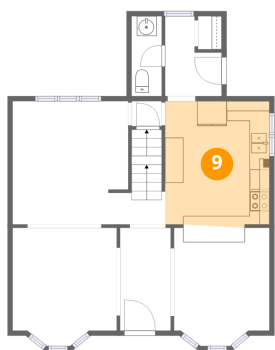


Dimensions: 5'1" x 10'4"
Area: 53 sq. ft
Counted as living area: Yes

Heated: Yes
Finished: Yes
Enclosed: Yes
Contiguous: Yes
Permitted: Yes
Wet space: No
Addition: No
Conversion: No

419 Hilson Avenue, Westboro, Hampton Park, Ottawa, Ontario, Canada, K1Z 6B9, 417 Hilson Avenue

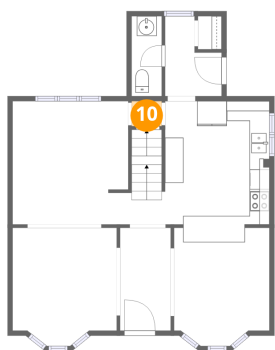
9 Floor 2 - Kitchen



Dimensions: 10'6" x 12'8"
Area: 134 sq. ft
Counted as living area: Yes

Heated: Yes
Finished: Yes
Enclosed: Yes
Contiguous: Yes
Permitted: Yes
Wet space: No
Addition: No
Conversion: No

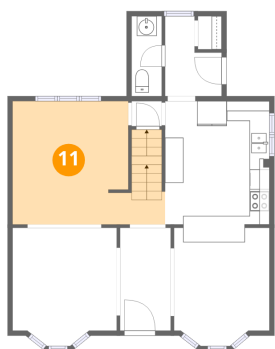
10 Floor 2 - Hall



Dimensions: 3'1" x 2'6"
Area: 8 sq. ft
Counted as living area: Yes

Heated: Yes
Finished: Yes
Enclosed: Yes
Contiguous: Yes
Permitted: Yes
Wet space: No
Addition: No
Conversion: No

11 Floor 2 - Family Room

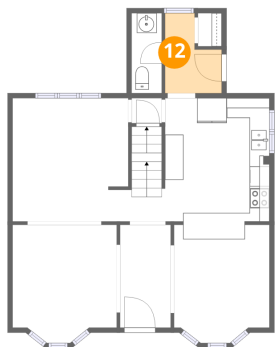


Dimensions: 15'4" x 12'5"
Area: 191 sq. ft
Counted as living area: Yes

Heated: Yes
Finished: Yes
Enclosed: Yes
Contiguous: Yes
Permitted: Yes
Wet space: No
Addition: No
Conversion: No

419 Hilson Avenue, Westboro, Hampton Park, Ottawa, Ontario, Canada, K1Z 6B9, 417 Hilson Avenue

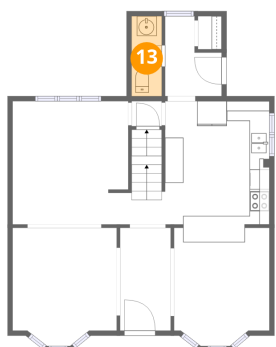
12 Floor 2 - Hall



Dimensions: 5'8" x 8'1"
Area: 46 sq. ft
Counted as living area: Yes

Heated: Yes
Finished: Yes
Enclosed: Yes
Contiguous: Yes
Permitted: Yes
Wet space: No
Addition: No
Conversion: No

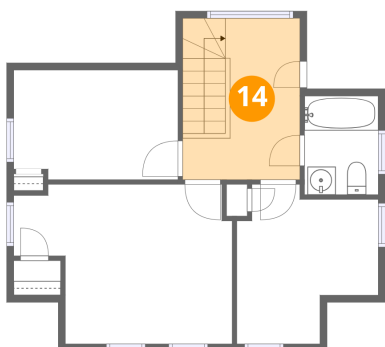
13 Floor 2 - Bath



Dimensions: 3'1" x 8'1"
Area: 25 sq. ft
Counted as living area: Yes

Heated: Yes
Finished: Yes
Enclosed: Yes
Contiguous: Yes
Permitted: Yes
Wet space: Yes
Addition: No
Conversion: No

14 Floor 3 - Hall

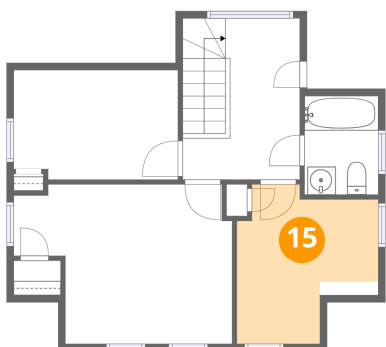


Dimensions: 8'4" x 11'5"
Area: 95 sq. ft
Counted as living area: Yes

Heated: Yes
Finished: Yes
Enclosed: Yes
Contiguous: Yes
Permitted: Yes
Wet space: No
Addition: No
Conversion: No

419 Hilson Avenue, Westboro, Hampton Park, Ottawa, Ontario, Canada, K1Z 6B9, 417 Hilson Avenue

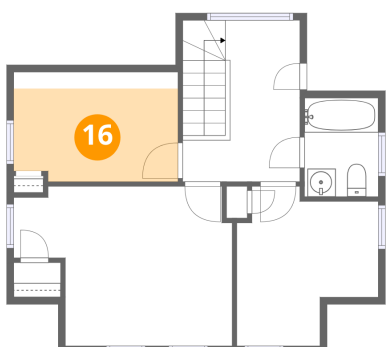
15 Floor 3 - Bedroom



Dimensions: 10'1" x 11'4"
Area: 114 sq. ft
Counted as living area: Yes

Heated: Yes
Finished: Yes
Enclosed: Yes
Contiguous: Yes
Permitted: Yes
Wet space: No
Addition: No
Conversion: No

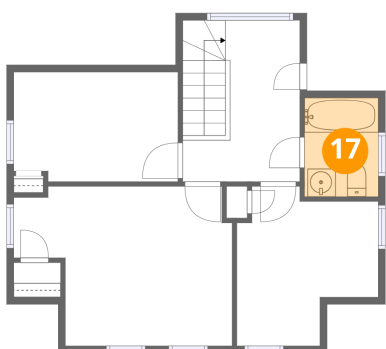
16 Floor 3 - Bedroom



Dimensions: 11'8" x 7'9"
Area: 91 sq. ft
Counted as living area: Yes

Heated: Yes
Finished: Yes
Enclosed: Yes
Contiguous: Yes
Permitted: Yes
Wet space: No
Addition: No
Conversion: No

17 Floor 3 - Bath

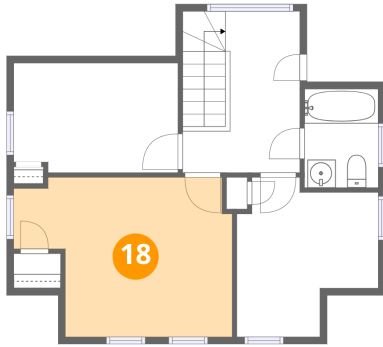


Dimensions: 5'3" x 7'0"
Area: 37 sq. ft
Counted as living area: Yes

Heated: Yes
Finished: Yes
Enclosed: Yes
Contiguous: Yes
Permitted: Yes
Wet space: Yes
Addition: No
Conversion: No

419 Hilson Avenue, Westboro, Hampton Park, Ottawa, Ontario,
Canada, K1Z 6B9, 417 Hilson Avenue

18 Floor 3 - Primary Bedroom



Dimensions: 15'6" x 11'4"
Area: 176 sq. ft
Counted as living area: Yes

Heated: Yes
Finished: Yes
Enclosed: Yes
Contiguous: Yes
Permitted: Yes
Wet space: No
Addition: No
Conversion: No