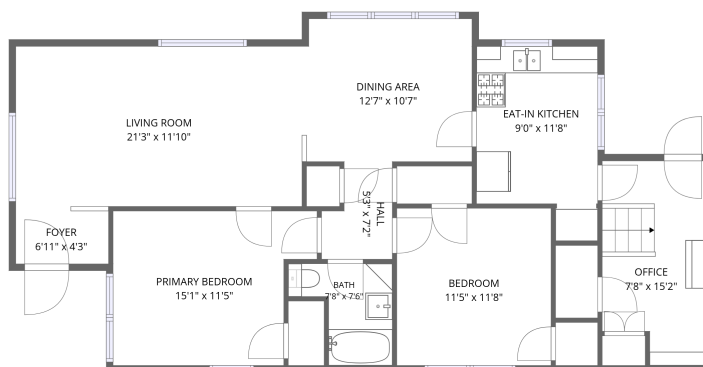
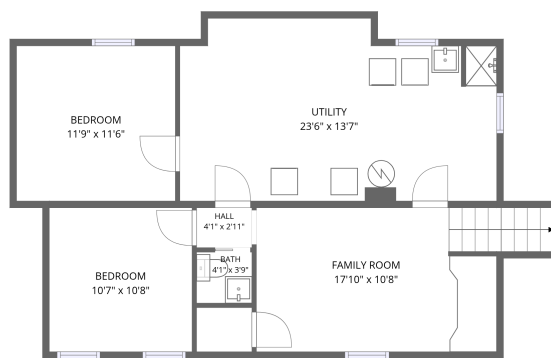


Home data report

1025 Kingsbury St, Belle Fourche, SD, US



1st floor



Basement

Total Area: 1635 sq. ft

Basement: 523 sq. ft, 1st Floor: 1112 sq. ft

Excluded: Utility 295 sq. ft, Walls: 144 sq. ft

Property summary





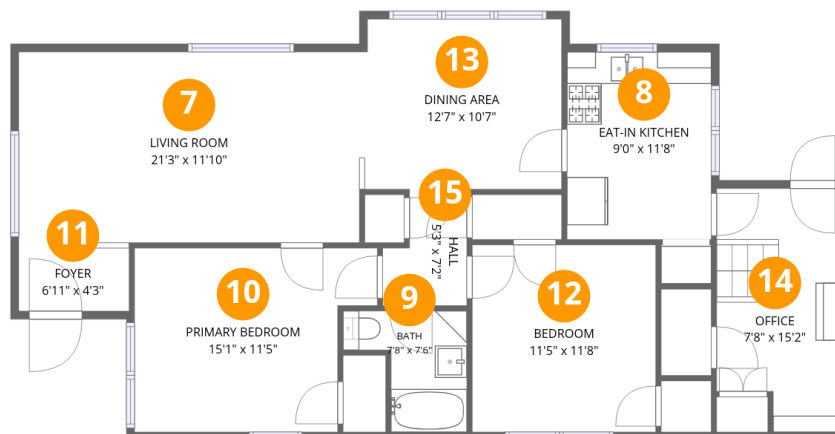
Room dimensions

Floor 1 Below grade

Total: 523sqft

Excluded: 295sqft

#		Dimensions	sqft	Counted as living area
1	Bedroom	10'7" x 10'8"	113 sq. ft	Yes
2	Family Room	17'10" x 10'8"	203 sq. ft	Yes
3	Utility	23'6" x 13'7"	294 sq. ft	No
4	Bath	4'1" x 3'9"	16 sq. ft	Yes
5	Bedroom	11'9" x 11'6"	135 sq. ft	Yes
6	Hall	4'1" x 2'11"	12 sq. ft	Yes



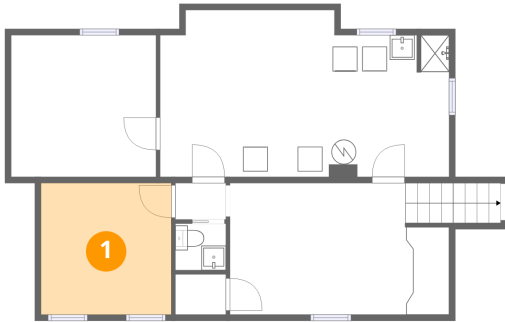
Room dimensions

Floor 2

Total: 1112 sqft Excluded: 0 sqft

#		Dimensions	sqft	Counted as living area
7	Living Room	21'3" x 11'10"	252 sq. ft	Yes
8	Eat-in Kitchen	9'0" x 11'8"	105 sq. ft	Yes
9	Bath	7'8" x 7'6"	43 sq. ft	Yes
10	Primary Bedroom	15'1" x 11'5"	154 sq. ft	Yes
11	Foyer	6'11" x 4'3"	29 sq. ft	Yes
12	Bedroom	11'5" x 11'8"	133 sq. ft	Yes
13	Dining Area	12'7" x 10'7"	132 sq. ft	Yes
14	Office	7'8" x 15'2"	107 sq. ft	Yes
15	Hall	5'3" x 7'2"	32 sq. ft	Yes

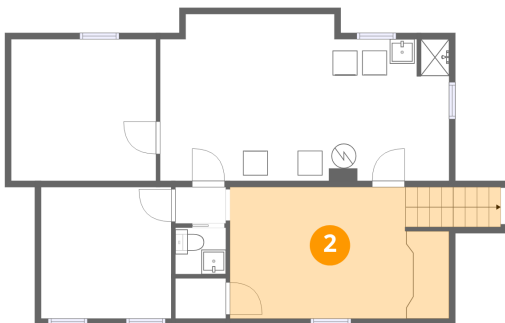
1 Floor 1 - Bedroom



Dimensions: 10'7" x 10'8"
Area: 113 sq. ft
Counted as living area: Yes

Heated: Yes
Finished: Yes
Enclosed: Yes
Contiguous: Yes
Permitted: Yes
Wet space: No
Addition: No
Conversion: No

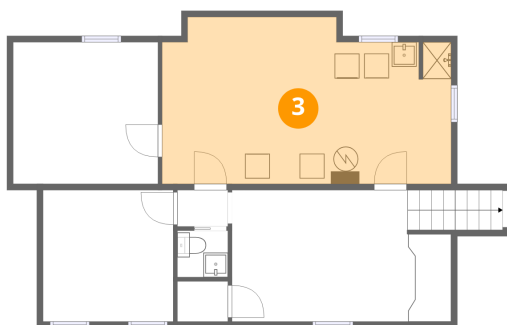
2 Floor 1 - Family Room



Dimensions: 17'10" x 10'8"
Area: 203 sq. ft
Counted as living area: Yes

Heated: Yes
Finished: Yes
Enclosed: Yes
Contiguous: Yes
Permitted: Yes
Wet space: No
Addition: No
Conversion: No

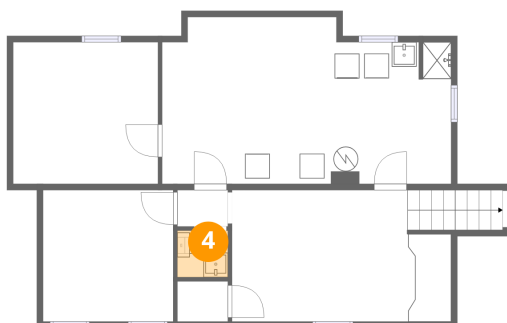
3 Floor 1 - Utility



Dimensions: 23'6" x 13'7"
Area: 294 sq. ft
Counted as living area: No

Heated: Yes
Finished: No
Enclosed: Yes
Contiguous: Yes
Permitted: Yes
Wet space: No
Addition: No
Conversion: No

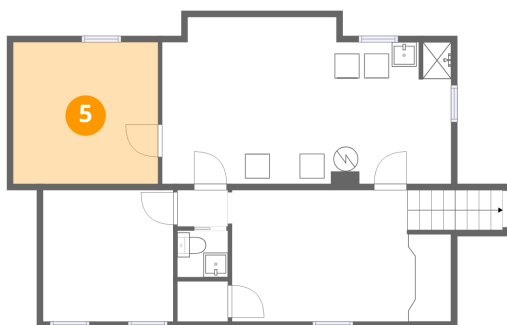
4 Floor 1 - Bath



Dimensions: 4'1" x 3'9"
Area: 16 sq. ft
Counted as living area: Yes

Heated: Yes
Finished: Yes
Enclosed: Yes
Contiguous: Yes
Permitted: Yes
Wet space: Yes
Addition: No
Conversion: No

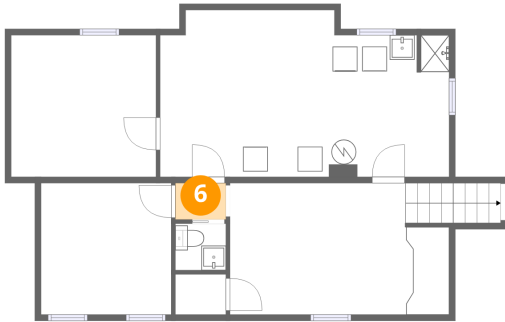
5 Floor 1 - Bedroom



Dimensions: 11'9" x 11'6"
Area: 135 sq. ft
Counted as living area: No

Heated: Yes
Finished: Yes
Enclosed: Yes
Contiguous: No
Permitted: Yes
Wet space: No
Addition: No
Conversion: No

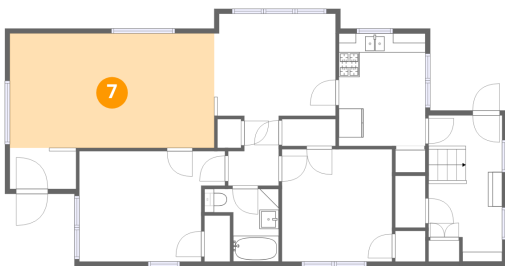
6 Floor 1 - Hall



Dimensions: 4'1" x 2'11"
Area: 12 sq. ft
Counted as living area: Yes

Heated: Yes
Finished: Yes
Enclosed: Yes
Contiguous: Yes
Permitted: Yes
Wet space: No
Addition: No
Conversion: No

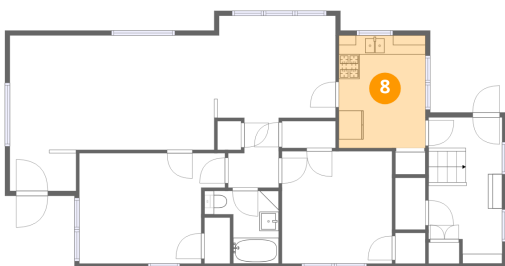
7 Floor 2 - Living Room



Dimensions: 21'3" x 11'10"
Area: 252 sq. ft
Counted as living area: Yes

Heated: Yes
Finished: Yes
Enclosed: Yes
Contiguous: Yes
Permitted: Yes
Wet space: No
Addition: No
Conversion: No

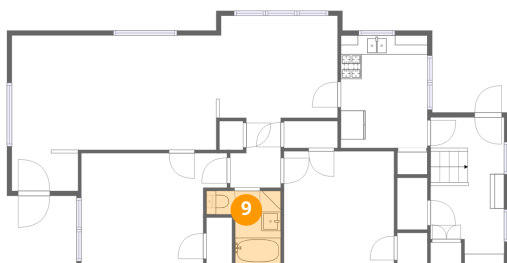
8 Floor 2 - Eat-in Kitchen



Dimensions: 9'0" x 11'8"
Area: 105 sq. ft
Counted as living area: Yes

Heated: Yes
Finished: Yes
Enclosed: Yes
Contiguous: Yes
Permitted: Yes
Wet space: No
Addition: No
Conversion: No

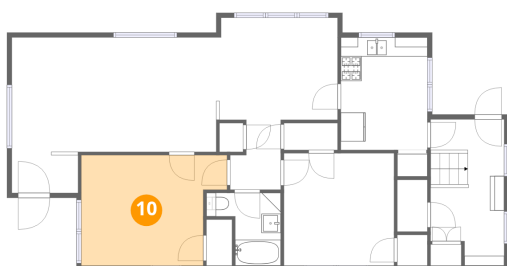
9 Floor 2 - Bath



Dimensions: 7'8" x 7'6"
Area: 43 sq. ft
Counted as living area: Yes

Heated: Yes
Finished: Yes
Enclosed: Yes
Contiguous: Yes
Permitted: Yes
Wet space: Yes
Addition: No
Conversion: No

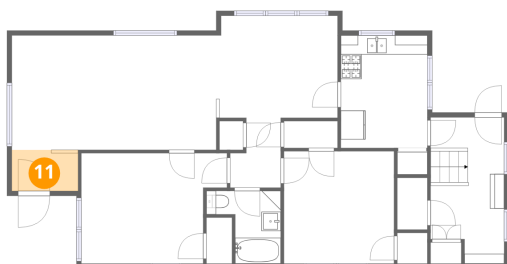
10 Floor 2 - Primary Bedroom



Dimensions: 15'1" x 11'5"
Area: 154 sq. ft
Counted as living area: Yes

Heated: Yes
Finished: Yes
Enclosed: Yes
Contiguous: Yes
Permitted: Yes
Wet space: No
Addition: No
Conversion: No

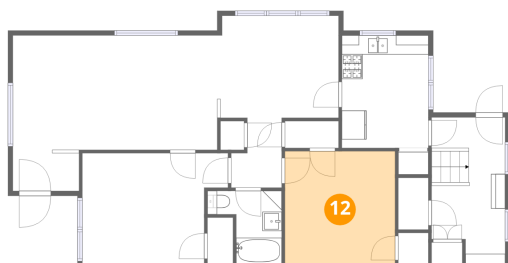
11 Floor 2 - Foyer



Dimensions: 6'11" x 4'3"
Area: 29 sq. ft
Counted as living area: Yes

Heated: Yes
Finished: Yes
Enclosed: Yes
Contiguous: Yes
Permitted: Yes
Wet space: No
Addition: No
Conversion: No

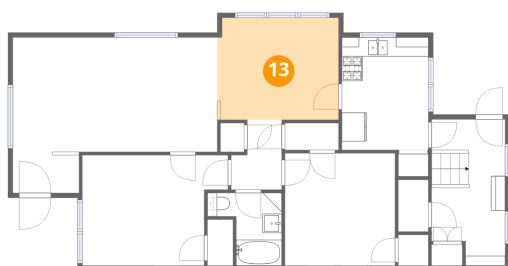
12 Floor 2 - Bedroom



Dimensions: 11'5" x 11'8"
Area: 133 sq. ft
Counted as living area: Yes

Heated: Yes
Finished: Yes
Enclosed: Yes
Contiguous: Yes
Permitted: Yes
Wet space: No
Addition: No
Conversion: No

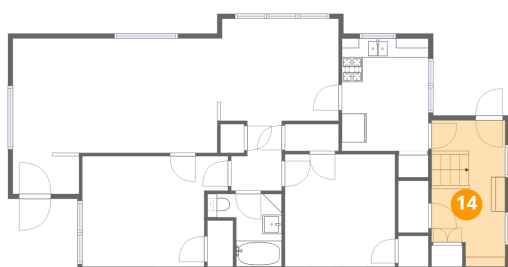
13 Floor 2 - Dining Area



Dimensions: 12'7" x 10'7"
Area: 132 sq. ft
Counted as living area: Yes

Heated: Yes
Finished: Yes
Enclosed: Yes
Contiguous: Yes
Permitted: Yes
Wet space: No
Addition: No
Conversion: No

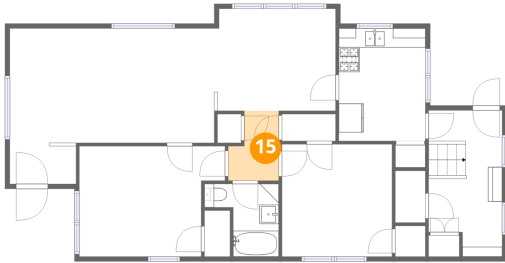
14 Floor 2 - Office



Dimensions: 7'8" x 15'2"
Area: 107 sq. ft
Counted as living area: Yes

Heated: Yes
Finished: Yes
Enclosed: Yes
Contiguous: Yes
Permitted: Yes
Wet space: No
Addition: No
Conversion: No

15 Floor 2 - Hall



Dimensions: 5'3" x 7'2"
Area: 32 sq. ft
Counted as living area: Yes

Heated: Yes
Finished: Yes
Enclosed: Yes
Contiguous: Yes
Permitted: Yes
Wet space: No
Addition: No
Conversion: No