

Home data report

2821 Lakeview Ave, St Joseph, MI, United States




Total Area: 1829 sq. ft

Basement: 617 sq. ft, 1st Floor: 1212 sq. ft

Excluded: Utility 595 sq. ft, Garage 447 sq. ft, Deck 386 sq. ft, Walls: 168 sq. ft

Property summary

 **2** Floors

 **3** Bedrooms

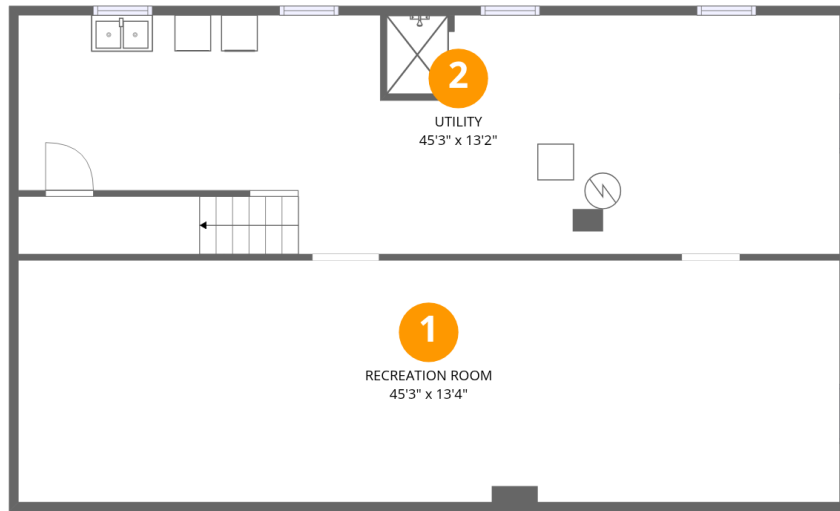
 **1** Bathrooms

Home data report

2821 Lakeview Ave, St Joseph, MI, United States

 **1**
Half baths

 **1**
Garages



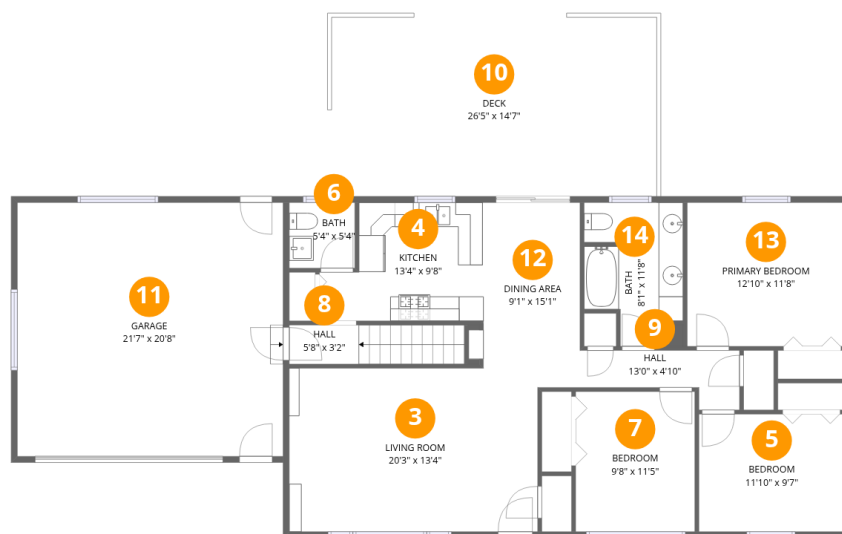
Room dimensions

Floor 1 Below grade

Total: 617 sqft

Excluded: 595 sqft

#		Dimensions	sqft	Counted as living area
1	Recreation Room	45'3" x 13'4"	602 sq. ft	Yes
2	Utility	45'3" x 13'2"	595 sq. ft	No



Room dimensions

Floor 2

Total: 1212sqft Excluded: 833sqft

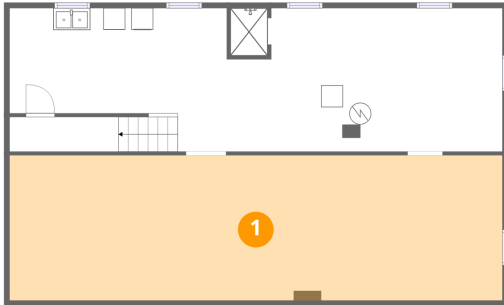
#		Dimensions	sqft	Counted as living area
3	Living Room	20'3" x 13'4"	269 sq. ft	Yes
4	Kitchen	13'4" x 9'8"	129 sq. ft	Yes
5	Bedroom	11'10" x 9'7"	114 sq. ft	Yes
6	Bath	5'4" x 5'4"	29 sq. ft	Yes
7	Bedroom	9'8" x 11'5"	111 sq. ft	Yes
8	Hall	5'8" x 3'2"	18 sq. ft	Yes
9	Hall	13'0" x 4'10"	63 sq. ft	Yes
10	Deck	26'5" x 14'7"	385 sq. ft	No
11	Garage	21'7" x 20'8"	447 sq. ft	No
12	Dining Area	9'1" x 15'1"	137 sq. ft	Yes
13	Primary Bedroom	12'10" x 11'8"	150 sq. ft	Yes

Home data report

2821 Lakeview Ave, St Joseph, MI, United States

#		Dimensions	sqft	Counted as living area
14	Bath	8'1" x 11'8"	94 sq. ft	Yes

1 Floor 1 - Recreation Room



Dimensions: 45'3" x 13'4"
Area: 602 sq. ft
Counted as living area: No

Heated: Yes
Finished: Yes
Enclosed: Yes
Contiguous: No
Permitted: Yes
Wet space: No
Addition: No
Conversion: No

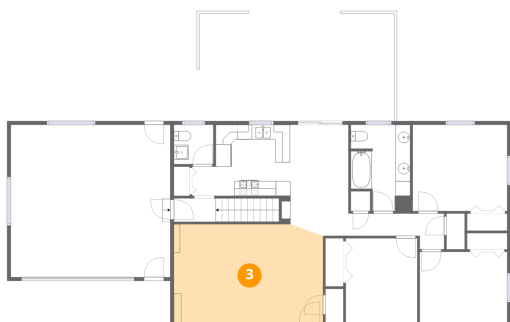
2 Floor 1 - Utility



Dimensions: 45'3" x 13'2"
Area: 595 sq. ft
Counted as living area: No

Heated: Yes
Finished: No
Enclosed: Yes
Contiguous: Yes
Permitted: Yes
Wet space: No
Addition: No
Conversion: No

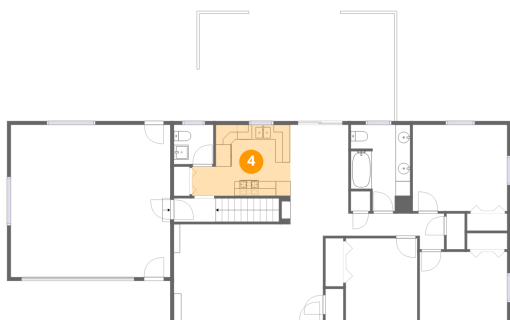
3 Floor 2 - Living Room



Dimensions: 20'3" x 13'4"
Area: 269 sq. ft
Counted as living area: Yes

Heated: Yes
Finished: Yes
Enclosed: Yes
Contiguous: Yes
Permitted: Yes
Wet space: No
Addition: No
Conversion: No

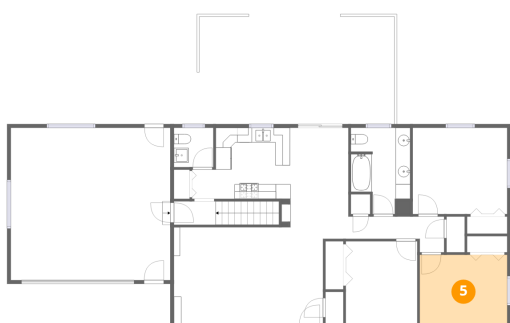
4 Floor 2 - Kitchen



Dimensions: 13'4" x 9'8"
Area: 129 sq. ft
Counted as living area: Yes

Heated: Yes
Finished: Yes
Enclosed: Yes
Contiguous: Yes
Permitted: Yes
Wet space: No
Addition: No
Conversion: No

5 Floor 2 - Bedroom



Dimensions: 11'10" x 9'7"
Area: 114 sq. ft
Counted as living area: Yes

Heated: Yes
Finished: Yes
Enclosed: Yes
Contiguous: Yes
Permitted: Yes
Wet space: No
Addition: No
Conversion: No

6 Floor 2 - Bath



Dimensions: 5'4" x 5'4"
Area: 29 sq. ft
Counted as living area: Yes

Heated: Yes
Finished: Yes
Enclosed: Yes
Contiguous: Yes
Permitted: Yes
Wet space: Yes
Addition: No
Conversion: No

7 Floor 2 - Bedroom



Dimensions: 9'8" x 11'5"
Area: 111 sq. ft
Counted as living area: Yes

Heated: Yes
Finished: Yes
Enclosed: Yes
Contiguous: Yes
Permitted: Yes
Wet space: No
Addition: No
Conversion: No

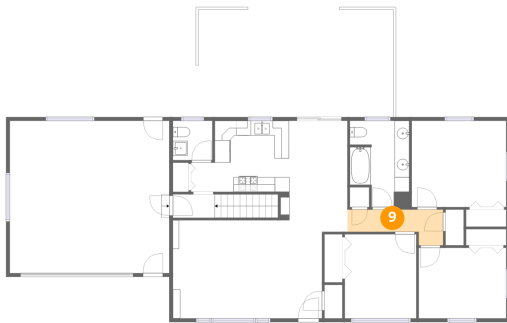
8 Floor 2 - Hall



Dimensions: 5'8" x 3'2"
Area: 18 sq. ft
Counted as living area: Yes

Heated: Yes
Finished: Yes
Enclosed: Yes
Contiguous: Yes
Permitted: Yes
Wet space: No
Addition: No
Conversion: No

9 Floor 2 - Hall



Dimensions: 13'0" x 4'10"
Area: 63 sq. ft
Counted as living area: Yes

Heated: Yes
Finished: Yes
Enclosed: Yes
Contiguous: Yes
Permitted: Yes
Wet space: No
Addition: No
Conversion: No

10 Floor 2 - Deck



Dimensions: 26'5" x 14'7"
Area: 385 sq. ft
Counted as living area: No

Heated: No
Finished: No
Enclosed: No
Contiguous: Yes
Permitted: Yes
Wet space: No
Addition: No
Conversion: No

11 Floor 2 - Garage



Dimensions: 21'7" x 20'8"
Area: 447 sq. ft
Counted as living area: No

Heated: No
Finished: No
Enclosed: Yes
Contiguous: Yes
Permitted: Yes
Wet space: No
Addition: No
Conversion: No

12 Floor 2 - Dining Area



Dimensions: 9'1" x 15'1"
Area: 137 sq. ft
Counted as living area: Yes

Heated: Yes
Finished: Yes
Enclosed: Yes
Contiguous: Yes
Permitted: Yes
Wet space: No
Addition: No
Conversion: No

13 Floor 2 - Primary Bedroom



Dimensions: 12'10" x 11'8"
Area: 150 sq. ft
Counted as living area: Yes

Heated: Yes
Finished: Yes
Enclosed: Yes
Contiguous: Yes
Permitted: Yes
Wet space: No
Addition: No
Conversion: No

14 Floor 2 - Bath



Dimensions: 8'1" x 11'8"
Area: 94 sq. ft
Counted as living area: Yes

Heated: Yes
Finished: Yes
Enclosed: Yes
Contiguous: Yes
Permitted: Yes
Wet space: Yes
Addition: No
Conversion: No