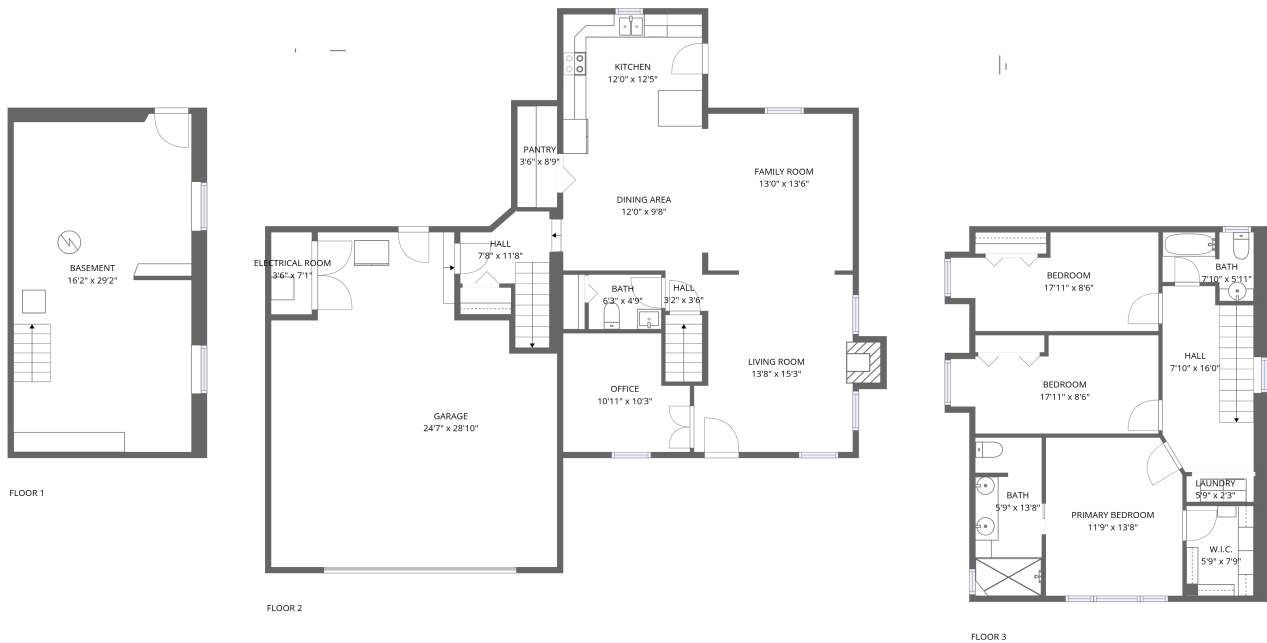


907 Ohio Avenue, St. Charles, Kane County, Illinois,
United States, 60174



Total Area: 1679 sq. ft

Below Ground: 0 sq. ft, Floor 2: 913 sq. ft, Floor 3: 766 sq. ft

Excluded: Basement 470 sq. ft, Garage 601 sq. ft, Undefined 57 sq. ft, Electrical room 25 sq. ft, Fireplace 11 sq. ft, Walls: 224 sq. ft

Property summary



**907 Ohio Avenue, St. Charles, Kane County, Illinois,
United States, 60174**

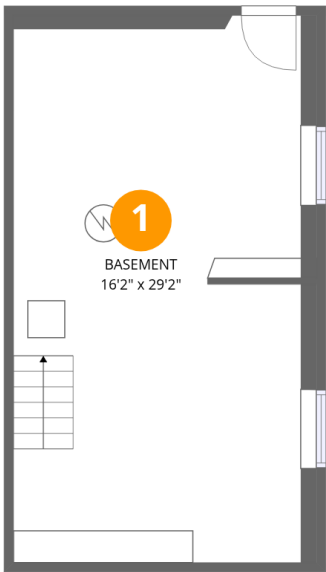


1
Half baths



1
Garages

907 Ohio Avenue, St. Charles, Kane County, Illinois,
United States, 60174

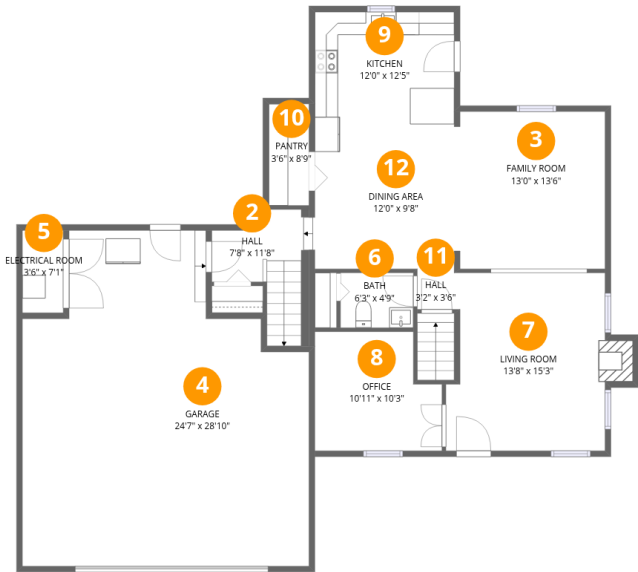


Room dimensions

Floor 1 Below grade Total:0sqft Excluded: 470sqft

#		Dimensions	sqft	Counted as living area
1	Basement	16'2" x 29'2"	468 sq. ft	No

907 Ohio Avenue, St. Charles, Kane County, Illinois,
United States, 60174

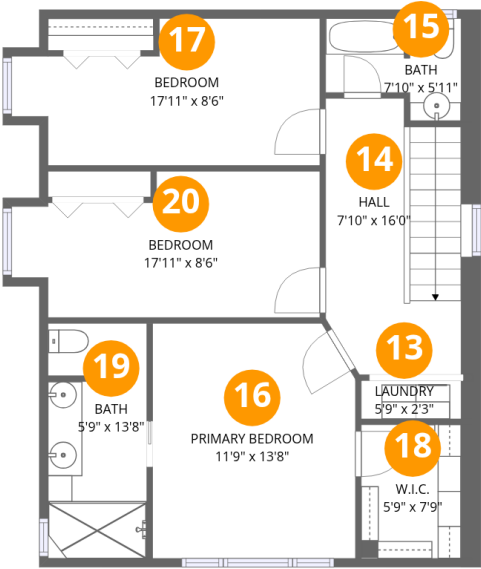


Room dimensions

Floor 2 Total:913sqft Excluded: 674sqft

#		Dimensions	sqft	Counted as living area
2	Hall	7'8" x 11'8"	67 sq. ft	Yes
3	Family Room	13'0" x 13'6"	176 sq. ft	Yes
4	Garage	24'7" x 28'10"	601 sq. ft	No
5	Electrical Room	3'6" x 7'1"	25 sq. ft	No
6	Bath	6'3" x 4'9"	30 sq. ft	Yes
7	Living Room	13'8" x 15'3"	207 sq. ft	Yes
8	Office	10'11" x 10'3"	101 sq. ft	Yes
9	Kitchen	12'0" x 12'5"	149 sq. ft	Yes
10	Pantry	3'6" x 8'9"	30 sq. ft	Yes
11	Hall	3'2" x 3'6"	11 sq. ft	Yes
12	Dining Area	12'0" x 9'8"	115 sq. ft	Yes

907 Ohio Avenue, St. Charles, Kane County, Illinois,
United States, 60174



Room dimensions

Floor 3

Total:766sqft Excluded: 20sqft

#		Dimensions	sqft	Counted as living area
13	Laundry	5'9" x 2'3"	14 sq. ft	Yes
14	Hall	7'10" x 16'0"	127 sq. ft	Yes
15	Bath	7'10" x 5'11"	42 sq. ft	Yes
16	Primary Bedroom	11'9" x 13'8"	157 sq. ft	Yes
17	Bedroom	17'11" x 8'6"	128 sq. ft	Yes
18	W.I.C.	5'9" x 7'9"	50 sq. ft	Yes
19	Bath	5'9" x 13'8"	77 sq. ft	Yes
20	Bedroom	17'11" x 8'6"	131 sq. ft	Yes

907 Ohio Avenue, St. Charles, Kane County, Illinois,
United States, 60174

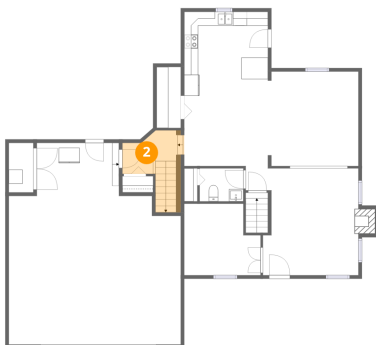
1 Floor 1 - Basement



Dimensions: 16'2" x 29'2"
Area: 468 sq. ft
Counted as living area: No

Heated: Yes
Finished: No
Enclosed: Yes
Contiguous: Yes
Permitted: Yes
Wet space: No
Addition: No
Conversion: No

2 Floor 2 - Hall

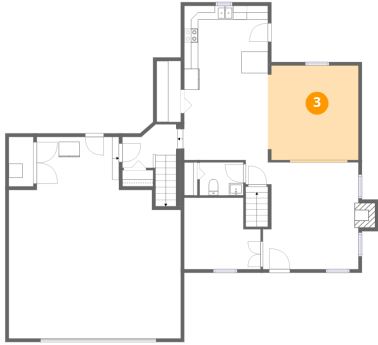


Dimensions: 7'8" x 11'8"
Area: 67 sq. ft
Counted as living area: Yes

Heated: Yes
Finished: Yes
Enclosed: Yes
Contiguous: Yes
Permitted: Yes
Wet space: No
Addition: No
Conversion: No

907 Ohio Avenue, St. Charles, Kane County, Illinois,
United States, 60174

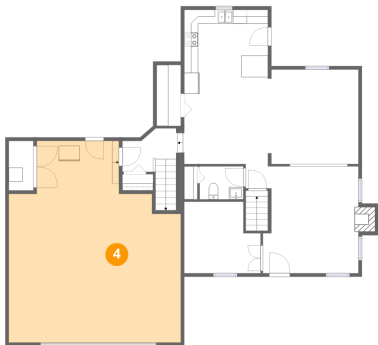
3 Floor 2 - Family Room



Dimensions: 13'0" x 13'6"
Area: 176 sq. ft
Counted as living area: Yes

Heated: Yes
Finished: Yes
Enclosed: Yes
Contiguous: Yes
Permitted: Yes
Wet space: No
Addition: No
Conversion: No

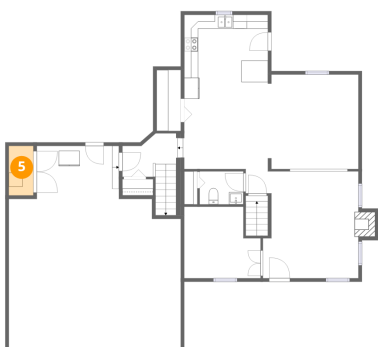
4 Floor 2 - Garage



Dimensions: 24'7" x 28'10"
Area: 601 sq. ft
Counted as living area: No

Heated: No
Finished: No
Enclosed: Yes
Contiguous: Yes
Permitted: Yes
Wet space: No
Addition: No
Conversion: No

5 Floor 2 - Electrical Room

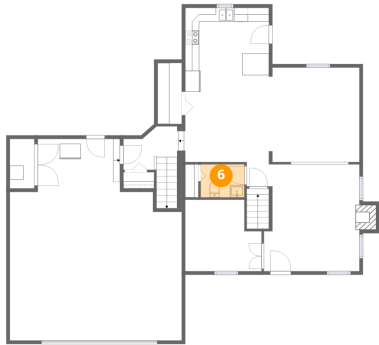


Dimensions: 3'6" x 7'1"
Area: 25 sq. ft
Counted as living area: No

Heated: No
Finished: No
Enclosed: Yes
Contiguous: Yes
Permitted: Yes
Wet space: No
Addition: No
Conversion: No

907 Ohio Avenue, St. Charles, Kane County, Illinois,
United States, 60174

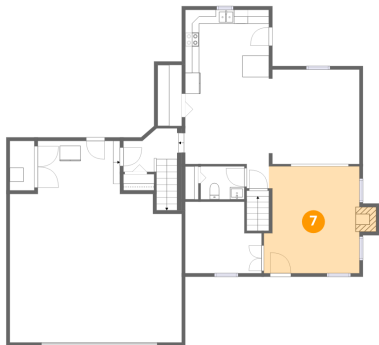
6 Floor 2 - Bath



Dimensions: 6'3" x 4'9"
Area: 30 sq. ft
Counted as living area: Yes

Heated: Yes
Finished: Yes
Enclosed: Yes
Contiguous: Yes
Permitted: Yes
Wet space: Yes
Addition: No
Conversion: No

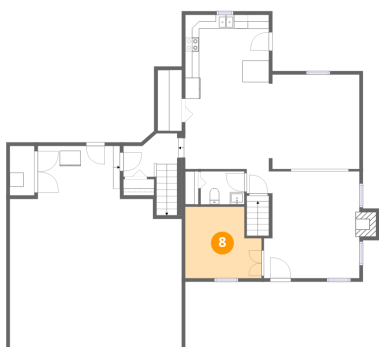
7 Floor 2 - Living Room



Dimensions: 13'8" x 15'3"
Area: 207 sq. ft
Counted as living area: Yes

Heated: Yes
Finished: Yes
Enclosed: Yes
Contiguous: Yes
Permitted: Yes
Wet space: No
Addition: No
Conversion: No

8 Floor 2 - Office

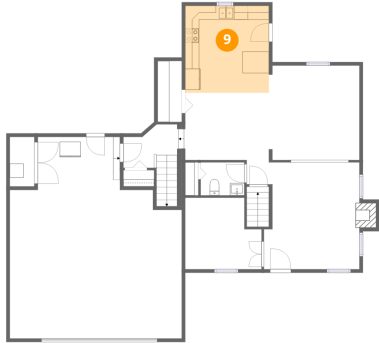


Dimensions: 10'11" x 10'3"
Area: 101 sq. ft
Counted as living area: Yes

Heated: Yes
Finished: Yes
Enclosed: Yes
Contiguous: Yes
Permitted: Yes
Wet space: No
Addition: No
Conversion: No

907 Ohio Avenue, St. Charles, Kane County, Illinois,
United States, 60174

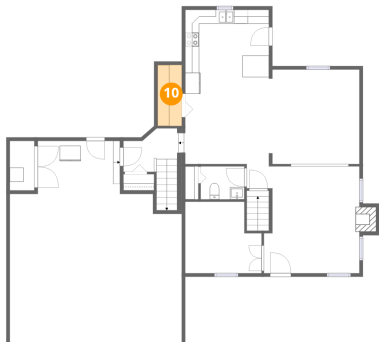
9 Floor 2 - Kitchen



Dimensions: 12'0" x 12'5"
Area: 149 sq. ft
Counted as living area: Yes

Heated: Yes
Finished: Yes
Enclosed: Yes
Contiguous: Yes
Permitted: Yes
Wet space: No
Addition: No
Conversion: No

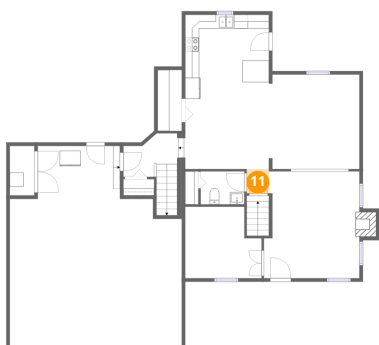
10 Floor 2 - Pantry



Dimensions: 3'6" x 8'9"
Area: 30 sq. ft
Counted as living area: Yes

Heated: Yes
Finished: Yes
Enclosed: Yes
Contiguous: Yes
Permitted: Yes
Wet space: No
Addition: No
Conversion: No

11 Floor 2 - Hall

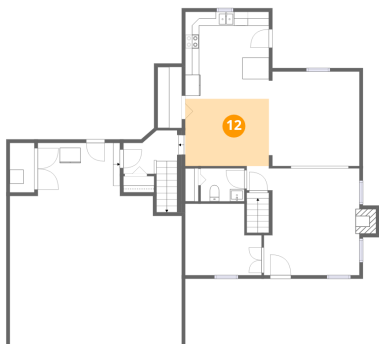


Dimensions: 3'2" x 3'6"
Area: 11 sq. ft
Counted as living area: Yes

Heated: Yes
Finished: Yes
Enclosed: Yes
Contiguous: Yes
Permitted: Yes
Wet space: No
Addition: No
Conversion: No

907 Ohio Avenue, St. Charles, Kane County, Illinois,
United States, 60174

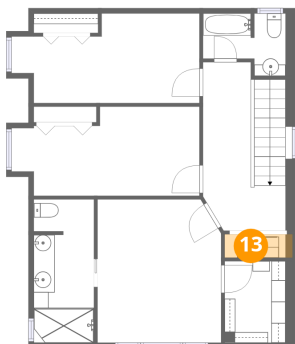
12 Floor 2 - Dining Area



Dimensions: 12'0" x 9'8"
Area: 115 sq. ft
Counted as living area: Yes

Heated: Yes
Finished: Yes
Enclosed: Yes
Contiguous: Yes
Permitted: Yes
Wet space: No
Addition: No
Conversion: No

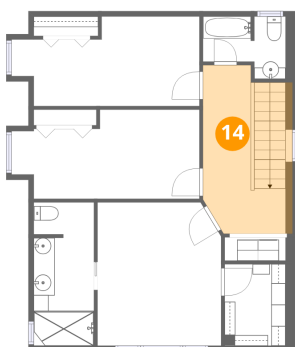
13 Floor 3 - Laundry



Dimensions: 5'9" x 2'3"
Area: 14 sq. ft
Counted as living area: Yes

Heated: Yes
Finished: Yes
Enclosed: Yes
Contiguous: Yes
Permitted: Yes
Wet space: No
Addition: No
Conversion: No

14 Floor 3 - Hall

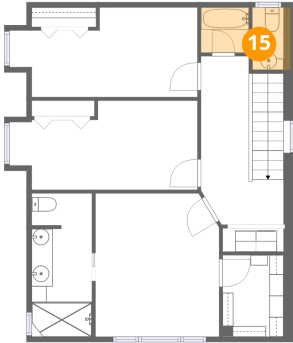


Dimensions: 7'10" x 16'0"
Area: 127 sq. ft
Counted as living area: Yes

Heated: Yes
Finished: Yes
Enclosed: Yes
Contiguous: Yes
Permitted: Yes
Wet space: No
Addition: No
Conversion: No

907 Ohio Avenue, St. Charles, Kane County, Illinois,
United States, 60174

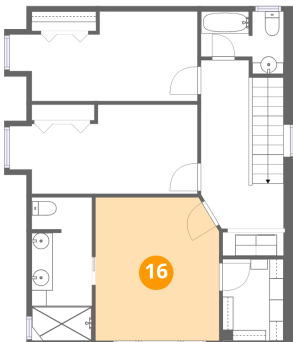
15 Floor 3 - Bath



Dimensions: 7'10" x 5'11"
Area: 42 sq. ft
Counted as living area: Yes

Heated: Yes
Finished: Yes
Enclosed: Yes
Contiguous: Yes
Permitted: Yes
Wet space: Yes
Addition: No
Conversion: No

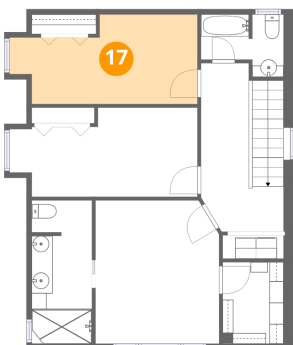
16 Floor 3 - Primary Bedroom



Dimensions: 11'9" x 13'8"
Area: 157 sq. ft
Counted as living area: Yes

Heated: Yes
Finished: Yes
Enclosed: Yes
Contiguous: Yes
Permitted: Yes
Wet space: No
Addition: No
Conversion: No

17 Floor 3 - Bedroom

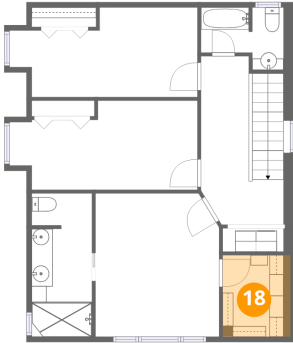


Dimensions: 17'11" x 8'6"
Area: 128 sq. ft
Counted as living area: Yes

Heated: Yes
Finished: Yes
Enclosed: Yes
Contiguous: Yes
Permitted: Yes
Wet space: No
Addition: No
Conversion: No

907 Ohio Avenue, St. Charles, Kane County, Illinois,
United States, 60174

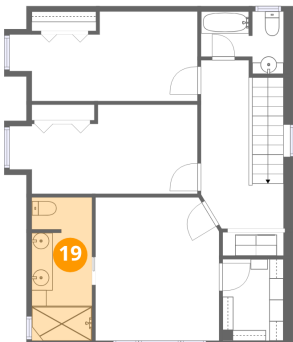
18 Floor 3 - W.I.C.



Dimensions: 5'9" x 7'9"
Area: 50 sq. ft
Counted as living area: Yes

Heated: Yes
Finished: Yes
Enclosed: Yes
Contiguous: Yes
Permitted: Yes
Wet space: No
Addition: No
Conversion: No

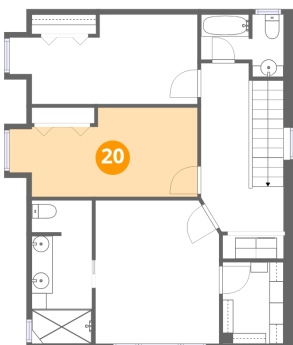
19 Floor 3 - Bath



Dimensions: 5'9" x 13'8"
Area: 77 sq. ft
Counted as living area: Yes

Heated: Yes
Finished: Yes
Enclosed: Yes
Contiguous: Yes
Permitted: Yes
Wet space: Yes
Addition: No
Conversion: No

20 Floor 3 - Bedroom



Dimensions: 17'11" x 8'6"
Area: 131 sq. ft
Counted as living area: Yes

Heated: Yes
Finished: Yes
Enclosed: Yes
Contiguous: Yes
Permitted: Yes
Wet space: No
Addition: No
Conversion: No