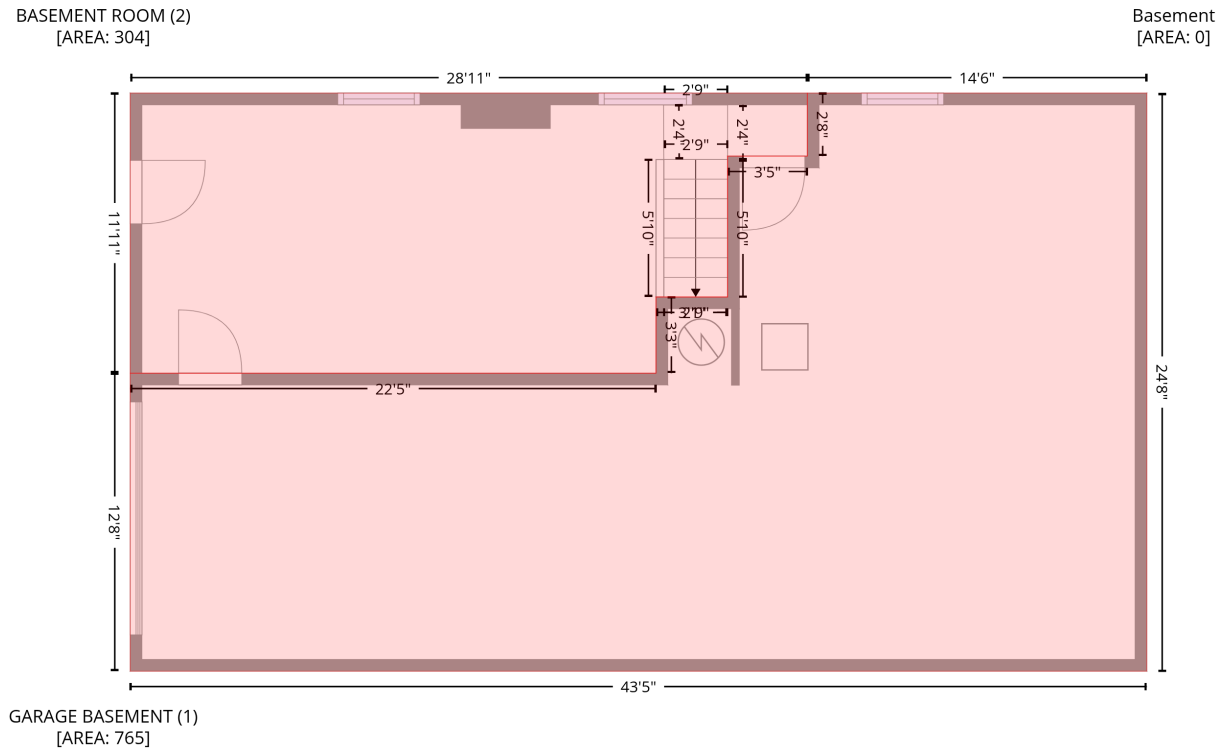


# 113 Jenny Ln, Pilot Mountain, NC, US

Gross Living Area: 1069 sq. ft

## Level 1 - Below Grade



Space	Area (sq. ft)	Calculation <small>Coordinate Polygon Area Algorithm using inches</small>
GARAGE BASEMENT (Non-living area)	765	$-\left((460.7 + 460.7) * (211.5 - 507.3) + (460.7 + -59.8) * (507.3 - 507.3) + (-59.8 + -59.8) * (507.3 - 354.8) + (-59.8 + 209.4) * (354.8 - 354.8) + (209.4 + 209.4) * (354.8 - 315.8) + (209.4 + 246.1) * (315.8 - 315.8) + (246.1 + 246.1) * (315.8 - 243.8) + (246.1 + 286.9) * (243.8 - 243.8) + (286.9 + 286.9) * (243.8 - 211.5) + (286.9 + 460.7) * (211.5 - 211.5)\right) * 0.5 + 0.00694$
BASEMENT ROOM (Non-living area)	304	$-\left((286.9 + 286.9) * (211.5 - 243.8) + (286.9 + 246.1) * (243.8 - 243.8) + (246.1 + 246.1) * (243.8 - 315.8) + (246.1 + 209.4) * (315.8 - 315.8) + (209.4 + 209.4) * (315.8 - 354.8) + (209.4 + -59.8) * (354.8 - 354.8) + (-59.8 + -59.8) * (354.8 - 211.5) + (-59.8 + 286.9) * (211.5 - 211.5)\right) * 0.5 + 0.00694$

# 113 Jenny Ln, Pilot Mountain, NC, US

Gross Living Area: 1069 sq. ft

## Level 2

1st floor  
[AREA: 1069]



Space	Area (sq. ft)	Calculation <small>Coordinate Polygon Area Algorithm using inches</small>
1st floor (Living area)	1069	$-((460.7 + 460.7) * (211.5 - 507.3) + (460.7 + -59.8) * (507.3 - 507.3) + (-59.8 + -59.8) * (507.3 - 211.5) + (-59.8 + 460.7) * (211.5 - 211.5)) * 0.5 * 0.00694$
PORCH (Non-living area)	36	$-((323.6 + 323.6) * (507.3 - 554.5) + (323.6 + 313.3) * (554.5 - 554.5) + (313.3 + 313.3) * (554.5 - 592.9) + (313.3 + 263.5) * (592.9 - 592.9) + (263.5 + 263.5) * (592.9 - 554.5) + (263.5 + 255.4) * (554.5 - 554.5) + (255.4 + 255.4) * (554.5 - 507.3) + (255.4 + 323.6) * (507.3 - 507.3)) * 0.5 * 0.00694$
PATIO (Non-living area)	21	$-((539.5 + 539.5) * (319.3 - 356.8) + (539.5 + 460.7) * (356.8 - 356.8) + (460.7 + 460.7) * (356.8 - 319.3) + (460.7 + 539.5) * (319.3 - 319.3)) * 0.5 * 0.00694$