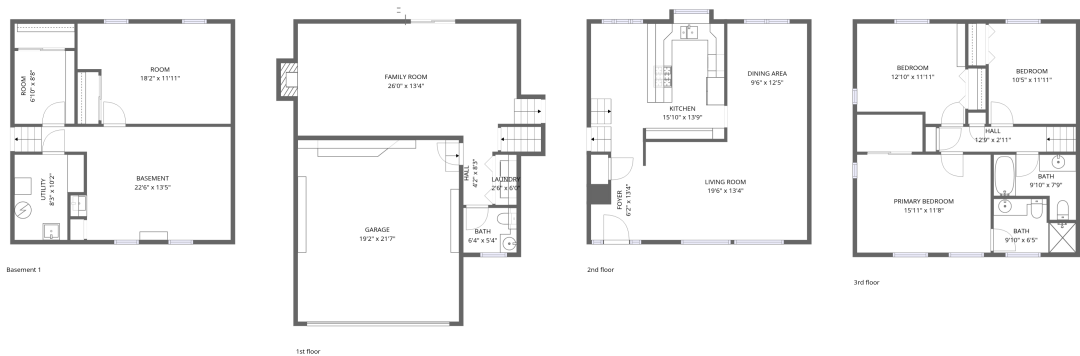


Home data report

12558 West Maryland Drive, Green Mountain, Lakewood,
Jefferson County, Colorado, United States, 80228

|



Total Area: 1828 sq. ft

Basement 1: 0 sq. ft, 1st Floor: 456 sq. ft, 2nd Floor: 662 sq. ft, 3rd Floor: 710 sq. ft
Excluded: Basement 282 sq. ft, Utility 73 sq. ft, Room 271 sq. ft, Undefined 36 sq. ft,
Garage 415 sq. ft, Fireplace 10 sq. ft, Embeddedwindow 6 sq. ft, Walls: 237 sq. ft

Property summary

 4 Floors

 3 Bedrooms

 2 Bathrooms

Home data report

**12558 West Maryland Drive, Green Mountain, Lakewood,
Jefferson County, Colorado, United States, 80228**

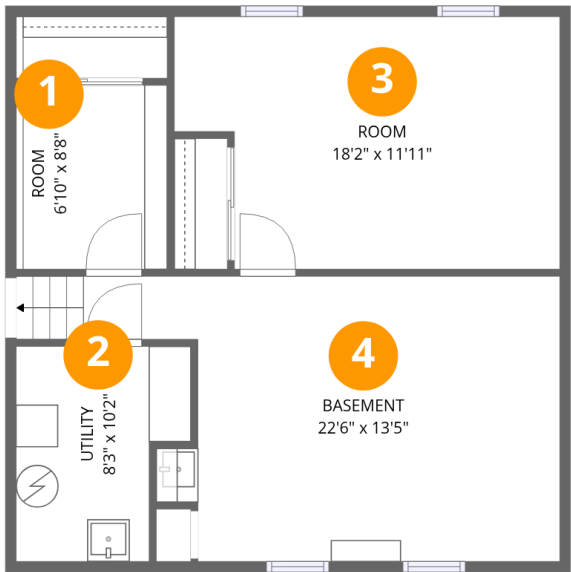


1
Half baths



1
Garages

12558 West Maryland Drive, Green Mountain, Lakewood,
Jefferson County, Colorado, United States, 80228

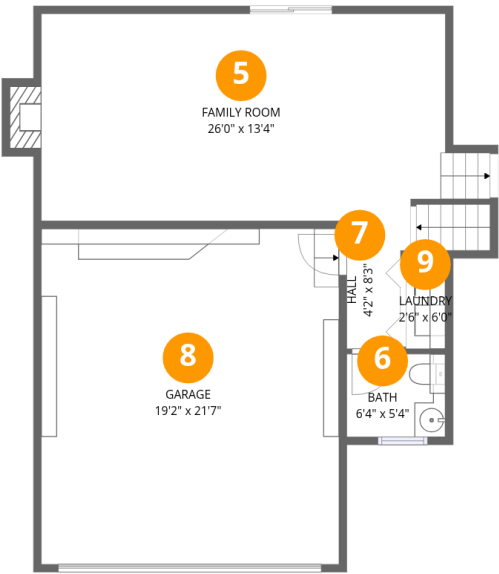


Room dimensions

Floor 1 Below grade Total:0sqft Excluded: 662sqft

#		Dimensions	sqft	Counted as living area
1	Room	6'10" x 8'8"	59 sq. ft	No
2	Utility	8'3" x 10'2"	84 sq. ft	No
3	Room	18'2" x 11'11"	217 sq. ft	No
4	Basement	22'6" x 13'5"	302 sq. ft	No

12558 West Maryland Drive, Green Mountain, Lakewood,
Jefferson County, Colorado, United States, 80228



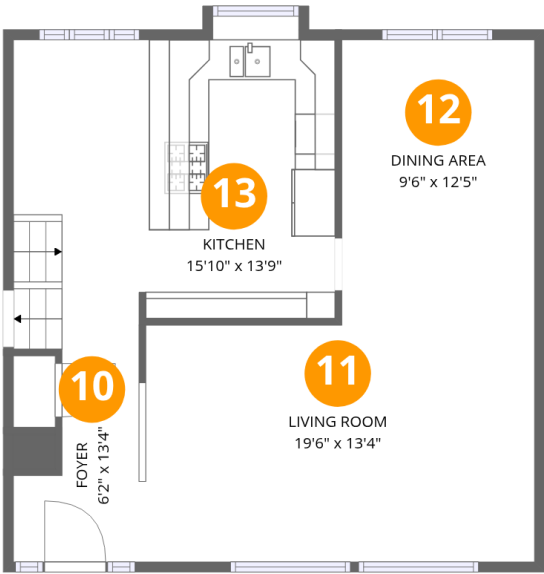
Room dimensions

Floor 2 Total:456sqft Excluded: 425sqft

#		Dimensions	sqft	Counted as living area
5	Family Room	26'0" x 13'4"	347 sq. ft	Yes
6	Bath	6'4" x 5'4"	34 sq. ft	Yes
7	Hall	4'2" x 8'3"	34 sq. ft	Yes
8	Garage	19'2" x 21'7"	415 sq. ft	No
9	Laundry	2'6" x 6'0"	15 sq. ft	Yes

Home data report

12558 West Maryland Drive, Green Mountain, Lakewood,
Jefferson County, Colorado, United States, 80228

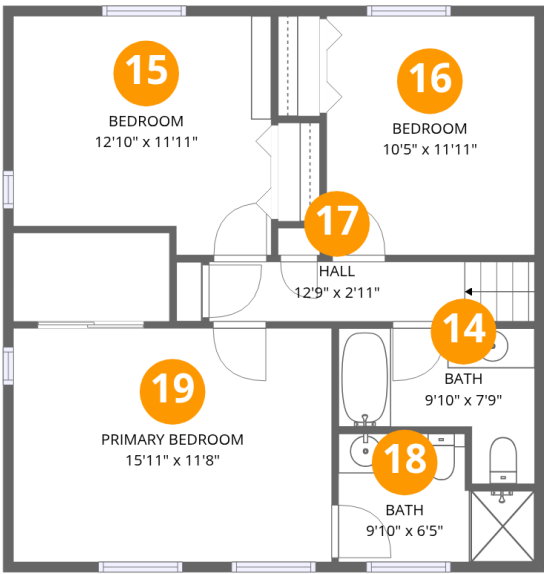


Room dimensions

Floor 3 Total:662sqft Excluded: 6sqft

#		Dimensions	sqft	Counted as living area
10	Foyer	6'2" x 13'4"	82 sq. ft	Yes
11	Living Room	19'6" x 13'4"	260 sq. ft	Yes
12	Dining Area	9'6" x 12'5"	118 sq. ft	Yes
13	Kitchen	15'10" x 13'9"	218 sq. ft	Yes

12558 West Maryland Drive, Green Mountain, Lakewood,
Jefferson County, Colorado, United States, 80228



Room dimensions

Floor 4 Total:710sqft Excluded: 0sqft

#		Dimensions	sqft	Counted as living area
14	Bath	9'10" x 7'9"	76 sq. ft	Yes
15	Bedroom	12'10" x 11'11"	153 sq. ft	Yes
16	Bedroom	10'5" x 11'11"	124 sq. ft	Yes
17	Hall	12'9" x 2'11"	38 sq. ft	Yes
18	Bath	9'10" x 6'5"	63 sq. ft	Yes
19	Primary Bedroom	15'11" x 11'8"	185 sq. ft	Yes

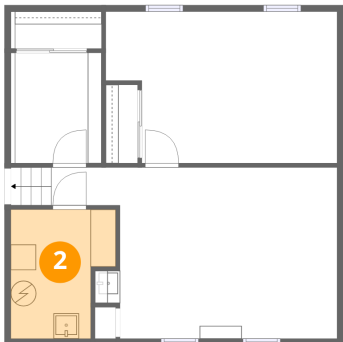
1 Floor 1 - Room



Dimensions: 6'10" x 8'8"
Area: 59 sq. ft
Counted as living area: No

Heated: Yes
Finished: No
Enclosed: Yes
Contiguous: Yes
Permitted: Yes
Wet space: No
Addition: No
Conversion: No

2 Floor 1 - Utility



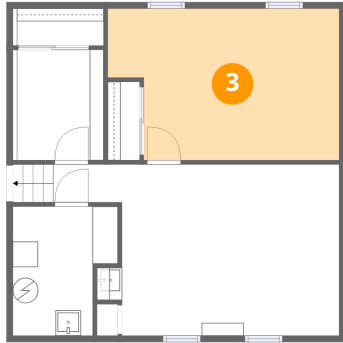
Dimensions: 8'3" x 10'2"
Area: 84 sq. ft
Counted as living area: No

Heated: Yes
Finished: No
Enclosed: Yes
Contiguous: Yes
Permitted: Yes
Wet space: No
Addition: No
Conversion: No

Home data report

12558 West Maryland Drive, Green Mountain, Lakewood,
Jefferson County, Colorado, United States, 80228

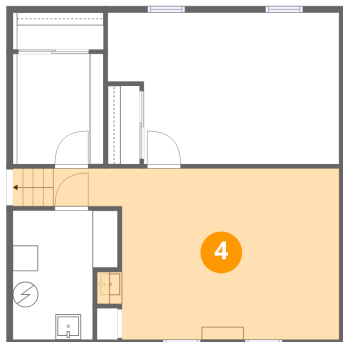
3 Floor 1 - Room



Dimensions: 18'2" x 11'11"
Area: 217 sq. ft
Counted as living area: No

Heated: Yes
Finished: No
Enclosed: Yes
Contiguous: Yes
Permitted: Yes
Wet space: No
Addition: No
Conversion: No

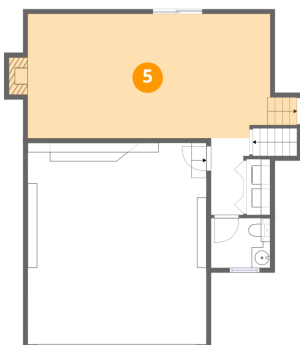
4 Floor 1 - Basement



Dimensions: 22'6" x 13'5"
Area: 302 sq. ft
Counted as living area: No

Heated: Yes
Finished: No
Enclosed: Yes
Contiguous: Yes
Permitted: Yes
Wet space: No
Addition: No
Conversion: No

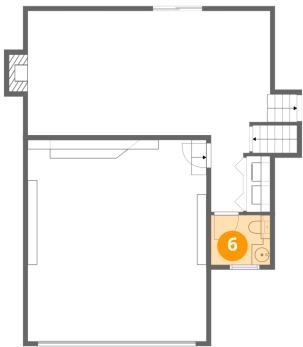
5 Floor 2 - Family Room



Dimensions: 26'0" x 13'4"
Area: 347 sq. ft
Counted as living area: Yes

Heated: Yes
Finished: Yes
Enclosed: Yes
Contiguous: Yes
Permitted: Yes
Wet space: No
Addition: No
Conversion: No

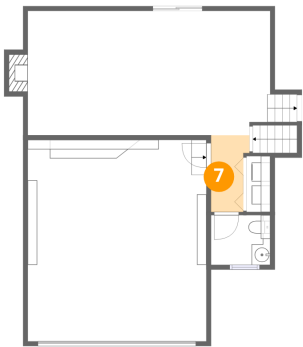
6 Floor 2 - Bath



Dimensions: 6'4" x 5'4"
Area: 34 sq. ft
Counted as living area: Yes

Heated: Yes
Finished: Yes
Enclosed: Yes
Contiguous: Yes
Permitted: Yes
Wet space: Yes
Addition: No
Conversion: No

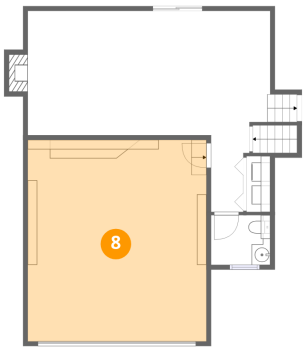
7 Floor 2 - Hall



Dimensions: 4'2" x 8'3"
Area: 34 sq. ft
Counted as living area: Yes

Heated: Yes
Finished: Yes
Enclosed: Yes
Contiguous: Yes
Permitted: Yes
Wet space: No
Addition: No
Conversion: No

8 Floor 2 - Garage

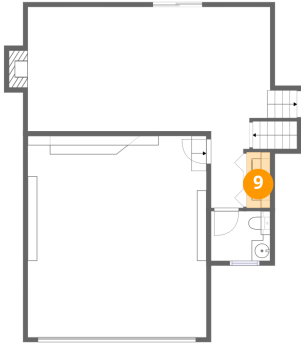


Dimensions: 19'2" x 21'7"
Area: 415 sq. ft
Counted as living area: No

Heated: No
Finished: No
Enclosed: Yes
Contiguous: Yes
Permitted: Yes
Wet space: No
Addition: No
Conversion: No

12558 West Maryland Drive, Green Mountain, Lakewood,
Jefferson County, Colorado, United States, 80228

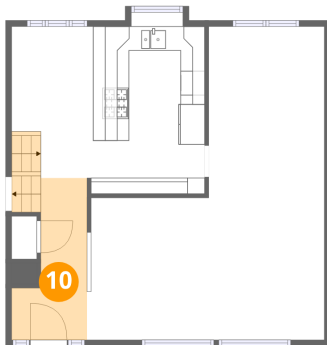
9 Floor 2 - Laundry



Dimensions: 2'6" x 6'0"
Area: 15 sq. ft
Counted as living area: Yes

Heated: Yes
Finished: Yes
Enclosed: Yes
Contiguous: Yes
Permitted: Yes
Wet space: No
Addition: No
Conversion: No

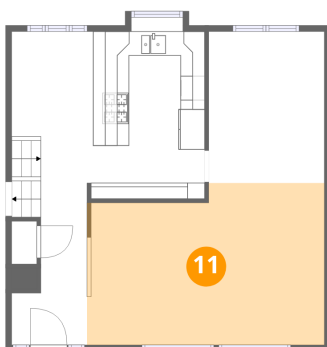
10 Floor 3 - Foyer



Dimensions: 6'2" x 13'4"
Area: 82 sq. ft
Counted as living area: Yes

Heated: Yes
Finished: Yes
Enclosed: Yes
Contiguous: Yes
Permitted: Yes
Wet space: No
Addition: No
Conversion: No

11 Floor 3 - Living Room



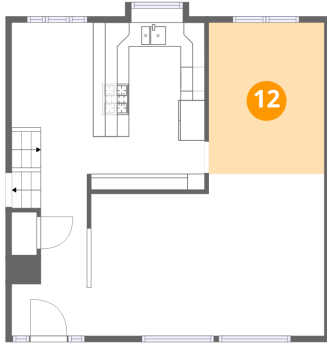
Dimensions: 19'6" x 13'4"
Area: 260 sq. ft
Counted as living area: Yes

Heated: Yes
Finished: Yes
Enclosed: Yes
Contiguous: Yes
Permitted: Yes
Wet space: No
Addition: No
Conversion: No

Home data report

12558 West Maryland Drive, Green Mountain, Lakewood,
Jefferson County, Colorado, United States, 80228

12 Floor 3 - Dining Area



Dimensions: 9'6" x 12'5"
Area: 118 sq. ft
Counted as living area: Yes

Heated: Yes
Finished: Yes
Enclosed: Yes
Contiguous: Yes
Permitted: Yes
Wet space: No
Addition: No
Conversion: No

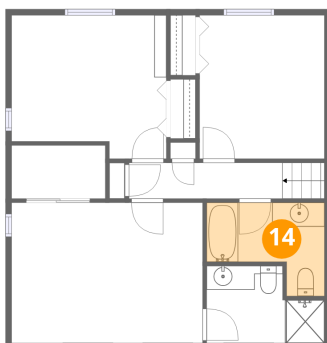
13 Floor 3 - Kitchen



Dimensions: 15'10" x 13'9"
Area: 218 sq. ft
Counted as living area: Yes

Heated: Yes
Finished: Yes
Enclosed: Yes
Contiguous: Yes
Permitted: Yes
Wet space: No
Addition: No
Conversion: No

14 Floor 4 - Bath

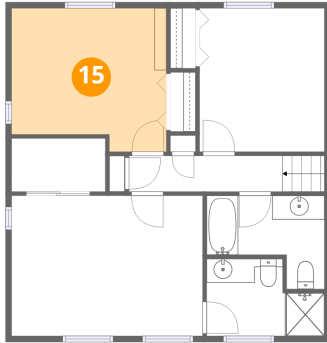


Dimensions: 9'10" x 7'9"
Area: 76 sq. ft
Counted as living area: Yes

Heated: Yes
Finished: Yes
Enclosed: Yes
Contiguous: Yes
Permitted: Yes
Wet space: Yes
Addition: No
Conversion: No

12558 West Maryland Drive, Green Mountain, Lakewood,
Jefferson County, Colorado, United States, 80228

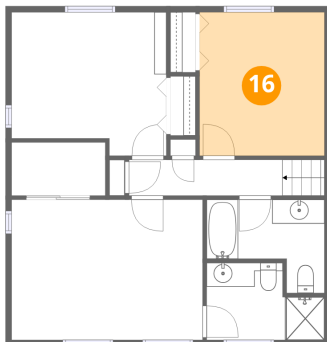
15 Floor 4 - Bedroom



Dimensions: 12'10" x 11'11"
Area: 153 sq. ft
Counted as living area: Yes

Heated: Yes
Finished: Yes
Enclosed: Yes
Contiguous: Yes
Permitted: Yes
Wet space: No
Addition: No
Conversion: No

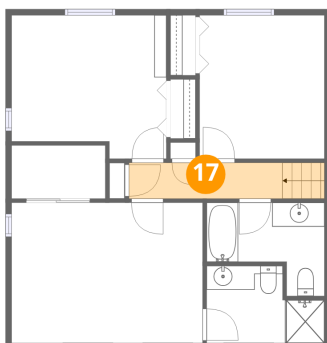
16 Floor 4 - Bedroom



Dimensions: 10'5" x 11'11"
Area: 124 sq. ft
Counted as living area: Yes

Heated: Yes
Finished: Yes
Enclosed: Yes
Contiguous: Yes
Permitted: Yes
Wet space: No
Addition: No
Conversion: No

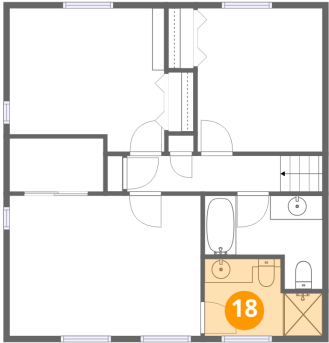
17 Floor 4 - Hall



Dimensions: 12'9" x 2'11"
Area: 38 sq. ft
Counted as living area: Yes

Heated: Yes
Finished: Yes
Enclosed: Yes
Contiguous: Yes
Permitted: Yes
Wet space: No
Addition: No
Conversion: No

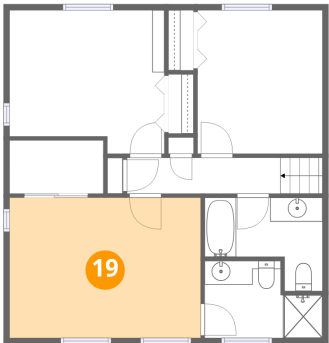
18 Floor 4 - Bath



Dimensions: 9'10" x 6'5"
Area: 63 sq. ft
Counted as living area: Yes

Heated: Yes
Finished: Yes
Enclosed: Yes
Contiguous: Yes
Permitted: Yes
Wet space: Yes
Addition: No
Conversion: No

19 Floor 4 - Primary Bedroom



Dimensions: 15'11" x 11'8"
Area: 185 sq. ft
Counted as living area: Yes

Heated: Yes
Finished: Yes
Enclosed: Yes
Contiguous: Yes
Permitted: Yes
Wet space: No
Addition: No
Conversion: No