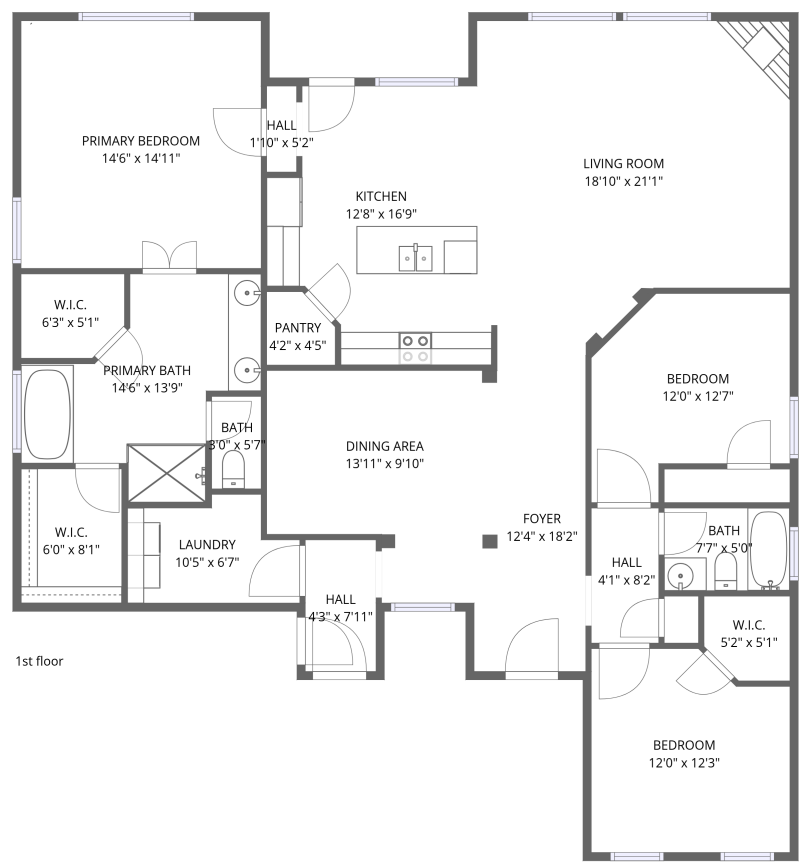


3214 Sea Ray Lane, Sterling Place, Lakeland, Shelby County, Tennessee, United States, 38002




Total Area: 1800 sq. ft


1st Floor: 1800 sq. ft

Excluded: Walls: 106 sq. ft

Property summary

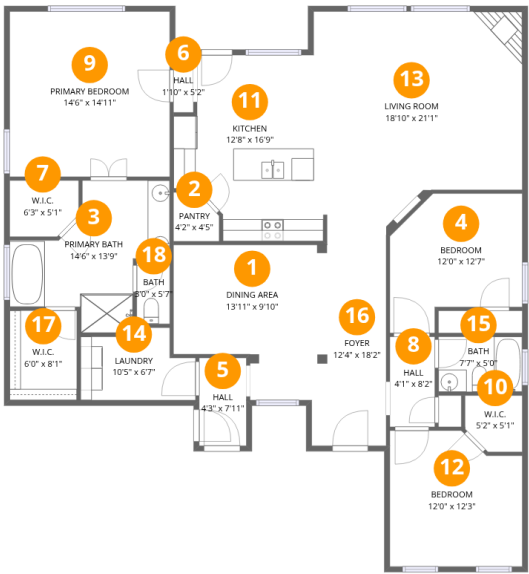
 1 Floors

 3 Bedrooms

 2 Bathrooms

Home data report

3214 Sea Ray Lane, Sterling Place, Lakeland, Shelby County, Tennessee, United States, 38002



Room dimensions

Floor 1 Total:1800sqft   Excluded: 0sqft

#		Dimensions	sqft	Counted as living area
1	Dining Area	13'11" x 9'10"	137 sq. ft	Yes
2	Pantry	4'2" x 4'5"	16 sq. ft	Yes
3	Primary Bath	14'6" x 13'9"	129 sq. ft	Yes
4	Bedroom	12'0" x 12'7"	125 sq. ft	Yes
5	Hall	4'3" x 7'11"	34 sq. ft	Yes
6	Hall	1'10" x 5'2"	9 sq. ft	Yes
7	W.I.C.	6'3" x 5'1"	30 sq. ft	Yes
8	Hall	4'1" x 8'2"	33 sq. ft	Yes
9	Primary Bedroom	14'6" x 14'11"	216 sq. ft	Yes
10	W.I.C.	5'2" x 5'1"	24 sq. ft	Yes
11	Kitchen	12'8" x 16'9"	185 sq. ft	Yes

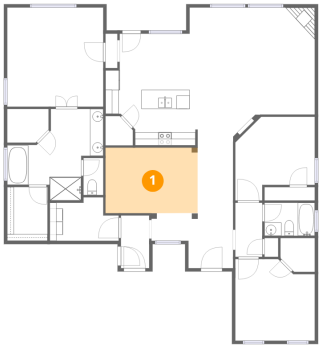
## Home data report

**3214 Sea Ray Lane, Sterling Place, Lakeland, Shelby County,  
Tennessee, United States, 38002**

#		Dimensions	sqft	Counted as living area
12	Bedroom	12'0" x 12'3"	137 sq. ft	Yes
13	Living Room	18'10" x 21'1"	341 sq. ft	Yes
14	Laundry	10'5" x 6'7"	57 sq. ft	Yes
15	Bath	7'7" x 5'0"	38 sq. ft	Yes
16	Foyer	12'4" x 18'2"	132 sq. ft	Yes
17	W.I.C.	6'0" x 8'1"	49 sq. ft	Yes
18	Bath	3'0" x 5'7"	17 sq. ft	Yes

3214 Sea Ray Lane, Sterling Place, Lakeland, Shelby County,  
Tennessee, United States, 38002

1 Floor 1 - Dining Area



Dimensions: 13'11" x 9'10"  
Area: 137 sq. ft  
Counted as living area: Yes

Heated: Yes  
Finished: Yes  
Enclosed: Yes  
Contiguous: Yes  
Permitted: Yes  
Wet space: No  
Addition: No  
Conversion: No

2 Floor 1 - Pantry



Dimensions: 4'2" x 4'5"  
Area: 16 sq. ft  
Counted as living area: Yes

Heated: Yes  
Finished: Yes  
Enclosed: Yes  
Contiguous: Yes  
Permitted: Yes  
Wet space: No  
Addition: No  
Conversion: No

3214 Sea Ray Lane, Sterling Place, Lakeland, Shelby County,  
Tennessee, United States, 38002

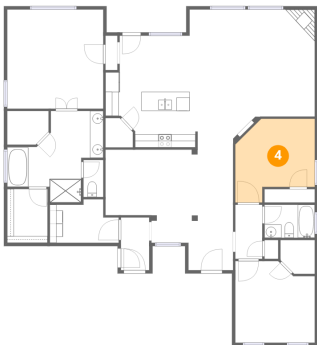
3 Floor 1 - Primary Bath



Dimensions: 14'6" x 13'9"  
Area: 129 sq. ft  
Counted as living area: Yes

Heated: Yes  
Finished: Yes  
Enclosed: Yes  
Contiguous: Yes  
Permitted: Yes  
Wet space: Yes  
Addition: No  
Conversion: No

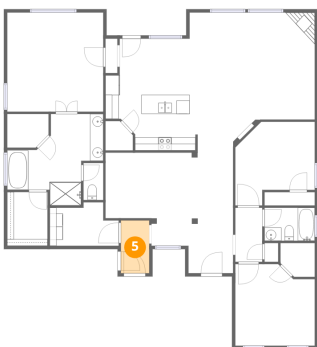
4 Floor 1 - Bedroom



Dimensions: 12'0" x 12'7"  
Area: 125 sq. ft  
Counted as living area: Yes

Heated: Yes  
Finished: Yes  
Enclosed: Yes  
Contiguous: Yes  
Permitted: Yes  
Wet space: No  
Addition: No  
Conversion: No

5 Floor 1 - Hall



Dimensions: 4'3" x 7'11"  
Area: 34 sq. ft  
Counted as living area: Yes

Heated: Yes  
Finished: Yes  
Enclosed: Yes  
Contiguous: Yes  
Permitted: Yes  
Wet space: No  
Addition: No  
Conversion: No

3214 Sea Ray Lane, Sterling Place, Lakeland, Shelby County,  
Tennessee, United States, 38002

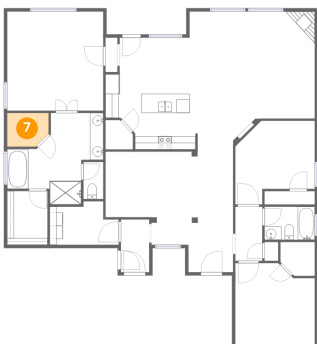
6 Floor 1 - Hall



Dimensions: 1'10" x 5'2"  
Area: 9 sq. ft  
Counted as living area: Yes

Heated: Yes  
Finished: Yes  
Enclosed: Yes  
Contiguous: Yes  
Permitted: Yes  
Wet space: No  
Addition: No  
Conversion: No

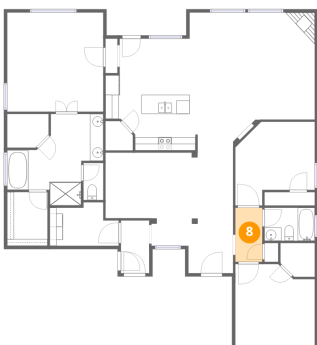
7 Floor 1 - W.I.C.



Dimensions: 6'3" x 5'1"  
Area: 30 sq. ft  
Counted as living area: Yes

Heated: Yes  
Finished: Yes  
Enclosed: Yes  
Contiguous: Yes  
Permitted: Yes  
Wet space: No  
Addition: No  
Conversion: No

8 Floor 1 - Hall



Dimensions: 4'1" x 8'2"  
Area: 33 sq. ft  
Counted as living area: Yes

Heated: Yes  
Finished: Yes  
Enclosed: Yes  
Contiguous: Yes  
Permitted: Yes  
Wet space: No  
Addition: No  
Conversion: No

3214 Sea Ray Lane, Sterling Place, Lakeland, Shelby County,  
Tennessee, United States, 38002

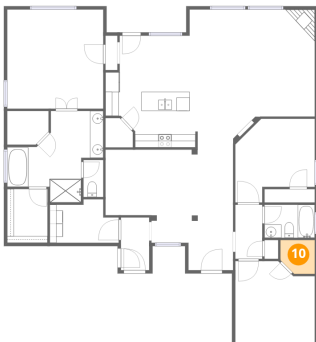
## 9 Floor 1 - Primary Bedroom



Dimensions: 14'6" x 14'11"  
Area: 216 sq. ft  
Counted as living area: Yes

Heated: Yes  
Finished: Yes  
Enclosed: Yes  
Contiguous: Yes  
Permitted: Yes  
Wet space: No  
Addition: No  
Conversion: No

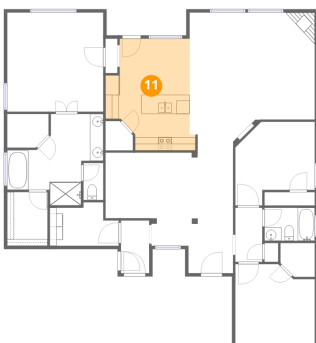
## 10 Floor 1 - W.I.C.



Dimensions: 5'2" x 5'1"  
Area: 24 sq. ft  
Counted as living area: Yes

Heated: Yes  
Finished: Yes  
Enclosed: Yes  
Contiguous: Yes  
Permitted: Yes  
Wet space: No  
Addition: No  
Conversion: No

## 11 Floor 1 - Kitchen

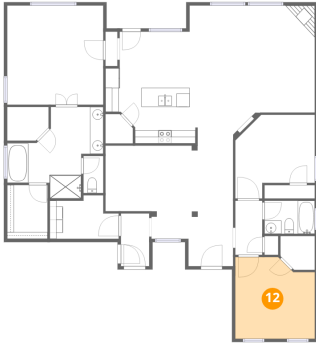


Dimensions: 12'8" x 16'9"  
Area: 185 sq. ft  
Counted as living area: Yes

Heated: Yes  
Finished: Yes  
Enclosed: Yes  
Contiguous: Yes  
Permitted: Yes  
Wet space: No  
Addition: No  
Conversion: No

3214 Sea Ray Lane, Sterling Place, Lakeland, Shelby County,  
Tennessee, United States, 38002

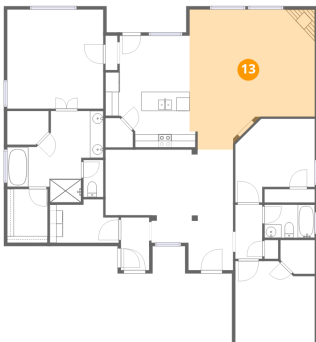
## 12 Floor 1 - Bedroom



Dimensions: 12'0" x 12'3"  
Area: 137 sq. ft  
Counted as living area: Yes

Heated: Yes  
Finished: Yes  
Enclosed: Yes  
Contiguous: Yes  
Permitted: Yes  
Wet space: No  
Addition: No  
Conversion: No

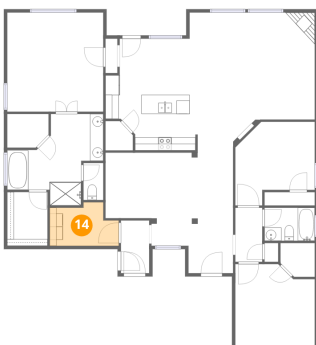
## 13 Floor 1 - Living Room



Dimensions: 18'10" x 21'1"  
Area: 341 sq. ft  
Counted as living area: Yes

Heated: Yes  
Finished: Yes  
Enclosed: Yes  
Contiguous: Yes  
Permitted: Yes  
Wet space: No  
Addition: No  
Conversion: No

## 14 Floor 1 - Laundry



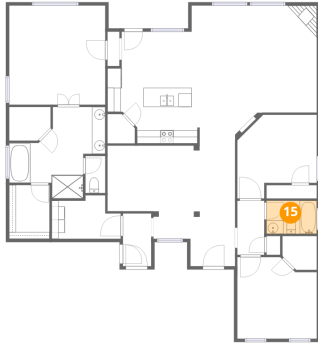
Dimensions: 10'5" x 6'7"  
Area: 57 sq. ft  
Counted as living area: Yes

Heated: Yes  
Finished: Yes  
Enclosed: Yes  
Contiguous: Yes  
Permitted: Yes  
Wet space: No  
Addition: No  
Conversion: No



3214 Sea Ray Lane, Sterling Place, Lakeland, Shelby County,  
Tennessee, United States, 38002

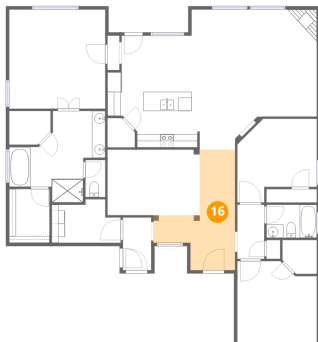
### 15 Floor 1 - Bath



Dimensions: 7'7" x 5'0"  
Area: 38 sq. ft  
Counted as living area: Yes

Heated: Yes  
Finished: Yes  
Enclosed: Yes  
Contiguous: Yes  
Permitted: Yes  
Wet space: Yes  
Addition: No  
Conversion: No

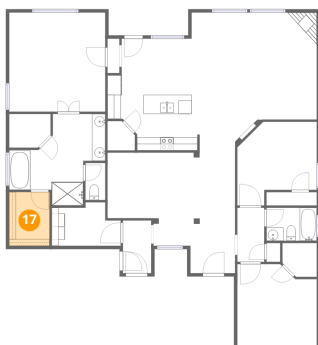
### 16 Floor 1 - Foyer



Dimensions: 12'4" x 18'2"  
Area: 132 sq. ft  
Counted as living area: Yes

Heated: Yes  
Finished: Yes  
Enclosed: Yes  
Contiguous: Yes  
Permitted: Yes  
Wet space: No  
Addition: No  
Conversion: No

### 17 Floor 1 - W.I.C.



Dimensions: 6'0" x 8'1"  
Area: 49 sq. ft  
Counted as living area: Yes

Heated: Yes  
Finished: Yes  
Enclosed: Yes  
Contiguous: Yes  
Permitted: Yes  
Wet space: No  
Addition: No  
Conversion: No

3214 Sea Ray Lane, Sterling Place, Lakeland, Shelby County,  
Tennessee, United States, 38002

**18** Floor 1 - Bath



Dimensions: 3'0" x 5'7"  
Area: 17 sq. ft  
Counted as living area: Yes

Heated: Yes  
Finished: Yes  
Enclosed: Yes  
Contiguous: Yes  
Permitted: Yes  
Wet space: Yes  
Addition: No  
Conversion: No