

# Home data report

## 835 Chalmers Pl, Pittsburgh, PA, US



**Total Area: 2431 sq. ft**

Basement: 587 sq. ft, 1st Floor: 991 sq. ft, 2nd Floor: 853 sq. ft

Excluded: Undefined 20 sq. ft, Garage 291 sq. ft, Utility 184 sq. ft, Porch 52 sq. ft, Patio 399 sq. ft, Fireplace 14 sq. ft, Walls: 210 sq. ft

### Property summary

 **3** Floors

 **3** Bedrooms

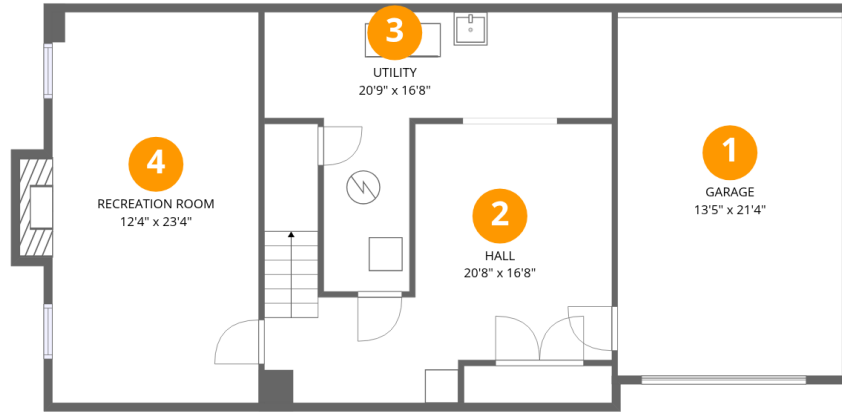
 **2** Bathrooms

Home data report

# 835 Chalmers Pl, Pittsburgh, PA, US

 **1**  
Half baths

 **1**  
Garages



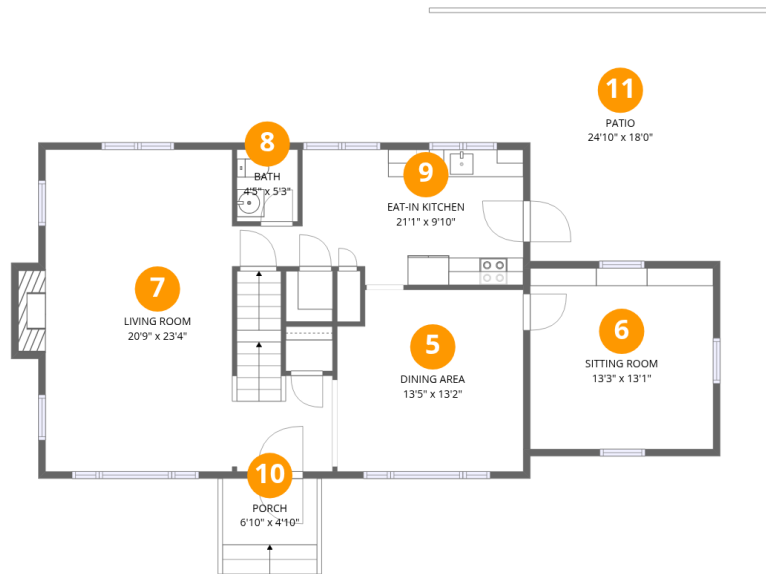
## Room dimensions

Floor 1 Below grade

Total: 587 sqft

Excluded: 495 sqft

#		Dimensions	sqft	Counted as living area
1	Garage	13'5" x 21'4"	291 sq. ft	No
2	Hall	20'8" x 16'8"	262 sq. ft	Yes
3	Utility	20'9" x 16'8"	184 sq. ft	No
4	Recreation Room	12'4" x 23'4"	299 sq. ft	Yes



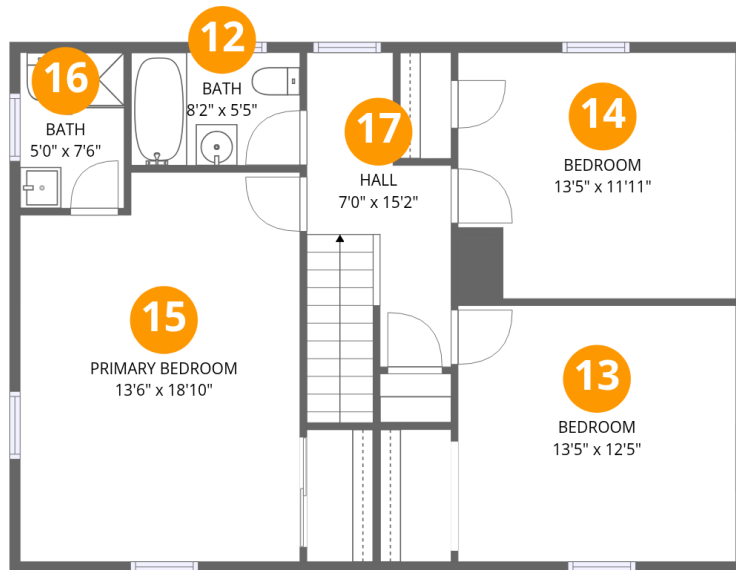
## Room dimensions

Floor 2

Total: 991 sqft

Excluded: 465 sqft

#		Dimensions	sqft	Counted as living area
5	Dining Area	13'5" x 13'2"	172 sq. ft	Yes
6	Sitting Room	13'3" x 13'1"	174 sq. ft	Yes
7	Living Room	20'9" x 23'4"	402 sq. ft	Yes
8	Bath	4'5" x 5'3"	23 sq. ft	Yes
9	Eat-in Kitchen	21'1" x 9'10"	166 sq. ft	Yes
10	Porch	6'10" x 4'10"	52 sq. ft	No
11	Patio	24'10" x 18'0"	399 sq. ft	No



## Room dimensions

Floor 3

Total: 853 sqft

Excluded: 0 sqft

#		Dimensions	sqft	Counted as living area
12	Bath	8'2" x 5'5"	45 sq. ft	Yes
13	Bedroom	13'5" x 12'5"	167 sq. ft	Yes
14	Bedroom	13'5" x 11'11"	152 sq. ft	Yes
15	Primary Bedroom	13'6" x 18'10"	244 sq. ft	Yes
16	Bath	5'0" x 7'6"	37 sq. ft	Yes
17	Hall	7'0" x 15'2"	98 sq. ft	Yes

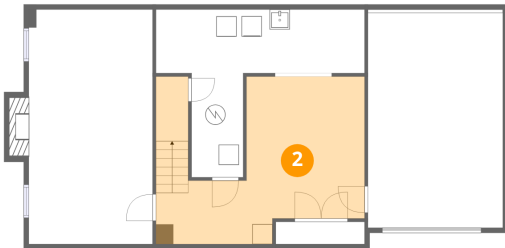
## 1 Floor 1 - Garage



Dimensions: 13'5" x 21'4"  
Area: 291 sq. ft  
Counted as living area: No

Heated: No  
Finished: No  
Enclosed: Yes  
Contiguous: Yes  
Permitted: Yes  
Wet space: No  
Addition: No  
Conversion: No

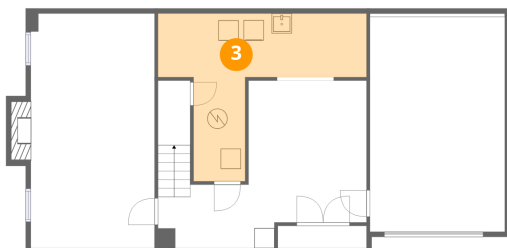
## 2 Floor 1 - Hall



Dimensions: 20'8" x 16'8"  
Area: 262 sq. ft  
Counted as living area: Yes

Heated: Yes  
Finished: Yes  
Enclosed: Yes  
Contiguous: Yes  
Permitted: Yes  
Wet space: No  
Addition: No  
Conversion: No

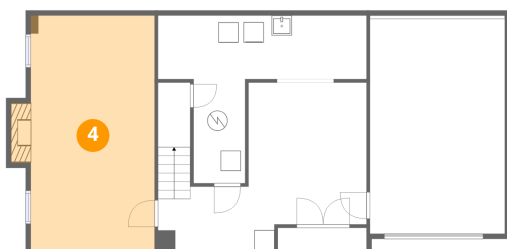
### 3 Floor 1 - Utility



Dimensions: 20'9" x 16'8"  
Area: 184 sq. ft  
Counted as living area: No

Heated: Yes  
Finished: No  
Enclosed: Yes  
Contiguous: Yes  
Permitted: Yes  
Wet space: No  
Addition: No  
Conversion: No

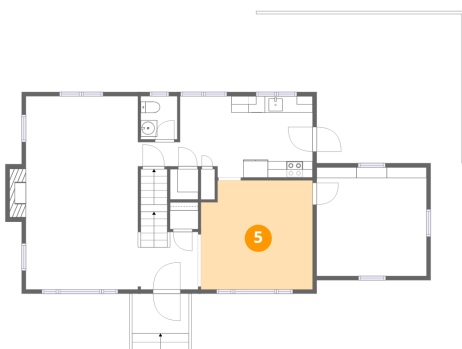
### 4 Floor 1 - Recreation Room



Dimensions: 12'4" x 23'4"  
Area: 299 sq. ft  
Counted as living area: Yes

Heated: Yes  
Finished: Yes  
Enclosed: Yes  
Contiguous: Yes  
Permitted: Yes  
Wet space: No  
Addition: No  
Conversion: No

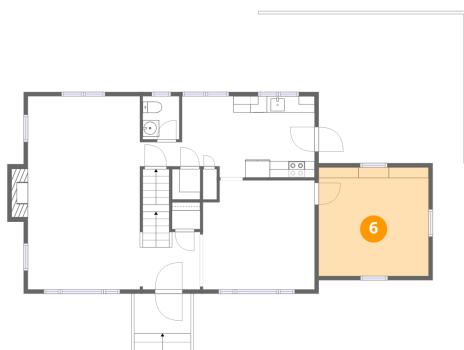
### 5 Floor 2 - Dining Area



Dimensions: 13'5" x 13'2"  
Area: 172 sq. ft  
Counted as living area: Yes

Heated: Yes  
Finished: Yes  
Enclosed: Yes  
Contiguous: Yes  
Permitted: Yes  
Wet space: No  
Addition: No  
Conversion: No

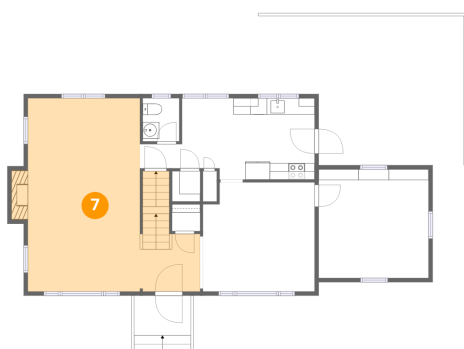
### 6 Floor 2 - Sitting Room



Dimensions: 13'3" x 13'1"  
Area: 174 sq. ft  
Counted as living area: Yes

Heated: Yes  
Finished: Yes  
Enclosed: Yes  
Contiguous: Yes  
Permitted: Yes  
Wet space: No  
Addition: No  
Conversion: No

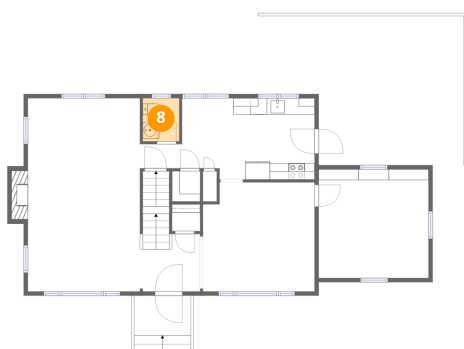
### 7 Floor 2 - Living Room



Dimensions: 20'9" x 23'4"  
Area: 402 sq. ft  
Counted as living area: Yes

Heated: Yes  
Finished: Yes  
Enclosed: Yes  
Contiguous: Yes  
Permitted: Yes  
Wet space: No  
Addition: No  
Conversion: No

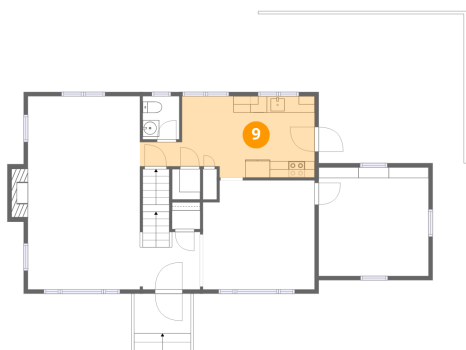
### 8 Floor 2 - Bath



Dimensions: 4'5" x 5'3"  
Area: 23 sq. ft  
Counted as living area: Yes

Heated: Yes  
Finished: Yes  
Enclosed: Yes  
Contiguous: Yes  
Permitted: Yes  
Wet space: Yes  
Addition: No  
Conversion: No

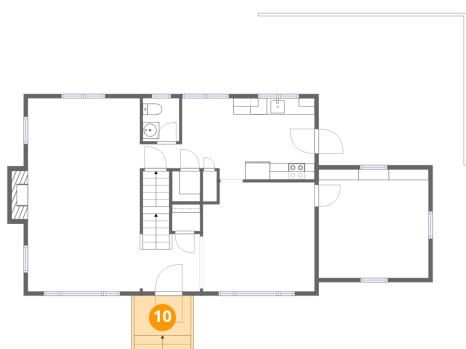
### 9 Floor 2 - Eat-in Kitchen



Dimensions: 21'1" x 9'10"  
Area: 166 sq. ft  
Counted as living area: Yes

Heated: Yes  
Finished: Yes  
Enclosed: Yes  
Contiguous: Yes  
Permitted: Yes  
Wet space: No  
Addition: No  
Conversion: No

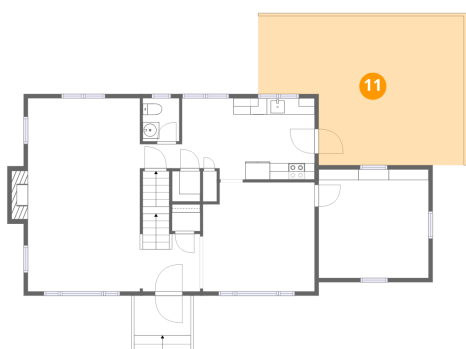
### 10 Floor 2 - Porch



Dimensions: 6'10" x 4'10"  
Area: 52 sq. ft  
Counted as living area: No

Heated: No  
Finished: No  
Enclosed: No  
Contiguous: Yes  
Permitted: Yes  
Wet space: No  
Addition: No  
Conversion: No

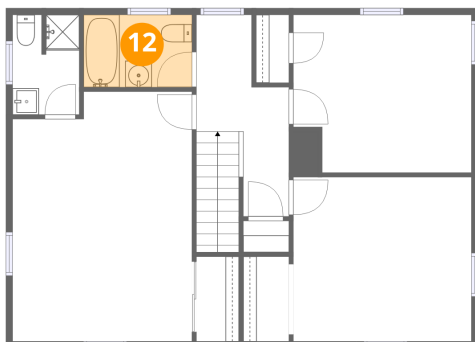
### 11 Floor 2 - Patio



Dimensions: 24'10" x 18'0"  
Area: 399 sq. ft  
Counted as living area: No

Heated: No  
Finished: No  
Enclosed: No  
Contiguous: Yes  
Permitted: Yes  
Wet space: No  
Addition: No  
Conversion: No

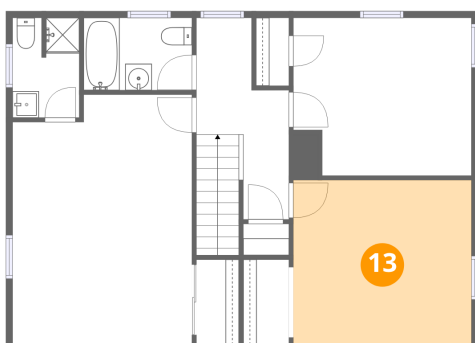
**12** Floor 3 - Bath



Dimensions: 8'2" x 5'5"  
Area: 45 sq. ft  
Counted as living area: Yes

Heated: Yes  
Finished: Yes  
Enclosed: Yes  
Contiguous: Yes  
Permitted: Yes  
Wet space: Yes  
Addition: No  
Conversion: No

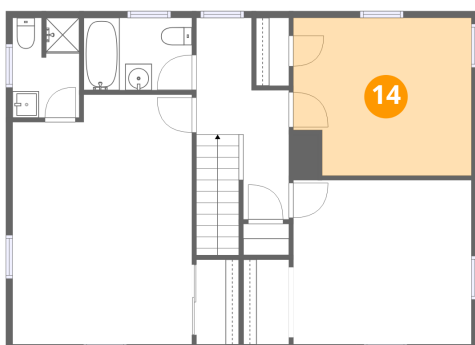
**13** Floor 3 - Bedroom



Dimensions: 13'5" x 12'5"  
Area: 167 sq. ft  
Counted as living area: Yes

Heated: Yes  
Finished: Yes  
Enclosed: Yes  
Contiguous: Yes  
Permitted: Yes  
Wet space: No  
Addition: No  
Conversion: No

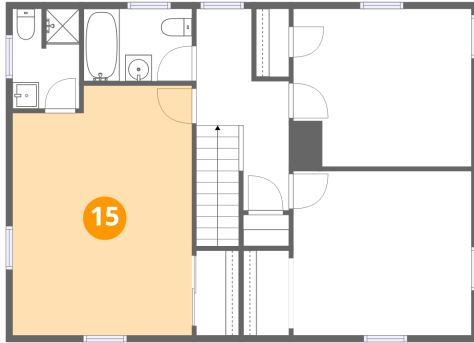
**14** Floor 3 - Bedroom



Dimensions: 13'5" x 11'11"  
Area: 152 sq. ft  
Counted as living area: Yes

Heated: Yes  
Finished: Yes  
Enclosed: Yes  
Contiguous: Yes  
Permitted: Yes  
Wet space: No  
Addition: No  
Conversion: No

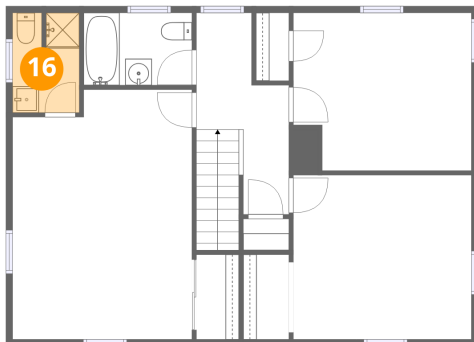
**15** Floor 3 - Primary Bedroom



Dimensions: 13'6" x 18'10"  
Area: 244 sq. ft  
Counted as living area: Yes

Heated: Yes  
Finished: Yes  
Enclosed: Yes  
Contiguous: Yes  
Permitted: Yes  
Wet space: No  
Addition: No  
Conversion: No

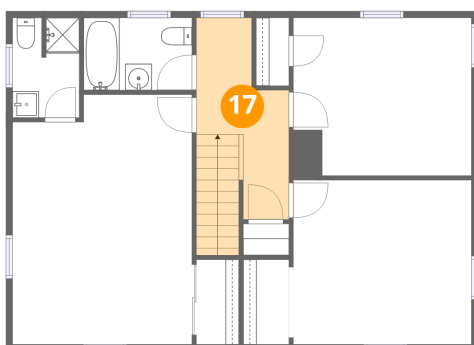
**16** Floor 3 - Bath



Dimensions: 5'0" x 7'6"  
Area: 37 sq. ft  
Counted as living area: Yes

Heated: Yes  
Finished: Yes  
Enclosed: Yes  
Contiguous: Yes  
Permitted: Yes  
Wet space: Yes  
Addition: No  
Conversion: No

**17** Floor 3 - Hall



Dimensions: 7'0" x 15'2"  
Area: 98 sq. ft  
Counted as living area: Yes

Heated: Yes  
Finished: Yes  
Enclosed: Yes  
Contiguous: Yes  
Permitted: Yes  
Wet space: No  
Addition: No  
Conversion: No